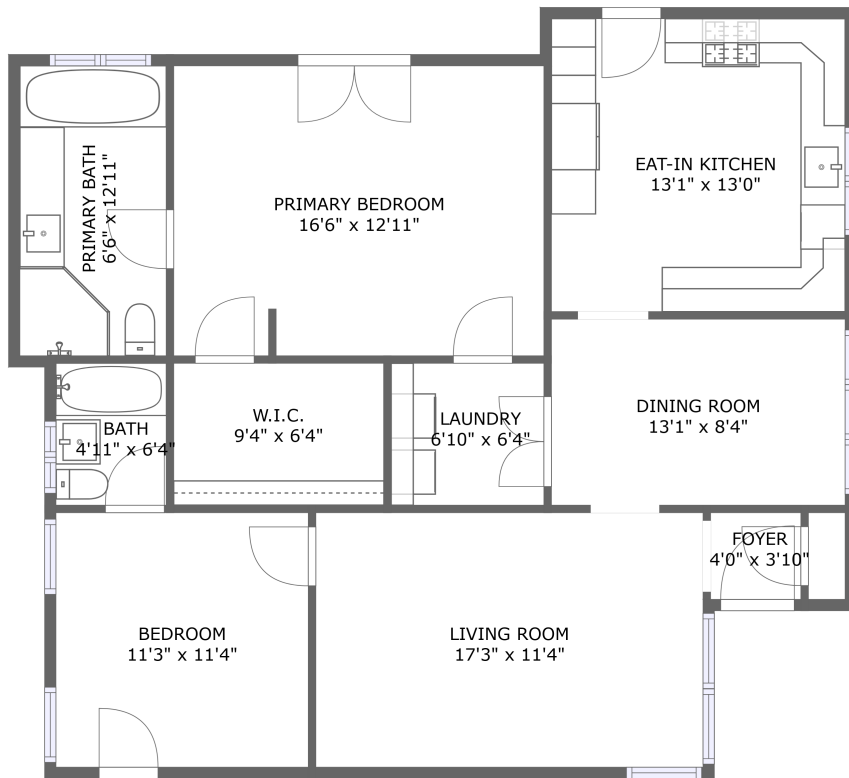



4170 Ince Boulevard, Lucerne, Culver City, Los Angeles County, California, United States, 90232



FLOOR 1

Property summary

 **0** Garages

 **2** Bedrooms

 **2** Bathrooms

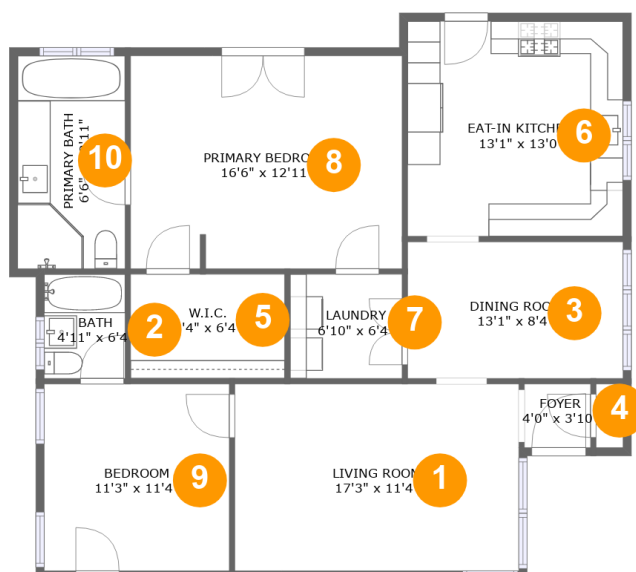
 **0** Half baths

 **1** Floors

 **1,172** Gross living area sqft

 **1,172** Total sqft

4170 Ince Boulevard, Lucerne, Culver City, Los Angeles County, California, United States, 90232



Room dimensions

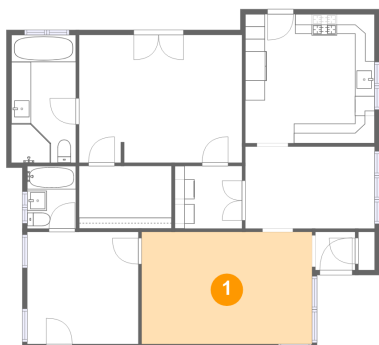
Floor 1

Total sqft: 1172 Living area: 1172

#		Dimensions	sqft	Counted as living area
1	Living Room	17'3" x 11'4"	196 sq. ft	Yes
2	Bath	4'11" x 6'4"	31 sq. ft	Yes
3	Dining Room	13'1" x 8'4"	109 sq. ft	Yes
4	Entry	4'0" x 3'10"	16 sq. ft	Yes
5	Cl	9'4" x 6'4"	59 sq. ft	Yes
6	Kitchen	13'1" x 13'0"	171 sq. ft	Yes
7	Utility	6'10" x 6'4"	43 sq. ft	Yes
8	Bedroom	16'6" x 12'11"	213 sq. ft	Yes
9	Bedroom	11'3" x 11'4"	128 sq. ft	Yes
10	Bath	6'6" x 12'11"	84 sq. ft	Yes

4170 Ince Boulevard, Lucerne, Culver City, Los Angeles County, California, United States, 90232

1 Floor 1 - Living Room



Dimensions: 17'3" x 11'4"
Area: 196 sq. ft
Counted as living area: Yes

Heated: Yes
Finished: Yes
Enclosed: Yes
Contiguous: Yes
Permitted: Yes
Wet space: No
Addition: No
Conversion: No

2 Floor 1 - Bath

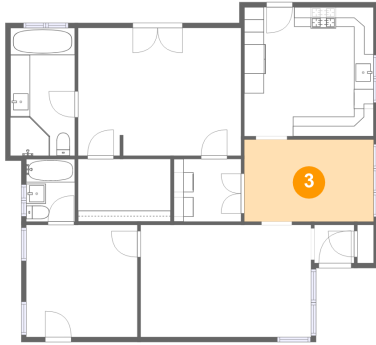


Dimensions: 4'11" x 6'4"
Area: 31 sq. ft
Counted as living area: Yes

Heated: Yes
Finished: Yes
Enclosed: Yes
Contiguous: Yes
Permitted: Yes
Wet space: Yes
Addition: No
Conversion: No

4170 Ince Boulevard, Lucerne, Culver City, Los Angeles County, California, United States, 90232

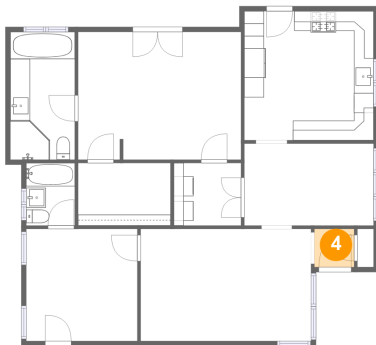
3 Floor 1 - Dining Room



Dimensions: 13'1" x 8'4"
Area: 109 sq. ft
Counted as living area: Yes

Heated: Yes
Finished: Yes
Enclosed: Yes
Contiguous: Yes
Permitted: Yes
Wet space: No
Addition: No
Conversion: No

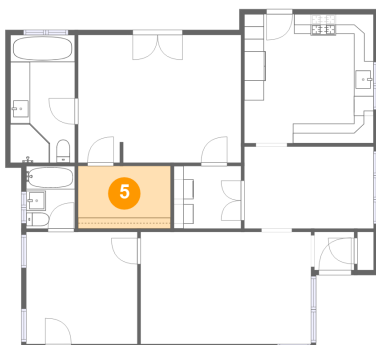
4 Floor 1 - Entry



Dimensions: 4'0" x 3'10"
Area: 16 sq. ft
Counted as living area: Yes

Heated: Yes
Finished: Yes
Enclosed: Yes
Contiguous: Yes
Permitted: Yes
Wet space: No
Addition: No
Conversion: No

5 Floor 1 - Cl

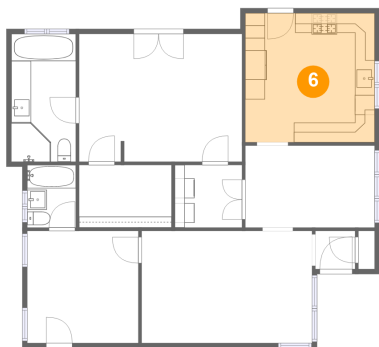


Dimensions: 9'4" x 6'4"
Area: 59 sq. ft
Counted as living area: Yes

Heated: Yes
Finished: Yes
Enclosed: Yes
Contiguous: Yes
Permitted: Yes
Wet space: No
Addition: No
Conversion: No

4170 Ince Boulevard, Lucerne, Culver City, Los Angeles County, California, United States, 90232

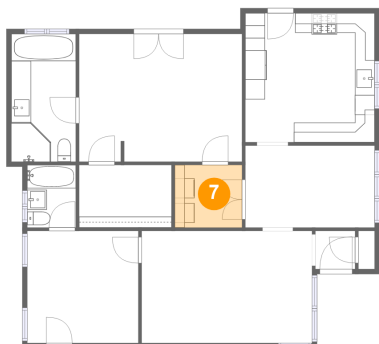
6 Floor 1 - Kitchen



Dimensions: 13'1" x 13'0"
Area: 171 sq. ft
Counted as living area: Yes

Heated: Yes
Finished: Yes
Enclosed: Yes
Contiguous: Yes
Permitted: Yes
Wet space: No
Addition: No
Conversion: No

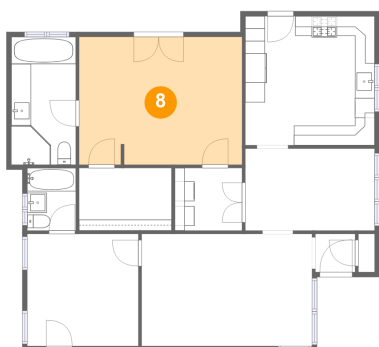
7 Floor 1 - Utility



Dimensions: 6'10" x 6'4"
Area: 43 sq. ft
Counted as living area: Yes

Heated: Yes
Finished: Yes
Enclosed: Yes
Contiguous: Yes
Permitted: Yes
Wet space: No
Addition: No
Conversion: No

8 Floor 1 - Bedroom

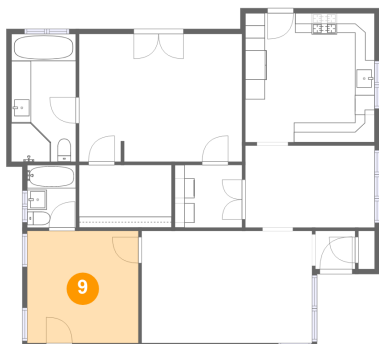


Dimensions: 16'6" x 12'11"
Area: 213 sq. ft
Counted as living area: Yes

Heated: Yes
Finished: Yes
Enclosed: Yes
Contiguous: Yes
Permitted: Yes
Wet space: No
Addition: No
Conversion: No

4170 Ince Boulevard, Lucerne, Culver City, Los Angeles County, California, United States, 90232

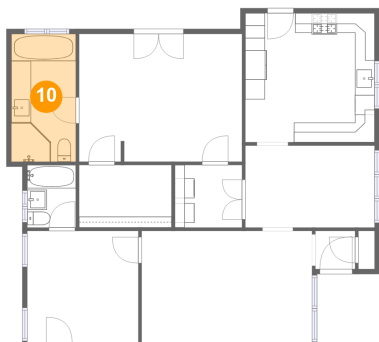
9 Floor 1 - Bedroom



Dimensions: 11'3" x 11'4"
Area: 128 sq. ft
Counted as living area: Yes

Heated: Yes
Finished: Yes
Enclosed: Yes
Contiguous: Yes
Permitted: Yes
Wet space: No
Addition: No
Conversion: No

10 Floor 1 - Bath



Dimensions: 6'6" x 12'11"
Area: 84 sq. ft
Counted as living area: Yes

Heated: Yes
Finished: Yes
Enclosed: Yes
Contiguous: Yes
Permitted: Yes
Wet space: Yes
Addition: No
Conversion: No