

# 76 Landing Road, Litchfield Beach, Pawleys Island, Georgetown County, South Carolina, United States, 29585

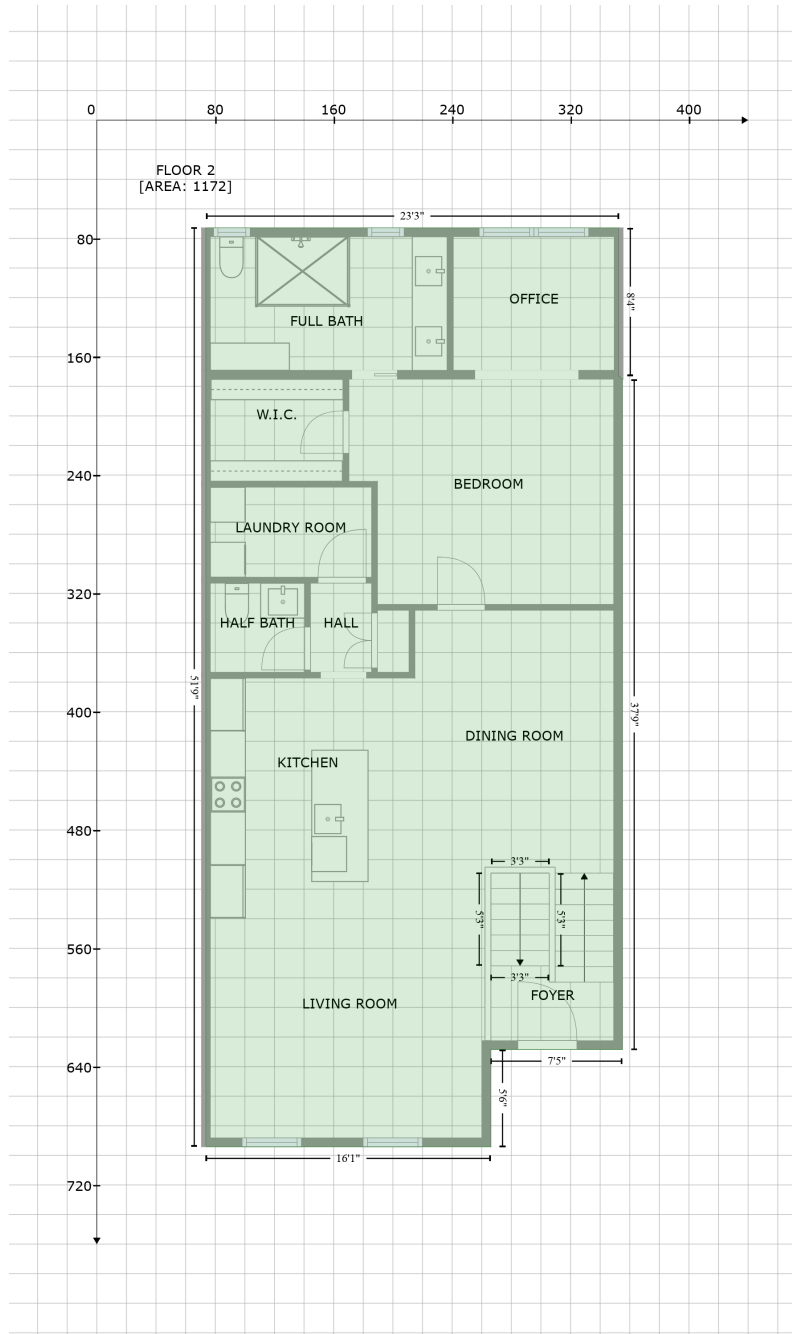
Gross Living Area: 1965 sq. ft



Space	Area (sq. ft)	Calculation <small>Coordinate Polygon Area Algorithm using inches</small>
FLOOR 1 (Living area)	793	$-\left((352.1 + 352.1) * (72.8 - 628.4) + (352.1 + 266.2) * (628.4 - 628.4) + (266.2 + 266.2) * (628.4 - 622.4) + (266.2 + 260.2) * (622.4 - 622.4) + (260.2 + 260.2) * (622.4 - 411.4) + (260.2 + 73.7) * (411.4 - 411.4) + (73.7 + 73.7) * (411.4 - 72.8) + (73.7 + 352.1) * (72.8 - 72.8)\right) * 0.5 * 0.00694$
GARAGE (Non-living area)	370	$-\left((260.2 + 260.2) * (411.4 - 622.4) + (260.2 + 266.2) * (622.4 - 622.4) + (266.2 + 266.2) * (622.4 - 694.6) + (266.2 + 73.7) * (694.6 - 694.6) + (73.7 + 73.7) * (694.6 - 411.4) + (73.7 + 260.2) * (411.4 - 411.4)\right) * 0.5 * 0.00694$

# 76 Landing Road, Litchfield Beach, Pawleys Island, Georgetown County, South Carolina, United States, 29585

Gross Living Area: 1965 sq. ft



Space	Area (sq. ft)	Calculation <small>Coordinate Polygon Area Algorithm using inches</small>
FLOOR 2 (Living area)	1172	$-((352.5 + 352.5) * (72.8 - 172.8) + (352.5 + 355.1) * (172.8 - 175.2) + (355.1 + 355.1) * (175.2 - 628.4) + (355.1 + 266.2) * (628.4 - 628.4) + (266.2 + 266.2) * (628.4 - 694.2) + (266.2 + 73.7) * (694.2 - 694.2) + (73.7 + 73.7) * (694.2 - 72.8) + (73.7 + 352.5) * (72.8 - 72.8)) * 0.5 * 0.00694$