

Home report

3271 Links Manor Drive, Country Club Estates, Salem, Salem city, Virginia, United States, 24153




Property summary

 **1** Garages

 **5** Bedrooms

 **4** Bathrooms

 **1** Half baths

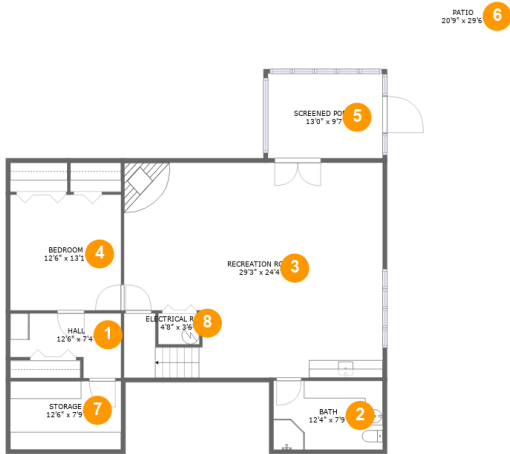
 **3** Floors

 **3,918** Gross living area sqft

 **6,178** Total sqft

Home report

3271 Links Manor Drive, Country Club Estates, Salem, Salem city, Virginia, United States, 24153



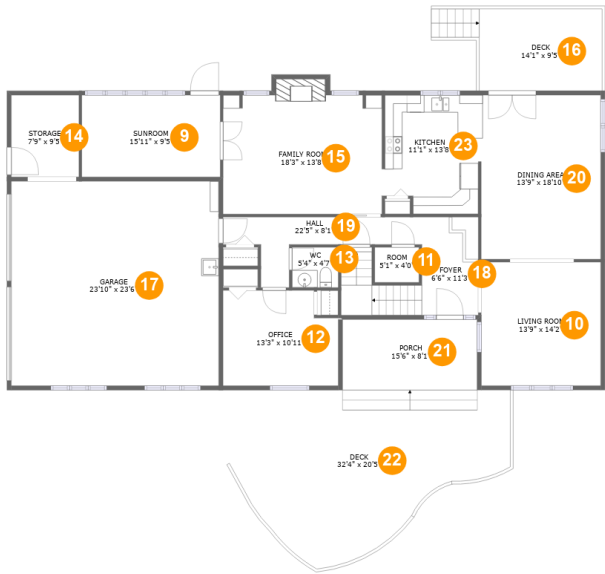
Room dimensions

Floor 1 Total sqft: 1955 Living area: 1181

#		Dimensions	sqft	Counted as living area
1	Hall	12'6" x 7'4"	72 sq. ft	Yes
2	Bath	12'4" x 7'9"	96 sq. ft	Yes
3	Recreation Room	29'3" x 24'4"	687 sq. ft	Yes
4	Bedroom	12'6" x 13'1"	164 sq. ft	Yes
5	Screened Porch	13'0" x 9'7"	124 sq. ft	No
6	Patio	20'9" x 29'6"	507 sq. ft	No
7	Storage	12'6" x 7'9"	97 sq. ft	No
8	Electrical Room	4'8" x 3'6"	16 sq. ft	No

Home report

3271 Links Manor Drive, Country Club Estates, Salem, Salem city, Virginia, United States, 24153



Room dimensions

Floor 2 Total sqft: 3010 Living area: 1570

#		Dimensions	sqft	Counted as living area
9	Sunroom	15'11" x 9'5"	150 sq. ft	Yes
10	Living Room	13'9" x 14'2"	195 sq. ft	Yes
11	Room	5'1" x 4'0"	20 sq. ft	Yes
12	Office	13'3" x 10'11"	136 sq. ft	Yes
13	WC	5'4" x 4'7"	25 sq. ft	Yes
14	Storage	7'9" x 9'5"	73 sq. ft	No
15	Family Room	18'3" x 13'8"	259 sq. ft	Yes
16	Deck	14'1" x 9'5"	151 sq. ft	No
17	Garage	23'10" x 23'6"	560 sq. ft	No
18	Foyer	6'6" x 11'3"	122 sq. ft	Yes
19	Hall	22'5" x 8'1"	87 sq. ft	Yes

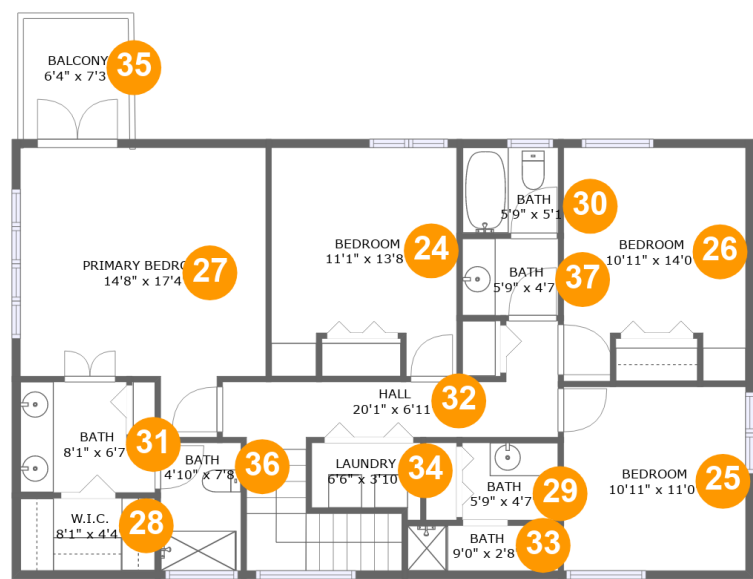
Home report

3271 Links Manor Drive, Country Club Estates, Salem, Salem city, Virginia, United States, 24153

#		Dimensions	sqft	Counted as living area
20	Dining Area	13'9" x 18'10"	259 sq. ft	Yes
21	Porch	15'6" x 8'1"	125 sq. ft	No
22	Deck	32'4" x 20'5"	481 sq. ft	No
23	Kitchen	11'1" x 13'8"	144 sq. ft	Yes

Home report

3271 Links Manor Drive, Country Club Estates, Salem, Salem city, Virginia, United States, 24153



Room dimensions

Floor 3 Total sqft: 1213 Living area: 1167

#		Dimensions	sqft	Counted as living area
24	Bedroom	11'1" x 13'8"	138 sq. ft	Yes
25	Bedroom	10'11" x 11'0"	120 sq. ft	Yes
26	Bedroom	10'11" x 14'0"	136 sq. ft	Yes
27	Primary Bedroom	14'8" x 17'4"	213 sq. ft	Yes
28	W.I.C.	8'1" x 4'4"	35 sq. ft	Yes
29	Bath	5'9" x 4'7"	27 sq. ft	Yes
30	Bath	5'9" x 5'1"	29 sq. ft	Yes
31	Bath	8'1" x 6'7"	47 sq. ft	Yes
32	Hall	20'1" x 6'11"	126 sq. ft	Yes
33	Bath	9'0" x 2'8"	24 sq. ft	Yes
34	Laundry	6'6" x 3'10"	26 sq. ft	Yes

Home report

3271 Links Manor Drive, Country Club Estates, Salem, Salem city, Virginia, United States, 24153

#		Dimensions	sqft	Counted as living area
35	Balcony	6'4" x 7'3"	46 sq. ft	No
36	Bath	4'10" x 7'8"	37 sq. ft	Yes
37	Bath	5'9" x 4'7"	26 sq. ft	Yes

3271 Links Manor Drive, Country Club Estates, Salem, Salem city, Virginia, United States, 24153

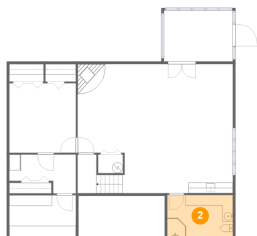
1 Floor 1 - Hall



Dimensions: 12'6" x 7'4"
Area: 72 sq. ft
Counted as living area: Yes

Heated: Yes
Finished: Yes
Enclosed: Yes
Contiguous: Yes
Permitted: Yes
Wet space: No
Addition: No
Conversion: No

2 Floor 1 - Bath



Dimensions: 12'4" x 7'9"
Area: 96 sq. ft
Counted as living area: Yes

Heated: Yes
Finished: Yes
Enclosed: Yes
Contiguous: Yes
Permitted: Yes
Wet space: Yes
Addition: No
Conversion: No

3271 Links Manor Drive, Country Club Estates, Salem, Salem city, Virginia, United States, 24153

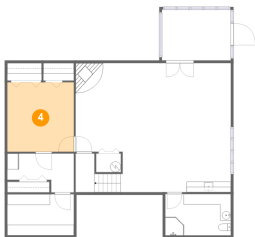
3 Floor 1 - Recreation Room



Dimensions: 29'3" x 24'4"
Area: 687 sq. ft
Counted as living area: Yes

Heated: Yes
Finished: Yes
Enclosed: Yes
Contiguous: Yes
Permitted: Yes
Wet space: No
Addition: No
Conversion: No

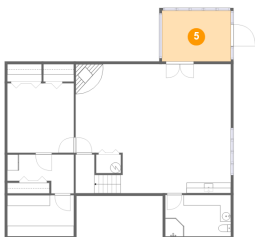
4 Floor 1 - Bedroom



Dimensions: 12'6" x 13'1"
Area: 164 sq. ft
Counted as living area: Yes

Heated: Yes
Finished: Yes
Enclosed: Yes
Contiguous: Yes
Permitted: Yes
Wet space: No
Addition: No
Conversion: No

5 Floor 1 - Screened Porch

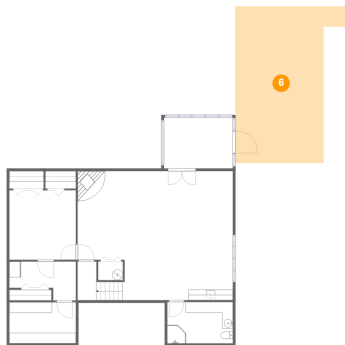


Dimensions: 13'0" x 9'7"
Area: 124 sq. ft
Counted as living area: No

Heated: No
Finished: Yes
Enclosed: No
Contiguous: Yes
Permitted: Yes
Wet space: No
Addition: No
Conversion: No

3271 Links Manor Drive, Country Club Estates, Salem, Salem city, Virginia, United States, 24153

6 Floor 1 - Patio



Dimensions: 20'9" x 29'6"
Area: 507 sq. ft
Counted as living area: No

Heated: No
Finished: Yes
Enclosed: No
Contiguous: Yes
Permitted: Yes
Wet space: No
Addition: No
Conversion: No

7 Floor 1 - Storage



Dimensions: 12'6" x 7'9"
Area: 97 sq. ft
Counted as living area: No

Heated: No
Finished: No
Enclosed: No
Contiguous: Yes
Permitted: Yes
Wet space: No
Addition: No
Conversion: No

8 Floor 1 - Electrical Room

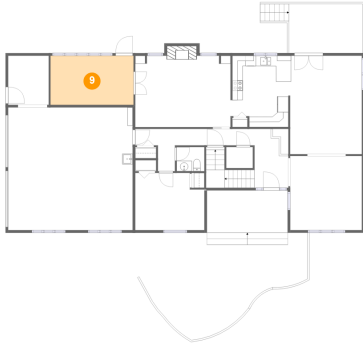


Dimensions: 4'8" x 3'6"
Area: 16 sq. ft
Counted as living area: No

Heated: No
Finished: No
Enclosed: Yes
Contiguous: Yes
Permitted: Yes
Wet space: No
Addition: No
Conversion: No

3271 Links Manor Drive, Country Club Estates, Salem, Salem city, Virginia, United States, 24153

9 Floor 2 - Sunroom



Dimensions: 15'11" x 9'5"
Area: 150 sq. ft
Counted as living area: Yes

Heated: Yes
Finished: Yes
Enclosed: Yes
Contiguous: Yes
Permitted: Yes
Wet space: No
Addition: No
Conversion: No

10 Floor 2 - Living Room



Dimensions: 13'9" x 14'2"
Area: 195 sq. ft
Counted as living area: Yes

Heated: Yes
Finished: Yes
Enclosed: Yes
Contiguous: Yes
Permitted: Yes
Wet space: No
Addition: No
Conversion: No

11 Floor 2 - Room



Dimensions: 5'1" x 4'0"
Area: 20 sq. ft
Counted as living area: Yes

Heated: Yes
Finished: Yes
Enclosed: Yes
Contiguous: Yes
Permitted: Yes
Wet space: No
Addition: No
Conversion: No

3271 Links Manor Drive, Country Club Estates, Salem, Salem city, Virginia, United States, 24153

12 Floor 2 - Office



Dimensions: 13'3" x 10'11"
Area: 136 sq. ft
Counted as living area: Yes

Heated: Yes
Finished: Yes
Enclosed: Yes
Contiguous: Yes
Permitted: Yes
Wet space: No
Addition: No
Conversion: No

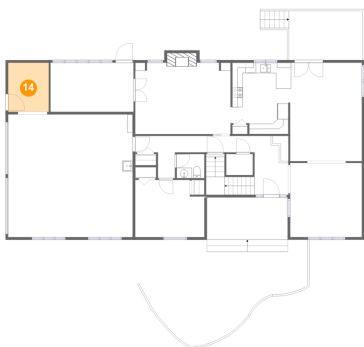
13 Floor 2 - WC



Dimensions: 5'4" x 4'7"
Area: 25 sq. ft
Counted as living area: Yes

Heated: Yes
Finished: Yes
Enclosed: Yes
Contiguous: Yes
Permitted: Yes
Wet space: Yes
Addition: No
Conversion: No

14 Floor 2 - Storage

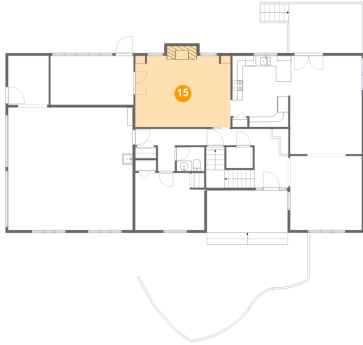


Dimensions: 7'9" x 9'5"
Area: 73 sq. ft
Counted as living area: No

Heated: No
Finished: No
Enclosed: No
Contiguous: Yes
Permitted: Yes
Wet space: No
Addition: No
Conversion: No

3271 Links Manor Drive, Country Club Estates, Salem, Salem city, Virginia, United States, 24153

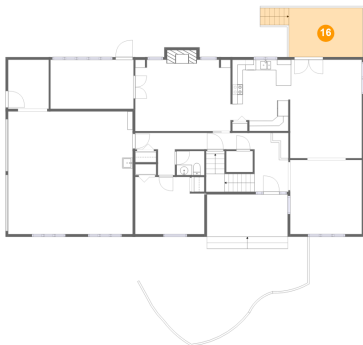
15 Floor 2 - Family Room



Dimensions: 18'3" x 13'8"
Area: 259 sq. ft
Counted as living area: Yes

Heated: Yes
Finished: Yes
Enclosed: Yes
Contiguous: Yes
Permitted: Yes
Wet space: No
Addition: No
Conversion: No

16 Floor 2 - Deck



Dimensions: 14'1" x 9'5"
Area: 151 sq. ft
Counted as living area: No

Heated: No
Finished: Yes
Enclosed: No
Contiguous: Yes
Permitted: Yes
Wet space: No
Addition: No
Conversion: No

17 Floor 2 - Garage



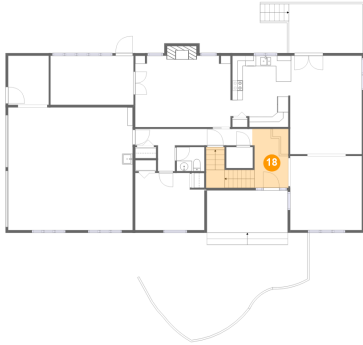
Dimensions: 23'10" x 23'6"
Area: 560 sq. ft
Counted as living area: No

Heated: No
Finished: No
Enclosed: Yes
Contiguous: Yes
Permitted: Yes
Wet space: No
Addition: No
Conversion: No

Home report

3271 Links Manor Drive, Country Club Estates, Salem, Salem city, Virginia, United States, 24153

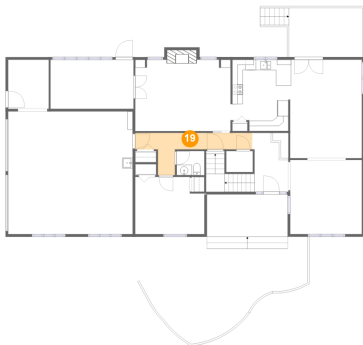
18 Floor 2 - Foyer



Dimensions: 6'6" x 11'3"
Area: 122 sq. ft
Counted as living area: Yes

Heated: Yes
Finished: Yes
Enclosed: Yes
Contiguous: Yes
Permitted: Yes
Wet space: No
Addition: No
Conversion: No

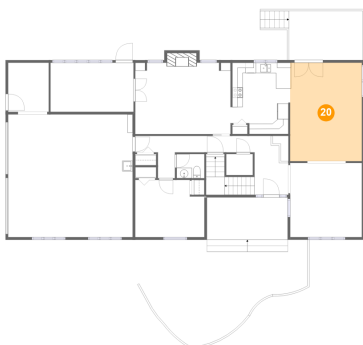
19 Floor 2 - Hall



Dimensions: 22'5" x 8'1"
Area: 87 sq. ft
Counted as living area: Yes

Heated: Yes
Finished: Yes
Enclosed: Yes
Contiguous: Yes
Permitted: Yes
Wet space: No
Addition: No
Conversion: No

20 Floor 2 - Dining Area



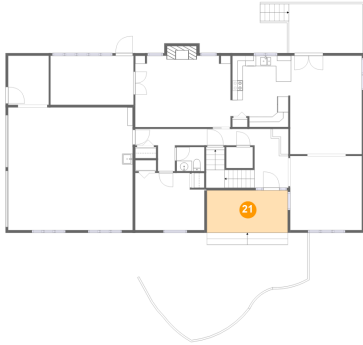
Dimensions: 13'9" x 18'10"
Area: 259 sq. ft
Counted as living area: Yes

Heated: Yes
Finished: Yes
Enclosed: Yes
Contiguous: Yes
Permitted: Yes
Wet space: No
Addition: No
Conversion: No

Home report

3271 Links Manor Drive, Country Club Estates, Salem, Salem city, Virginia, United States, 24153

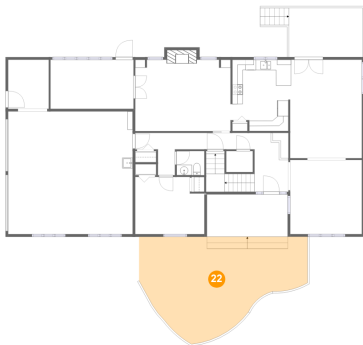
21 Floor 2 - Porch



Dimensions: 15'6" x 8'1"
Area: 125 sq. ft
Counted as living area: No

Heated: No
Finished: Yes
Enclosed: No
Contiguous: Yes
Permitted: Yes
Wet space: No
Addition: No
Conversion: No

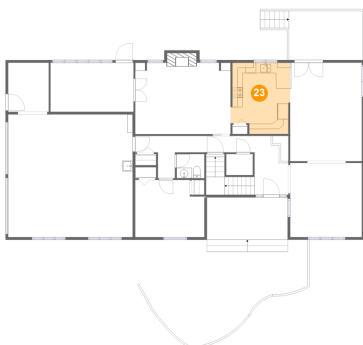
22 Floor 2 - Deck



Dimensions: 32'4" x 20'5"
Area: 481 sq. ft
Counted as living area: No

Heated: No
Finished: Yes
Enclosed: No
Contiguous: Yes
Permitted: Yes
Wet space: No
Addition: No
Conversion: No

23 Floor 2 - Kitchen



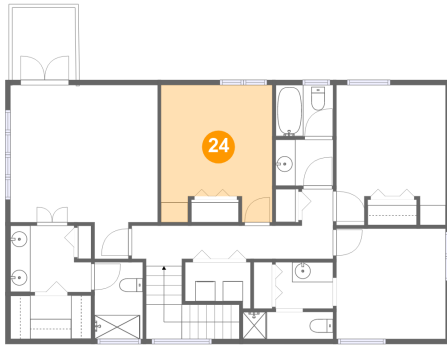
Dimensions: 11'1" x 13'8"
Area: 144 sq. ft
Counted as living area: Yes

Heated: Yes
Finished: Yes
Enclosed: Yes
Contiguous: Yes
Permitted: Yes
Wet space: No
Addition: No
Conversion: No

Home report

3271 Links Manor Drive, Country Club Estates, Salem, Salem city, Virginia, United States, 24153

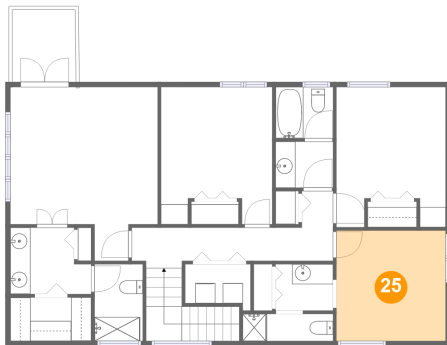
24 Floor 3 - Bedroom



Dimensions: 11'1" x 13'8"
Area: 138 sq. ft
Counted as living area: Yes

Heated: Yes
Finished: Yes
Enclosed: Yes
Contiguous: Yes
Permitted: Yes
Wet space: No
Addition: No
Conversion: No

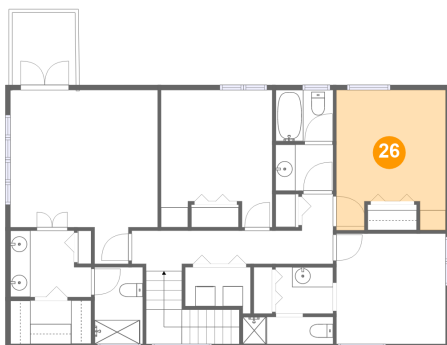
25 Floor 3 - Bedroom



Dimensions: 10'11" x 11'0"
Area: 120 sq. ft
Counted as living area: Yes

Heated: Yes
Finished: Yes
Enclosed: Yes
Contiguous: Yes
Permitted: Yes
Wet space: No
Addition: No
Conversion: No

26 Floor 3 - Bedroom



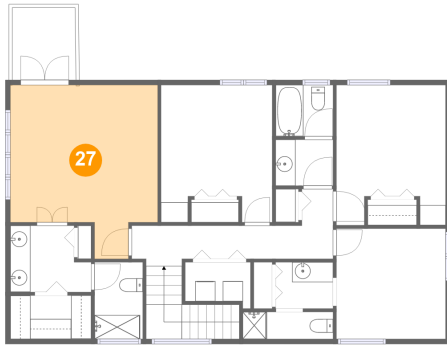
Dimensions: 10'11" x 14'0"
Area: 136 sq. ft
Counted as living area: Yes

Heated: Yes
Finished: Yes
Enclosed: Yes
Contiguous: Yes
Permitted: Yes
Wet space: No
Addition: No
Conversion: No

Home report

3271 Links Manor Drive, Country Club Estates, Salem, Salem city, Virginia, United States, 24153

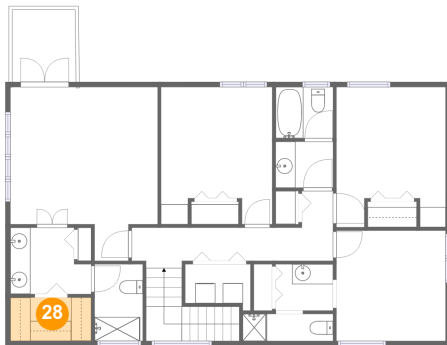
27 Floor 3 - Primary Bedroom



Dimensions: 14'8" x 17'4"
Area: 213 sq. ft
Counted as living area: Yes

Heated: Yes
Finished: Yes
Enclosed: Yes
Contiguous: Yes
Permitted: Yes
Wet space: No
Addition: No
Conversion: No

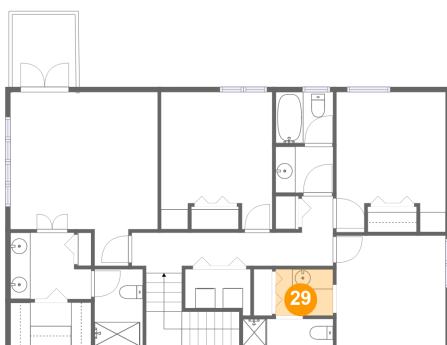
28 Floor 3 - W.I.C.



Dimensions: 8'1" x 4'4"
Area: 35 sq. ft
Counted as living area: Yes

Heated: Yes
Finished: Yes
Enclosed: Yes
Contiguous: Yes
Permitted: Yes
Wet space: No
Addition: No
Conversion: No

29 Floor 3 - Bath



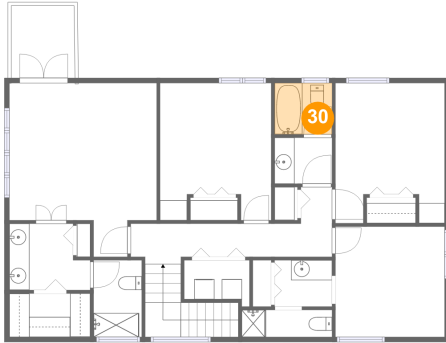
Dimensions: 5'9" x 4'7"
Area: 27 sq. ft
Counted as living area: Yes

Heated: Yes
Finished: Yes
Enclosed: Yes
Contiguous: Yes
Permitted: Yes
Wet space: Yes
Addition: No
Conversion: No

Home report

3271 Links Manor Drive, Country Club Estates, Salem, Salem city, Virginia, United States, 24153

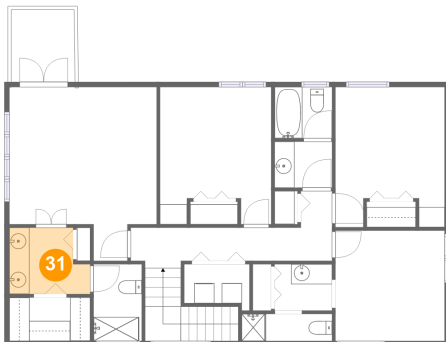
30 Floor 3 - Bath



Dimensions: 5'9" x 5'1"
Area: 29 sq. ft
Counted as living area: Yes

Heated: Yes
Finished: Yes
Enclosed: Yes
Contiguous: Yes
Permitted: Yes
Wet space: Yes
Addition: No
Conversion: No

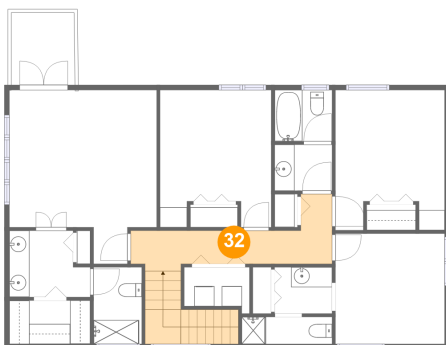
31 Floor 3 - Bath



Dimensions: 8'1" x 6'7"
Area: 47 sq. ft
Counted as living area: Yes

Heated: Yes
Finished: Yes
Enclosed: Yes
Contiguous: Yes
Permitted: Yes
Wet space: Yes
Addition: No
Conversion: No

32 Floor 3 - Hall



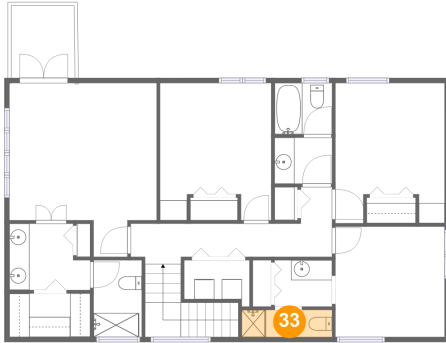
Dimensions: 20'1" x 6'11"
Area: 126 sq. ft
Counted as living area: Yes

Heated: Yes
Finished: Yes
Enclosed: Yes
Contiguous: Yes
Permitted: Yes
Wet space: No
Addition: No
Conversion: No

Home report

3271 Links Manor Drive, Country Club Estates, Salem, Salem city, Virginia, United States, 24153

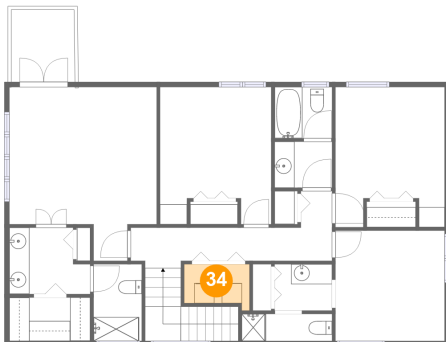
33 Floor 3 - Bath



Dimensions: 9'0" x 2'8"
Area: 24 sq. ft
Counted as living area: Yes

Heated: Yes
Finished: Yes
Enclosed: Yes
Contiguous: Yes
Permitted: Yes
Wet space: Yes
Addition: No
Conversion: No

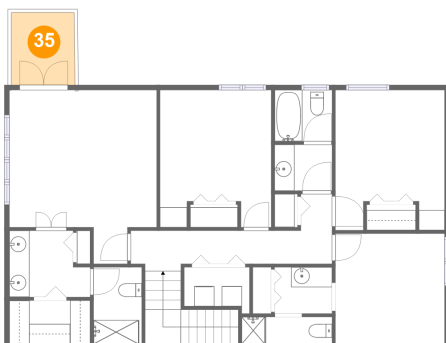
34 Floor 3 - Laundry



Dimensions: 6'6" x 3'10"
Area: 26 sq. ft
Counted as living area: Yes

Heated: Yes
Finished: Yes
Enclosed: Yes
Contiguous: Yes
Permitted: Yes
Wet space: No
Addition: No
Conversion: No

35 Floor 3 - Balcony

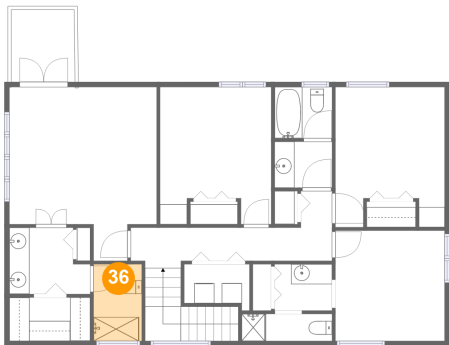


Dimensions: 6'4" x 7'3"
Area: 46 sq. ft
Counted as living area: No

Heated: No
Finished: Yes
Enclosed: No
Contiguous: Yes
Permitted: Yes
Wet space: No
Addition: No
Conversion: No

3271 Links Manor Drive, Country Club Estates, Salem, Salem city, Virginia, United States, 24153

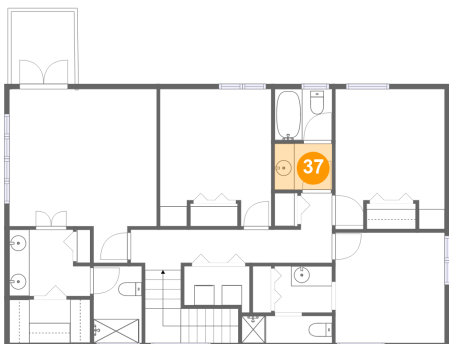
36 Floor 3 - Bath



Dimensions: 4'10" x 7'8"
Area: 37 sq. ft
Counted as living area: Yes

Heated: Yes
Finished: Yes
Enclosed: Yes
Contiguous: Yes
Permitted: Yes
Wet space: Yes
Addition: No
Conversion: No

37 Floor 3 - Bath



Dimensions: 5'9" x 4'7"
Area: 26 sq. ft
Counted as living area: Yes

Heated: Yes
Finished: Yes
Enclosed: Yes
Contiguous: Yes
Permitted: Yes
Wet space: Yes
Addition: No
Conversion: No