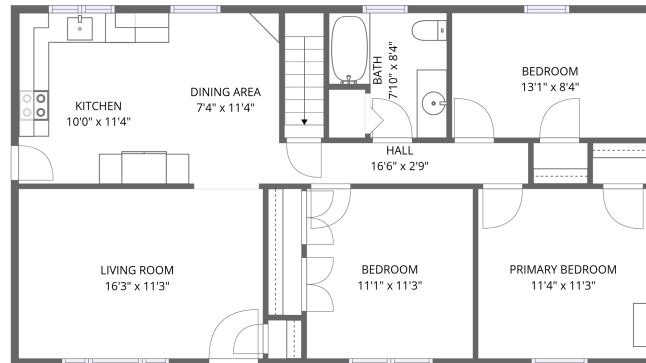
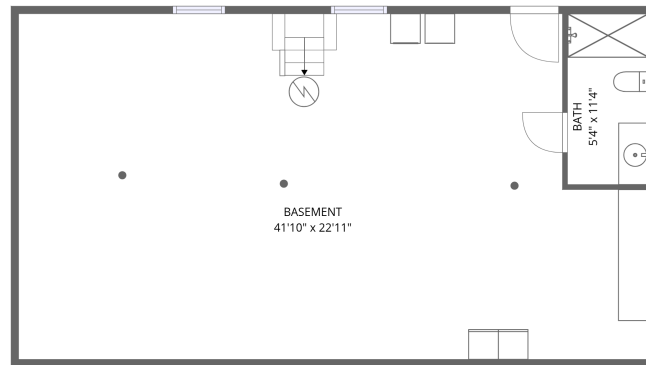


Home data report

6141 Renan Road, Hurt, Pittsylvania County, Virginia, United States, 24563



2nd floor



1st floor

Total Area: 1027 sq. ft

1st Floor: 67 sq. ft, 2nd Floor: 960 sq. ft

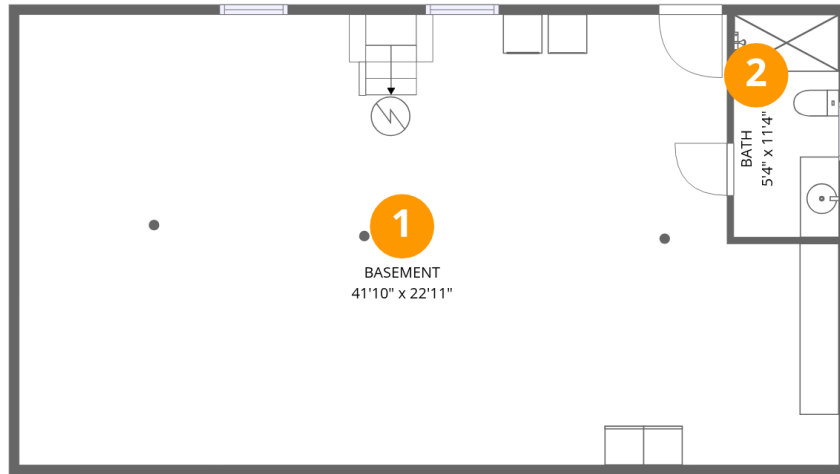
Excluded: Basement 893 sq. ft, Walls: 132 sq. ft

Property summary



Home data report

6141 Renan Road, Hurt, Pittsylvania County, Virginia, United States, 24563



Room dimensions

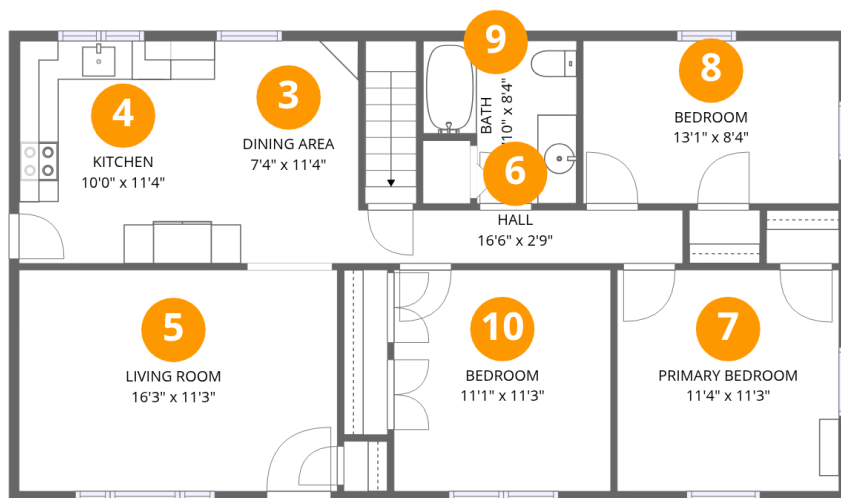
Floor 1

Total:67sqft

Excluded: 893sqft

#		Dimensions	sqft	Counted as living area
1	Basement	41'10" x 22'11"	893 sq. ft	No
2	Bath	5'4" x 11'4"	61 sq. ft	Yes

6141 Renan Road, Hurt, Pittsylvania County, Virginia, United States, 24563



Room dimensions

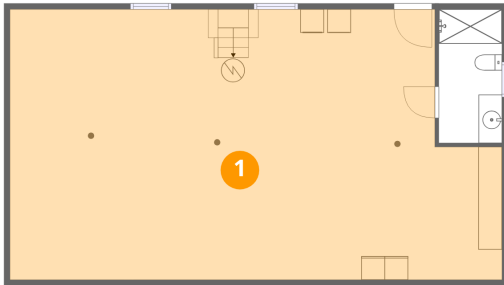
Floor 2

Total:960sqft Excluded: 0sqft

#		Dimensions	sqft	Counted as living area
3	Dining Area	7'4" x 11'4"	83 sq. ft	Yes
4	Kitchen	10'0" x 11'4"	113 sq. ft	Yes
5	Living Room	16'3" x 11'3"	183 sq. ft	Yes
6	Hall	16'6" x 2'9"	45 sq. ft	Yes
7	Primary Bedroom	11'4" x 11'3"	128 sq. ft	Yes
8	Bedroom	13'1" x 8'4"	108 sq. ft	Yes
9	Bath	7'10" x 8'4"	55 sq. ft	Yes
10	Bedroom	11'1" x 11'3"	125 sq. ft	Yes

6141 Renan Road, Hurt, Pittsylvania County, Virginia, United States, 24563

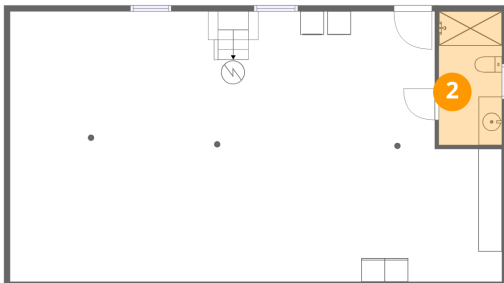
1 Floor 1 - Basement



Dimensions: 41'10" x 22'11"
Area: 893 sq. ft
Counted as living area: No

Heated: Yes
Finished: No
Enclosed: Yes
Contiguous: Yes
Permitted: Yes
Wet space: No
Addition: No
Conversion: No

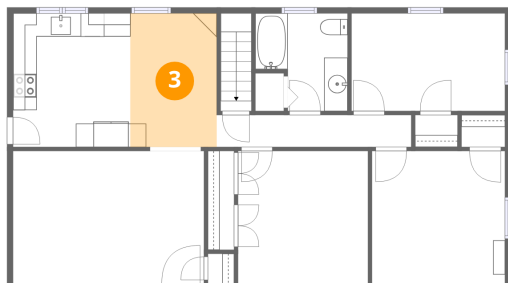
2 Floor 1 - Bath



Dimensions: 5'4" x 11'4"
Area: 61 sq. ft
Counted as living area: No

Heated: Yes
Finished: Yes
Enclosed: Yes
Contiguous: No
Permitted: Yes
Wet space: Yes
Addition: No
Conversion: No

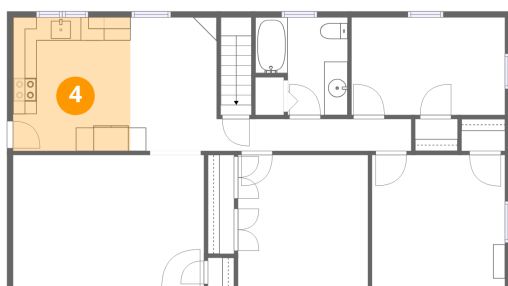
3 Floor 2 - Dining Area



Dimensions: 7'4" x 11'4"
Area: 83 sq. ft
Counted as living area: Yes

Heated: Yes
Finished: Yes
Enclosed: Yes
Contiguous: Yes
Permitted: Yes
Wet space: No
Addition: No
Conversion: No

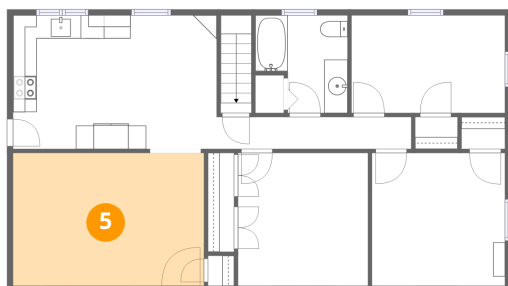
4 Floor 2 - Kitchen



Dimensions: 10'0" x 11'4"
Area: 113 sq. ft
Counted as living area: Yes

Heated: Yes
Finished: Yes
Enclosed: Yes
Contiguous: Yes
Permitted: Yes
Wet space: No
Addition: No
Conversion: No

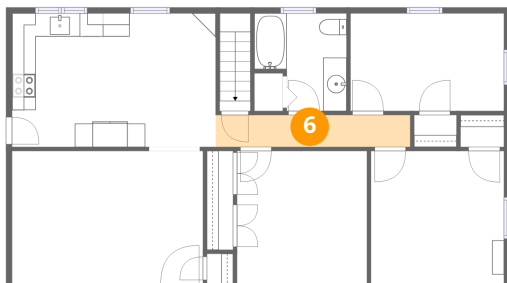
5 Floor 2 - Living Room



Dimensions: 16'3" x 11'3"
Area: 183 sq. ft
Counted as living area: Yes

Heated: Yes
Finished: Yes
Enclosed: Yes
Contiguous: Yes
Permitted: Yes
Wet space: No
Addition: No
Conversion: No

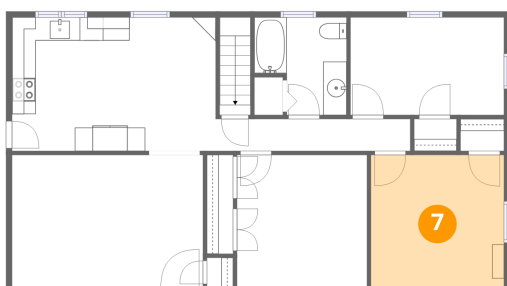
6 Floor 2 - Hall



Dimensions: 16'6" x 2'9"
Area: 45 sq. ft
Counted as living area: Yes

Heated: Yes
Finished: Yes
Enclosed: Yes
Contiguous: Yes
Permitted: Yes
Wet space: No
Addition: No
Conversion: No

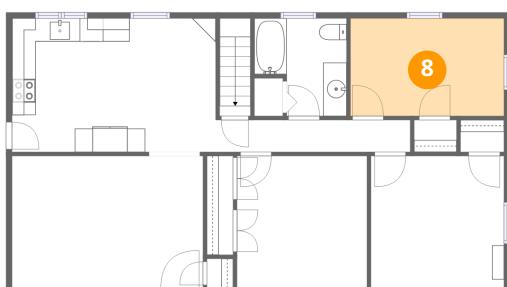
7 Floor 2 - Primary Bedroom



Dimensions: 11'4" x 11'3"
Area: 128 sq. ft
Counted as living area: Yes

Heated: Yes
Finished: Yes
Enclosed: Yes
Contiguous: Yes
Permitted: Yes
Wet space: No
Addition: No
Conversion: No

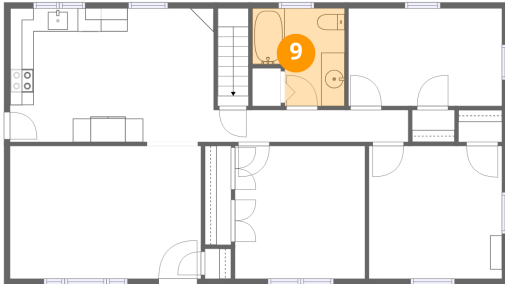
8 Floor 2 - Bedroom



Dimensions: 13'1" x 8'4"
Area: 108 sq. ft
Counted as living area: Yes

Heated: Yes
Finished: Yes
Enclosed: Yes
Contiguous: Yes
Permitted: Yes
Wet space: No
Addition: No
Conversion: No

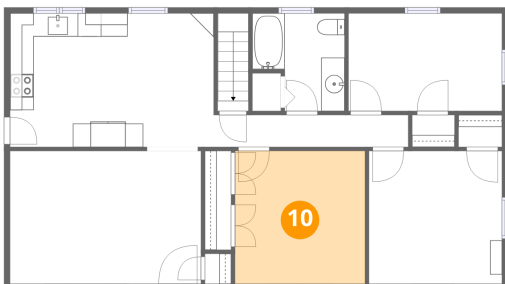
9 Floor 2 - Bath



Dimensions: 7'10" x 8'4"
Area: 55 sq. ft
Counted as living area: Yes

Heated: Yes
Finished: Yes
Enclosed: Yes
Contiguous: Yes
Permitted: Yes
Wet space: Yes
Addition: No
Conversion: No

10 Floor 2 - Bedroom



Dimensions: 11'1" x 11'3"
Area: 125 sq. ft
Counted as living area: Yes

Heated: Yes
Finished: Yes
Enclosed: Yes
Contiguous: Yes
Permitted: Yes
Wet space: No
Addition: No
Conversion: No