

1923 East Bobs Drive, East End, Boise, Ada County, Idaho, United States, 83712, 1923 Bobs



Property Summary



3 floors



5 bedrooms



3 bathrooms



4,531 total sqft

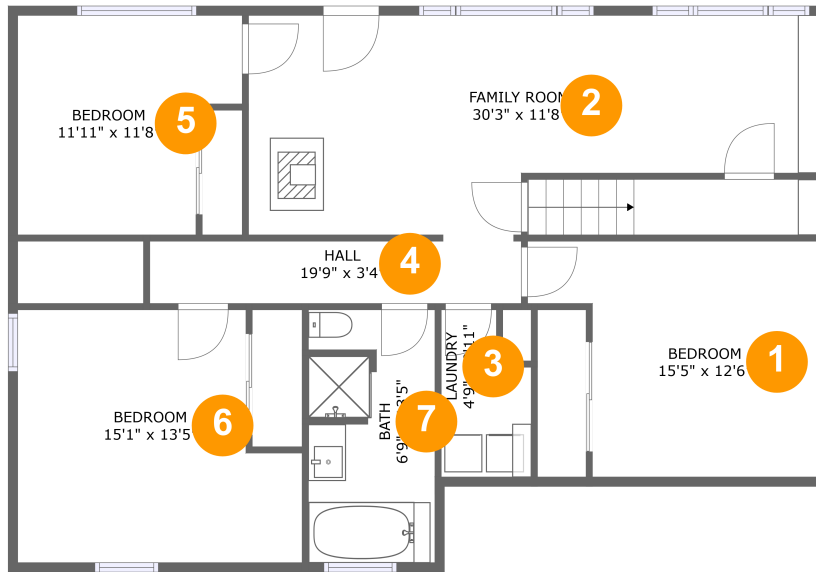


1 garages



3,927 Gross Living Area sqft

1923 East Bobs Drive, East End, Boise, Ada County, Idaho, United States, 83712, 1923 Bobs



Room Dimensions

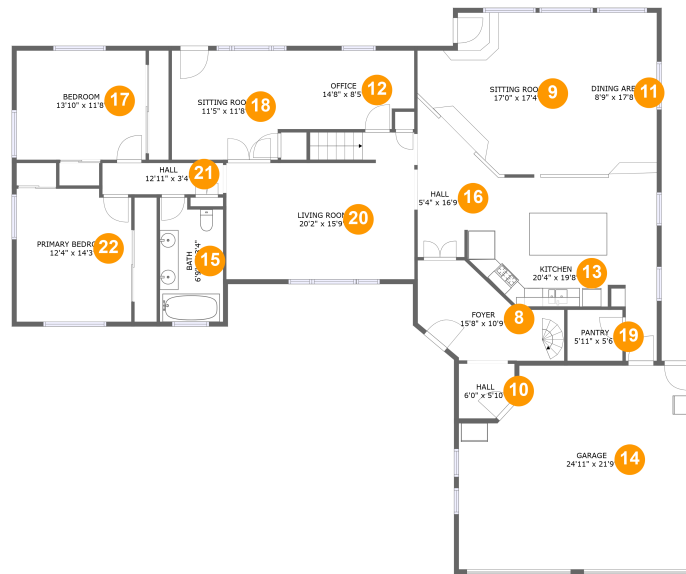
Floor 1

Total sqft: 1216

Living area: 1216

#	Room name	Dimensions	Area (sqft)	Counted as Living Area
1	Bedroom	15'5" x 12'6"	162 sq. ft	Yes
2	Family Room	30'3" x 11'8"	301 sq. ft	Yes
3	Laundry	4'9" x 8'11"	37 sq. ft	Yes
4	Hall	19'9" x 3'4"	65 sq. ft	Yes
5	Bedroom	11'11" x 11'8"	122 sq. ft	Yes
6	Bedroom	15'1" x 13'5"	180 sq. ft	Yes
7	Bath	6'9" x 13'5"	88 sq. ft	Yes

1923 East Bobs Drive, East End, Boise, Ada County, Idaho, United States, 83712, 1923 Bobs



Room Dimensions

Floor 2

Total sqft: 2778

Living area: 2236

#	Room name	Dimensions	Area (sqft)	Counted as Living Area
8	Foyer	15'8" x 10'9"	118 sq. ft	Yes
9	Sitting Room	17'0" x 17'4"	246 sq. ft	Yes
10	Hall	6'0" x 5'10"	33 sq. ft	Yes
11	Dining Area	8'9" x 17'8"	154 sq. ft	Yes
12	Office	14'8" x 8'5"	118 sq. ft	Yes
13	Kitchen	20'4" x 19'8"	291 sq. ft	Yes
14	Garage	24'11" x 21'9"	508 sq. ft	No
15	Bath	6'9" x 13'4"	86 sq. ft	Yes
16	Hall	5'4" x 16'9"	76 sq. ft	Yes
17	Bedroom	13'10" x 11'8"	162 sq. ft	Yes
18	Sitting Room	11'5" x 11'8"	133 sq. ft	Yes

Scan captured on Wed, 15 May 2024 23:52:13 GMT

Information is calculated by CubiCasa technology; deemed highly reliable but not guaranteed.

**1923 East Bobs Drive, East End, Boise, Ada
County, Idaho, United States, 83712, 1923 Bobs**

#	Room name	Dimensions	Area (sqft)	Counted as Living Area
19	Pantry	5'11" x 5'6"	32 sq. ft	Yes
20	Living Room	20'2" x 15'9"	286 sq. ft	Yes
21	Hall	12'11" x 3'4"	44 sq. ft	Yes
22	Primary Bedroom	12'4" x 14'3"	172 sq. ft	Yes

1923 East Bobs Drive, East End, Boise, Ada County, Idaho, United States, 83712, 1923 Bobs



Room Dimensions

Floor 3

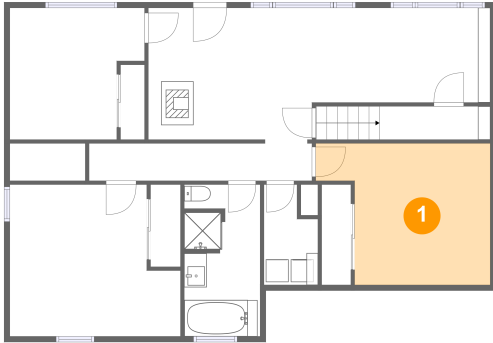
Total sqft: 537

Living area: 475

#	Room name	Dimensions	Area (sqft)	Counted as Living Area
23	Recreation Room	25'8" x 19'7"	428 sq. ft	Yes
24	Bath	9'8" x 6'2"	54 sq. ft	No

1923 East Bobs Drive, East End, Boise, Ada County, Idaho, United States, 83712, 1923 Bobs

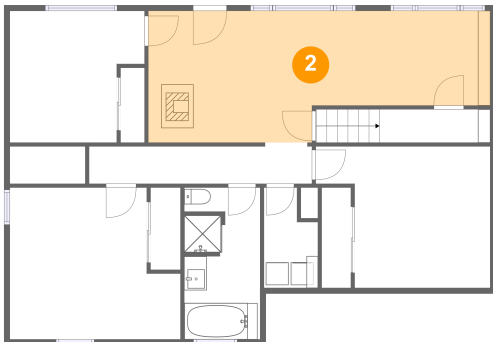
1 Floor 1 - Bedroom



Dimensions: 15'5" x 12'6"
Area: 162 sq. ft
Counted as Living Area:
Yes

Heated: Yes
Finished: Yes
Enclosed: Yes
Contiguous:
Yes
Permitted: Yes
Wet Space: No
Addition: No
Conversion: No

2 Floor 1 - Family Room

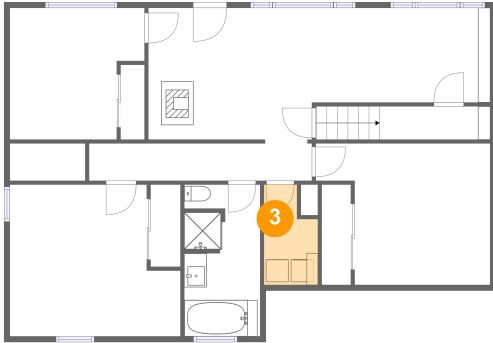


Dimensions: 30'3" x 11'8"
Area: 301 sq. ft
Counted as Living Area:
Yes

Heated: Yes
Finished: Yes
Enclosed: Yes
Contiguous:
Yes
Permitted: Yes
Wet Space: No
Addition: No
Conversion: No

1923 East Bobs Drive, East End, Boise, Ada County, Idaho, United States, 83712, 1923 Bobs

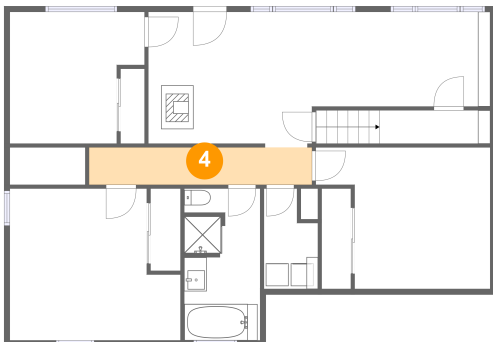
3 Floor 1 - Laundry



Dimensions: 4'9" x 8'11"
Area: 37 sq. ft
Counted as Living Area:
Yes

Heated: Yes
Finished: Yes
Enclosed: Yes
Contiguous:
Yes
Permitted: Yes
Wet Space: No
Addition: No
Conversion: No

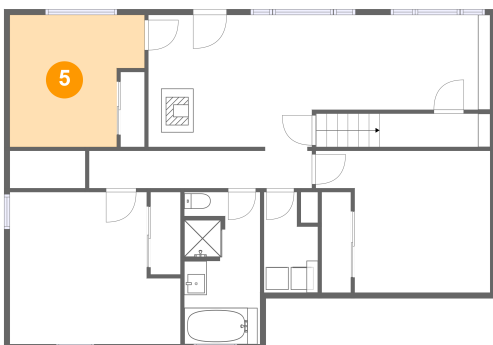
4 Floor 1 - Hall



Dimensions: 19'9" x 3'4"
Area: 65 sq. ft
Counted as Living Area:
Yes

Heated: Yes
Finished: Yes
Enclosed: Yes
Contiguous:
Yes
Permitted: Yes
Wet Space: No
Addition: No
Conversion: No

5 Floor 1 - Bedroom

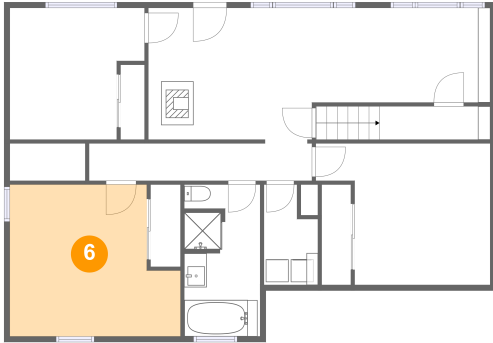


Dimensions: 11'11" x 11'8"
Area: 122 sq. ft
Counted as Living Area:
Yes

Heated: Yes
Finished: Yes
Enclosed: Yes
Contiguous:
Yes
Permitted: Yes
Wet Space: No
Addition: No
Conversion: No

1923 East Bobs Drive, East End, Boise, Ada County, Idaho, United States, 83712, 1923 Bobs

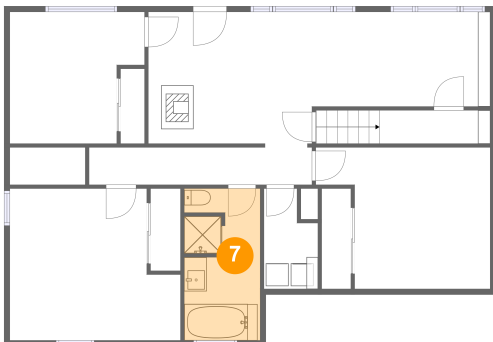
6 Floor 1 - Bedroom



Dimensions: 15'1" x 13'5"
Area: 180 sq. ft
Counted as Living Area:
Yes

Heated: Yes
Finished: Yes
Enclosed: Yes
Contiguous:
Yes
Permitted: Yes
Wet Space: No
Addition: No
Conversion: No

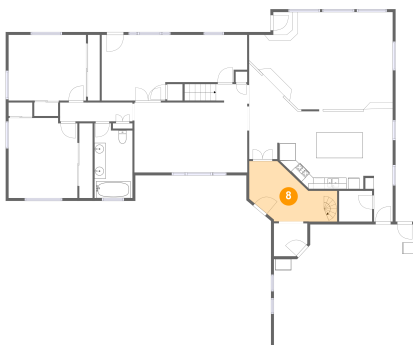
7 Floor 1 - Bath



Dimensions: 6'9" x 13'5"
Area: 88 sq. ft
Counted as Living Area:
Yes

Heated: Yes
Finished: Yes
Enclosed: Yes
Contiguous:
Yes
Permitted: Yes
Wet Space: Yes
Addition: No
Conversion: No

8 Floor 2 - Foyer

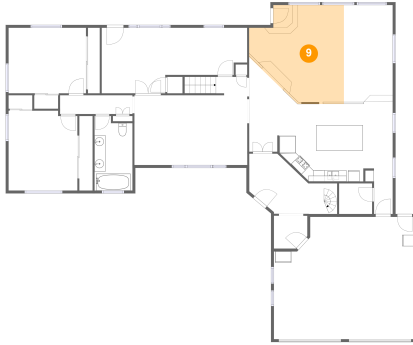


Dimensions: 15'8" x 10'9"
Area: 118 sq. ft
Counted as Living Area:
Yes

Heated: Yes
Finished: Yes
Enclosed: Yes
Contiguous:
Yes
Permitted: Yes
Wet Space: No
Addition: No
Conversion: No

1923 East Bobs Drive, East End, Boise, Ada County, Idaho, United States, 83712, 1923 Bobs

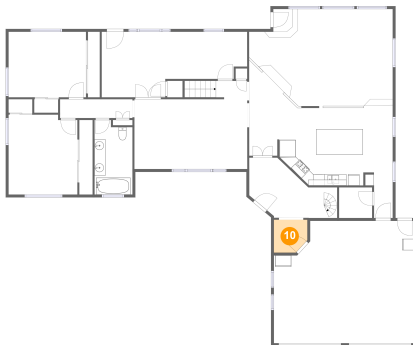
9 Floor 2 - Sitting Room



Dimensions: 17'0" x 17'4"
Area: 246 sq. ft
Counted as Living Area:
Yes

Heated: Yes
Finished: Yes
Enclosed: Yes
Contiguous:
Yes
Permitted: Yes
Wet Space: No
Addition: No
Conversion: No

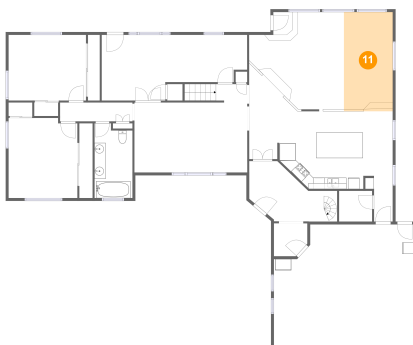
10 Floor 2 - Hall



Dimensions: 6'0" x 5'10"
Area: 33 sq. ft
Counted as Living Area:
Yes

Heated: Yes
Finished: Yes
Enclosed: Yes
Contiguous:
Yes
Permitted: Yes
Wet Space: No
Addition: No
Conversion: No

11 Floor 2 - Dining Area

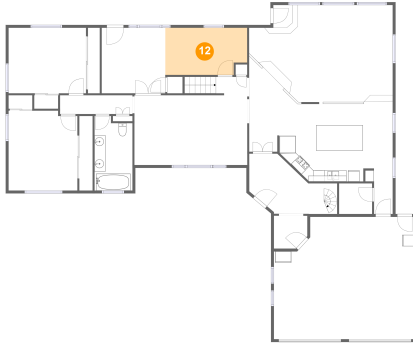


Dimensions: 8'9" x 17'8"
Area: 154 sq. ft
Counted as Living Area:
Yes

Heated: Yes
Finished: Yes
Enclosed: Yes
Contiguous:
Yes
Permitted: Yes
Wet Space: No
Addition: No
Conversion: No

1923 East Bobs Drive, East End, Boise, Ada County, Idaho, United States, 83712, 1923 Bobs

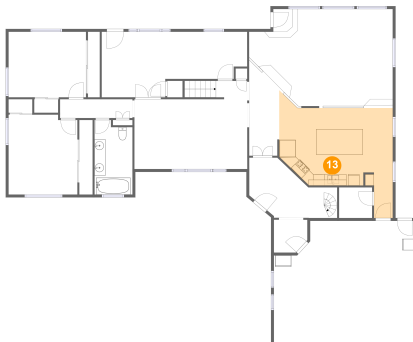
12 Floor 2 - Office



Dimensions: 14'8" x 8'5"
Area: 118 sq. ft
Counted as Living Area:
Yes

Heated: Yes
Finished: Yes
Enclosed: Yes
Contiguous:
Yes
Permitted: Yes
Wet Space: No
Addition: No
Conversion: No

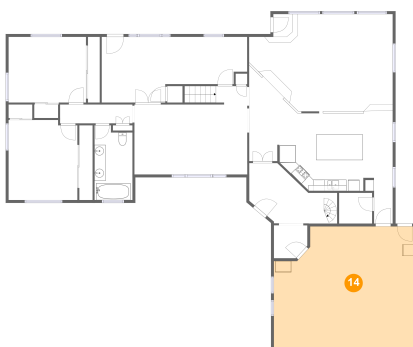
13 Floor 2 - Kitchen



Dimensions: 20'4" x 19'8"
Area: 291 sq. ft
Counted as Living Area:
Yes

Heated: Yes
Finished: Yes
Enclosed: Yes
Contiguous:
Yes
Permitted: Yes
Wet Space: No
Addition: No
Conversion: No

14 Floor 2 - Garage

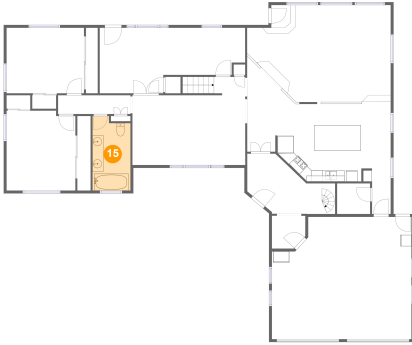


Dimensions: 24'11" x 21'9"
Area: 508 sq. ft
Counted as Living Area: No

Heated: No
Finished: No
Enclosed: Yes
Contiguous: Yes
Permitted: Yes
Wet Space: No
Addition: No
Conversion: No

1923 East Bobs Drive, East End, Boise, Ada County, Idaho, United States, 83712, 1923 Bobs

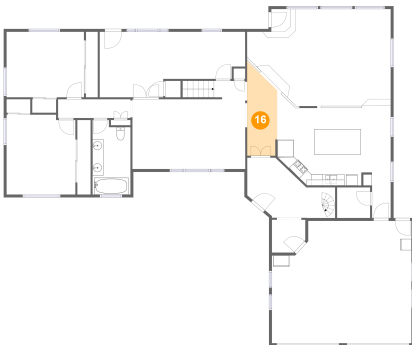
15 Floor 2 - Bath



Dimensions: 6'9" x 13'4"
Area: 86 sq. ft
Counted as Living Area:
Yes

Heated: Yes
Finished: Yes
Enclosed: Yes
Contiguous:
Yes
Permitted: Yes
Wet Space: Yes
Addition: No
Conversion: No

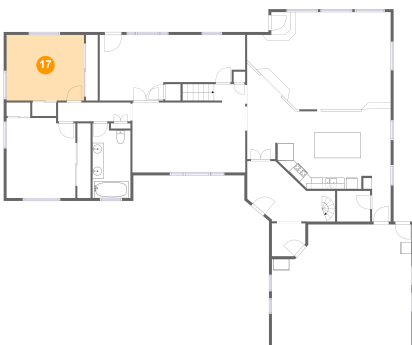
16 Floor 2 - Hall



Dimensions: 5'4" x 16'9"
Area: 76 sq. ft
Counted as Living Area:
Yes

Heated: Yes
Finished: Yes
Enclosed: Yes
Contiguous:
Yes
Permitted: Yes
Wet Space: No
Addition: No
Conversion: No

17 Floor 2 - Bedroom

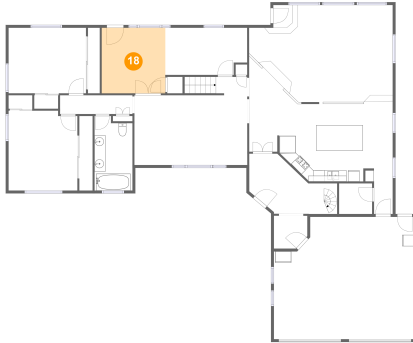


Dimensions: 13'10" x 11'8"
Area: 162 sq. ft
Counted as Living Area:
Yes

Heated: Yes
Finished: Yes
Enclosed: Yes
Contiguous:
Yes
Permitted: Yes
Wet Space: No
Addition: No
Conversion: No

1923 East Bobs Drive, East End, Boise, Ada County, Idaho, United States, 83712, 1923 Bobs

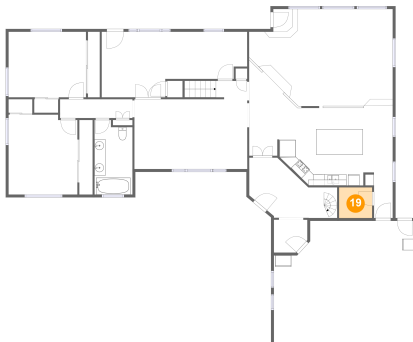
18 Floor 2 - Sitting Room



Dimensions: 11'5" x 11'8"
Area: 133 sq. ft
Counted as Living Area:
Yes

Heated: Yes
Finished: Yes
Enclosed: Yes
Contiguous:
Yes
Permitted: Yes
Wet Space: No
Addition: No
Conversion: No

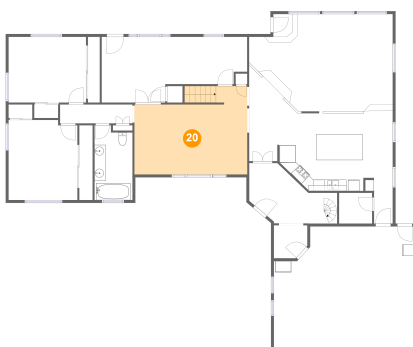
19 Floor 2 - Pantry



Dimensions: 5'11" x 5'6"
Area: 32 sq. ft
Counted as Living Area:
Yes

Heated: Yes
Finished: Yes
Enclosed: Yes
Contiguous:
Yes
Permitted: Yes
Wet Space: No
Addition: No
Conversion: No

20 Floor 2 - Living Room

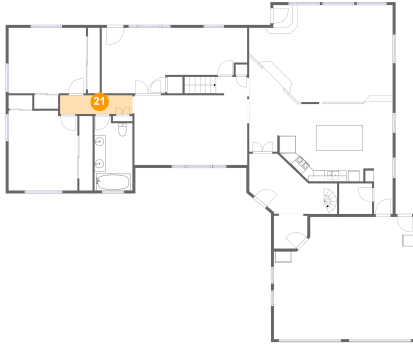


Dimensions: 20'2" x 15'9"
Area: 286 sq. ft
Counted as Living Area:
Yes

Heated: Yes
Finished: Yes
Enclosed: Yes
Contiguous:
Yes
Permitted: Yes
Wet Space: No
Addition: No
Conversion: No

1923 East Bobs Drive, East End, Boise, Ada County, Idaho, United States, 83712, 1923 Bobs

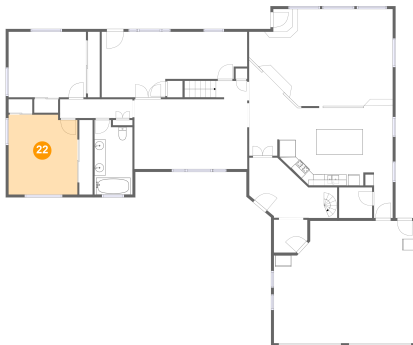
21 Floor 2 - Hall



Dimensions: 12'11" x 3'4"
Area: 44 sq. ft
Counted as Living Area:
Yes

Heated: Yes
Finished: Yes
Enclosed: Yes
Contiguous:
Yes
Permitted: Yes
Wet Space: No
Addition: No
Conversion: No

22 Floor 2 - Primary Bedroom



Dimensions: 12'4" x 14'3"
Area: 172 sq. ft
Counted as Living Area:
Yes

Heated: Yes
Finished: Yes
Enclosed: Yes
Contiguous:
Yes
Permitted: Yes
Wet Space: No
Addition: No
Conversion: No

23 Floor 3 - Recreation Room



Dimensions: 25'8" x 19'7"
Area: 428 sq. ft
Counted as Living Area:
Yes

Heated: Yes
Finished: Yes
Enclosed: Yes
Contiguous:
Yes
Permitted: Yes
Wet Space: No
Addition: No
Conversion: No

1923 East Bobs Drive, East End, Boise, Ada County, Idaho, United States, 83712, 1923 Bobs

24 Floor 3 - Bath



Dimensions: 9'8" x 6'2"
Area: 54 sq. ft
Counted as Living Area: No

Heated: Yes
Finished: Yes
Enclosed: Yes
Contiguous: Yes
Permitted: Yes
Wet Space: Yes
Addition: No
Conversion: No