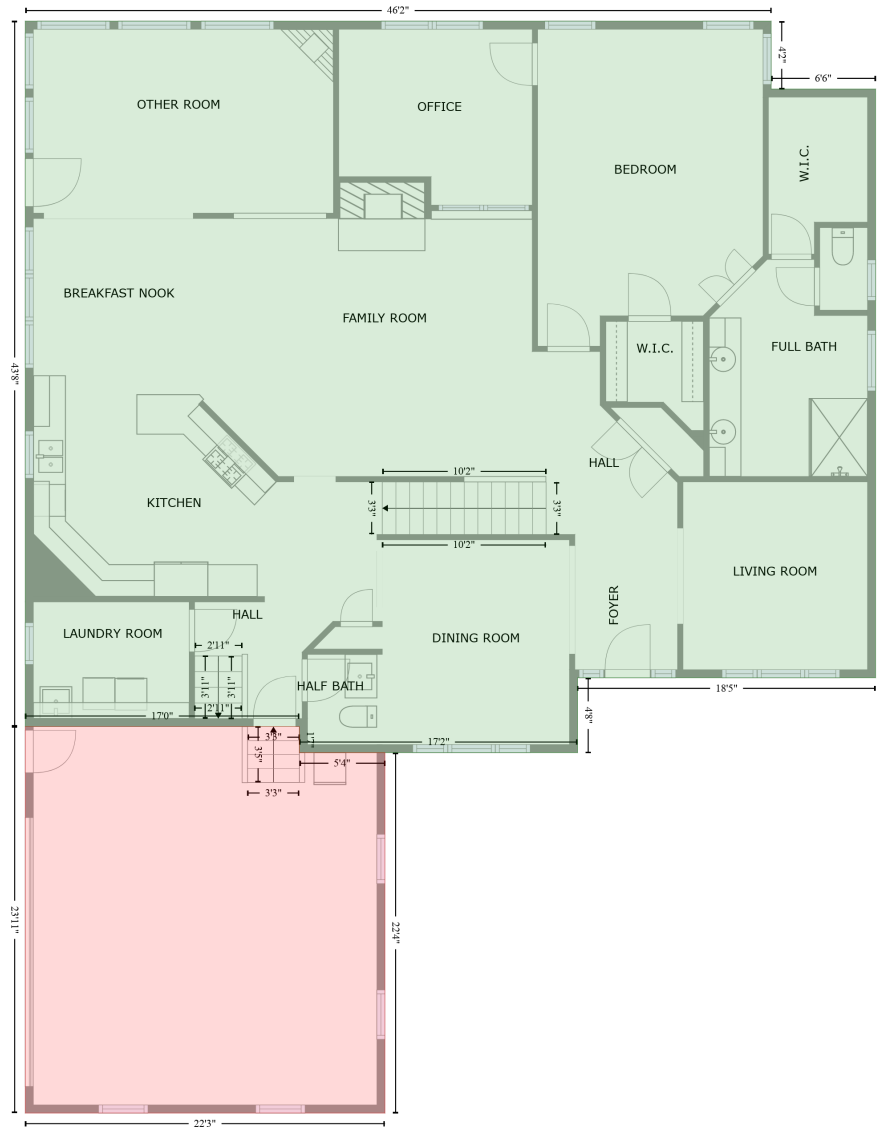


# 302 Otmoor Lane, Preston, Cary, Wake County, North Carolina, United States, 27519

Gross Living Area: 3543 sq. ft

FLOOR 1  
[AREA: 2241]



GARAGE (1)  
[AREA: 524]

Space	Area (sq. ft)	Calculation <small>Coordinate Polygon Area Algorithm using inches</small>
FLOOR 1 (Living area)	2241	$-((38.9 + 592.6) * (8.6 - 8.6) + (592.6 + 592.6) * (8.6 - 59) + (592.6 + 670.2) * (59 - 59) + (670.2 + 670.2) * (59 - 496.2) + (670.2 + 448.9) * (496.2 - 496.2) + (448.9 + 448.9) * (496.2 - 551.8) + (448.9 + 242.4) * (551.8 - 551.8) + (242.4 + 242.4) * (551.8 - 532.5) + (242.4 + 38.9) * (532.5 - 532.5) + (38.9 + 38.9) * (532.5 - 8.6)) * 0.5 * 0.00694$
GARAGE (Non-living area)	524	$-((242.4 + 242.4) * (532.5 - 551.8) + (242.4 + 305.9) * (551.8 - 551.8) + (305.9 + 305.9) * (551.8 - 819.4) + (305.9 + 38.9) * (819.4 - 819.4) + (38.9 + 38.9) * (819.4 - 532.5) + (38.9 + 242.4) *$

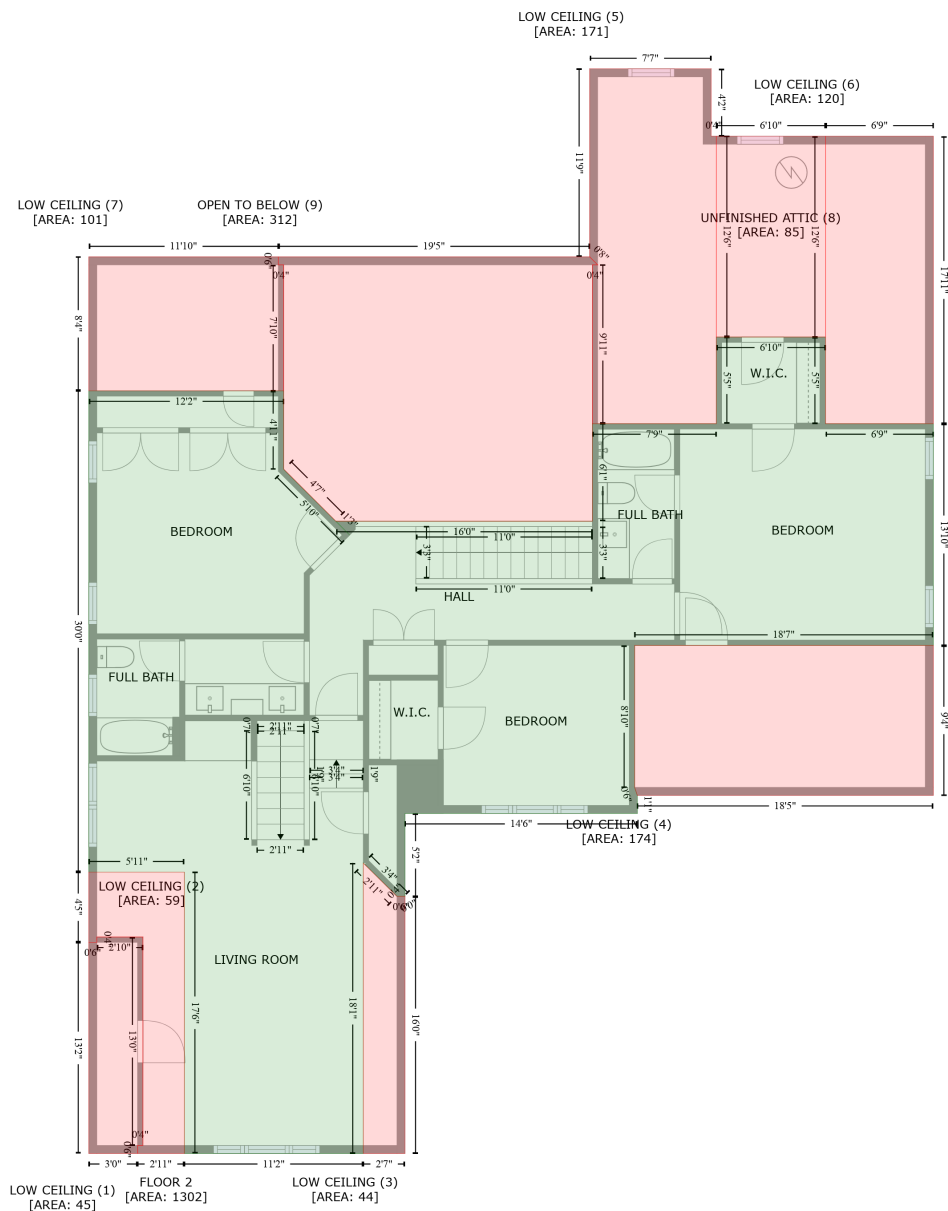
# 302 Otmoor Lane, Preston, Cary, Wake County, North Carolina, United States, 27519

Gross Living Area: 3543 sq. ft

Space	Area (sq. ft)	Calculation <small>Coordinate Polygon Area Algorithm using inches</small>
		$(532.5 - 532.5) * 0.5 * 0.00694$

# 302 Otmoor Lane, Preston, Cary, Wake County, North Carolina, United States, 27519

Gross Living Area: 3543 sq. ft



## Space

## Area (sq. ft)

## Calculation Coordinate Polygon Area Algorithm using inches

FLOOR 2  
(Living area)

1302

$$\begin{aligned}
 & -((589.5 + 589.5) * (209.1 - 273.9) + (589.5 + 670.2) * (273.9 - 273.9) + (670.2 + 670.2) * (273.9 - \\
 & 439.6) + (670.2 + 446.9) * (439.6 - 439.6) + (446.9 + 446.9) * (439.6 - 545.8) + (446.9 + 448.9) * \\
 & (545.8 - 551.8) + (448.9 + 448.9) * (551.8 - 565.2) + (448.9 + 275.2) * (565.2 - 565.2) + (275.2 + \\
 & 275.2) * (565.2 - 627.2) + (275.2 + 269.2) * (627.2 - 627.2) + (269.2 + 257.9) * (627.2 - 615.7) + \\
 & (257.9 + 244.1) * (615.7 - 602.2) + (244.1 + 244.1) * (602.2 - 819.4) + (244.1 + 110.3) * (819.4 - \\
 & 819.4) + (110.3 + 110.3) * (819.4 - 609.1) + (110.3 + 38.9) * (609.1 - 609.1) + (38.9 + 38.9) * \\
 & (609.1 - 249.3) + (38.9 + 184.6) * (249.3 - 249.3) + (184.6 + 184.6) * (249.3 - 307.8) + (184.6 +
 \end{aligned}$$

# 302 Otmoor Lane, Preston, Cary, Wake County, North Carolina, United States, 27519

Gross Living Area: 3543 sq. ft

Space	Area (sq. ft)	Calculation <small>Coordinate Polygon Area Algorithm using inches</small>
		$185 * (307.8 - 308.7) + (185 + 233.9) * (308.7 - 357.2) + (233.9 + 223.7) * (357.2 - 346.8) + (223.7 + 415.3) * (346.8 - 346.8) + (415.3 + 415.3) * (346.8 - 273.9) + (415.3 + 508) * (273.9 - 273.9) + (508 + 508) * (273.9 - 209.1) + (508 + 589.5) * (209.1 - 209.1) * 0.5 * 0.00694$
LOW CEILING (Non-living area)	45	$-((79.4 + 79.4) * (657.6 - 813.4) + (79.4 + 75.4) * (813.4 - 813.4) + (75.4 + 75.4) * (813.4 - 819.4) + (75.4 + 38.9) * (819.4 - 819.4) + (38.9 + 38.9) * (819.4 - 661.6) + (38.9 + 44.9) * (661.6 - 661.6) + (44.9 + 44.9) * (661.6 - 657.6) + (44.9 + 79.4) * (657.6 - 657.6)) * 0.5 * 0.00694$
LOW CEILING (Non-living area)	59	$-((110.3 + 110.3) * (609.1 - 819.4) + (110.3 + 75.4) * (819.4 - 819.4) + (75.4 + 75.4) * (819.4 - 813.4) + (75.4 + 79.4) * (813.4 - 813.4) + (79.4 + 79.4) * (813.4 - 657.6) + (79.4 + 44.9) * (657.6 - 657.6) + (44.9 + 44.9) * (657.6 - 661.6) + (44.9 + 38.9) * (661.6 - 661.6) + (38.9 + 38.9) * (661.6 - 609.1) + (38.9 + 110.3) * (609.1 - 609.1)) * 0.5 * 0.00694$
LOW CEILING (Non-living area)	44	$-((244.1 + 269.2) * (602.4 - 627.2) + (269.2 + 275.2) * (627.2 - 627.2) + (275.2 + 275.2) * (627.2 - 819.4) + (275.2 + 244.1) * (819.4 - 819.4) + (244.1 + 244.1) * (819.4 - 602.4)) * 0.5 * 0.00694$
LOW CEILING (Non-living area)	174	$-((670.2 + 670.2) * (439.6 - 551.8) + (670.2 + 448.9) * (551.8 - 551.8) + (448.9 + 446.9) * (551.8 - 545.8) + (446.9 + 446.9) * (545.8 - 439.6) + (446.9 + 670.2) * (439.6 - 439.6)) * 0.5 * 0.00694$
LOW CEILING (Non-living area)	171	$-((504.1 + 504.1) * (8.6 - 59) + (504.1 + 508) * (59 - 59) + (508 + 508) * (59 - 273.9) + (508 + 415.3) * (273.9 - 273.9) + (415.3 + 415.3) * (273.9 - 155.2) + (415.3 + 419.3) * (155.2 - 155.2) + (419.3 + 413.3) * (155.2 - 149.2) + (413.3 + 413.3) * (149.2 - 8.6) + (413.3 + 504.1) * (8.6 - 8.6)) * 0.5 * 0.00694$
LOW CEILING (Non-living area)	120	$-((670.2 + 670.2) * (59 - 273.9) + (670.2 + 589.5) * (273.9 - 273.9) + (589.5 + 589.5) * (273.9 - 59) + (589.5 + 670.2) * (59 - 59)) * 0.5 * 0.00694$
LOW CEILING (Non-living area)	101	$-((180.6 + 180.6) * (149.2 - 155.2) + (180.6 + 184.6) * (155.2 - 155.2) + (184.6 + 184.6) * (155.2 - 249.3) + (184.6 + 38.9) * (249.3 - 249.3) + (38.9 + 38.9) * (249.3 - 149.2) + (38.9 + 180.6) * (149.2 - 149.2)) * 0.5 * 0.00694$
UNFINISHED ATTIC (Non-living area)	85	$-((589.5 + 589.5) * (59 - 209.1) + (589.5 + 508) * (209.1 - 209.1) + (508 + 508) * (209.1 - 59) + (508 + 589.5) * (59 - 59)) * 0.5 * 0.00694$
OPEN TO BELOW (Non-living area)	312	$-((413.3 + 419.3) * (149.2 - 155.2) + (419.3 + 415.3) * (155.2 - 155.2) + (415.3 + 415.3) * (155.2 - 346.8) + (415.3 + 223.7) * (346.8 - 346.8) + (223.7 + 184.6) * (346.8 - 307.8) + (184.6 + 184.6) * (307.8 - 155.2) + (184.6 + 180.6) * (155.2 - 155.2) + (180.6 + 180.6) * (155.2 - 149.2) + (180.6 + 413.3) * (149.2 - 149.2)) * 0.5 * 0.00694$