



Home report


103 South 124th Street, Beverly Park, Burien, King County,
Washington, United States, 98168





Property summary


 **1** Garages


 **3** Bedrooms

 **1** Bathrooms

 **1** Half baths

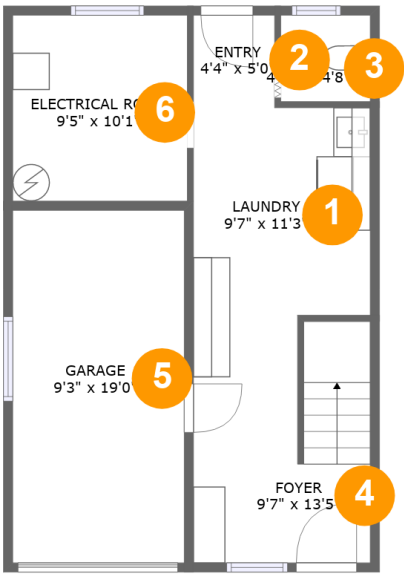
 **3** Floors

 **2,270** Gross living area sqft

 **2,572** Total sqft

Home report

103 South 124th Street, Beverly Park, Burien, King County,
Washington, United States, 98168



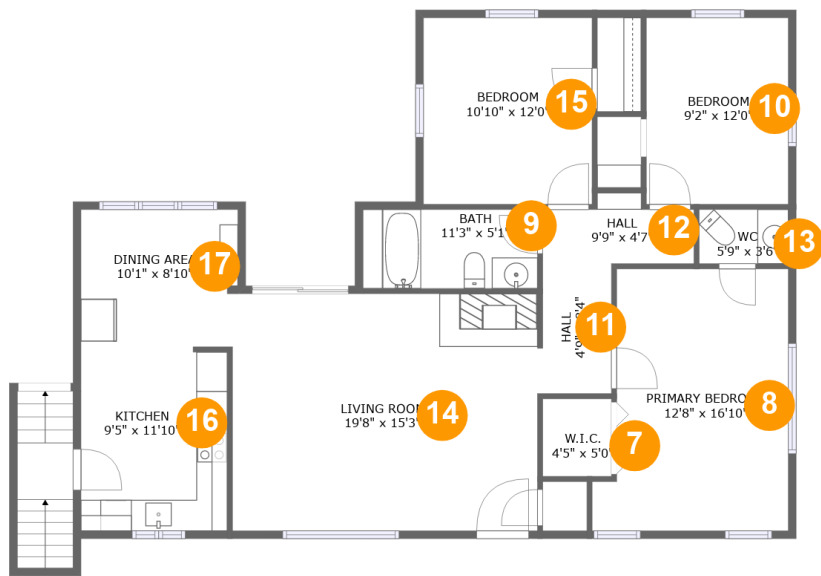
Room dimensions

Floor 1 Total sqft: 624 Living area: 322

#		Dimensions	sqft	Counted as living area
1	Laundry	9'7" x 11'3"	107 sq. ft	Yes
2	Entry	4'4" x 5'0"	22 sq. ft	Yes
3	WC	4'10" x 4'8"	23 sq. ft	Yes
4	Foyer	9'7" x 13'5"	124 sq. ft	Yes
5	Garage	9'3" x 19'0"	177 sq. ft	No
6	Electrical Room	9'5" x 10'1"	95 sq. ft	No

Home report

103 South 124th Street, Beverly Park, Burien, King County,
Washington, United States, 98168



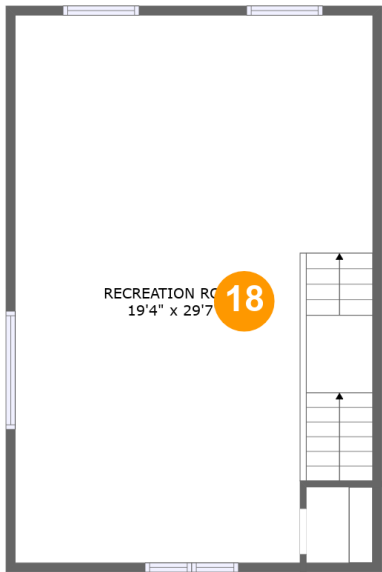
Room dimensions

Floor 2 Total sqft: 1324 Living area: 1324

#		Dimensions	sqft	Counted as living area
7	W.I.C.	4'5" x 5'0"	22 sq. ft	Yes
8	Primary Bedroom	12'8" x 16'10"	191 sq. ft	Yes
9	Bath	11'3" x 5'1"	57 sq. ft	Yes
10	Bedroom	9'2" x 12'0"	110 sq. ft	Yes
11	Hall	4'9" x 8'4"	38 sq. ft	Yes
12	Hall	9'9" x 4'7"	37 sq. ft	Yes
13	WC	5'9" x 3'6"	20 sq. ft	Yes
14	Living Room	19'8" x 15'3"	300 sq. ft	Yes
15	Bedroom	10'10" x 12'0"	130 sq. ft	Yes
16	Kitchen	9'5" x 11'10"	111 sq. ft	Yes
17	Dining Area	10'1" x 8'10"	88 sq. ft	Yes

Home report

103 South 124th Street, Beverly Park, Burien, King County,
Washington, United States, 98168



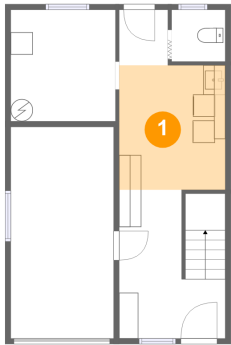
Room dimensions

Floor 3 Total sqft: 624 Living area: 624

#		Dimensions	sqft	Counted as living area
18	Recreation Room	19'4" x 29'7"	556 sq. ft	Yes

103 South 124th Street, Beverly Park, Burien, King County,
Washington, United States, 98168

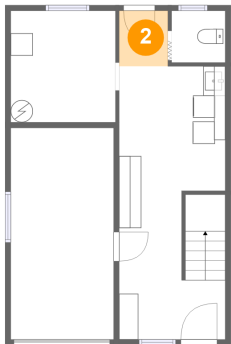
1 Floor 1 - Laundry



Dimensions: 9'7" x 11'3"
Area: 107 sq. ft
Counted as living area: Yes

Heated: Yes
Finished: Yes
Enclosed: Yes
Contiguous: Yes
Permitted: Yes
Wet space: No
Addition: No
Conversion: No

2 Floor 1 - Entry



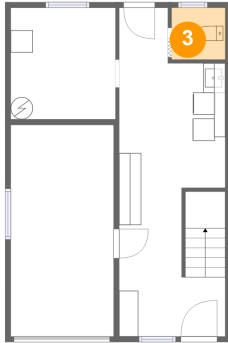
Dimensions: 4'4" x 5'0"
Area: 22 sq. ft
Counted as living area: Yes

Heated: Yes
Finished: Yes
Enclosed: Yes
Contiguous: Yes
Permitted: Yes
Wet space: No
Addition: No
Conversion: No

Home report

103 South 124th Street, Beverly Park, Burien, King County,
Washington, United States, 98168

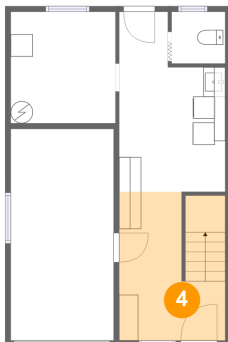
3 Floor 1 - WC



Dimensions: 4'10" x 4'8"
Area: 23 sq. ft
Counted as living area: Yes

Heated: Yes
Finished: Yes
Enclosed: Yes
Contiguous: Yes
Permitted: Yes
Wet space: Yes
Addition: No
Conversion: No

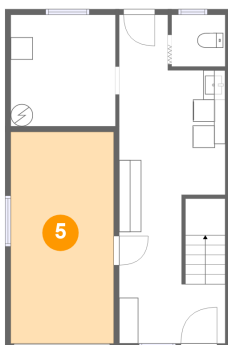
4 Floor 1 - Foyer



Dimensions: 9'7" x 13'5"
Area: 124 sq. ft
Counted as living area: Yes

Heated: Yes
Finished: Yes
Enclosed: Yes
Contiguous: Yes
Permitted: Yes
Wet space: No
Addition: No
Conversion: No

5 Floor 1 - Garage

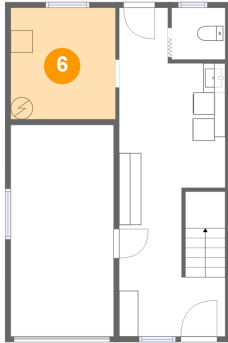


Dimensions: 9'3" x 19'0"
Area: 177 sq. ft
Counted as living area: No

Heated: No
Finished: No
Enclosed: Yes
Contiguous: Yes
Permitted: Yes
Wet space: No
Addition: No
Conversion: No

103 South 124th Street, Beverly Park, Burien, King County,
Washington, United States, 98168

6 Floor 1 - Electrical Room



Dimensions: 9'5" x 10'1"
Area: 95 sq. ft
Counted as living area: No

Heated: No
Finished: No
Enclosed: Yes
Contiguous: Yes
Permitted: Yes
Wet space: No
Addition: No
Conversion: No

7 Floor 2 - W.I.C.



Dimensions: 4'5" x 5'0"
Area: 22 sq. ft
Counted as living area: Yes

Heated: Yes
Finished: Yes
Enclosed: Yes
Contiguous: Yes
Permitted: Yes
Wet space: No
Addition: No
Conversion: No

8 Floor 2 - Primary Bedroom



Dimensions: 12'8" x 16'10"
Area: 191 sq. ft
Counted as living area: Yes

Heated: Yes
Finished: Yes
Enclosed: Yes
Contiguous: Yes
Permitted: Yes
Wet space: No
Addition: No
Conversion: No

Home report

103 South 124th Street, Beverly Park, Burien, King County,
Washington, United States, 98168

9 Floor 2 - Bath



Dimensions: 11'3" x 5'1"
Area: 57 sq. ft
Counted as living area: Yes

Heated: Yes
Finished: Yes
Enclosed: Yes
Contiguous: Yes
Permitted: Yes
Wet space: Yes
Addition: No
Conversion: No

10 Floor 2 - Bedroom



Dimensions: 9'2" x 12'0"
Area: 110 sq. ft
Counted as living area: Yes

Heated: Yes
Finished: Yes
Enclosed: Yes
Contiguous: Yes
Permitted: Yes
Wet space: No
Addition: No
Conversion: No

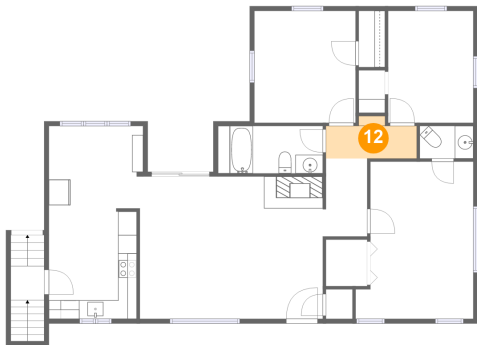
11 Floor 2 - Hall



Dimensions: 4'9" x 8'4"
Area: 38 sq. ft
Counted as living area: Yes

Heated: Yes
Finished: Yes
Enclosed: Yes
Contiguous: Yes
Permitted: Yes
Wet space: No
Addition: No
Conversion: No

12 Floor 2 - Hall



Dimensions: 9'9" x 4'7"
Area: 37 sq. ft
Counted as living area: Yes

Heated: Yes
Finished: Yes
Enclosed: Yes
Contiguous: Yes
Permitted: Yes
Wet space: No
Addition: No
Conversion: No

13 Floor 2 - WC



Dimensions: 5'9" x 3'6"
Area: 20 sq. ft
Counted as living area: Yes

Heated: Yes
Finished: Yes
Enclosed: Yes
Contiguous: Yes
Permitted: Yes
Wet space: Yes
Addition: No
Conversion: No

14 Floor 2 - Living Room

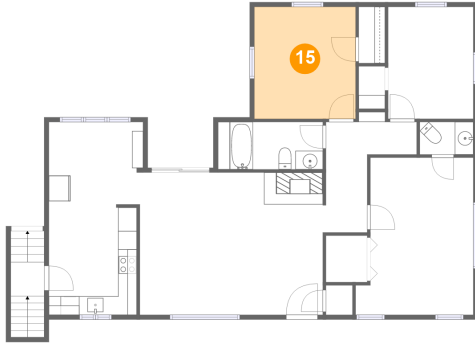


Dimensions: 19'8" x 15'3"
Area: 300 sq. ft
Counted as living area: Yes

Heated: Yes
Finished: Yes
Enclosed: Yes
Contiguous: Yes
Permitted: Yes
Wet space: No
Addition: No
Conversion: No

103 South 124th Street, Beverly Park, Burien, King County,
Washington, United States, 98168

15 Floor 2 - Bedroom



Dimensions: 10'10" x 12'0"
Area: 130 sq. ft
Counted as living area: Yes

Heated: Yes
Finished: Yes
Enclosed: Yes
Contiguous: Yes
Permitted: Yes
Wet space: No
Addition: No
Conversion: No

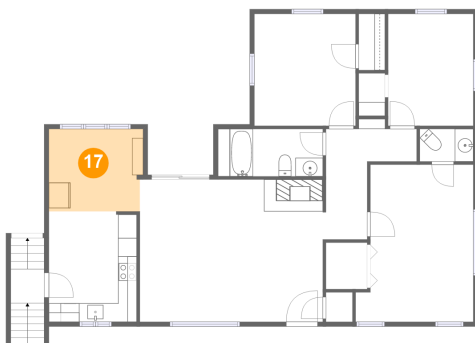
16 Floor 2 - Kitchen



Dimensions: 9'5" x 11'10"
Area: 111 sq. ft
Counted as living area: Yes

Heated: Yes
Finished: Yes
Enclosed: Yes
Contiguous: Yes
Permitted: Yes
Wet space: No
Addition: No
Conversion: No

17 Floor 2 - Dining Area

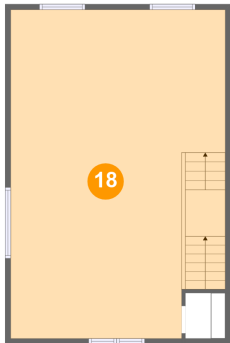


Dimensions: 10'1" x 8'10"
Area: 88 sq. ft
Counted as living area: Yes

Heated: Yes
Finished: Yes
Enclosed: Yes
Contiguous: Yes
Permitted: Yes
Wet space: No
Addition: No
Conversion: No

103 South 124th Street, Beverly Park, Burien, King County,
Washington, United States, 98168

18 Floor 3 - Recreation Room



Dimensions: 19'4" x 29'7"
Area: 556 sq. ft
Counted as living area: Yes

Heated: Yes
Finished: Yes
Enclosed: Yes
Contiguous: Yes
Permitted: Yes
Wet space: No
Addition: No
Conversion: No