

Home report

6 Kashmir Drive, Millville, Salem, Rockingham County, New Hampshire, United States, 03079



Total Area: 4395 sq. ft

Below Ground: 1199 sq. ft, Floor 2: 1681 sq. ft, Floor 3: 1515 sq. ft

Excluded: Storage 43 sq. ft, Utility 299 sq. ft, Garage 660 sq. ft, Fireplace 8 sq. ft, Low ceiling 43 sq. ft, Open to below 87 sq. ft, Walls: 354 sq. ft

Property summary

 **3** Floors

 **4** Bedrooms

 **3** Bathrooms

Home report

6 Kashmir Drive, Millville, Salem, Rockingham County, New Hampshire, United States, 03079

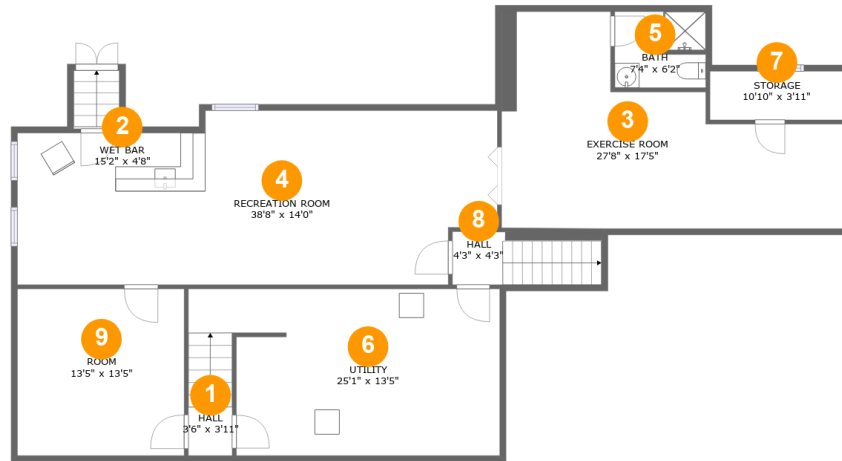


1
Half baths



1
Garages

6 Kashmir Drive, Millville, Salem, Rockingham County, New
Hampshire, United States, 03079



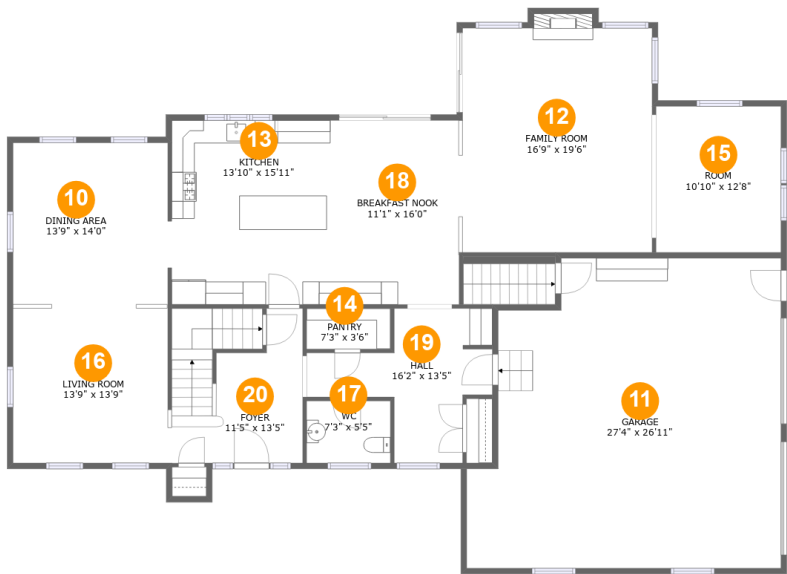
Floor 1 Below ground

Excluded: 342sqft

#		Max Dimensions	sqft	Included
1	Hall	3'6" x 3'11"	35 sq. ft	Yes
2	Wet Bar	15'2" x 4'8"	71 sq. ft	Yes
3	Exercise Room	27'8" x 17'5"	332 sq. ft	Yes
4	Recreation Room	38'8" x 14'0"	428 sq. ft	Yes
5	Bath	7'4" x 6'2"	44 sq. ft	Yes
6	Utility	25'1" x 13'5"	298 sq. ft	No
7	Storage	10'10" x 3'11"	43 sq. ft	No
8	Hall	4'3" x 4'3"	51 sq. ft	Yes
9	Room	13'5" x 13'5"	181 sq. ft	Yes

Home report

6 Kashmir Drive, Millville, Salem, Rockingham County, New Hampshire, United States, 03079



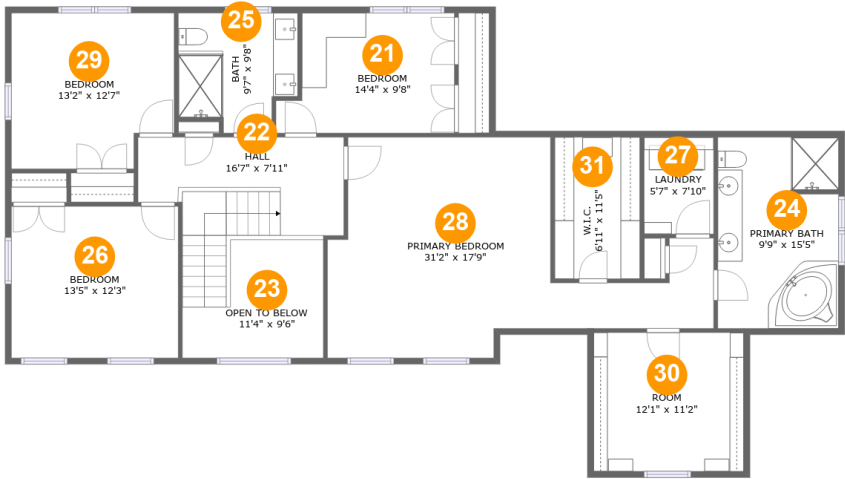
Room dimensions

Floor 2 Total:1681sqft Excluded: 668sqft

#		Max Dimensions	sqft	Included
10	Dining Area	13'9" x 14'0"	190 sq. ft	Yes
11	Garage	27'4" x 26'11"	660 sq. ft	No
12	Family Room	16'9" x 19'6"	330 sq. ft	Yes
13	Kitchen	13'10" x 15'11"	222 sq. ft	Yes
14	Pantry	7'3" x 3'6"	26 sq. ft	Yes
15	Room	10'10" x 12'8"	138 sq. ft	Yes
16	Living Room	13'9" x 13'9"	187 sq. ft	Yes
17	WC	7'3" x 5'5"	39 sq. ft	Yes
18	Breakfast Nook	11'1" x 16'0"	177 sq. ft	Yes
19	Hall	16'2" x 13'5"	127 sq. ft	Yes
20	Foyer	11'5" x 13'5"	149 sq. ft	Yes

Home report

6 Kashmir Drive, Millville, Salem, Rockingham County, New Hampshire, United States, 03079



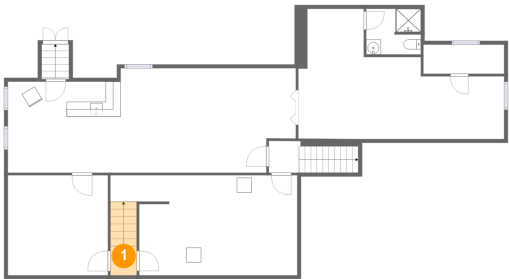
Room dimensions

Floor 3

Total:1515sqft Excluded: 130sqft

#		Max Dimensions	sqft	Included
21	Bedroom	14'4" x 9'8"	124 sq. ft	Yes
22	Hall	16'7" x 7'11"	147 sq. ft	Yes
23	Open To Below	11'4" x 9'6"	87 sq. ft	No
24	Primary Bath	9'9" x 15'5"	149 sq. ft	Yes
25	Bath	9'7" x 9'8"	83 sq. ft	Yes
26	Bedroom	13'5" x 12'3"	164 sq. ft	Yes
27	Laundry	5'7" x 7'10"	44 sq. ft	Yes
28	Primary Bedroom	31'2" x 17'9"	357 sq. ft	Yes
29	Bedroom	13'2" x 12'7"	155 sq. ft	Yes
30	Room	12'1" x 11'2"	92 sq. ft	Yes
31	W.I.C.	6'11" x 11'5"	79 sq. ft	Yes

1 Floor 1 - Hall



Max Dimensions: 3'6" x 3'11"
Calculated Area: 35 sq. ft
Included: Yes

Heated: Yes
Finished: Yes
Enclosed: Yes
Contiguous: Yes
Permitted: Yes
Wet space: No
Addition: No
Conversion: No

2 Floor 1 - Wet Bar

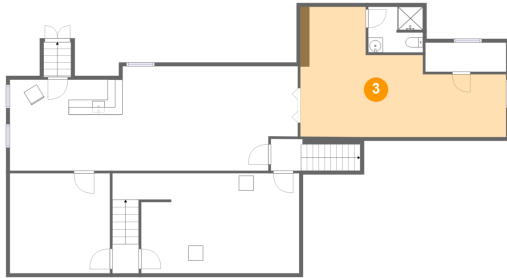


Max Dimensions: 15'2" x 4'8"
Calculated Area: 71 sq. ft
Included: Yes

Heated: Yes
Finished: Yes
Enclosed: Yes
Contiguous: Yes
Permitted: Yes
Wet space: No
Addition: No
Conversion: No

6 Kashmir Drive, Millville, Salem, Rockingham County, New Hampshire, United States, 03079

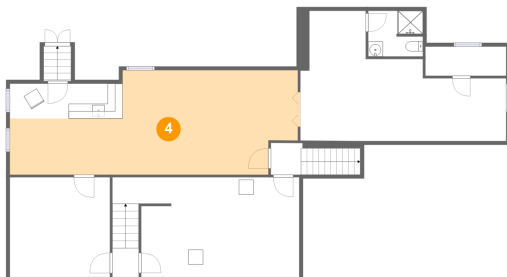
3 Floor 1 - Exercise Room



Max Dimensions: 27'8" x 17'5"
Calculated Area: 332 sq. ft
Included: Yes

Heated: Yes
Finished: Yes
Enclosed: Yes
Contiguous: Yes
Permitted: Yes
Wet space: No
Addition: No
Conversion: No

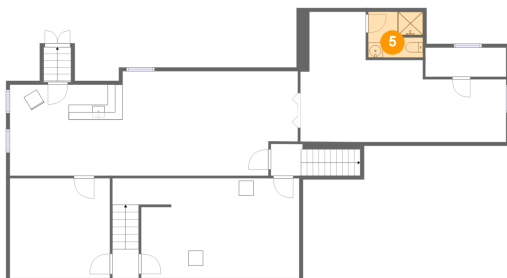
4 Floor 1 - Recreation Room



Max Dimensions: 38'8" x 14'0"
Calculated Area: 428 sq. ft
Included: Yes

Heated: Yes
Finished: Yes
Enclosed: Yes
Contiguous: Yes
Permitted: Yes
Wet space: No
Addition: No
Conversion: No

5 Floor 1 - Bath

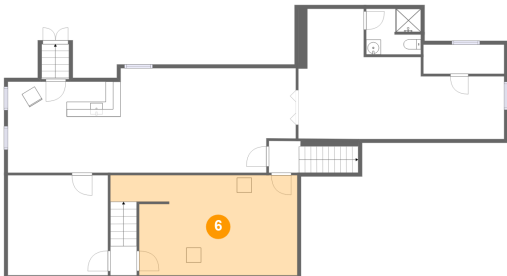


Max Dimensions: 7'4" x 6'2"
Calculated Area: 44 sq. ft
Included: Yes

Heated: Yes
Finished: Yes
Enclosed: Yes
Contiguous: Yes
Permitted: Yes
Wet space: Yes
Addition: No
Conversion: No

6 Kashmir Drive, Millville, Salem, Rockingham County, New Hampshire, United States, 03079

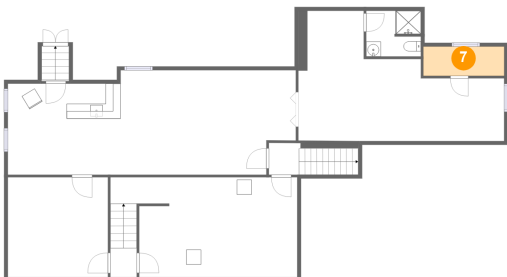
6 Floor 1 - Utility



Max Dimensions: 25'1" x 13'5"
Calculated Area: 298 sq. ft
Included: No

Heated: Yes
Finished: No
Enclosed: Yes
Contiguous: Yes
Permitted: Yes
Wet space: No
Addition: No
Conversion: No

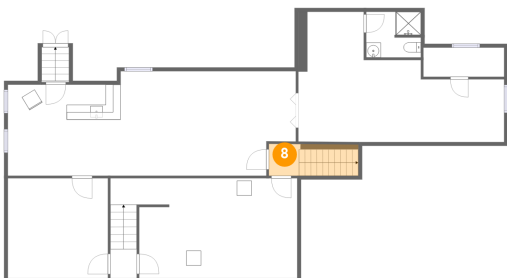
7 Floor 1 - Storage



Max Dimensions: 10'10" x 3'11"
Calculated Area: 43 sq. ft
Included: No

Heated: No
Finished: No
Enclosed: No
Contiguous: Yes
Permitted: Yes
Wet space: No
Addition: No
Conversion: No

8 Floor 1 - Hall



Max Dimensions: 4'3" x 4'3"
Calculated Area: 51 sq. ft
Included: Yes

Heated: Yes
Finished: Yes
Enclosed: Yes
Contiguous: Yes
Permitted: Yes
Wet space: No
Addition: No
Conversion: No

6 Kashmir Drive, Millville, Salem, Rockingham County, New Hampshire, United States, 03079

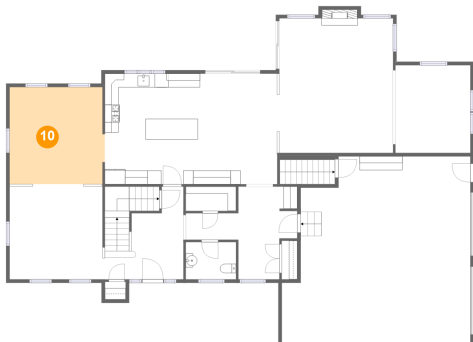
9 Floor 1 - Room



Max Dimensions: 13'5" x 13'5"
Calculated Area: 181 sq. ft
Included: Yes

Heated: Yes
Finished: Yes
Enclosed: Yes
Contiguous: Yes
Permitted: Yes
Wet space: No
Addition: No
Conversion: No

10 Floor 2 - Dining Area



Max Dimensions: 13'9" x 14'0"
Calculated Area: 190 sq. ft
Included: Yes

Heated: Yes
Finished: Yes
Enclosed: Yes
Contiguous: Yes
Permitted: Yes
Wet space: No
Addition: No
Conversion: No

11 Floor 2 - Garage



Max Dimensions: 27'4" x 26'11"
Calculated Area: 660 sq. ft
Included: No

Heated: No
Finished: No
Enclosed: Yes
Contiguous: Yes
Permitted: Yes
Wet space: No
Addition: No
Conversion: No

6 Kashmir Drive, Millville, Salem, Rockingham County, New Hampshire, United States, 03079

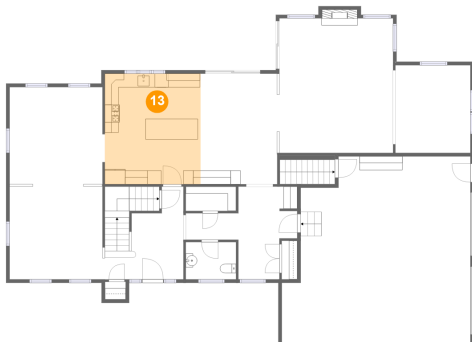
12 Floor 2 - Family Room



Max Dimensions: 16'9" x 19'6"
Calculated Area: 330 sq. ft
Included: Yes

Heated: Yes
Finished: Yes
Enclosed: Yes
Contiguous: Yes
Permitted: Yes
Wet space: No
Addition: No
Conversion: No

13 Floor 2 - Kitchen



Max Dimensions: 13'10" x 15'11"
Calculated Area: 222 sq. ft
Included: Yes

Heated: Yes
Finished: Yes
Enclosed: Yes
Contiguous: Yes
Permitted: Yes
Wet space: No
Addition: No
Conversion: No

14 Floor 2 - Pantry



Max Dimensions: 7'3" x 3'6"
Calculated Area: 26 sq. ft
Included: Yes

Heated: Yes
Finished: Yes
Enclosed: Yes
Contiguous: Yes
Permitted: Yes
Wet space: No
Addition: No
Conversion: No

6 Kashmir Drive, Millville, Salem, Rockingham County, New Hampshire, United States, 03079

15 Floor 2 - Room



Max Dimensions: 10'10" x 12'8"
Calculated Area: 138 sq. ft
Included: Yes

Heated: Yes
Finished: Yes
Enclosed: Yes
Contiguous: Yes
Permitted: Yes
Wet space: No
Addition: No
Conversion: No

16 Floor 2 - Living Room



Max Dimensions: 13'9" x 13'9"
Calculated Area: 187 sq. ft
Included: Yes

Heated: Yes
Finished: Yes
Enclosed: Yes
Contiguous: Yes
Permitted: Yes
Wet space: No
Addition: No
Conversion: No

17 Floor 2 - WC



Max Dimensions: 7'3" x 5'5"
Calculated Area: 39 sq. ft
Included: Yes

Heated: Yes
Finished: Yes
Enclosed: Yes
Contiguous: Yes
Permitted: Yes
Wet space: Yes
Addition: No
Conversion: No

6 Kashmir Drive, Millville, Salem, Rockingham County, New Hampshire, United States, 03079

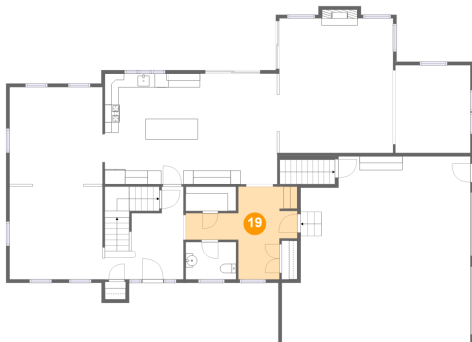
18 Floor 2 - Breakfast Nook



Max Dimensions: 11'1" x 16'0"
Calculated Area: 177 sq. ft
Included: Yes

Heated: Yes
Finished: Yes
Enclosed: Yes
Contiguous: Yes
Permitted: Yes
Wet space: No
Addition: No
Conversion: No

19 Floor 2 - Hall



Max Dimensions: 16'2" x 13'5"
Calculated Area: 127 sq. ft
Included: Yes

Heated: Yes
Finished: Yes
Enclosed: Yes
Contiguous: Yes
Permitted: Yes
Wet space: No
Addition: No
Conversion: No

20 Floor 2 - Foyer



Max Dimensions: 11'5" x 13'5"
Calculated Area: 149 sq. ft
Included: Yes

Heated: Yes
Finished: Yes
Enclosed: Yes
Contiguous: Yes
Permitted: Yes
Wet space: No
Addition: No
Conversion: No

6 Kashmir Drive, Millville, Salem, Rockingham County, New Hampshire, United States, 03079

21 Floor 3 - Bedroom



Max Dimensions: 14'4" x 9'8"
Calculated Area: 124 sq. ft
Included: Yes

Heated: Yes
Finished: Yes
Enclosed: Yes
Contiguous: Yes
Permitted: Yes
Wet space: No
Addition: No
Conversion: No

22 Floor 3 - Hall



Max Dimensions: 16'7" x 7'11"
Calculated Area: 147 sq. ft
Included: Yes

Heated: Yes
Finished: Yes
Enclosed: Yes
Contiguous: Yes
Permitted: Yes
Wet space: No
Addition: No
Conversion: No

23 Floor 3 - Open To Below



Max Dimensions: 11'4" x 9'6"
Calculated Area: 87 sq. ft
Included: No

Heated: No
Finished: No
Enclosed: No
Contiguous: Yes
Permitted: No
Wet space: No
Addition: No
Conversion: No

6 Kashmir Drive, Millville, Salem, Rockingham County, New Hampshire, United States, 03079

24 Floor 3 - Primary Bath



Max Dimensions: 9'9" x 15'5"
Calculated Area: 149 sq. ft
Included: Yes

Heated: Yes
Finished: Yes
Enclosed: Yes
Contiguous: Yes
Permitted: Yes
Wet space: Yes
Addition: No
Conversion: No

25 Floor 3 - Bath



Max Dimensions: 9'7" x 9'8"
Calculated Area: 83 sq. ft
Included: Yes

Heated: Yes
Finished: Yes
Enclosed: Yes
Contiguous: Yes
Permitted: Yes
Wet space: Yes
Addition: No
Conversion: No

26 Floor 3 - Bedroom



Max Dimensions: 13'5" x 12'3"
Calculated Area: 164 sq. ft
Included: Yes

Heated: Yes
Finished: Yes
Enclosed: Yes
Contiguous: Yes
Permitted: Yes
Wet space: No
Addition: No
Conversion: No

6 Kashmir Drive, Millville, Salem, Rockingham County, New Hampshire, United States, 03079

27 Floor 3 - Laundry



Max Dimensions: 5'7" x 7'10"
Calculated Area: 44 sq. ft
Included: Yes

Heated: Yes
Finished: Yes
Enclosed: Yes
Contiguous: Yes
Permitted: Yes
Wet space: No
Addition: No
Conversion: No

28 Floor 3 - Primary Bedroom



Max Dimensions: 31'2" x 17'9"
Calculated Area: 357 sq. ft
Included: Yes

Heated: Yes
Finished: Yes
Enclosed: Yes
Contiguous: Yes
Permitted: Yes
Wet space: No
Addition: No
Conversion: No

29 Floor 3 - Bedroom



Max Dimensions: 13'2" x 12'7"
Calculated Area: 155 sq. ft
Included: Yes

Heated: Yes
Finished: Yes
Enclosed: Yes
Contiguous: Yes
Permitted: Yes
Wet space: No
Addition: No
Conversion: No

6 Kashmir Drive, Millville, Salem, Rockingham County, New Hampshire, United States, 03079

30 Floor 3 - Room



Max Dimensions: 12'1" x 11'2"
Calculated Area: 92 sq. ft
Included: Yes

Heated: Yes
Finished: Yes
Enclosed: Yes
Contiguous: Yes
Permitted: Yes
Wet space: No
Addition: No
Conversion: No

31 Floor 3 - W.I.C.



Max Dimensions: 6'11" x 11'5"
Calculated Area: 79 sq. ft
Included: Yes

Heated: Yes
Finished: Yes
Enclosed: Yes
Contiguous: Yes
Permitted: Yes
Wet space: No
Addition: No
Conversion: No