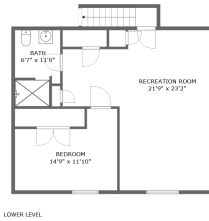
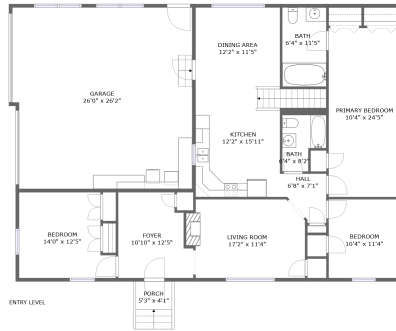


3315 Woodland Drive Southwest, Cave Spring, Roanoke, Roanoke County, Virginia, United




Property Summary


 **1** garages

 **4** bedrooms

 **3** bathrooms

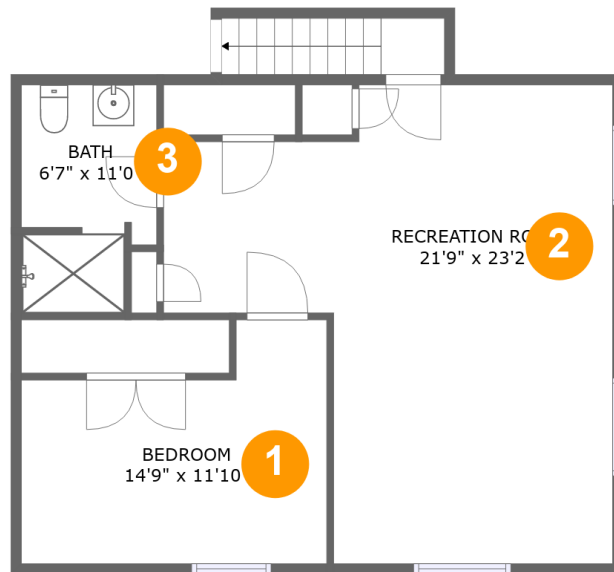
 **0** half baths

 **2** floors

 **1,757** Gross Living Area sqft

 **3,718** total sqft

**3315 Woodland Drive Southwest, Cave Spring,
Roanoke, Roanoke County, Virginia, United**



Room Dimensions

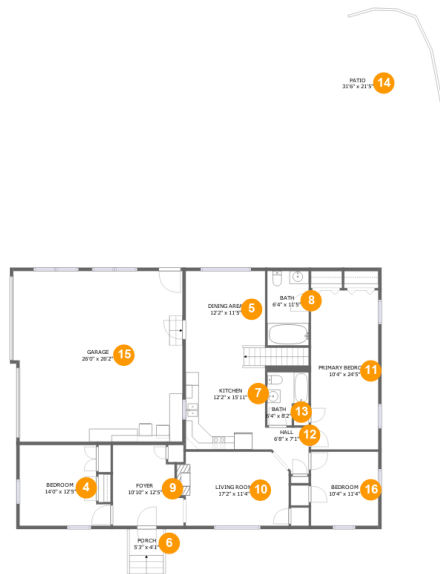
Floor 1

Total sqft: 754

Living area: 192

#	Room name	Dimensions	Area (sqft)	Counted as Living Area
1	Bedroom	14'9" x 11'10"	144 sq. ft	No
2	Recreation Room	21'9" x 23'2"	378 sq. ft	No
3	Bath	6'7" x 11'0"	66 sq. ft	Yes

3315 Woodland Drive Southwest, Cave Spring, Roanoke, Roanoke County, Virginia, United



Room Dimensions

Floor 2

Total sqft: 2964

Living area: 1565

#	Room name	Dimensions	Area (sqft)	Counted as Living Area
4	Bedroom	14'0" x 12'5"	153 sq. ft	Yes
5	Dining Area	12'2" x 11'5"	139 sq. ft	Yes
6	Porch	5'3" x 4'1"	24 sq. ft	No
7	Kitchen	12'2" x 15'11"	194 sq. ft	Yes
8	Bath	6'4" x 11'5"	73 sq. ft	Yes
9	Foyer	10'10" x 12'5"	119 sq. ft	Yes
10	Living Room	17'2" x 11'4"	182 sq. ft	Yes
11	Primary Bedroom	10'4" x 24'5"	252 sq. ft	Yes
12	Hall	6'8" x 7'1"	38 sq. ft	Yes
13	Bath	6'4" x 8'2"	43 sq. ft	Yes
14	Patio	31'6" x 21'5"	680 sq. ft	No

Scan captured on Thu, 24 Oct 2024 19:53:15 GMT

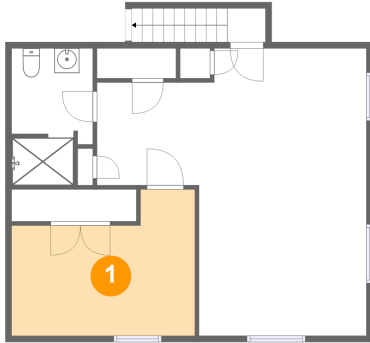
Information is calculated by CubiCasa technology; deemed highly reliable but not guaranteed.

**3315 Woodland Drive Southwest, Cave Spring,
Roanoke, Roanoke County, Virginia, United**

#	Room name	Dimensions	Area (sqft)	Counted as Living Area
15	Garage	26'0" x 26'2"	668 sq. ft	No
16	Bedroom	10'4" x 11'4"	117 sq. ft	Yes

3315 Woodland Drive Southwest, Cave Spring, Roanoke, Roanoke County, Virginia, United

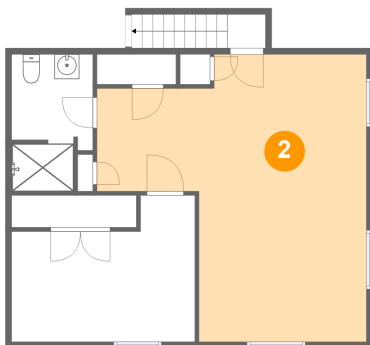
1 Floor 1 - Bedroom



Dimensions: 14'9" x 11'10"
Area: 144 sq. ft
Counted as Living Area: No

Heated: Yes
Finished: Yes
Enclosed: Yes
Contiguous: Yes
Permitted: Yes
Wet Space: No
Addition: No
Conversion: No

2 Floor 1 - Recreation Room

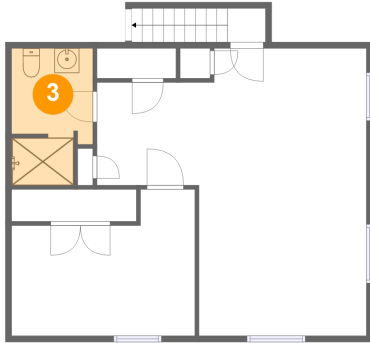


Dimensions: 21'9" x 23'2"
Area: 378 sq. ft
Counted as Living Area: No

Heated: Yes
Finished: Yes
Enclosed: Yes
Contiguous: Yes
Permitted: Yes
Wet Space: No
Addition: No
Conversion: No

3315 Woodland Drive Southwest, Cave Spring, Roanoke, Roanoke County, Virginia, United

3 Floor 1 - Bath



Dimensions: 6'7" x 11'0"
Area: 66 sq. ft
Counted as Living Area:
Yes

Heated: Yes
Finished: Yes
Enclosed: Yes
Contiguous:
Yes
Permitted: Yes
Wet Space: Yes
Addition: No
Conversion: No

4 Floor 2 - Bedroom



Dimensions: 14'0" x 12'5"
Area: 153 sq. ft
Counted as Living Area:
Yes

Heated: Yes
Finished: Yes
Enclosed: Yes
Contiguous:
Yes
Permitted: Yes
Wet Space: No
Addition: No
Conversion: No

5 Floor 2 - Dining Area



Dimensions: 12'2" x 11'5"
Area: 139 sq. ft
Counted as Living Area:
Yes

Heated: Yes
Finished: Yes
Enclosed: Yes
Contiguous:
Yes
Permitted: Yes
Wet Space: No
Addition: No
Conversion: No

3315 Woodland Drive Southwest, Cave Spring, Roanoke, Roanoke County, Virginia, United

6 Floor 2 - Porch



Dimensions: 5'3" x 4'1"
Area: 24 sq. ft
Counted as Living Area: No

Heated: No
Finished: Yes
Enclosed: No
Contiguous: Yes
Permitted: Yes
Wet Space: No
Addition: No
Conversion: No

7 Floor 2 - Kitchen



Dimensions: 12'2" x 15'11"
Area: 194 sq. ft
Counted as Living Area:
Yes

Heated: Yes
Finished: Yes
Enclosed: Yes
Contiguous:
Yes
Permitted: Yes
Wet Space: No
Addition: No
Conversion: No

8 Floor 2 - Bath



Dimensions: 6'4" x 11'5"
Area: 73 sq. ft
Counted as Living Area:
Yes

Heated: Yes
Finished: Yes
Enclosed: Yes
Contiguous:
Yes
Permitted: Yes
Wet Space: Yes
Addition: No
Conversion: No

3315 Woodland Drive Southwest, Cave Spring, Roanoke, Roanoke County, Virginia, United

9 Floor 2 - Foyer



Dimensions: 10'10" x 12'5"
Area: 119 sq. ft
Counted as Living Area:
Yes

Heated: Yes
Finished: Yes
Enclosed: Yes
Contiguous:
Yes
Permitted: Yes
Wet Space: No
Addition: No
Conversion: No

10 Floor 2 - Living Room



Dimensions: 17'2" x 11'4"
Area: 182 sq. ft
Counted as Living Area:
Yes

Heated: Yes
Finished: Yes
Enclosed: Yes
Contiguous:
Yes
Permitted: Yes
Wet Space: No
Addition: No
Conversion: No

11 Floor 2 - Primary Bedroom



Dimensions: 10'4" x 24'5"
Area: 252 sq. ft
Counted as Living Area:
Yes

Heated: Yes
Finished: Yes
Enclosed: Yes
Contiguous:
Yes
Permitted: Yes
Wet Space: No
Addition: No
Conversion: No

3315 Woodland Drive Southwest, Cave Spring, Roanoke, Roanoke County, Virginia, United

12 Floor 2 - Hall



Dimensions: 6'8" x 7'1"
Area: 38 sq. ft
Counted as Living Area:
Yes

Heated: Yes
Finished: Yes
Enclosed: Yes
Contiguous:
Yes
Permitted: Yes
Wet Space: No
Addition: No
Conversion: No

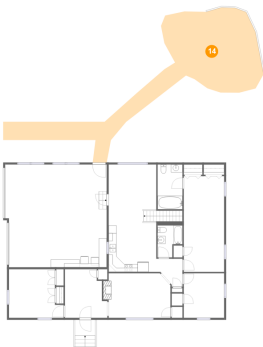
13 Floor 2 - Bath



Dimensions: 6'4" x 8'2"
Area: 43 sq. ft
Counted as Living Area:
Yes

Heated: Yes
Finished: Yes
Enclosed: Yes
Contiguous:
Yes
Permitted: Yes
Wet Space: Yes
Addition: No
Conversion: No

14 Floor 2 - Patio

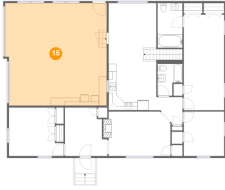


Dimensions: 31'6" x 21'5"
Area: 680 sq. ft
Counted as Living Area: No

Heated: No
Finished: Yes
Enclosed: No
Contiguous: Yes
Permitted: Yes
Wet Space: No
Addition: No
Conversion: No

3315 Woodland Drive Southwest, Cave Spring, Roanoke, Roanoke County, Virginia, United

15 Floor 2 - Garage



Dimensions: 26'0" x 26'2"
Area: 668 sq. ft
Counted as Living Area: No

Heated: No
Finished: No
Enclosed: Yes
Contiguous: Yes
Permitted: Yes
Wet Space: No
Addition: No
Conversion: No

16 Floor 2 - Bedroom



Dimensions: 10'4" x 11'4"
Area: 117 sq. ft
Counted as Living Area:
Yes

Heated: Yes
Finished: Yes
Enclosed: Yes
Contiguous:
Yes
Permitted: Yes
Wet Space: No
Addition: No
Conversion: No