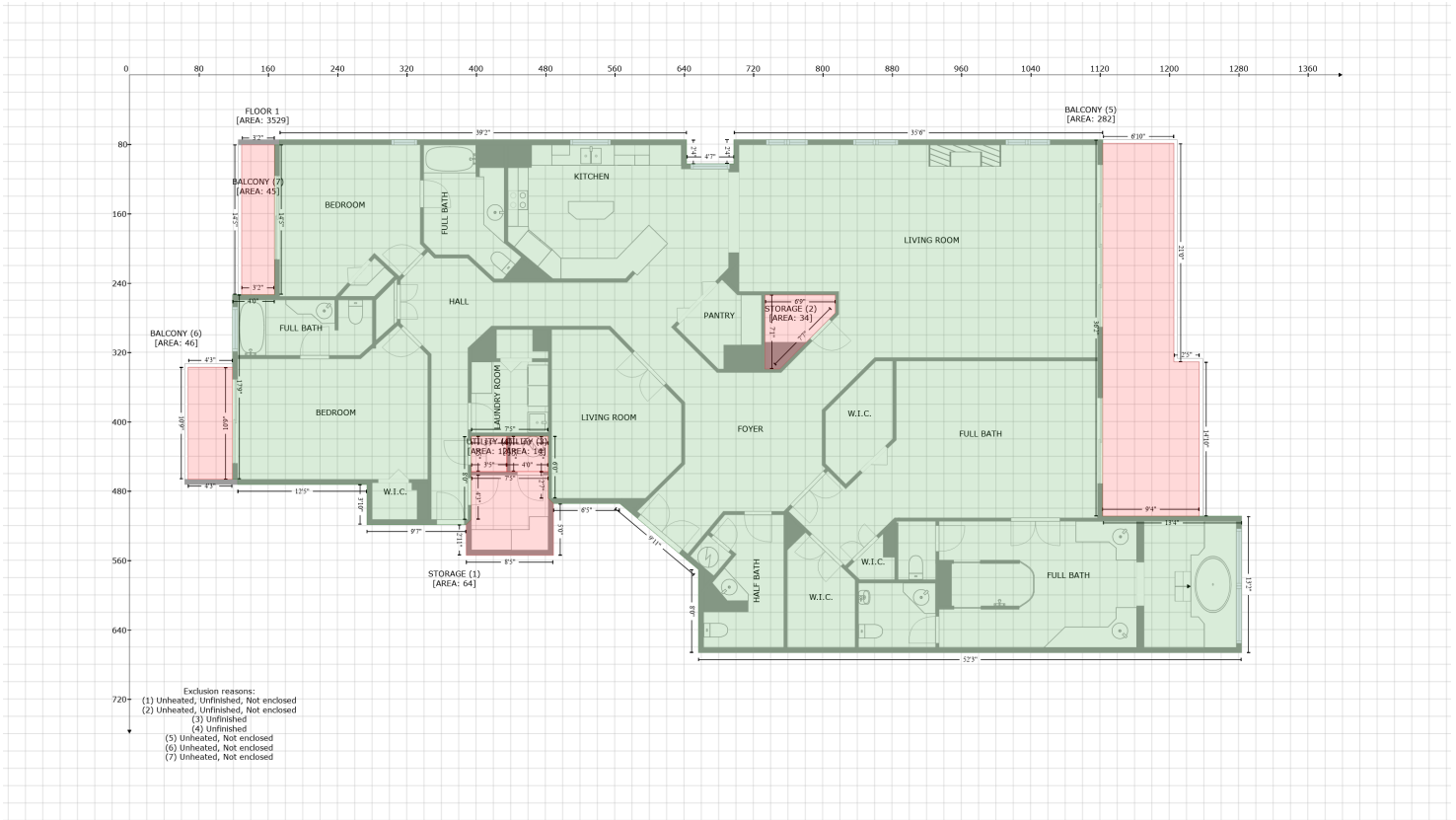


# 20110 Gulf Boulevard, Indian Shores, Pinellas County, Florida, United States, 33785, 808

Gross Living Area: 3529 sq. ft



Space	Area (sq. ft)	Calculation
FLOOR 1 (Living area)	3529	$-\left((643 + 643) * (74.8 - 102.6) + (643 + 697.5) * (102.6 - 102.6) + (697.5 + 697.5) * (102.6 - 74.8) + (697.5 + 1123.4) * (74.8 - 74.8) + (1123.4 + 1123.5) * (74.8 - 102.6) + (1123.5 + 1123.1) * (102.6 - 509) + (1123.1 + 1283.6) * (509 - 509) + (1283.6 + 1283.6) * (509 - 666.7) + (1283.6 + 656.8) * (666.7 - 666.7) + (656.8 + 656.8) * (666.7 - 570.9) + (656.8 + 565.8) * (570.9 - 494.6) + (565.8 + 489.3) * (494.6 - 494.6) + (489.3 + 483.3) * (494.6 - 488.6) + (483.3 + 483.3) * (488.6 - 416.9) + (483.3 + 394.6) * (416.9 - 416.9) + (394.6 + 394.6) * (416.9 - 513) + (394.6 + 394.7) * (513 - 513) + (394.7 + 388.7) * (513 - 519) + (388.7 + 388.7) * (519 - 519) + (388.7 + 274.1) * (519 - 519) + (274.1 + 274.1) * (519 - 472.6) + (274.1 + 124.9) * (472.6 - 472.6) + (124.9 + 124.9) * (472.6 - 466.6) + (124.9 + 118.9) * (466.6 - 466.6) + (118.9 + 118.9) * (466.6 - 253.6) + (118.9 + 167.3) * (253.6 - 253.6) + (167.3 + 167.3) * (253.6 - 80.8) + (167.3 + 173.3) * (80.8 - 80.8) + (173.3 + 173.3) * (80.8 - 74.8) + (173.3 + 643) * (74.8 - 74.8) * 0.5 * 0.00694 - (814.6 + 733.6) * (254 - 254) + (733.6 + 733.6) * (254 - 339.4) + (733.6 + 750.5) * (339.4 - 339.4) + (750.5 + 814.6) * (339.4 - 274.7) + (814.6 + 814.6) * (274.7 - 254) * 0.5 * 0.00694$
STORAGE (Non-living area)	64	$-\left((483.3 + 483.3) * (457.7 - 488.6) + (483.3 + 489.3) * (488.6 - 494.6) + (489.3 + 489.3) * (494.6 - 554.3) + (489.3 + 388.7) * (554.3 - 554.3) + (388.7 + 388.7) * (554.3 - 519) + (388.7 + 394.7) * (519 - 513) + (394.7 + 394.6) * (513 - 461.7) + (394.6 + 394.6) * (461.7 - 457.7) + (394.6 + 483.3) * (457.7 - 457.7) * 0.5 * 0.00694$
STORAGE (Non-living area)	34	$-\left((814.6 + 814.6) * (254 - 274.7) + (814.6 + 750.5) * (274.7 - 339.4) + (750.5 + 733.6) * (339.4 - 339.4) + (733.6 + 733.6) * (339.4 - 254) + (733.6 + 814.6) * (254 - 254) * 0.5 * 0.00694$
UTILITY (Non-living area)	14	$-\left((483.3 + 483.3) * (416.9 - 457.7) + (483.3 + 435.5) * (457.7 - 457.7) + (435.5 + 435.5) * (457.7 - 416.9) + (435.5 + 483.3) * (416.9 - 416.9) * 0.5 * 0.00694$
UTILITY (Non-living area)	12	$-\left((435.5 + 435.5) * (416.9 - 457.7) + (435.5 + 394.6) * (457.7 - 457.7) + (394.6 + 394.6) * (457.7 - 416.9) + (394.6 + 435.5) * (416.9 - 416.9) * 0.5 * 0.00694$
BALCONY (Non-living area)	282	$-\left((1205.4 + 1205.4) * (78.9 - 331.2) + (1205.4 + 1234.8) * (331.2 - 331.2) + (1234.8 + 1234.8) * (331.2 - 509) + (1234.8 + 1123.1) * (509 - 509) + (1123.1 + 1123.4) * (509 - 78.9) + (1123.4 +$

# 20110 Gulf Boulevard, Indian Shores, Pinellas County, Florida, United States, 33785, 808

Gross Living Area: 3529 sq. ft

Space	Area (sq. ft)	Calculation <small>Coordinate Polygon Area Algorithm using inches</small>
BALCONY (Non-living area)	46	$1205.4 * (78.9 - 78.9) * 0.5 * 0.00694$ $-((118.9 + 118.9) * (337.3 - 466.6) + (118.9 + 67.7) * (466.6 - 466.6) + (67.7 + 67.7) * (466.6 - 337.3) + (67.7 + 118.9) * (337.3 - 337.3)) * 0.5 * 0.00694$
BALCONY (Non-living area)	45	$-((129.5 + 167.3) * (80.8 - 80.8) + (167.3 + 167.3) * (80.8 - 253.6) + (167.3 + 129.5) * (253.6 - 253.6) + (129.5 + 129.5) * (253.6 - 80.8)) * 0.5 * 0.00694$