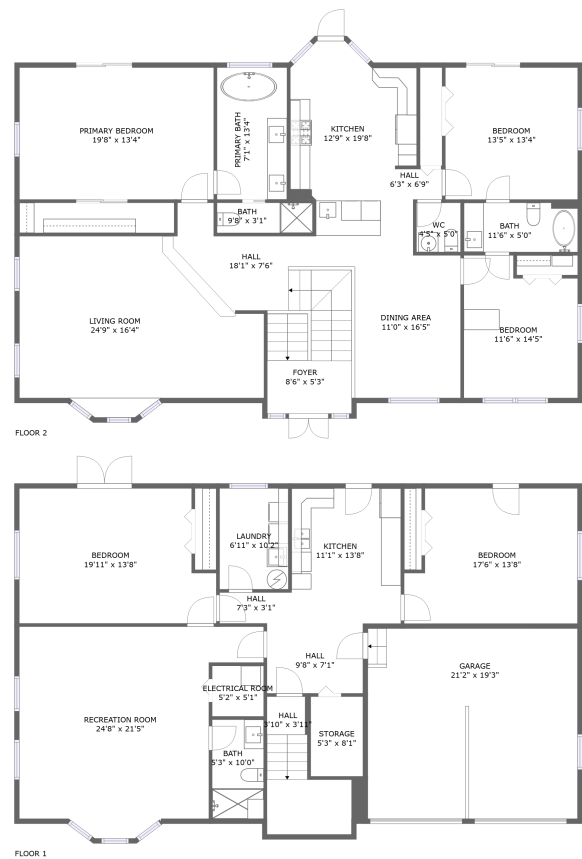


Home report

316 Hillpoint Drive, Ozona Village, Palm Harbor, Pinellas County,  
Florida, United States, 34683



**Total Area: 3349 sq. ft**  
Floor 1: 1418 sq. ft, Floor 2: 1931 sq. ft  
Excluded: Garage 408 sq. ft, Storage 43 sq. ft, Room Electrical 27 sq. ft, Walls: 204 sq. ft

Property summary

 **2** Floors

 **5** Bedrooms

 **3** Bathrooms

Home report

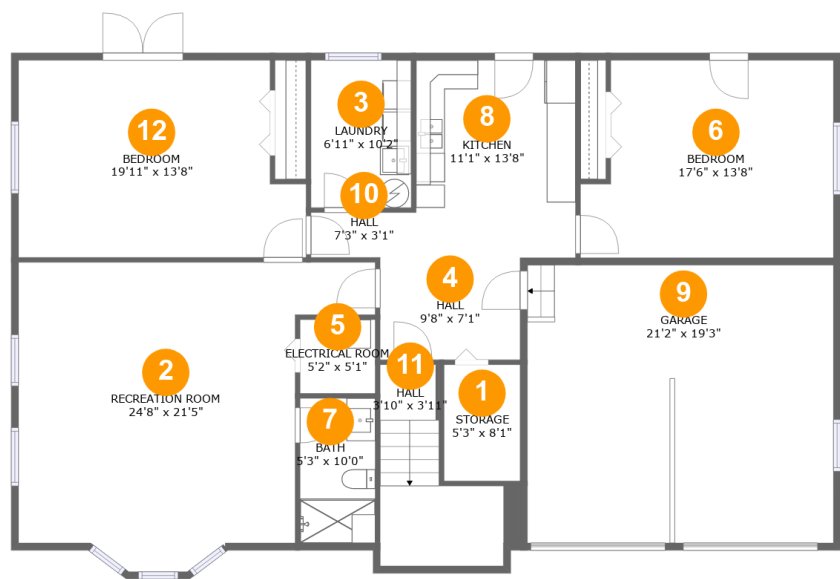
316 Hillpoint Drive, Ozona Village, Palm Harbor, Pinellas County,  
Florida, United States, 34683

 **1**  
Half baths

 **1**  
Garages

Home report

316 Hillpoint Drive, Ozona Village, Palm Harbor, Pinellas County,  
Florida, United States, 34683



Room dimensions

Floor 1

Total:1418sqft    Excluded: 478sqft

#		Max Dimensions	sqft	Included
1	Storage	5'3" x 8'1"	43 sq. ft	No
2	Recreation Room	24'8" x 21'5"	406 sq. ft	Yes
3	Laundry	6'11" x 10'2"	71 sq. ft	Yes
4	Hall	9'8" x 7'1"	68 sq. ft	Yes
5	Electrical Room	5'2" x 5'1"	27 sq. ft	No
6	Bedroom	17'6" x 13'8"	222 sq. ft	Yes
7	Bath	5'3" x 10'0"	52 sq. ft	Yes
8	Kitchen	11'1" x 13'8"	151 sq. ft	Yes
9	Garage	21'2" x 19'3"	408 sq. ft	No
10	Hall	7'3" x 3'1"	23 sq. ft	Yes
11	Hall	3'10" x 3'11"	86 sq. ft	Yes

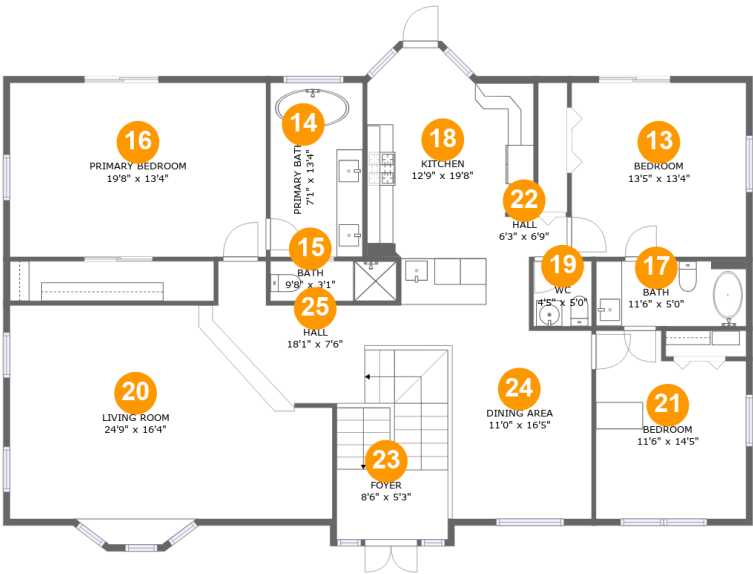
Home report

316 Hillpoint Drive, Ozona Village, Palm Harbor, Pinellas County, Florida, United States, 34683

#		Max Dimensions	sqft	Included
12	Bedroom	19'11" x 13'8"	251 sq. ft	Yes

Home report

316 Hillpoint Drive, Ozona Village, Palm Harbor, Pinellas County, Florida, United States, 34683



Room dimensions

Floor 2 Total:1931sqft   Excluded: 0sqft

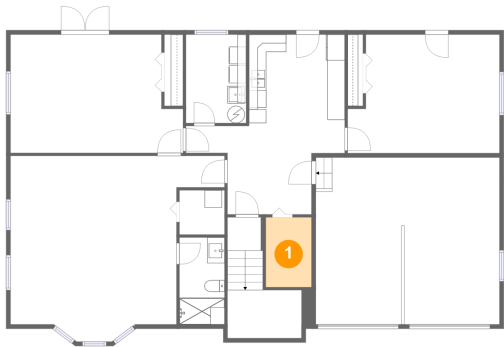
#		Max Dimensions	sqft	Included
13	Bedroom	13'5" x 13'4"	179 sq. ft	Yes
14	Primary Bath	7'1" x 13'4"	95 sq. ft	Yes
15	Bath	9'8" x 3'1"	29 sq. ft	Yes
16	Primary Bedroom	19'8" x 13'4"	262 sq. ft	Yes
17	Bath	11'6" x 5'0"	57 sq. ft	Yes
18	Kitchen	12'9" x 19'8"	197 sq. ft	Yes
19	WC	4'5" x 5'0"	22 sq. ft	Yes
20	Living Room	24'9" x 16'4"	367 sq. ft	Yes
21	Bedroom	11'6" x 14'5"	151 sq. ft	Yes
22	Hall	6'3" x 6'9"	31 sq. ft	Yes
23	Foyer	8'6" x 5'3"	117 sq. ft	Yes

Home report

316 Hillpoint Drive, Ozona Village, Palm Harbor, Pinellas County,  
Florida, United States, 34683

#		Max Dimensions	sqft	Included
24	Dining Area	11'0" x 16'5"	172 sq. ft	Yes
25	Hall	18'1" x 7'6"	101 sq. ft	Yes

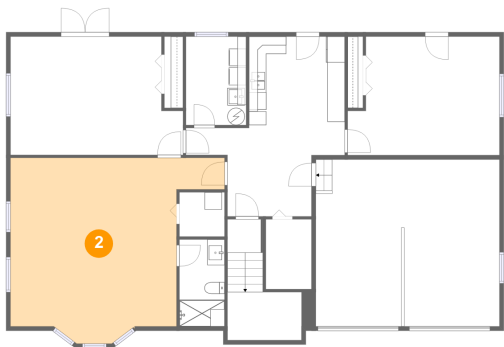
1 Floor 1 - Storage



Max Dimensions: 5'3" x 8'1"  
Calculated Area: 43 sq. ft  
Included: No

Heated: No  
Finished: No  
Enclosed: No  
Contiguous: Yes  
Permitted: Yes  
Wet space: No  
Addition: No  
Conversion: No

2 Floor 1 - Recreation Room



Max Dimensions: 24'8" x 21'5"  
Calculated Area: 406 sq. ft  
Included: Yes

Heated: Yes  
Finished: Yes  
Enclosed: Yes  
Contiguous: Yes  
Permitted: Yes  
Wet space: No  
Addition: No  
Conversion: No

## Home report

316 Hillpoint Drive, Ozona Village, Palm Harbor, Pinellas County,  
Florida, United States, 34683

### 3 Floor 1 - Laundry



Max Dimensions: 6'11" x 10'2"  
Calculated Area: 71 sq. ft  
Included: Yes

Heated: Yes  
Finished: Yes  
Enclosed: Yes  
Contiguous: Yes  
Permitted: Yes  
Wet space: No  
Addition: No  
Conversion: No

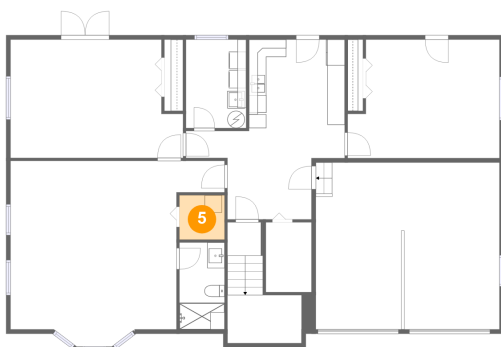
### 4 Floor 1 - Hall



Max Dimensions: 9'8" x 7'1"  
Calculated Area: 68 sq. ft  
Included: Yes

Heated: Yes  
Finished: Yes  
Enclosed: Yes  
Contiguous: Yes  
Permitted: Yes  
Wet space: No  
Addition: No  
Conversion: No

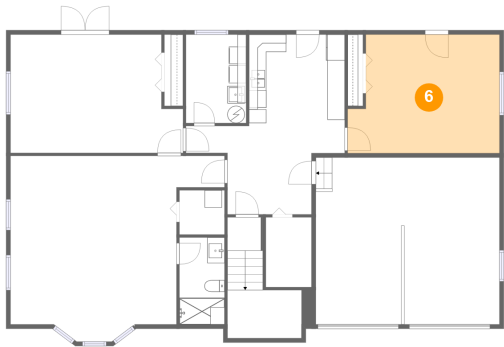
### 5 Floor 1 - Electrical Room



Max Dimensions: 5'2" x 5'1"  
Calculated Area: 27 sq. ft  
Included: No

Heated: No  
Finished: No  
Enclosed: Yes  
Contiguous: Yes  
Permitted: Yes  
Wet space: No  
Addition: No  
Conversion: No

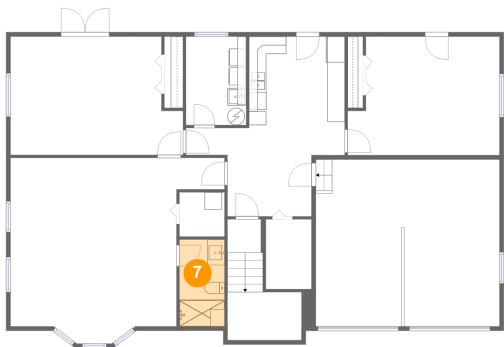
6 Floor 1 - Bedroom



Max Dimensions: 17'6" x 13'8"  
Calculated Area: 222 sq. ft  
Included: Yes

Heated: Yes  
Finished: Yes  
Enclosed: Yes  
Contiguous: Yes  
Permitted: Yes  
Wet space: No  
Addition: No  
Conversion: No

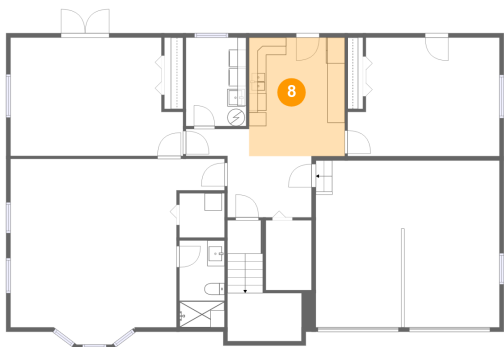
7 Floor 1 - Bath



Max Dimensions: 5'3" x 10'0"  
Calculated Area: 52 sq. ft  
Included: Yes

Heated: Yes  
Finished: Yes  
Enclosed: Yes  
Contiguous: Yes  
Permitted: Yes  
Wet space: Yes  
Addition: No  
Conversion: No

8 Floor 1 - Kitchen

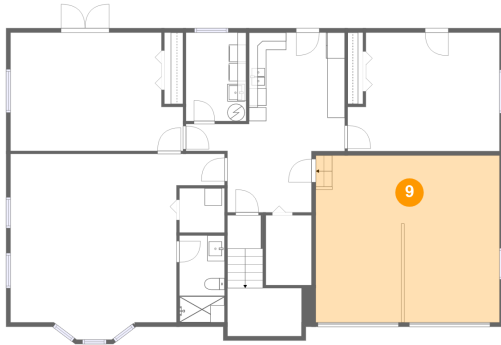


Max Dimensions: 11'1" x 13'8"  
Calculated Area: 151 sq. ft  
Included: Yes

Heated: Yes  
Finished: Yes  
Enclosed: Yes  
Contiguous: Yes  
Permitted: Yes  
Wet space: No  
Addition: No  
Conversion: No

316 Hillpoint Drive, Ozona Village, Palm Harbor, Pinellas County,  
Florida, United States, 34683

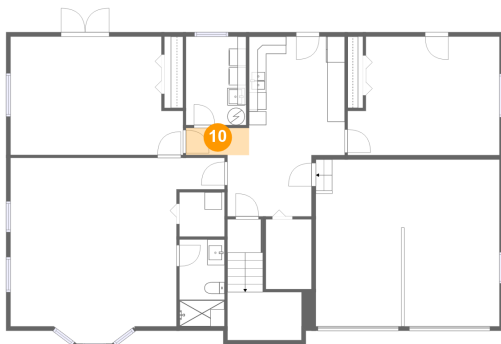
## 9 Floor 1 - Garage



Max Dimensions: 21'2" x 19'3"  
Calculated Area: 408 sq. ft  
Included: No

Heated: No  
Finished: No  
Enclosed: Yes  
Contiguous: Yes  
Permitted: Yes  
Wet space: No  
Addition: No  
Conversion: No

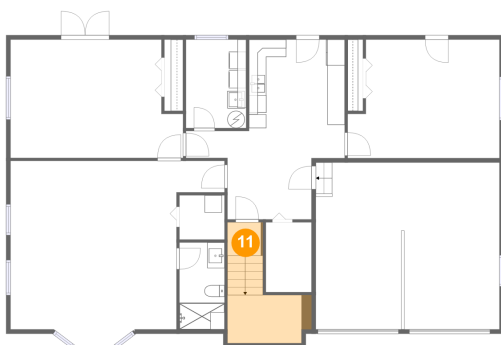
## 10 Floor 1 - Hall



Max Dimensions: 7'3" x 3'1"  
Calculated Area: 23 sq. ft  
Included: Yes

Heated: Yes  
Finished: Yes  
Enclosed: Yes  
Contiguous: Yes  
Permitted: Yes  
Wet space: No  
Addition: No  
Conversion: No

## 11 Floor 1 - Hall

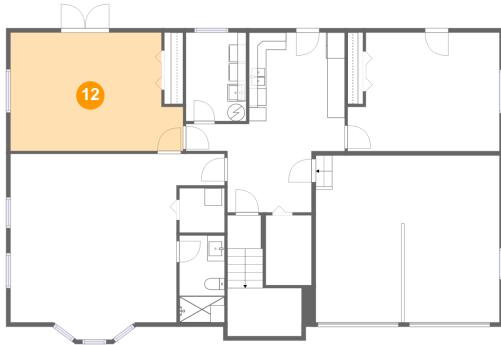


Max Dimensions: 3'10" x 3'11"  
Calculated Area: 86 sq. ft  
Included: Yes

Heated: Yes  
Finished: Yes  
Enclosed: Yes  
Contiguous: Yes  
Permitted: Yes  
Wet space: No  
Addition: No  
Conversion: No

316 Hillpoint Drive, Ozona Village, Palm Harbor, Pinellas County,  
Florida, United States, 34683

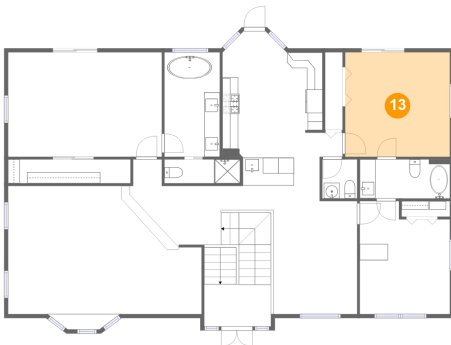
## 12 Floor 1 - Bedroom



Max Dimensions: 19'11" x 13'8"  
Calculated Area: 251 sq. ft  
Included: Yes

Heated: Yes  
Finished: Yes  
Enclosed: Yes  
Contiguous: Yes  
Permitted: Yes  
Wet space: No  
Addition: No  
Conversion: No

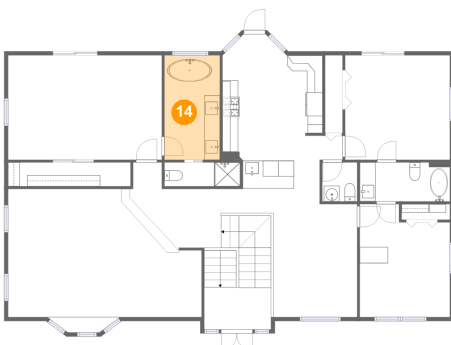
## 13 Floor 2 - Bedroom



Max Dimensions: 13'5" x 13'4"  
Calculated Area: 179 sq. ft  
Included: Yes

Heated: Yes  
Finished: Yes  
Enclosed: Yes  
Contiguous: Yes  
Permitted: Yes  
Wet space: No  
Addition: No  
Conversion: No

## 14 Floor 2 - Primary Bath

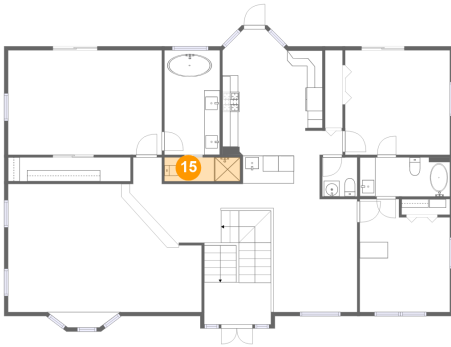


Max Dimensions: 7'1" x 13'4"  
Calculated Area: 95 sq. ft  
Included: Yes

Heated: Yes  
Finished: Yes  
Enclosed: Yes  
Contiguous: Yes  
Permitted: Yes  
Wet space: Yes  
Addition: No  
Conversion: No

316 Hillpoint Drive, Ozona Village, Palm Harbor, Pinellas County,  
Florida, United States, 34683

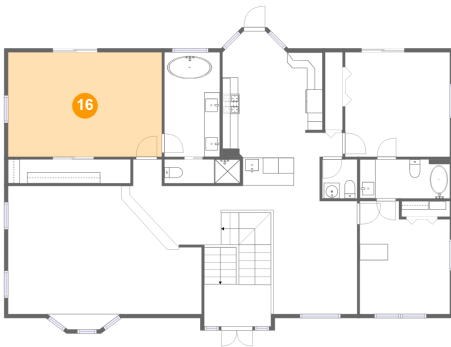
## 15 Floor 2 - Bath



Max Dimensions: 9'8" x 3'1"  
Calculated Area: 29 sq. ft  
Included: Yes

Heated: Yes  
Finished: Yes  
Enclosed: Yes  
Contiguous: Yes  
Permitted: Yes  
Wet space: Yes  
Addition: No  
Conversion: No

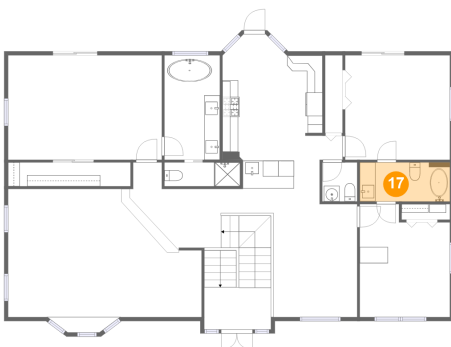
## 16 Floor 2 - Primary Bedroom



Max Dimensions: 19'8" x 13'4"  
Calculated Area: 262 sq. ft  
Included: Yes

Heated: Yes  
Finished: Yes  
Enclosed: Yes  
Contiguous: Yes  
Permitted: Yes  
Wet space: No  
Addition: No  
Conversion: No

## 17 Floor 2 - Bath

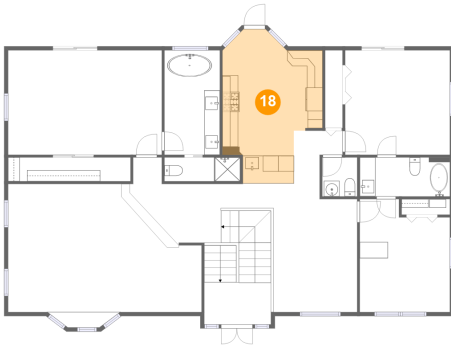


Max Dimensions: 11'6" x 5'0"  
Calculated Area: 57 sq. ft  
Included: Yes

Heated: Yes  
Finished: Yes  
Enclosed: Yes  
Contiguous: Yes  
Permitted: Yes  
Wet space: Yes  
Addition: No  
Conversion: No

316 Hillpoint Drive, Ozona Village, Palm Harbor, Pinellas County,  
Florida, United States, 34683

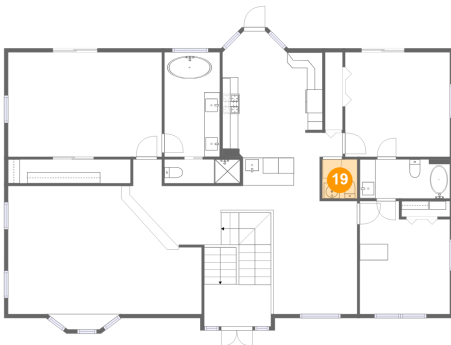
## 18 Floor 2 - Kitchen



Max Dimensions: 12'9" x 19'8"  
Calculated Area: 197 sq. ft  
Included: Yes

Heated: Yes  
Finished: Yes  
Enclosed: Yes  
Contiguous: Yes  
Permitted: Yes  
Wet space: No  
Addition: No  
Conversion: No

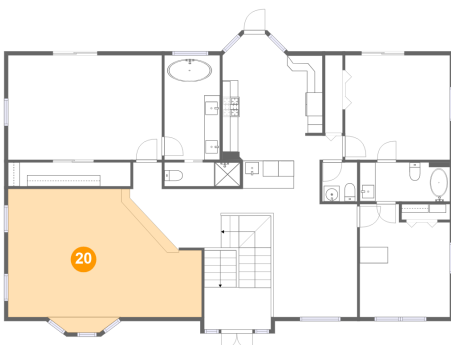
## 19 Floor 2 - WC



Max Dimensions: 4'5" x 5'0"  
Calculated Area: 22 sq. ft  
Included: Yes

Heated: Yes  
Finished: Yes  
Enclosed: Yes  
Contiguous: Yes  
Permitted: Yes  
Wet space: Yes  
Addition: No  
Conversion: No

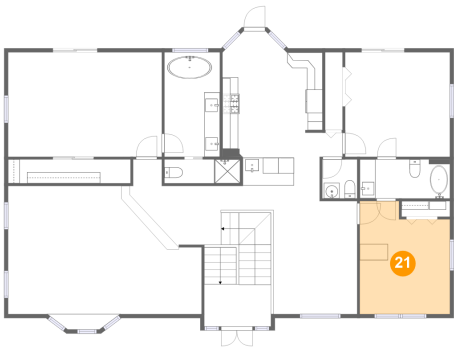
## 20 Floor 2 - Living Room



Max Dimensions: 24'9" x 16'4"  
Calculated Area: 367 sq. ft  
Included: Yes

Heated: Yes  
Finished: Yes  
Enclosed: Yes  
Contiguous: Yes  
Permitted: Yes  
Wet space: No  
Addition: No  
Conversion: No

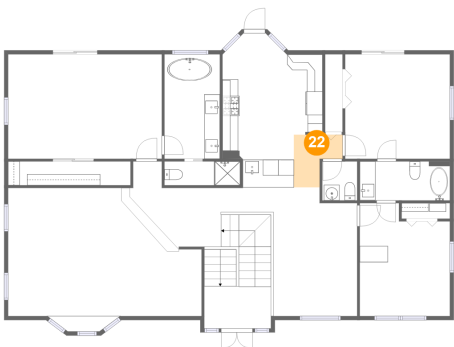
21 Floor 2 - Bedroom



Max Dimensions: 11'6" x 14'5"  
Calculated Area: 151 sq. ft  
Included: Yes

Heated: Yes  
Finished: Yes  
Enclosed: Yes  
Contiguous: Yes  
Permitted: Yes  
Wet space: No  
Addition: No  
Conversion: No

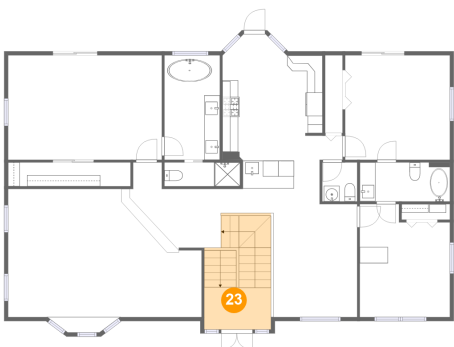
22 Floor 2 - Hall



Max Dimensions: 6'3" x 6'9"  
Calculated Area: 31 sq. ft  
Included: Yes

Heated: Yes  
Finished: Yes  
Enclosed: Yes  
Contiguous: Yes  
Permitted: Yes  
Wet space: No  
Addition: No  
Conversion: No

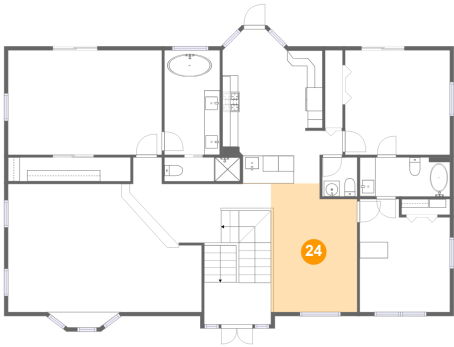
23 Floor 2 - Foyer



Max Dimensions: 8'6" x 5'3"  
Calculated Area: 117 sq. ft  
Included: Yes

Heated: Yes  
Finished: Yes  
Enclosed: Yes  
Contiguous: Yes  
Permitted: Yes  
Wet space: No  
Addition: No  
Conversion: No

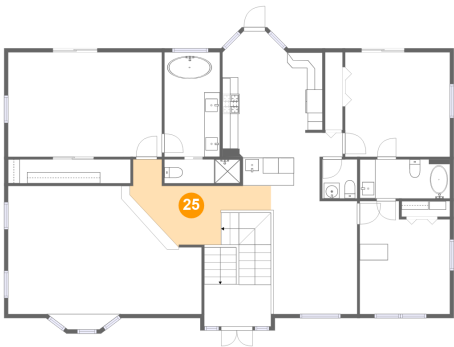
24 Floor 2 - Dining Area



Max Dimensions: 11'0" x 16'5"  
Calculated Area: 172 sq. ft  
Included: Yes

Heated: Yes  
Finished: Yes  
Enclosed: Yes  
Contiguous: Yes  
Permitted: Yes  
Wet space: No  
Addition: No  
Conversion: No

25 Floor 2 - Hall



Max Dimensions: 18'1" x 7'6"  
Calculated Area: 101 sq. ft  
Included: Yes

Heated: Yes  
Finished: Yes  
Enclosed: Yes  
Contiguous: Yes  
Permitted: Yes  
Wet space: No  
Addition: No  
Conversion: No