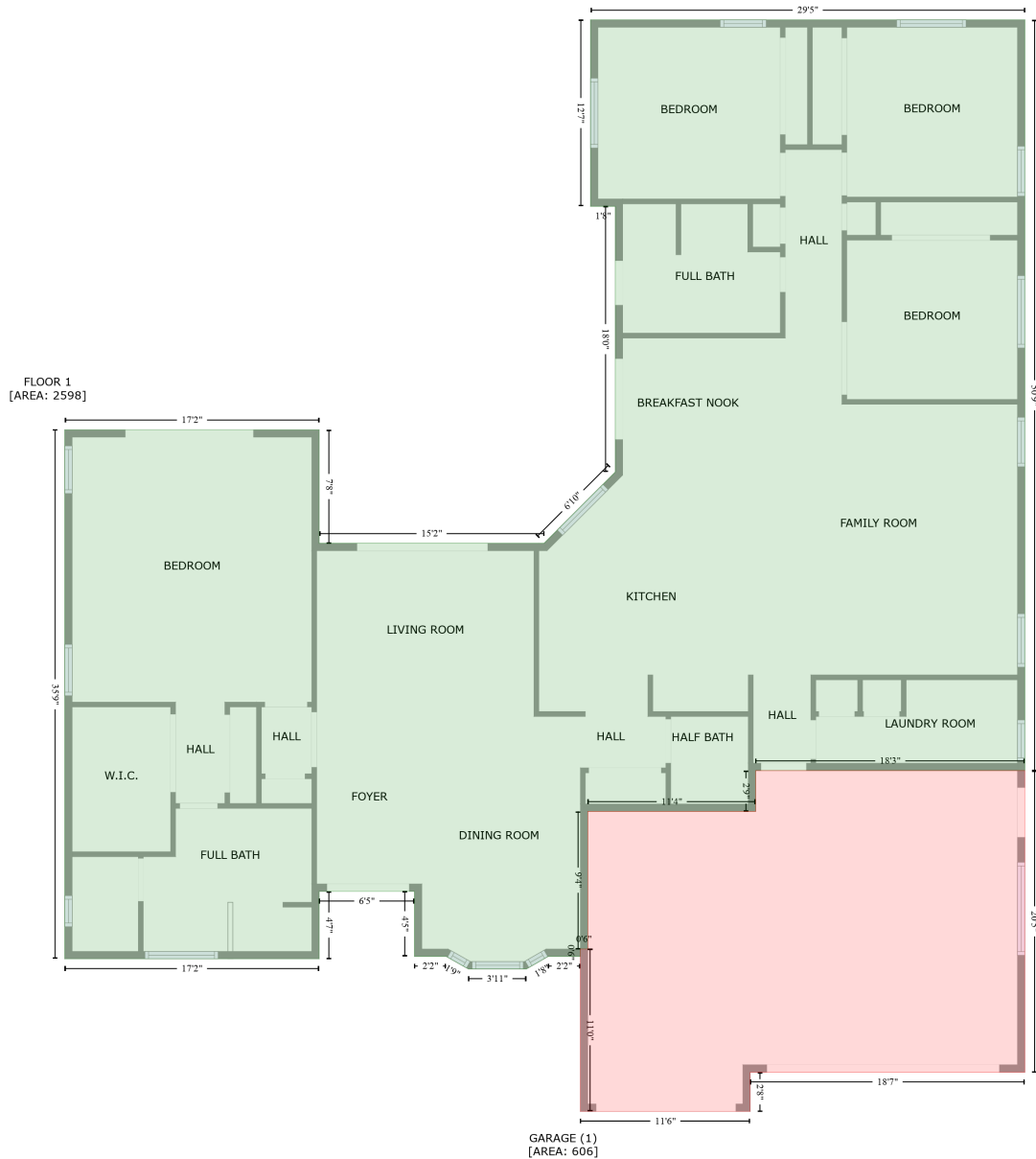


13174 Spring Lake Drive, Cooper City, Broward County, Florida, United States, 33330

Gross Living Area: 2598 sq. ft



Space	Area (sq. ft)	Calculation <small>Coordinate Polygon Area Algorithm using inches</small>
FLOOR 1 (Living area)	2598	$ \begin{aligned} & -((779.3 + 779.3) * (0 - 609.2) + (779.3 + 560.8) * (609.2 - 609.2) + (560.8 + 560.8) * (609.2 - \\ & 642.3) + (560.8 + 424.5) * (642.3 - 642.3) + (424.5 + 424.5) * (642.3 - 754) + (424.5 + 418.5) * \\ & (754 - 754) + (418.5 + 418.5) * (754 - 760) + (418.5 + 392.4) * (760 - 760) + (392.4 + 374.7) * \\ & (760 - 770.3) + (374.7 + 327.6) * (770.3 - 770.3) + (327.6 + 309.5) * (770.3 - 760) + (309.5 + \\ & 283.9) * (760 - 760) + (283.9 + 283.9) * (760 - 707.3) + (283.9 + 206.5) * (707.3 - 707.3) + (206.5 + \\ & 206.5) * (707.3 - 762) + (206.5 + 0) * (762 - 762) + (0 + 0) * (762 - 332.7) + (0 + 206.5) * (332.7 \\ & - 332.7) + (206.5 + 206.5) * (332.7 - 424.8) + (206.5 + 389) * (424.8 - 424.8) + (389 + 446.9) * \end{aligned} $

13174 Spring Lake Drive, Cooper City, Broward County, Florida, United States, 33330

Gross Living Area: 2598 sq. ft

Space	Area (sq. ft)	Calculation <small>Coordinate Polygon Area Algorithm using inches</small>
GARAGE (Non-living area)	606	$(424.8 - 366.9) + (446.9 + 446.9) * (366.9 - 151.3) + (446.9 + 426.8) * (151.3 - 151.3) + (426.8 + 426.8) * (151.3 - 0) + (426.8 + 779.3) * (0 - 0) * 0.5 * 0.00694$ $-((779.3 + 779.3) * (609.2 - 854) + (779.3 + 556.4) * (854 - 854) + (556.4 + 556.4) * (854 - 885.8) + (556.4 + 418.5) * (885.8 - 885.8) + (418.5 + 418.5) * (885.8 - 754) + (418.5 + 424.5) * (754 - 754) + (424.5 + 424.5) * (754 - 642.3) + (424.5 + 560.8) * (642.3 - 642.3) + (560.8 + 560.8) * (642.3 - 609.2) + (560.8 + 779.3) * (609.2 - 609.2)) * 0.5 * 0.00694$