

## Home report

85 North Fork Road, Centennial, Albany County, Wyoming,  
United States, 82055



**Total Area: 2952 sq. ft**

Floor 1: 479 sq. ft, Floor 2: 2473 sq. ft

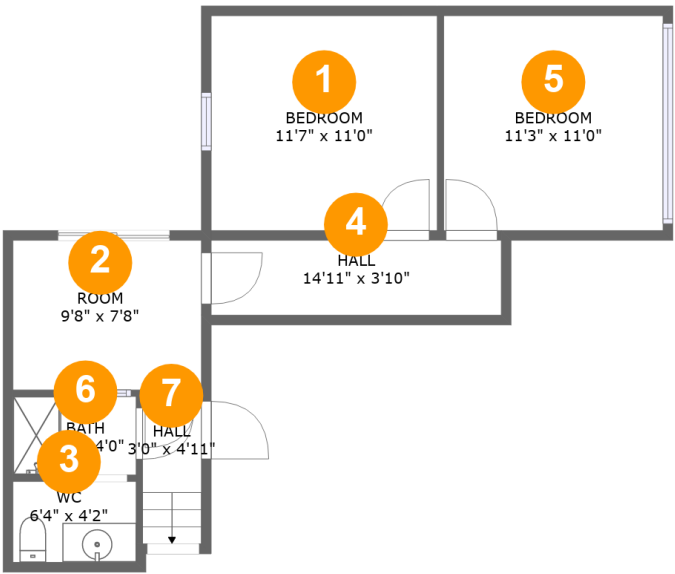
Excluded: Screened porch 203 sq. ft, Embedded window 12 sq. ft, Fireplace 14 sq. ft,  
Walls: 219 sq. ft

## Property summary



Home report

85 North Fork Road, Centennial, Albany County, Wyoming,  
United States, 82055



Room dimensions

Floor 1 Total:479sqft Excluded: 0sqft

#		Max Dimensions	sqft	Included
1	Bedroom	11'7" x 11'0"	128 sq. ft	Yes
2	Room	9'8" x 7'8"	74 sq. ft	Yes
3	WC	6'4" x 4'2"	26 sq. ft	Yes
4	Hall	14'11" x 3'10"	57 sq. ft	Yes
5	Bedroom	11'3" x 11'0"	124 sq. ft	Yes
6	Bath	6'4" x 4'0"	25 sq. ft	Yes
7	Hall	3'0" x 4'11"	23 sq. ft	Yes

Home report

85 North Fork Road, Centennial, Albany County, Wyoming,  
United States, 82055



Room dimensions

Floor 2 Total:2473sqft Excluded: 229sqft

#		Max Dimensions	sqft	Included
8	W.I.C.	5'5" x 12'2"	66 sq. ft	Yes
9	Primary Bedroom	23'5" x 22'11"	551 sq. ft	Yes
10	Laundry	9'10" x 11'11"	115 sq. ft	Yes
11	Kitchen	14'9" x 25'10"	380 sq. ft	Yes
12	Dining Area	13'3" x 25'9"	341 sq. ft	Yes
13	Bedroom	12'11" x 14'8"	179 sq. ft	Yes
14	Hall	3'1" x 6'3"	19 sq. ft	Yes
15	Bath	6'5" x 11'2"	71 sq. ft	Yes
16	Screened Porch	15'3" x 13'3"	203 sq. ft	No
17	Sunroom	11'9" x 24'5"	287 sq. ft	Yes
18	Hall	4'6" x 12'6"	56 sq. ft	Yes

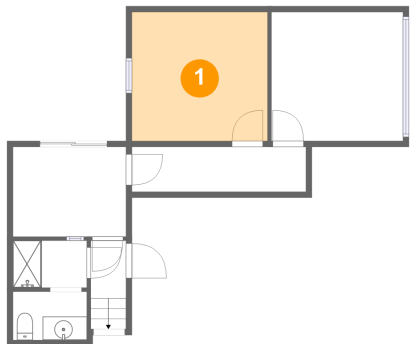
Home report

85 North Fork Road, Centennial, Albany County, Wyoming,  
United States, 82055

#		Max Dimensions	sqft	Included
19	Bedroom	11'4" x 14'8"	138 sq. ft	Yes
20	Bath	10'0" x 12'2"	120 sq. ft	Yes

85 North Fork Road, Centennial, Albany County, Wyoming,  
United States, 82055

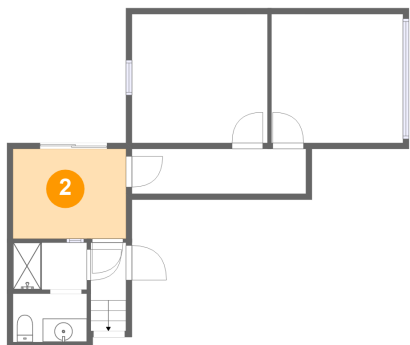
1 Floor 1 - Bedroom



Max Dimensions: 11'7" x 11'0"  
Calculated Area: 128 sq. ft  
Included: Yes

Heated: Yes  
Finished: Yes  
Enclosed: Yes  
Contiguous: Yes  
Permitted: Yes  
Wet space: No  
Addition: No  
Conversion: No

2 Floor 1 - Room

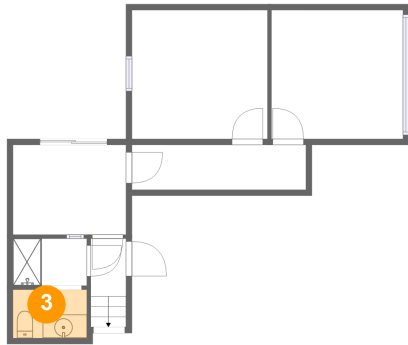


Max Dimensions: 9'8" x 7'8"  
Calculated Area: 74 sq. ft  
Included: Yes

Heated: Yes  
Finished: Yes  
Enclosed: Yes  
Contiguous: Yes  
Permitted: Yes  
Wet space: No  
Addition: No  
Conversion: No

85 North Fork Road, Centennial, Albany County, Wyoming,  
United States, 82055

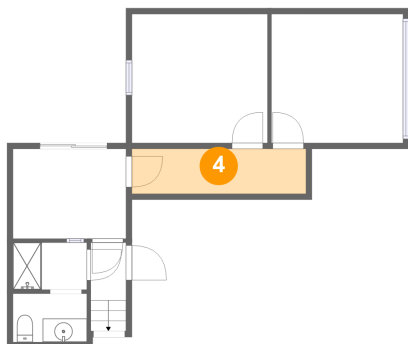
### 3 Floor 1 - WC



Max Dimensions: 6'4" x 4'2"  
Calculated Area: 26 sq. ft  
Included: Yes

Heated: Yes  
Finished: Yes  
Enclosed: Yes  
Contiguous: Yes  
Permitted: Yes  
Wet space: Yes  
Addition: No  
Conversion: No

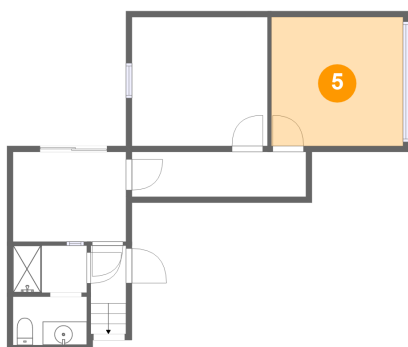
### 4 Floor 1 - Hall



Max Dimensions: 14'11" x 3'10"  
Calculated Area: 57 sq. ft  
Included: Yes

Heated: Yes  
Finished: Yes  
Enclosed: Yes  
Contiguous: Yes  
Permitted: Yes  
Wet space: No  
Addition: No  
Conversion: No

### 5 Floor 1 - Bedroom

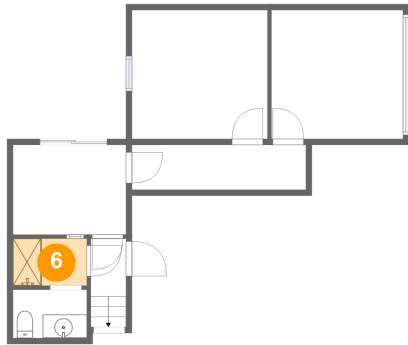


Max Dimensions: 11'3" x 11'0"  
Calculated Area: 124 sq. ft  
Included: Yes

Heated: Yes  
Finished: Yes  
Enclosed: Yes  
Contiguous: Yes  
Permitted: Yes  
Wet space: No  
Addition: No  
Conversion: No

85 North Fork Road, Centennial, Albany County, Wyoming,  
United States, 82055

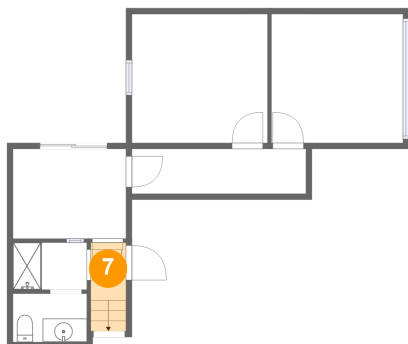
## 6 Floor 1 - Bath



Max Dimensions: 6'4" x 4'0"  
Calculated Area: 25 sq. ft  
Included: Yes

Heated: Yes  
Finished: Yes  
Enclosed: Yes  
Contiguous: Yes  
Permitted: Yes  
Wet space: Yes  
Addition: No  
Conversion: No

## 7 Floor 1 - Hall



Max Dimensions: 3'0" x 4'11"  
Calculated Area: 23 sq. ft  
Included: Yes

Heated: Yes  
Finished: Yes  
Enclosed: Yes  
Contiguous: Yes  
Permitted: Yes  
Wet space: No  
Addition: No  
Conversion: No

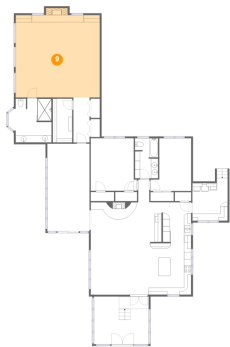
## 8 Floor 2 - W.I.C.



Max Dimensions: 5'5" x 12'2"  
Calculated Area: 66 sq. ft  
Included: Yes

Heated: Yes  
Finished: Yes  
Enclosed: Yes  
Contiguous: Yes  
Permitted: Yes  
Wet space: No  
Addition: No  
Conversion: No

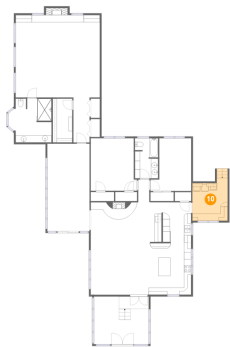
9 Floor 2 - Primary Bedroom



Max Dimensions: 23'5" x 22'11"  
Calculated Area: 551 sq. ft  
Included: Yes

Heated: Yes  
Finished: Yes  
Enclosed: Yes  
Contiguous: Yes  
Permitted: Yes  
Wet space: No  
Addition: No  
Conversion: No

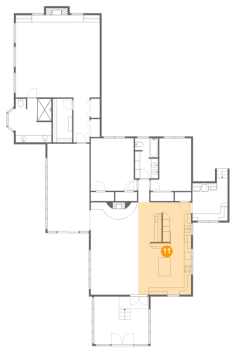
10 Floor 2 - Laundry



Max Dimensions: 9'10" x 11'11"  
Calculated Area: 115 sq. ft  
Included: Yes

Heated: Yes  
Finished: Yes  
Enclosed: Yes  
Contiguous: Yes  
Permitted: Yes  
Wet space: No  
Addition: No  
Conversion: No

11 Floor 2 - Kitchen



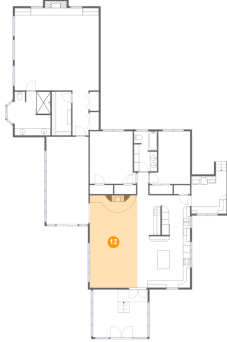
Max Dimensions: 14'9" x 25'10"  
Calculated Area: 380 sq. ft  
Included: Yes

Heated: Yes  
Finished: Yes  
Enclosed: Yes  
Contiguous: Yes  
Permitted: Yes  
Wet space: No  
Addition: No  
Conversion: No



85 North Fork Road, Centennial, Albany County, Wyoming,  
United States, 82055

## 12 Floor 2 - Dining Area



Max Dimensions: 13'3" x 25'9"  
Calculated Area: 341 sq. ft  
Included: Yes

Heated: Yes  
Finished: Yes  
Enclosed: Yes  
Contiguous: Yes  
Permitted: Yes  
Wet space: No  
Addition: No  
Conversion: No

## 13 Floor 2 - Bedroom



Max Dimensions: 12'11" x 14'8"  
Calculated Area: 179 sq. ft  
Included: Yes

Heated: Yes  
Finished: Yes  
Enclosed: Yes  
Contiguous: Yes  
Permitted: Yes  
Wet space: No  
Addition: No  
Conversion: No

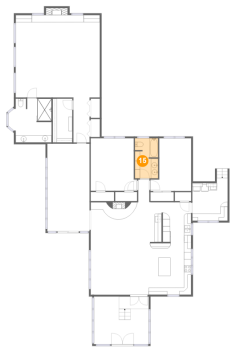
## 14 Floor 2 - Hall



Max Dimensions: 3'1" x 6'3"  
Calculated Area: 19 sq. ft  
Included: Yes

Heated: Yes  
Finished: Yes  
Enclosed: Yes  
Contiguous: Yes  
Permitted: Yes  
Wet space: No  
Addition: No  
Conversion: No

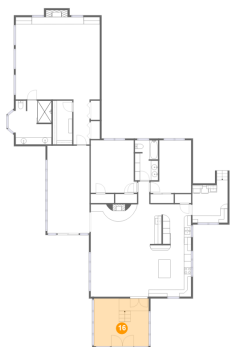
15 Floor 2 - Bath



Max Dimensions: 6'5" x 11'2"  
Calculated Area: 71 sq. ft  
Included: Yes

Heated: Yes  
Finished: Yes  
Enclosed: Yes  
Contiguous: Yes  
Permitted: Yes  
Wet space: Yes  
Addition: No  
Conversion: No

16 Floor 2 - Screened Porch



Max Dimensions: 15'3" x 13'3"  
Calculated Area: 203 sq. ft  
Included: No

Heated: No  
Finished: Yes  
Enclosed: No  
Contiguous: Yes  
Permitted: Yes  
Wet space: No  
Addition: No  
Conversion: No

17 Floor 2 - Sunroom

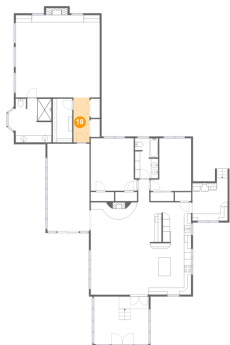


Max Dimensions: 11'9" x 24'5"  
Calculated Area: 287 sq. ft  
Included: Yes

Heated: Yes  
Finished: Yes  
Enclosed: Yes  
Contiguous: Yes  
Permitted: Yes  
Wet space: No  
Addition: No  
Conversion: No

85 North Fork Road, Centennial, Albany County, Wyoming,  
United States, 82055

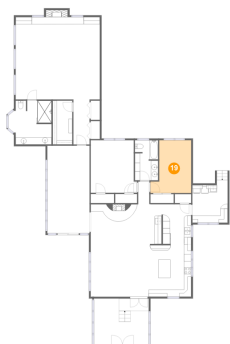
18 Floor 2 - Hall



Max Dimensions: 4'6" x 12'6"  
Calculated Area: 56 sq. ft  
Included: Yes

Heated: Yes  
Finished: Yes  
Enclosed: Yes  
Contiguous: Yes  
Permitted: Yes  
Wet space: No  
Addition: No  
Conversion: No

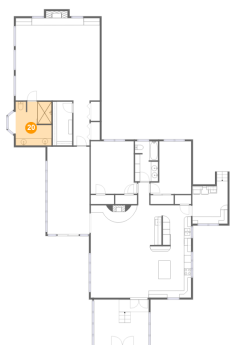
19 Floor 2 - Bedroom



Max Dimensions: 11'4" x 14'8"  
Calculated Area: 138 sq. ft  
Included: Yes

Heated: Yes  
Finished: Yes  
Enclosed: Yes  
Contiguous: Yes  
Permitted: Yes  
Wet space: No  
Addition: No  
Conversion: No

20 Floor 2 - Bath



Max Dimensions: 10'0" x 12'2"  
Calculated Area: 120 sq. ft  
Included: Yes

Heated: Yes  
Finished: Yes  
Enclosed: Yes  
Contiguous: Yes  
Permitted: Yes  
Wet space: Yes  
Addition: No  
Conversion: No