



# 1580 Jungle Avenue North, Jungle Prada, St. Petersburg, Pinellas County, Florida, United States,



## Property summary

 **1** Garages

 **5** Bedrooms

 **3** Bathrooms

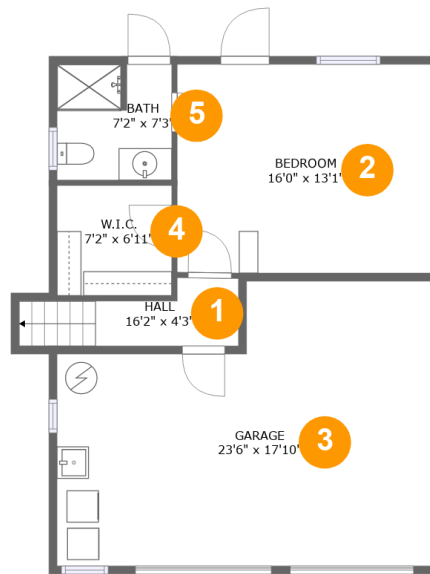
 **0** Half baths

 **3** Floors

 **2,158**  
Gross living  
area sqft

 **2,935**  
Total sqft

# 1580 Jungle Avenue North, Jungle Prada, St. Petersburg, Pinellas County, Florida, United States,



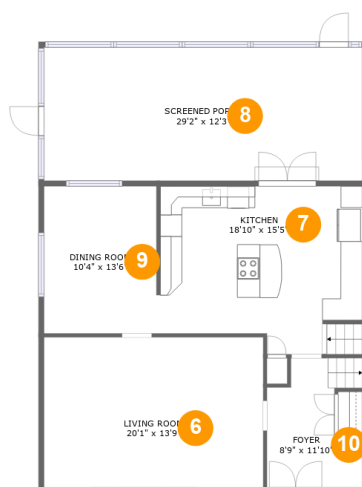
## Room dimensions

Floor 1

Total sqft: 803 Living area: 410

#		Dimensions	sqft	Counted as living area
1	Hall	16'2" x 4'3"	44 sq. ft	Yes
2	Bedroom	16'0" x 13'1"	209 sq. ft	Yes
3	Garage	23'6" x 17'10"	365 sq. ft	No
4	Cl	7'2" x 6'11"	49 sq. ft	Yes
5	Bath	7'2" x 7'3"	51 sq. ft	Yes

# 1580 Jungle Avenue North, Jungle Prada, St. Petersburg, Pinellas County, Florida, United States,



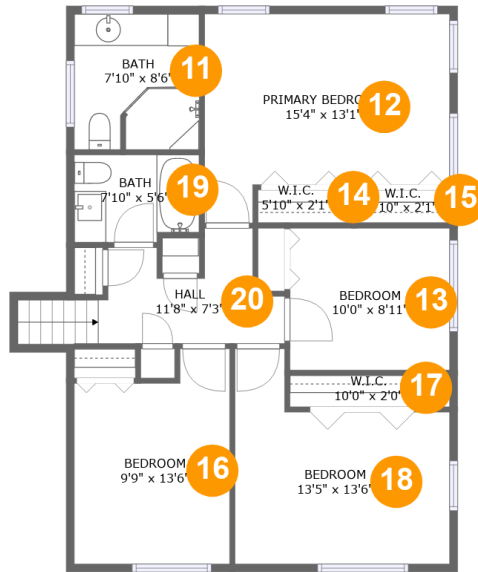
## Room dimensions

Floor 2

Total sqft: 1249 Living area: 865

#		Dimensions	sqft	Counted as living area
6	Living Room	20'1" x 13'9"	277 sq. ft	Yes
7	Kitchen	18'10" x 15'5"	257 sq. ft	Yes
8	Outdoor	29'2" x 12'3"	357 sq. ft	No
9	Dining Room	10'4" x 13'6"	140 sq. ft	Yes
10	Entry	8'9" x 11'10"	84 sq. ft	Yes

**1580 Jungle Avenue North, Jungle Prada, St. Petersburg, Pinellas County, Florida, United States,**



**Room dimensions**

Floor 3

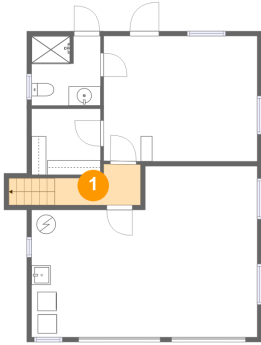
Total sqft: 883

Living area: 883

#		Dimensions	sqft	Counted as living area
11	Bath	7'10" x 8'6"	66 sq. ft	Yes
12	Bedroom	15'4" x 13'11"	171 sq. ft	Yes
13	Bedroom	10'0" x 8'11"	89 sq. ft	Yes
14	Cl	5'10" x 2'1"	12 sq. ft	Yes
15	Cl	5'10" x 2'1"	12 sq. ft	Yes
16	Bedroom	9'9" x 13'6"	117 sq. ft	Yes
17	Cl	10'0" x 2'0"	20 sq. ft	Yes
18	Bedroom	13'5" x 13'6"	140 sq. ft	Yes
19	Bath	7'10" x 5'6"	41 sq. ft	Yes
20	Hall	11'8" x 7'3"	74 sq. ft	Yes

**1580 Jungle Avenue North, Jungle Prada, St.  
Petersburg, Pinellas County, Florida, United States,**

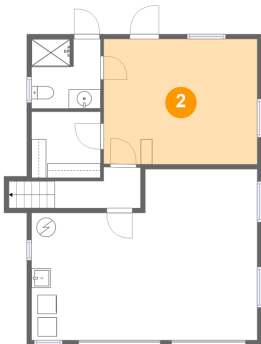
**1 Floor 1 - Hall**



**Dimensions:** 16'2" x 4'3"  
**Area:** 44 sq. ft  
**Counted as living area:** Yes

**Heated:** Yes  
**Finished:** Yes  
**Enclosed:** Yes  
**Contiguous:** Yes  
**Permitted:** Yes  
**Wet space:** No  
**Addition:** No  
**Conversion:** No

**2 Floor 1 - Bedroom**

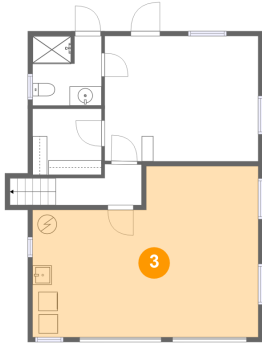


**Dimensions:** 16'0" x 13'1"  
**Area:** 209 sq. ft  
**Counted as living area:** Yes

**Heated:** Yes  
**Finished:** Yes  
**Enclosed:** Yes  
**Contiguous:** Yes  
**Permitted:** Yes  
**Wet space:** No  
**Addition:** No  
**Conversion:** No

**1580 Jungle Avenue North, Jungle Prada, St.  
Petersburg, Pinellas County, Florida, United States,**

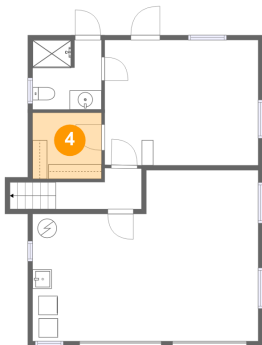
### 3 Floor 1 - Garage



**Dimensions:** 23'6" x 17'10"  
**Area:** 365 sq. ft  
**Counted as living area:** No

**Heated:** No  
**Finished:** No  
**Enclosed:** Yes  
**Contiguous:** Yes  
**Permitted:** Yes  
**Wet space:** No  
**Addition:** No  
**Conversion:** No

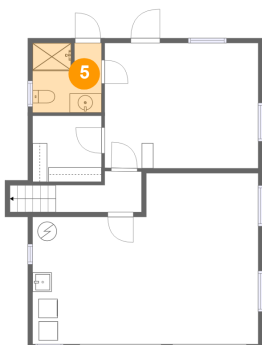
### 4 Floor 1 - Cl



**Dimensions:** 7'2" x 6'11"  
**Area:** 49 sq. ft  
**Counted as living area:** Yes

**Heated:** Yes  
**Finished:** Yes  
**Enclosed:** Yes  
**Contiguous:** Yes  
**Permitted:** Yes  
**Wet space:** No  
**Addition:** No  
**Conversion:** No

### 5 Floor 1 - Bath

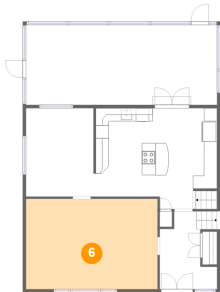


**Dimensions:** 7'2" x 7'3"  
**Area:** 51 sq. ft  
**Counted as living area:** Yes

**Heated:** Yes  
**Finished:** Yes  
**Enclosed:** Yes  
**Contiguous:** Yes  
**Permitted:** Yes  
**Wet space:** Yes  
**Addition:** No  
**Conversion:** No

**1580 Jungle Avenue North, Jungle Prada, St.  
Petersburg, Pinellas County, Florida, United States,**

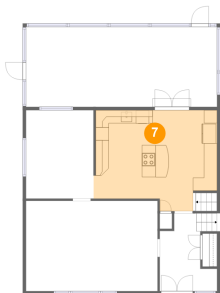
## 6 Floor 2 - Living Room



**Dimensions: 20'1" x 13'9"**  
**Area: 277 sq. ft**  
**Counted as living area: Yes**

**Heated: Yes**  
**Finished: Yes**  
**Enclosed: Yes**  
**Contiguous: Yes**  
**Permitted: Yes**  
**Wet space: No**  
**Addition: No**  
**Conversion: No**

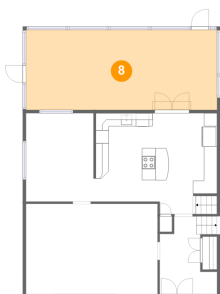
## 7 Floor 2 - Kitchen



**Dimensions: 18'10" x 15'5"**  
**Area: 257 sq. ft**  
**Counted as living area: Yes**

**Heated: Yes**  
**Finished: Yes**  
**Enclosed: Yes**  
**Contiguous: Yes**  
**Permitted: Yes**  
**Wet space: No**  
**Addition: No**  
**Conversion: No**

## 8 Floor 2 - Outdoor

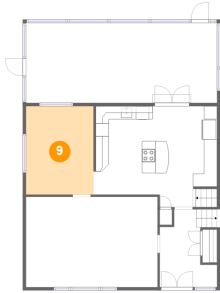


**Dimensions: 29'2" x 12'3"**  
**Area: 357 sq. ft**  
**Counted as living area: No**

**Heated: No**  
**Finished: Yes**  
**Enclosed: No**  
**Contiguous: Yes**  
**Permitted: Yes**  
**Wet space: No**  
**Addition: No**  
**Conversion: No**

**1580 Jungle Avenue North, Jungle Prada, St.  
Petersburg, Pinellas County, Florida, United States,**

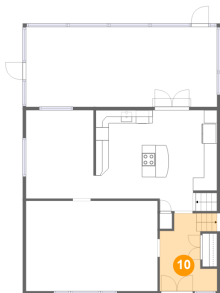
**9 Floor 2 - Dining Room**



**Dimensions:** 10'4" x 13'6"  
**Area:** 140 sq. ft  
**Counted as living area:** Yes

**Heated:** Yes  
**Finished:** Yes  
**Enclosed:** Yes  
**Contiguous:** Yes  
**Permitted:** Yes  
**Wet space:** No  
**Addition:** No  
**Conversion:** No

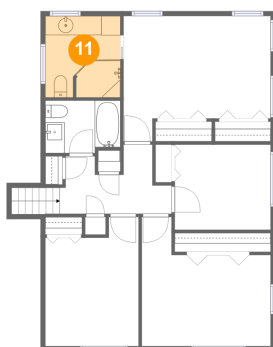
**10 Floor 2 - Entry**



**Dimensions:** 8'9" x 11'10"  
**Area:** 84 sq. ft  
**Counted as living area:** Yes

**Heated:** Yes  
**Finished:** Yes  
**Enclosed:** Yes  
**Contiguous:** Yes  
**Permitted:** Yes  
**Wet space:** No  
**Addition:** No  
**Conversion:** No

**11 Floor 3 - Bath**



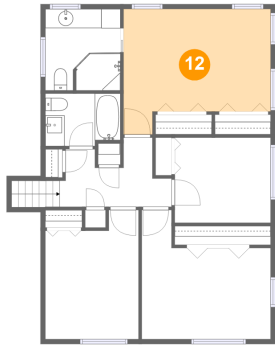
**Dimensions:** 7'10" x 8'6"  
**Area:** 66 sq. ft  
**Counted as living area:** Yes

**Heated:** Yes  
**Finished:** Yes  
**Enclosed:** Yes  
**Contiguous:** Yes  
**Permitted:** Yes  
**Wet space:** Yes  
**Addition:** No  
**Conversion:** No



**1580 Jungle Avenue North, Jungle Prada, St.  
Petersburg, Pinellas County, Florida, United States,**

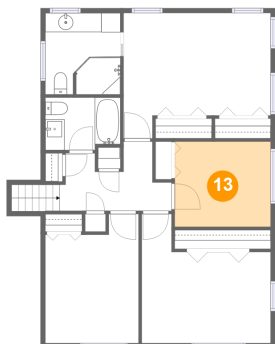
**12 Floor 3 - Bedroom**



**Dimensions:** 15'4" x 13'1"  
**Area:** 171 sq. ft  
**Counted as living area:** Yes

**Heated:** Yes  
**Finished:** Yes  
**Enclosed:** Yes  
**Contiguous:** Yes  
**Permitted:** Yes  
**Wet space:** No  
**Addition:** No  
**Conversion:** No

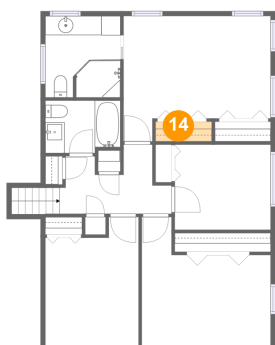
**13 Floor 3 - Bedroom**



**Dimensions:** 10'0" x 8'11"  
**Area:** 89 sq. ft  
**Counted as living area:** Yes

**Heated:** Yes  
**Finished:** Yes  
**Enclosed:** Yes  
**Contiguous:** Yes  
**Permitted:** Yes  
**Wet space:** No  
**Addition:** No  
**Conversion:** No

**14 Floor 3 - Cl**

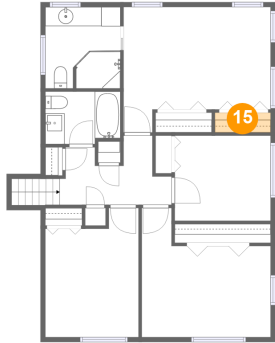


**Dimensions:** 5'10" x 2'1"  
**Area:** 12 sq. ft  
**Counted as living area:** Yes

**Heated:** Yes  
**Finished:** Yes  
**Enclosed:** Yes  
**Contiguous:** Yes  
**Permitted:** Yes  
**Wet space:** No  
**Addition:** No  
**Conversion:** No

**1580 Jungle Avenue North, Jungle Prada, St.  
Petersburg, Pinellas County, Florida, United States,**

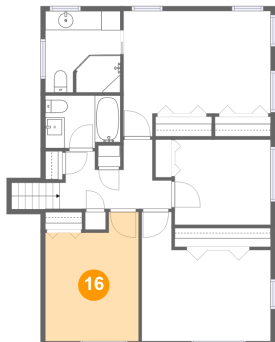
**15 Floor 3 - Cl**



Dimensions: 5'10" x 2'1"  
Area: 12 sq. ft  
Counted as living area: Yes

Heated: Yes  
Finished: Yes  
Enclosed: Yes  
Contiguous: Yes  
Permitted: Yes  
Wet space: No  
Addition: No  
Conversion: No

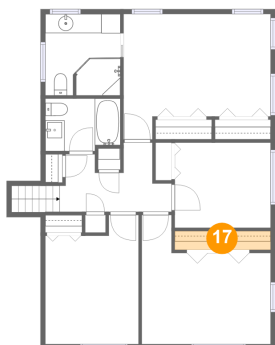
**16 Floor 3 - Bedroom**



Dimensions: 9'9" x 13'6"  
Area: 117 sq. ft  
Counted as living area: Yes

Heated: Yes  
Finished: Yes  
Enclosed: Yes  
Contiguous: Yes  
Permitted: Yes  
Wet space: No  
Addition: No  
Conversion: No

**17 Floor 3 - Cl**

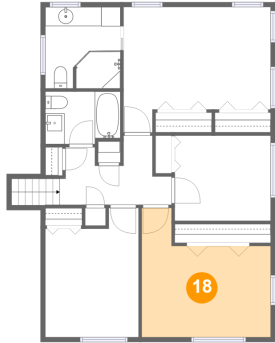


Dimensions: 10'0" x 2'0"  
Area: 20 sq. ft  
Counted as living area: Yes

Heated: Yes  
Finished: Yes  
Enclosed: Yes  
Contiguous: Yes  
Permitted: Yes  
Wet space: No  
Addition: No  
Conversion: No

**1580 Jungle Avenue North, Jungle Prada, St.  
Petersburg, Pinellas County, Florida, United States,**

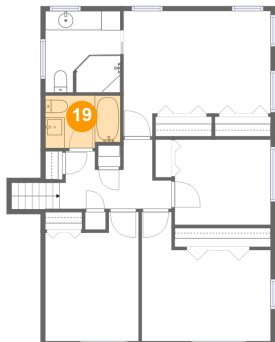
**18 Floor 3 - Bedroom**



**Dimensions:** 13'5" x 13'6"  
**Area:** 140 sq. ft  
**Counted as living area:** Yes

**Heated:** Yes  
**Finished:** Yes  
**Enclosed:** Yes  
**Contiguous:** Yes  
**Permitted:** Yes  
**Wet space:** No  
**Addition:** No  
**Conversion:** No

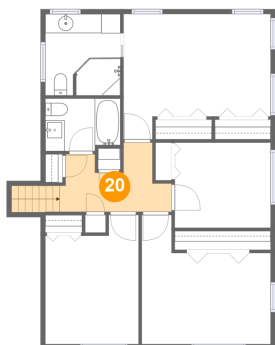
**19 Floor 3 - Bath**



**Dimensions:** 7'10" x 5'6"  
**Area:** 41 sq. ft  
**Counted as living area:** Yes

**Heated:** Yes  
**Finished:** Yes  
**Enclosed:** Yes  
**Contiguous:** Yes  
**Permitted:** Yes  
**Wet space:** Yes  
**Addition:** No  
**Conversion:** No

**20 Floor 3 - Hall**



**Dimensions:** 11'8" x 7'3"  
**Area:** 74 sq. ft  
**Counted as living area:** Yes

**Heated:** Yes  
**Finished:** Yes  
**Enclosed:** Yes  
**Contiguous:** Yes  
**Permitted:** Yes  
**Wet space:** No  
**Addition:** No  
**Conversion:** No