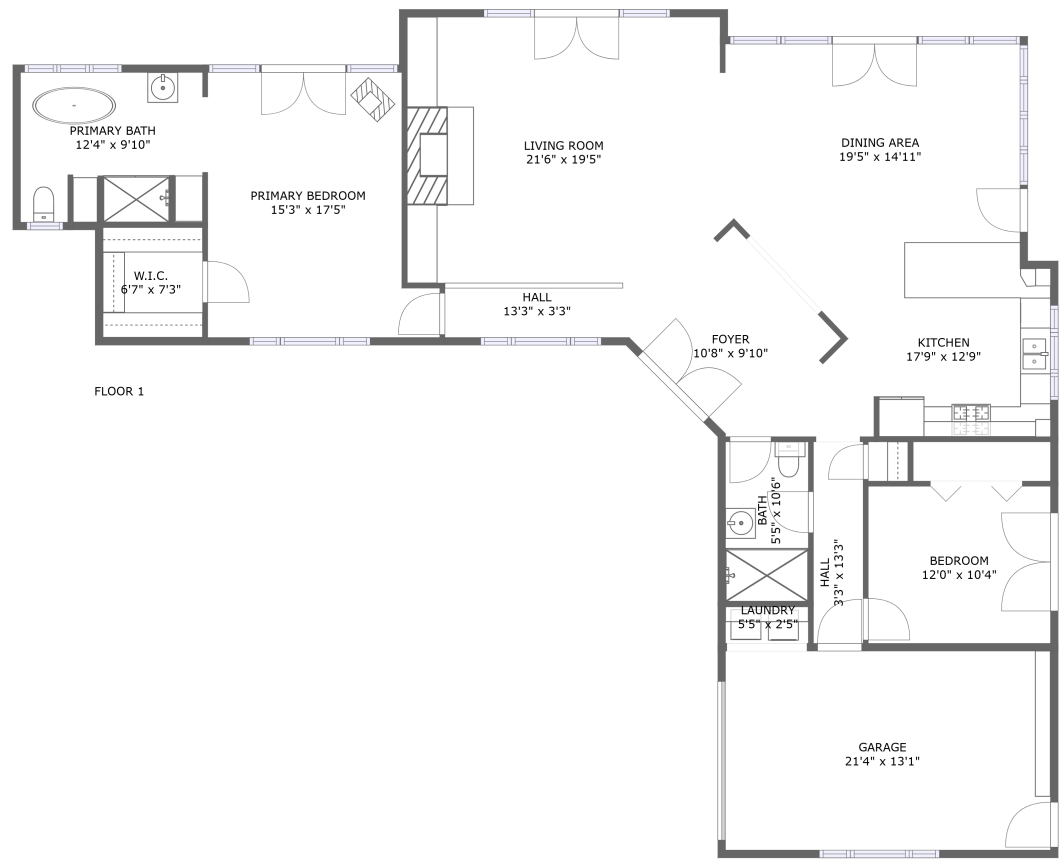




Home report


5375 Santa Rita Ranch Road, Templeton, San Luis Obispo
County, California, United States, 93465




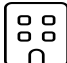
Property summary


 **1** Garages


 **2** Bedrooms

 **2** Bathrooms

 **0** Half baths

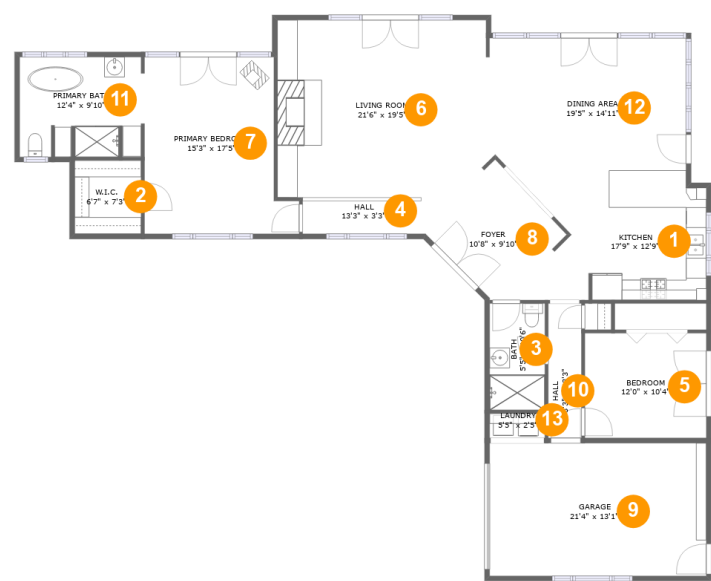
 **1** Floors

 **1,764** Gross living area sqft

 **2,086** Total sqft

Home report

5375 Santa Rita Ranch Road, Templeton, San Luis Obispo
County, California, United States, 93465



Room dimensions

Floor 1 Total sqft: 2086 Living area: 1764

#		Dimensions	sqft	Counted as living area
1	Kitchen	17'9" x 12'9"	205 sq. ft	Yes
2	W.I.C.	6'7" x 7'3"	47 sq. ft	Yes
3	Bath	5'5" x 10'6"	57 sq. ft	Yes
4	Hall	13'3" x 3'3"	45 sq. ft	Yes
5	Bedroom	12'0" x 10'4"	124 sq. ft	Yes
6	Living Room	21'6" x 19'5"	361 sq. ft	Yes
7	Primary Bedroom	15'3" x 17'5"	230 sq. ft	Yes
8	Foyer	10'8" x 9'10"	105 sq. ft	Yes
9	Garage	21'4" x 13'1"	280 sq. ft	No
10	Hall	3'3" x 13'3"	43 sq. ft	Yes
11	Primary Bath	12'4" x 9'10"	116 sq. ft	Yes

Home report

5375 Santa Rita Ranch Road, Templeton, San Luis Obispo
County, California, United States, 93465

#		Dimensions	sqft	Counted as living area
12	Dining Area	19'5" x 14'11"	251 sq. ft	Yes
13	Laundry	5'5" x 2'5"	13 sq. ft	No

Home report

5375 Santa Rita Ranch Road, Templeton, San Luis Obispo
County, California, United States, 93465

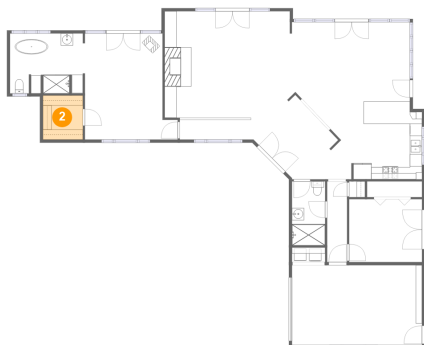
1 Floor 1 - Kitchen



Dimensions: 17'9" x 12'9"
Area: 205 sq. ft
Counted as living area: Yes

Heated: Yes
Finished: Yes
Enclosed: Yes
Contiguous: Yes
Permitted: Yes
Wet space: No
Addition: No
Conversion: No

2 Floor 1 - W.I.C.



Dimensions: 6'7" x 7'3"
Area: 47 sq. ft
Counted as living area: Yes

Heated: Yes
Finished: Yes
Enclosed: Yes
Contiguous: Yes
Permitted: Yes
Wet space: No
Addition: No
Conversion: No

5375 Santa Rita Ranch Road, Templeton, San Luis Obispo
County, California, United States, 93465

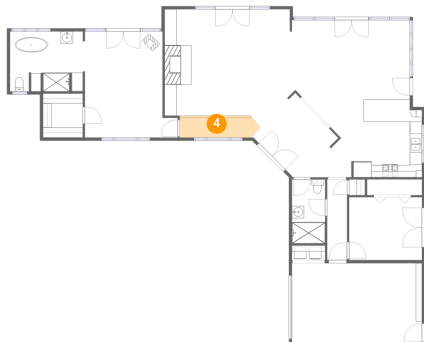
3 Floor 1 - Bath



Dimensions: 5'5" x 10'6"
Area: 57 sq. ft
Counted as living area: Yes

Heated: Yes
Finished: Yes
Enclosed: Yes
Contiguous: Yes
Permitted: Yes
Wet space: Yes
Addition: No
Conversion: No

4 Floor 1 - Hall



Dimensions: 13'3" x 3'3"
Area: 45 sq. ft
Counted as living area: Yes

Heated: Yes
Finished: Yes
Enclosed: Yes
Contiguous: Yes
Permitted: Yes
Wet space: No
Addition: No
Conversion: No

5 Floor 1 - Bedroom



Dimensions: 12'0" x 10'4"
Area: 124 sq. ft
Counted as living area: Yes

Heated: Yes
Finished: Yes
Enclosed: Yes
Contiguous: Yes
Permitted: Yes
Wet space: No
Addition: No
Conversion: No

5375 Santa Rita Ranch Road, Templeton, San Luis Obispo
County, California, United States, 93465

6 Floor 1 - Living Room



Dimensions: 21'6" x 19'5"
Area: 361 sq. ft
Counted as living area: Yes

Heated: Yes
Finished: Yes
Enclosed: Yes
Contiguous: Yes
Permitted: Yes
Wet space: No
Addition: No
Conversion: No

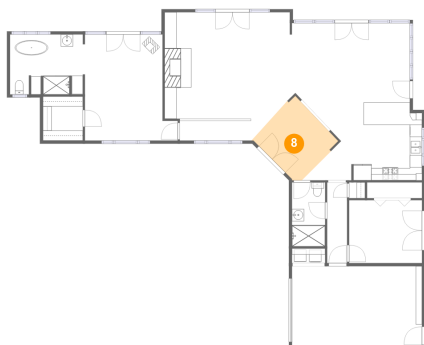
7 Floor 1 - Primary Bedroom



Dimensions: 15'3" x 17'5"
Area: 230 sq. ft
Counted as living area: Yes

Heated: Yes
Finished: Yes
Enclosed: Yes
Contiguous: Yes
Permitted: Yes
Wet space: No
Addition: No
Conversion: No

8 Floor 1 - Foyer

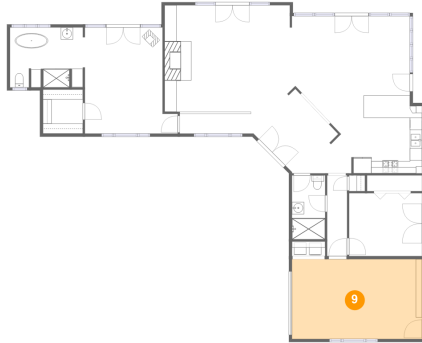


Dimensions: 10'8" x 9'10"
Area: 105 sq. ft
Counted as living area: Yes

Heated: Yes
Finished: Yes
Enclosed: Yes
Contiguous: Yes
Permitted: Yes
Wet space: No
Addition: No
Conversion: No

5375 Santa Rita Ranch Road, Templeton, San Luis Obispo
County, California, United States, 93465

9 Floor 1 - Garage



Dimensions: 21'4" x 13'1"
Area: 280 sq. ft
Counted as living area: No

Heated: No
Finished: No
Enclosed: Yes
Contiguous: Yes
Permitted: Yes
Wet space: No
Addition: No
Conversion: No

10 Floor 1 - Hall



Dimensions: 3'3" x 13'3"
Area: 43 sq. ft
Counted as living area: Yes

Heated: Yes
Finished: Yes
Enclosed: Yes
Contiguous: Yes
Permitted: Yes
Wet space: No
Addition: No
Conversion: No

11 Floor 1 - Primary Bath



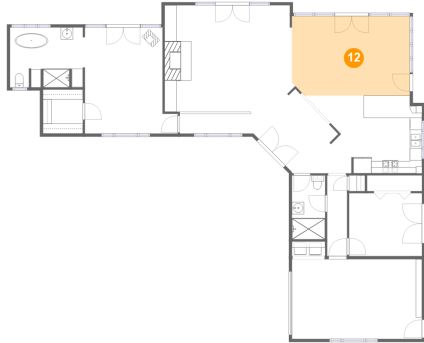
Dimensions: 12'4" x 9'10"
Area: 116 sq. ft
Counted as living area: Yes

Heated: Yes
Finished: Yes
Enclosed: Yes
Contiguous: Yes
Permitted: Yes
Wet space: Yes
Addition: No
Conversion: No

Home report

5375 Santa Rita Ranch Road, Templeton, San Luis Obispo
County, California, United States, 93465

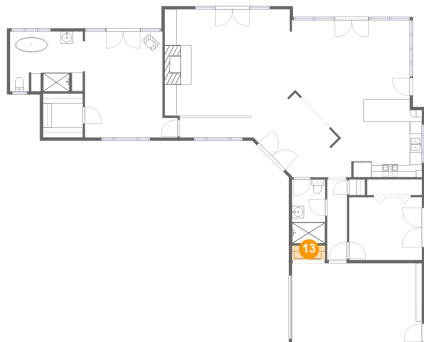
12 Floor 1 - Dining Area



Dimensions: 19'5" x 14'11"
Area: 251 sq. ft
Counted as living area: Yes

Heated: Yes
Finished: Yes
Enclosed: Yes
Contiguous: Yes
Permitted: Yes
Wet space: No
Addition: No
Conversion: No

13 Floor 1 - Laundry



Dimensions: 5'5" x 2'5"
Area: 13 sq. ft
Counted as living area: No

Heated: Yes
Finished: Yes
Enclosed: Yes
Contiguous: No
Permitted: Yes
Wet space: No
Addition: No
Conversion: No