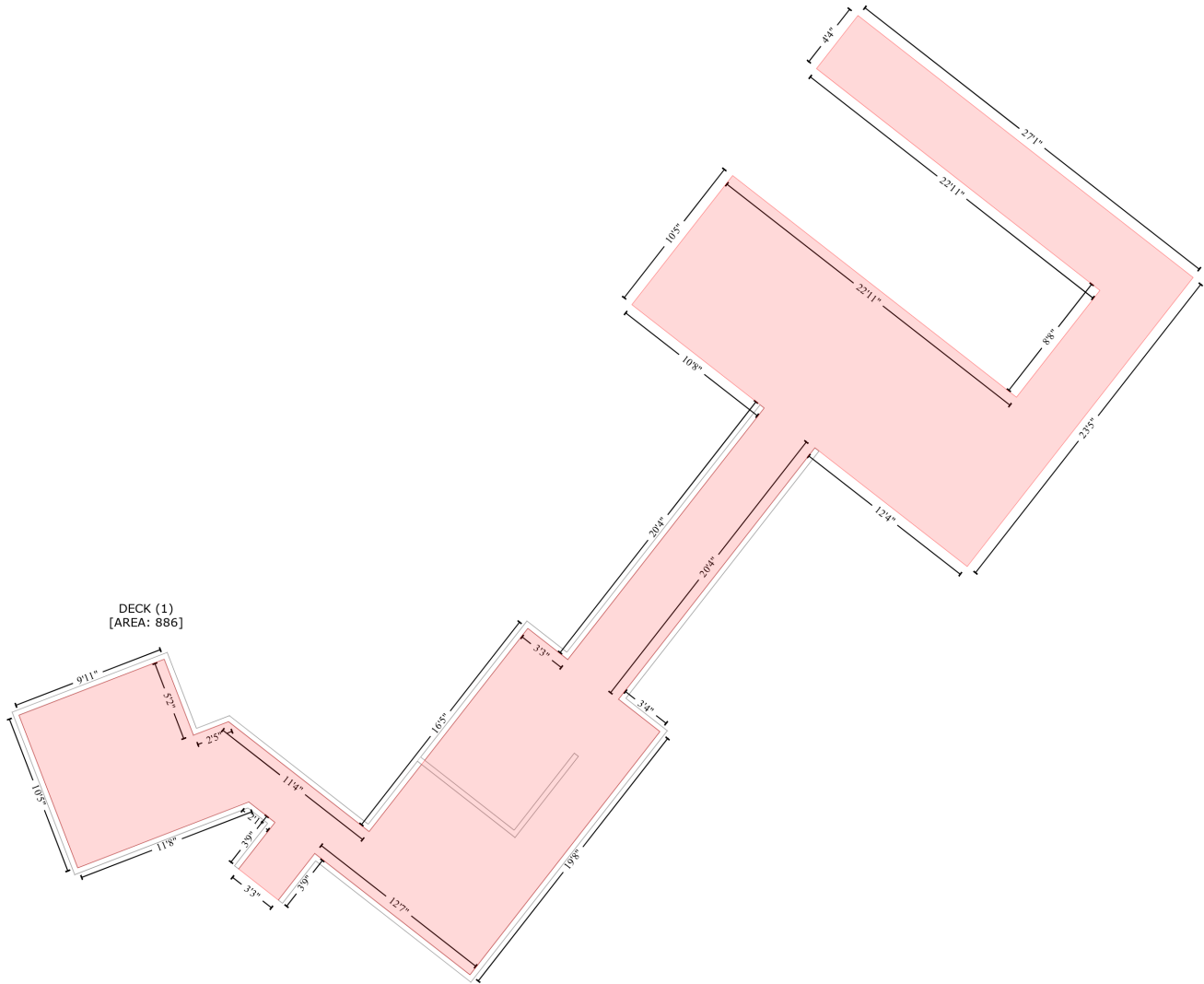


130 Talons Point Road, Seneca, Oconee County, South Carolina, United States, 29672

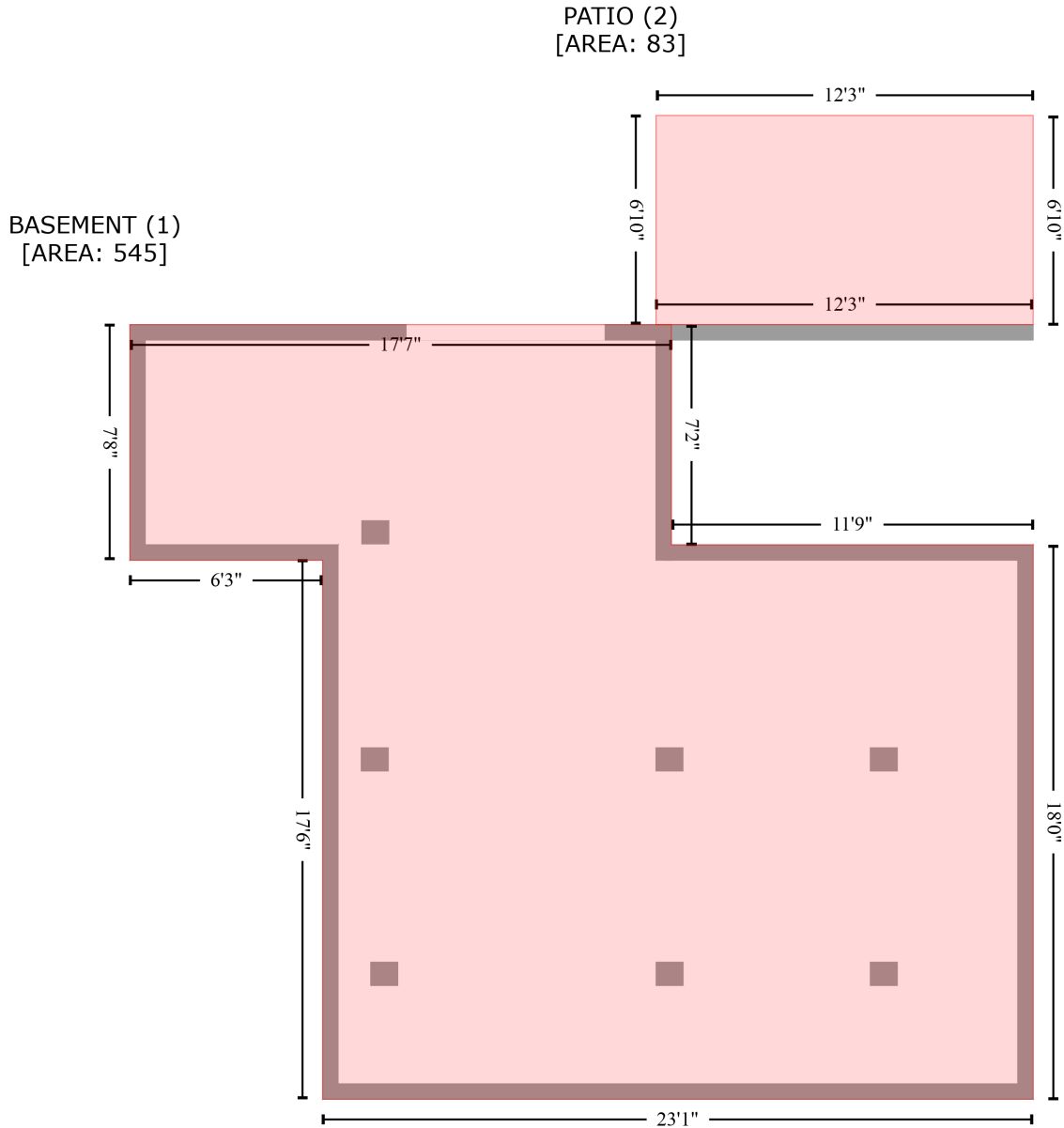
Gross Living Area: 3156 sq. ft



Space	Area (sq. ft)	Calculation <small>Coordinate Polygon Area Algorithm using inches</small>
DECK (Non-living area)	886	$ \begin{aligned} & -((925.9 + 1182.3) * (22 - 222.4) + (1182.3 + 1009.5) * (222.4 - 443.4) + (1009.5 + 893) * (443.4 - \\ & 352.6) + (893 + 742.8) * (352.6 - 544.8) + (742.8 + 774.5) * (544.8 - 569.6) + (774.5 + 629.2) * \\ & (569.6 - 755.6) + (629.2 + 510.5) * (755.6 - 662.8) + (510.5 + 482.7) * (662.8 - 698.4) + (482.7 + \\ & 452.3) * (698.4 - 674.7) + (452.3 + 480.1) * (674.7 - 639) + (480.1 + 460.1) * (639 - 623.4) + \\ & (460.1 + 329.2) * (623.4 - 673.8) + (329.2 + 284.2) * (673.8 - 557) + (284.2 + 395.4) * (557 - \\ & 514.2) + (395.4 + 417.7) * (514.2 - 572.3) + (417.7 + 444.5) * (572.3 - 562) + (444.5 + 552.1) * \\ & (562 - 646) + (552.1 + 673.5) * (646 - 490.6) + (673.5 + 704) * (490.6 - 514.5) + (704 + 854.2) * \\ & (514.5 - 322.2) + (854.2 + 753) * (322.2 - 243.2) + (753 + 830.1) * (243.2 - 144.5) + (830.1 + \\ & 1047.2) * (144.5 - 313.9) + (1047.2 + 1111) * (313.9 - 232.3) + (1111 + 894.2) * (232.3 - 62.7) + \\ & (894.2 + 925.9) * (62.7 - 22)) * 0.5 * 0.00694 \end{aligned} $

130 Talons Point Road, Seneca, Oconee County, South Carolina, United States, 29672

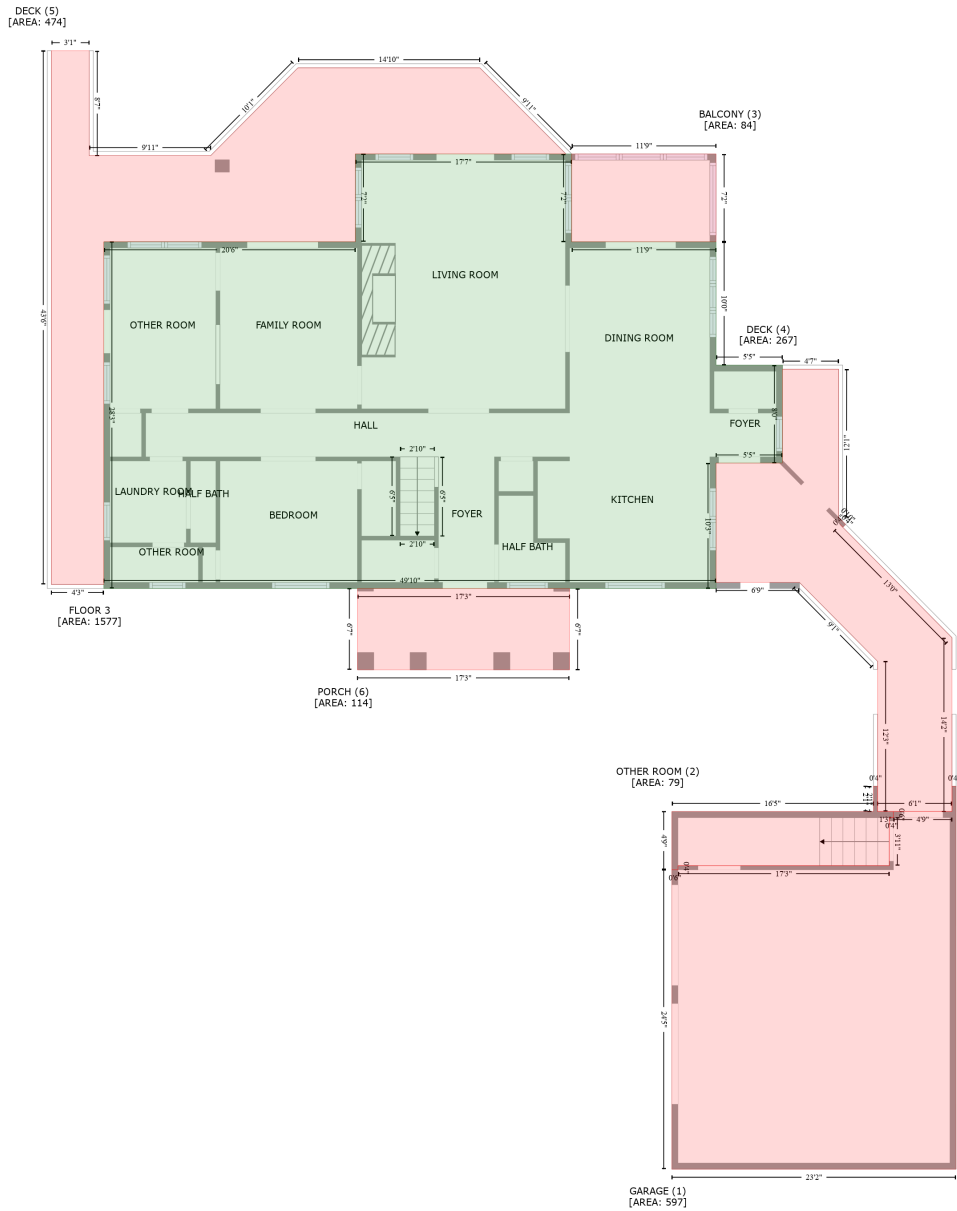
Gross Living Area: 3156 sq. ft



Space	Area (sq. ft)	Calculation <small>Coordinate Polygon Area Algorithm using inches</small>
BASEMENT (Non-living area)	545	$-((621.8 + 621.8) * (1568.4 - 1654.2) + (621.8 + 763) * (1654.2 - 1654.2) + (763 + 763) * (1654.2 - 1870.4) + (763 + 485.7) * (1870.4 - 1870.4) + (485.7 + 485.7) * (1870.4 - 1660.2) + (485.7 + 410.5) * (1660.2 - 1660.2) + (410.5 + 410.5) * (1660.2 - 1568.4) + (410.5 + 621.8) * (1568.4 - 1568.4)) * 0.5 * 0.00694$
PATIO (Non-living area)	83	$-((763 + 763) * (1486.8 - 1568.4) + (763 + 615.8) * (1568.4 - 1568.4) + (615.8 + 615.8) * (1568.4 - 1486.8) + (615.8 + 763) * (1486.8 - 1486.8)) * 0.5 * 0.00694$

130 Talons Point Road, Seneca, Oconee County, South Carolina, United States, 29672

Gross Living Area: 3156 sq. ft



Space	Area (sq. ft)	Calculation
FLOOR 3 (Living area)	1577	Coordinate Polygon Area Algorithm using inches $-((621.8 + 621.8) * (1568.4 - 1654.2) + (621.8 + 763) * (1654.2 - 1654.2) + (763 + 763) * (1654.2 - 1774.7) + (763 + 827.9) * (1774.7 - 1774.7) + (827.9 + 827.9) * (1774.7 - 1870.4) + (827.9 + 763) * (1870.4 - 1870.4) + (763 + 763) * (1870.4 - 1993) + (763 + 164.6) * (1993 - 1993) + (164.6 + 164.6) * (1993 - 1654.2) + (164.6 + 410.5) * (1654.2 - 1654.2) + (410.5 + 410.5) * (1654.2 - 1568.4) + (410.5 + 621.8) * (1568.4 - 1568.4)) * 0.5 * 0.00694$
GARAGE	597	$-((997.6 + 997.6) * (2186.2 - 2560.5) + (997.6 + 719.8) * (2560.5 - 2560.5) + (719.8 + 719.8) * (2560.5 - 2186.2)) * 0.5 * 0.00694$

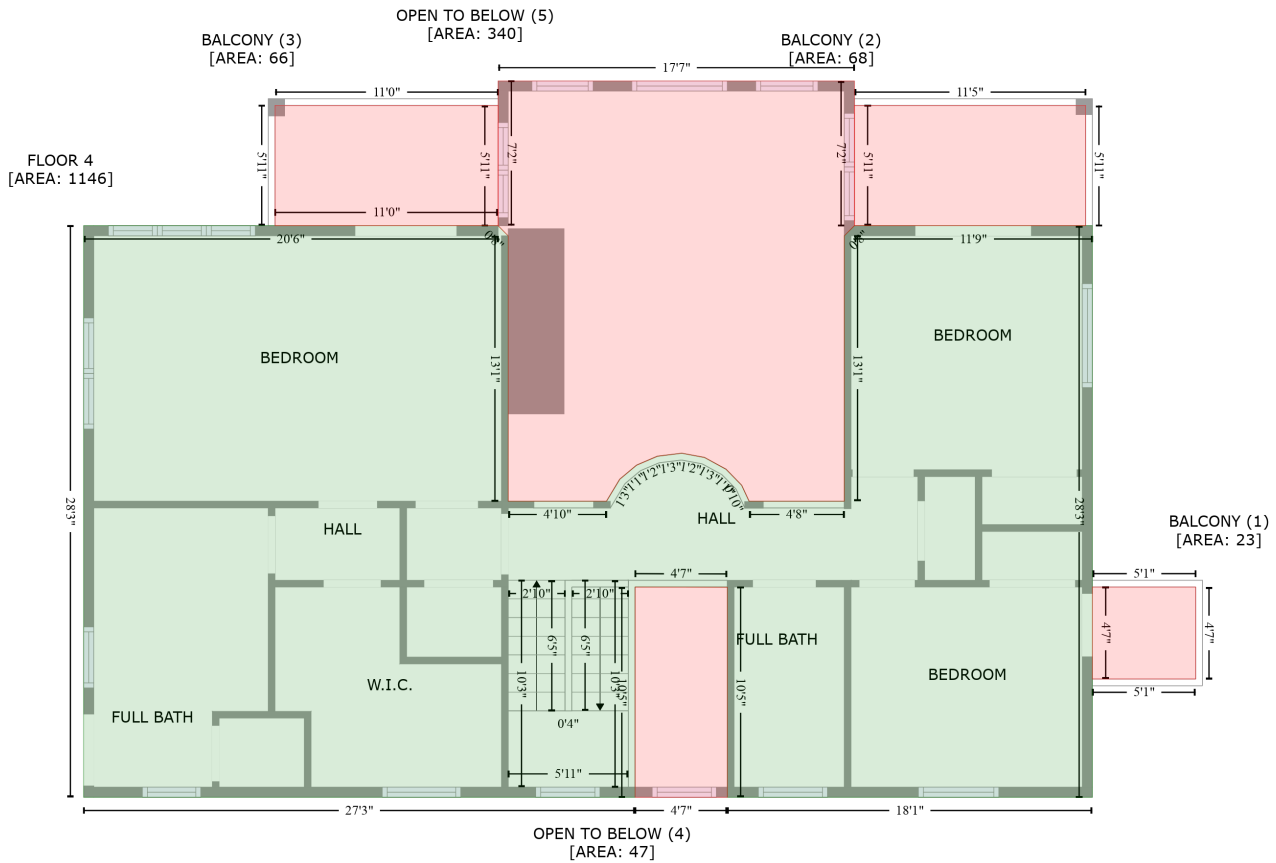
130 Talons Point Road, Seneca, Oconee County, South Carolina, United States, 29672

Gross Living Area: 3156 sq. ft

Space	Area (sq. ft)	Calculation <small>Coordinate Polygon Area Algorithm using inches</small>
(Non-living area)		$(2560.5 - 2267.9) + (719.8 + 725.8) * (2267.9 - 2267.9) + (725.8 + 725.8) * (2267.9 - 2263.9) + (725.8 + 932.4) * (2263.9 - 2263.9) + (932.4 + 932.4) * (2263.9 - 2216.9) + (932.4 + 936.4) * (2216.9 - 2216.9) + (936.4 + 936.4) * (2216.9 - 2210.9) + (936.4 + 993.6) * (2210.9 - 2210.9) + (993.6 + 993.6) * (2210.9 - 2186.2) + (993.6 + 997.6) * (2186.2 - 2186.2) * 0.5 * 0.00694$
OTHER ROOM (Non-living area)	79	$-((920.9 + 920.9) * (2186.2 - 2210.9) + (920.9 + 936.4) * (2210.9 - 2210.9) + (936.4 + 936.4) * (2210.9 - 2216.9) + (936.4 + 932.4) * (2216.9 - 2216.9) + (932.4 + 932.4) * (2216.9 - 2263.9) + (932.4 + 725.8) * (2263.9 - 2263.9) + (725.8 + 725.8) * (2263.9 - 2267.9) + (725.8 + 719.8) * (2267.9 - 2267.9) + (719.8 + 719.8) * (2267.9 - 2210.9) + (719.8 + 916.9) * (2210.9 - 2210.9) + (916.9 + 916.9) * (2210.9 - 2186.2) + (916.9 + 920.9) * (2186.2 - 2186.2) * 0.5 * 0.00694$
BALCONY (Non-living area)	84	$-((763 + 763) * (1568.4 - 1654.2) + (763 + 621.8) * (1654.2 - 1654.2) + (621.8 + 621.8) * (1654.2 - 1568.4) + (621.8 + 763) * (1568.4 - 1568.4) * 0.5 * 0.00694$
DECK (Non-living area)	267	$-((882.8 + 882.7) * (1778.7 - 1923.2) + (882.7 + 889.8) * (1923.2 - 1930.4) + (889.8 + 886.9) * (1930.4 - 1933.2) + (886.9 + 884.2) * (1933.2 - 1930.4) + (884.2 + 993.6) * (1930.4 - 2041) + (993.6 + 993.6) * (2041 - 2210.9) + (993.6 + 920.9) * (2210.9 - 2210.9) + (920.9 + 920.9) * (2210.9 - 2064.2) + (920.9 + 844.4) * (2064.2 - 1987) + (844.4 + 763) * (1987 - 1987) + (763 + 763) * (1987 - 1870.4) + (763 + 827.9) * (1870.4 - 1870.4) + (827.9 + 827.9) * (1870.4 - 1778.7) + (827.9 + 882.8) * (1778.7 - 1778.7) * 0.5 * 0.00694$
DECK (Non-living area)	474	$-((150.3 + 150.3) * (1467.5 - 1570) + (150.3 + 269.1) * (1570 - 1570) + (269.1 + 354.3) * (1570 - 1484.2) + (354.3 + 532.1) * (1484.2 - 1484.2) + (532.1 + 616.3) * (1484.2 - 1568.4) + (616.3 + 410.5) * (1568.4 - 1568.4) + (410.5 + 410.5) * (1568.4 - 1654.2) + (410.5 + 164.6) * (1654.2 - 1654.2) + (164.6 + 164.6) * (1654.2 - 1989) + (164.6 + 113.3) * (1989 - 1989) + (113.3 + 113.3) * (1989 - 1467.5) + (113.3 + 150.3) * (1467.5 - 1467.5) * 0.5 * 0.00694$
PORCH (Non-living area)	114	$-((619.8 + 619.8) * (1993 - 2072.5) + (619.8 + 412.5) * (2072.5 - 2072.5) + (412.5 + 412.5) * (2072.5 - 1993) + (412.5 + 619.8) * (1993 - 1993) * 0.5 * 0.00694$

130 Talons Point Road, Seneca, Oconee County, South Carolina, United States, 29672

Gross Living Area: 3156 sq. ft



Space	Area (sq. ft)	Calculation
FLOOR 4 (Living area)	1146	$-\left((410.5 + 416.5) * (1654.2 - 1660.2) + (416.5 + 416.5) * (1660.2 - 1817.5) + (416.5 + 474.8) * (1817.5 - 1817.5) + (474.8 + 482.6) * (1817.5 - 1804.5) + (482.6 + 492.4) * (1804.5 - 1796.4) + (492.4 + 505) * (1796.4 - 1790.9) + (505 + 519.4) * (1790.9 - 1789.1) + (519.4 + 532.9) * (1789.1 - 1791.6) + (532.9 + 545.7) * (1791.6 - 1798.6) + (545.7 + 555) * (1798.6 - 1808.1) + (555 + 559.4) * (1808.1 - 1817.5) + (559.4 + 615.8) * (1817.5 - 1817.5) + (615.8 + 615.8) * (1817.5 - 1660.2) + (615.8 + 621.8) * (1660.2 - 1654.2) + (621.8 + 763) * (1654.2 - 1654.2) + (763 + 763) * (1654.2 - 1993) + (763 + 546.5) * (1993 - 1993) + (546.5 + 546.5) * (1993 - 1868.5) + (546.5 + 491.7) * (1868.5 - 1868.4) + (491.7 + 491.7) * (1868.4 - 1993) + (491.7 + 164.6) * (1993 - 1993) + (164.6 + 164.6) * (1993 - 1654.2) + (164.6 + 410.5) * (1654.2 - 1654.2) * 0.5 * 0.00694$
BALCONY (Non-living area)	23	$-\left((824.3 + 824.3) * (1868.4 - 1922.9) + (824.3 + 763) * (1922.9 - 1922.9) + (763 + 763) * (1922.9 - 1868.4) + (763 + 824.3) * (1868.4 - 1868.4) * 0.5 * 0.00694$
BALCONY (Non-living area)	68	$-\left((759 + 759) * (1582.9 - 1654.2) + (759 + 621.8) * (1654.2 - 1654.2) + (621.8 + 621.8) * (1654.2 - 1582.9) + (621.8 + 759) * (1582.9 - 1582.9) * 0.5 * 0.00694$
BALCONY (Non-living area)	66	$-\left((410.5 + 410.5) * (1582.9 - 1654.2) + (410.5 + 278.1) * (1654.2 - 1654.2) + (278.1 + 278.1) * (1654.2 - 1582.9) + (278.1 + 410.5) * (1582.9 - 1582.9) * 0.5 * 0.00694$
OPEN TO BELOW (Non-living area)	47	$-\left((491.7 + 546.5) * (1868.4 - 1868.5) + (546.5 + 546.5) * (1868.5 - 1993) + (546.5 + 491.7) * (1993 - 1993) + (491.7 + 491.7) * (1993 - 1868.4) * 0.5 * 0.00694$
OPEN TO BELOW	340	$-\left((621.8 + 621.8) * (1568.4 - 1654.2) + (621.8 + 615.8) * (1654.2 - 1660.2) + (615.8 + 615.8) * (1660.2 - 1654.2) + (615.8 + 615.8) * (1654.2 - 1654.2) * 0.5 * 0.00694$

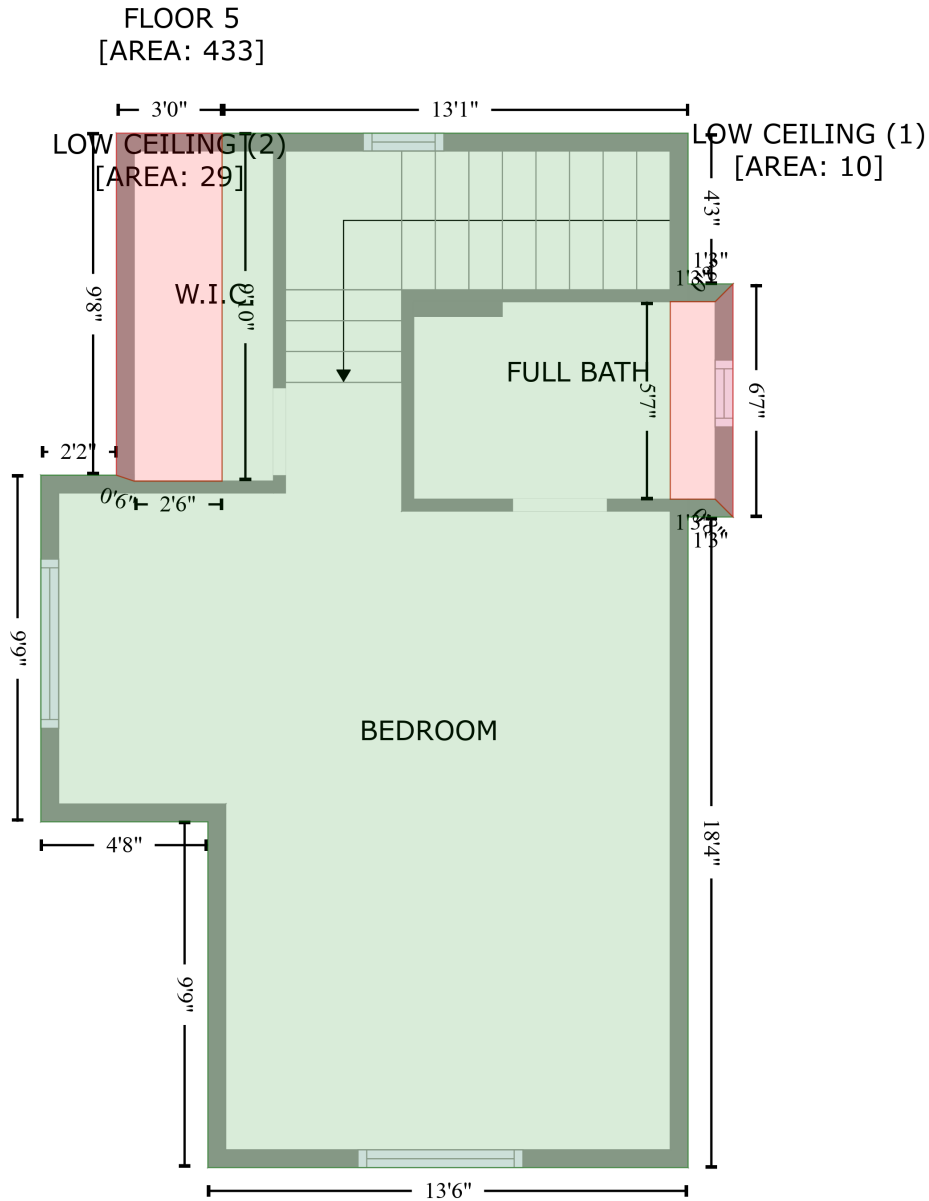
130 Talons Point Road, Seneca, Oconee County, South Carolina, United States, 29672

Gross Living Area: 3156 sq. ft

Space	Area (sq. ft)	Calculation <small>Coordinate Polygon Area Algorithm using inches</small>
(Non-living area)		$\begin{aligned} & (1660.2 - 1817.5) + (615.8 + 559.4) * (1817.5 - 1817.5) + (559.4 + 555) * (1817.5 - 1808.1) + \\ & (555 + 545.7) * (1808.1 - 1798.6) + (545.7 + 532.9) * (1798.6 - 1791.6) + (532.9 + 519.4) * \\ & (1791.6 - 1789.1) + (519.4 + 505) * (1789.1 - 1790.9) + (505 + 492.4) * (1790.9 - 1796.4) + \\ & (492.4 + 482.6) * (1796.4 - 1804.5) + (482.6 + 474.8) * (1804.5 - 1817.5) + (474.8 + 416.5) * \\ & (1817.5 - 1817.5) + (416.5 + 416.5) * (1817.5 - 1660.2) + (416.5 + 410.5) * (1660.2 - 1654.2) + \\ & (410.5 + 410.5) * (1654.2 - 1568.4) + (410.5 + 621.8) * (1568.4 - 1568.4) * 0.5 * 0.00694 \end{aligned}$

130 Talons Point Road, Seneca, Oconee County, South Carolina, United States, 29672

Gross Living Area: 3156 sq. ft



Space	Area (sq. ft)	Calculation <small>Coordinate Polygon Area Algorithm using inches</small>
FLOOR 5 (Living area)	433	$ \begin{aligned} & -((938.4 + 938.4) * (2210.9 - 2261.9) + (938.4 + 953.5) * (2261.9 - 2261.9) + (953.5 + 947.5) * \\ & (2261.9 - 2267.9) + (947.5 + 932.4) * (2267.9 - 2267.9) + (932.4 + 932.4) * (2267.9 - 2334.6) + \\ & (932.4 + 947.5) * (2334.6 - 2334.6) + (947.5 + 953.5) * (2334.6 - 2340.6) + (953.5 + 938.4) * \\ & (2340.6 - 2340.6) + (938.4 + 938.4) * (2340.6 - 2560.5) + (938.4 + 776.2) * (2560.5 - 2560.5) + \\ & (776.2 + 776.2) * (2560.5 - 2443.6) + (776.2 + 719.8) * (2443.6 - 2443.6) + (719.8 + 719.8) * \\ & (2443.6 - 2326.5) + (719.8 + 745.3) * (2326.5 - 2326.5) + (745.3 + 751.3) * (2326.5 - 2328.5) + \\ & (751.3 + 781) * (2328.5 - 2328.5) + (781 + 781) * (2328.5 - 2210.9) + (781 + 938.4) * (2210.9 - \end{aligned} $

130 Talons Point Road, Seneca, Oconee County, South Carolina, United States, 29672

Gross Living Area: 3156 sq. ft

Space	Area (sq. ft)	Calculation <small>Coordinate Polygon Area Algorithm using inches</small>
		$2210.9)) * 0.5 * 0.00694$
LOW CEILING (Non-living area)	10	$-((953.5 + 953.5) * (2261.9 - 2340.6) + (953.5 + 947.5) * (2340.6 - 2334.6) + (947.5 + 932.4) * (2334.6 - 2334.6) + (932.4 + 932.4) * (2334.6 - 2267.9) + (932.4 + 947.5) * (2267.9 - 2267.9) + (947.5 + 953.5) * (2267.9 - 2261.9)) * 0.5 * 0.00694$
LOW CEILING (Non-living area)	29	$-((781 + 781) * (2210.9 - 2328.5) + (781 + 751.3) * (2328.5 - 2328.5) + (751.3 + 745.3) * (2328.5 - 2326.5) + (745.3 + 745.3) * (2326.5 - 2210.9) + (745.3 + 781) * (2210.9 - 2210.9)) * 0.5 * 0.00694$