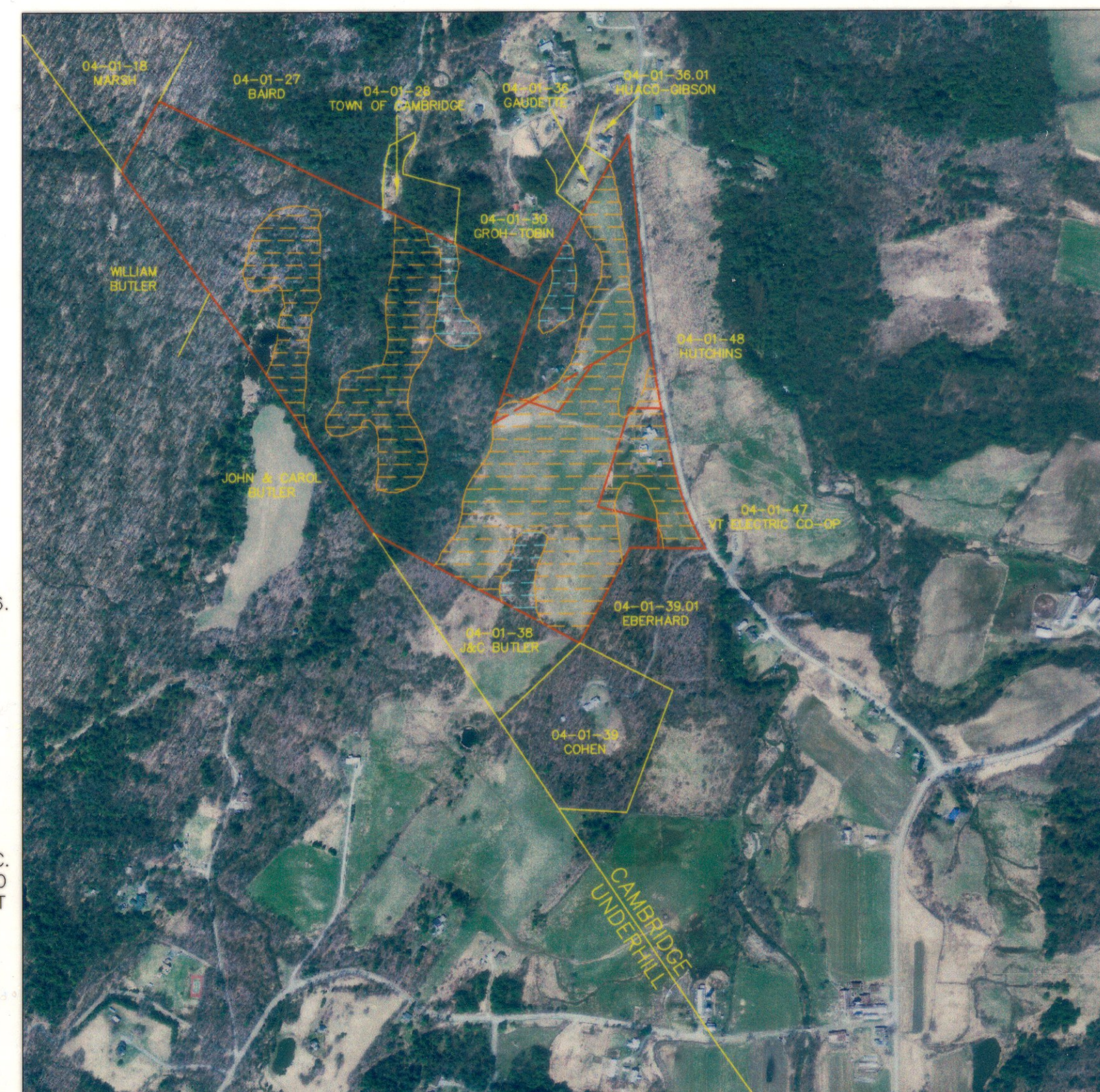
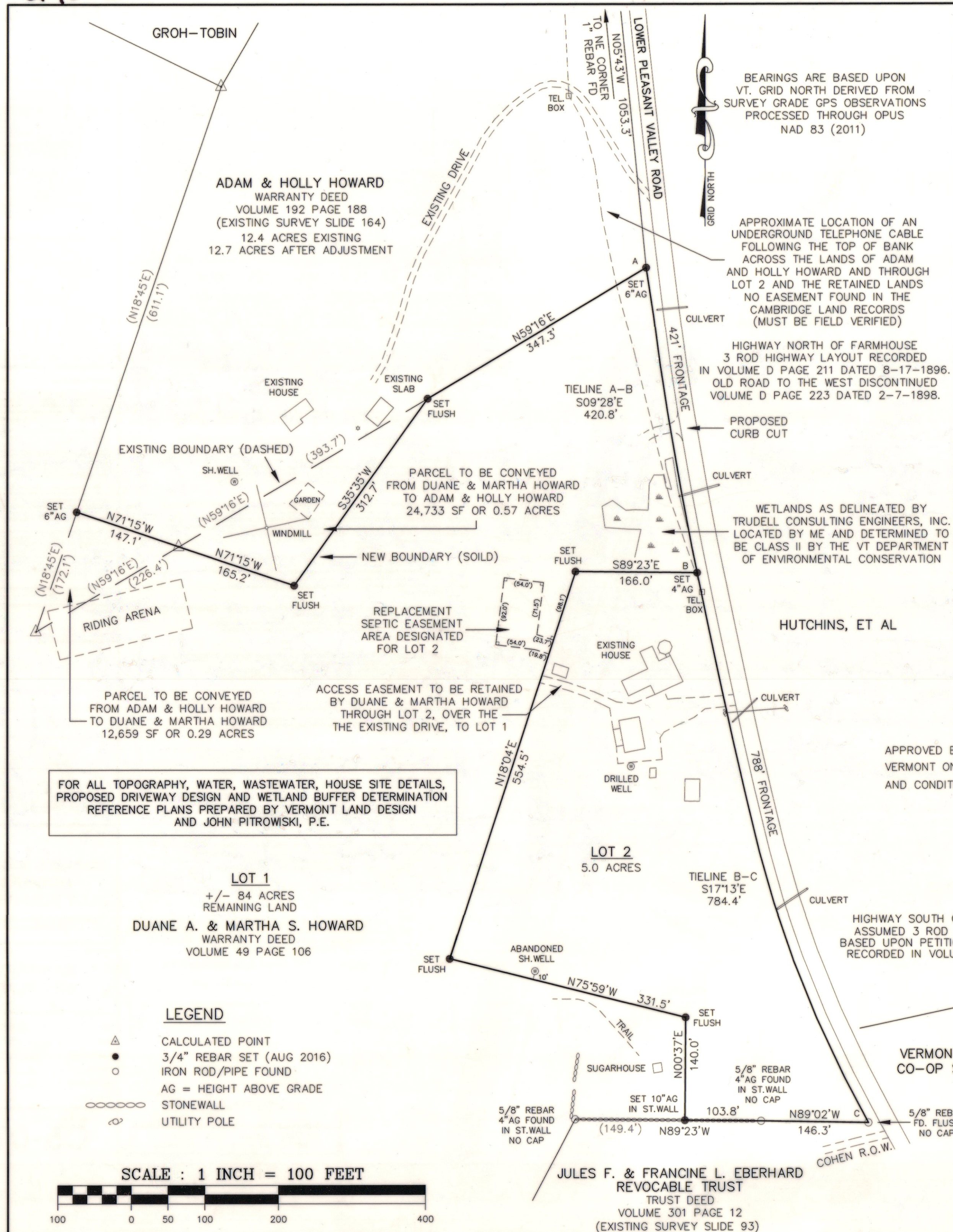


243 C

243 C



PRIME AGRICULTURE SOILS - STATEWIDE  
PRIME AGRICULTURE SOILS - PRIME(b)  
(BASED UPON THE VT A.N.R. ONLINE ATLAS)

SPRING 2013

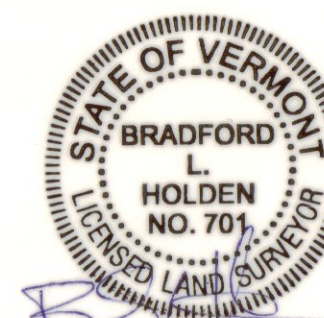
APPROVED BY RESOLUTION OF THE DEVELOPMENT REVIEW BOARD OF THE TOWN OF CAMBRIDGE,  
VERMONT ON THE 11<sup>th</sup> DAY OF July 2016, SUBJECT TO THE REQUIREMENTS  
AND CONDITIONS OF SAID RESOLUTION, SIGNED THIS 17<sup>th</sup> DAY OF August 2016.

BY, CHAIRPERSON OR CLERK

Canoll A. Petas 8/16/16  
(Interim) Admin. Officer

**FINAL PLAT**  
**TWO LOT SUBDIVISION &**  
**BOUNDARY LINE ADJUSTMENT**  
**FOR**  
**DUANE & MARTHA HOWARD**  
3308 LOWER PLEASANT VALLEY ROAD  
CAMBRIDGE, VERMONT  
JUNE 2016

PREPARED BY  
**BRADFORD L. HOLDEN**  
LAND SURVEYOR  
60 COVEY ROAD  
UNDERHILL, VERMONT



I CERTIFY THIS PLAT IS BASED UPON THE RECORD RESEARCH AND PRIOR SURVEYS  
REFERENCED ON THIS MAP. MEASUREMENTS ARE BASED UPON A TOTAL STATION  
SURVEY IN CONJUNCTION WITH SURVEY GRADE GPS OBSERVATIONS. NEW LOT AND THE  
BOUNDARY LINE ADJUSTMENT ARE BASED UPON INSTRUCTIONS GIVEN TO ME BY THE CLIENT.  
THIS PLAT CONFORMS TO VSA TITLE 27 SECTION 1403. PLAT PRODUCED WITH PIGMENT INK  
ON POLYESTER FILM.