



Total Area: 1487 sq. ft

Floor 1: 0 sq. ft, Floor 2: 0 sq. ft, Floor 3: 997 sq. ft, Floor 4: 0 sq. ft, Floor 5: 490 sq. ft
Excluded: Room 1060 sq. ft, Garage 1089 sq. ft, Utility 438 sq. ft, Outdoor Porch 155 sq. ft, Outdoor Deck 64 sq. ft, Low Ceiling 293 sq. ft, Attic 158 sq. ft, Outdoor Balcony 218 sq. ft, Walls: 332 sq. ft

Property summary



5
Floors



2
Bedrooms



2
Bathrooms

Home report



943 Pennsylvania Highway 66, Gilpin Township, Vandergrift, Armstrong County, Pennsylvania, United

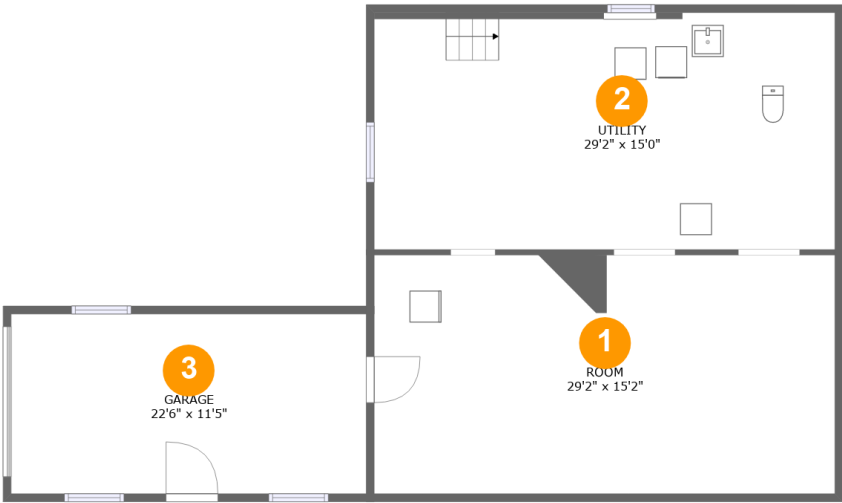


1
Half baths



2
Garages

943 Pennsylvania Highway 66, Gilpin Township,
Vandergrift, Armstrong County, Pennsylvania, United

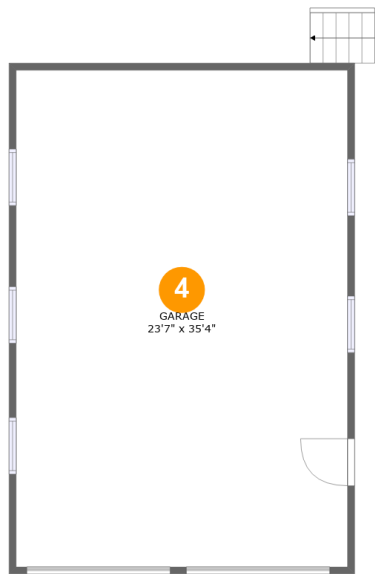


Room dimensions

Floor 1 Total:0sqft Excluded: 1146sqft

#		Max Dimensions	sqft	Included
1	Room	29'2" x 15'2"	442 sq. ft	No
2	Utility	29'2" x 15'0"	438 sq. ft	No
3	Garage	22'6" x 11'5"	256 sq. ft	No

943 Pennsylvania Highway 66, Gilpin Township,
Vandergrift, Armstrong County, Pennsylvania, United

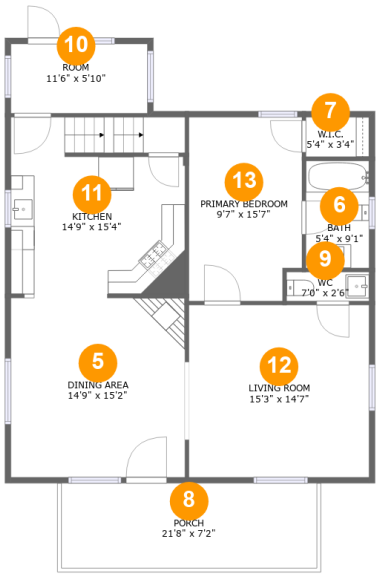


Room dimensions

Floor 2 Total:0sqft Excluded: 833sqft

#		Max Dimensions	sqft	Included
4	Garage	23'7" x 35'4"	833 sq. ft	No

943 Pennsylvania Highway 66, Gilpin Township,
Vandergrift, Armstrong County, Pennsylvania, United

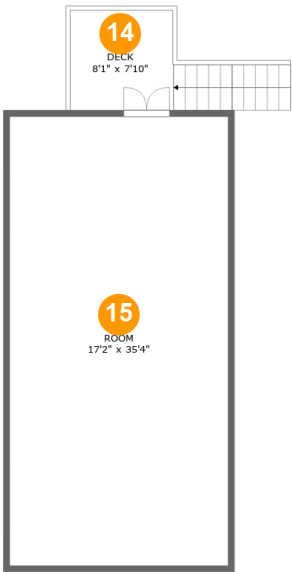


Room dimensions

Floor 3 Total:997sqft Excluded: 155sqft

#		Max Dimensions	sqft	Included
5	Dining Area	14'9" x 15'2"	224 sq. ft	Yes
6	Bath	5'4" x 9'1"	49 sq. ft	Yes
7	W.I.C.	5'4" x 3'4"	18 sq. ft	Yes
8	Porch	21'8" x 7'2"	155 sq. ft	No
9	WC	7'0" x 2'6"	17 sq. ft	Yes
10	Room	11'6" x 5'10"	68 sq. ft	Yes
11	Kitchen	14'9" x 15'4"	219 sq. ft	Yes
12	Living Room	15'3" x 14'7"	222 sq. ft	Yes
13	Primary Bedroom	9'7" x 15'7"	144 sq. ft	Yes

943 Pennsylvania Highway 66, Gilpin Township,
Vandergrift, Armstrong County, Pennsylvania, United

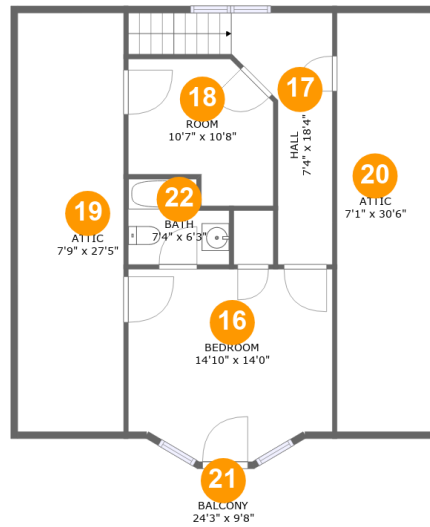


Room dimensions

Floor 4 Total:0sqft Excluded: 672sqft

#		Max Dimensions	sqft	Included
14	Deck	8'1" x 7'10"	64 sq. ft	No
15	Room	17'2" x 35'4"	608 sq. ft	No

943 Pennsylvania Highway 66, Gilpin Township, Vandergrift, Armstrong County, Pennsylvania, United



Room dimensions

Floor 5

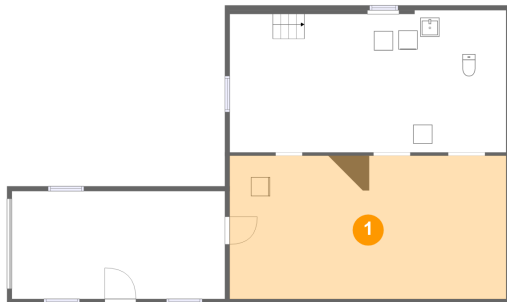
Total:490sqft

Excluded: 669sqft

#		Max Dimensions	sqft	Included
16	Bedroom	14'10" x 14'0"	192 sq. ft	Yes
17	Hall	7'4" x 18'4"	111 sq. ft	Yes
18	Room	10'7" x 10'8"	96 sq. ft	Yes
19	Attic	7'9" x 27'5"	83 sq. ft	No
20	Attic	7'1" x 30'6"	75 sq. ft	No
21	Balcony	24'3" x 9'8"	218 sq. ft	No
22	Bath	7'4" x 6'3"	40 sq. ft	Yes

**943 Pennsylvania Highway 66, Gilpin Township,
Vandergrift, Armstrong County, Pennsylvania, United**

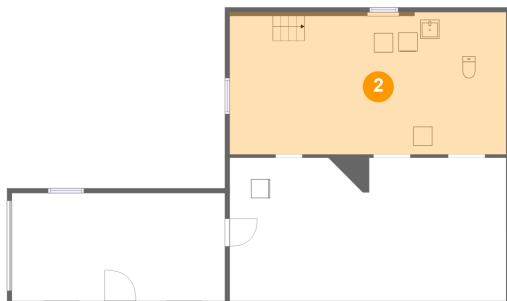
1 Floor 1 - Room



Max Dimensions: 29'2" x 15'2"
Calculated Area: 442 sq. ft
Included: No

Heated: Yes
Finished: No
Enclosed: Yes
Contiguous: Yes
Permitted: Yes
Wet space: No
Addition: No
Conversion: No

2 Floor 1 - Utility

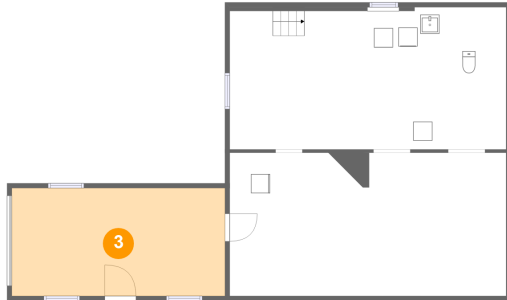


Max Dimensions: 29'2" x 15'0"
Calculated Area: 438 sq. ft
Included: No

Heated: Yes
Finished: No
Enclosed: Yes
Contiguous: Yes
Permitted: Yes
Wet space: No
Addition: No
Conversion: No

**943 Pennsylvania Highway 66, Gilpin Township,
Vandergrift, Armstrong County, Pennsylvania, United**

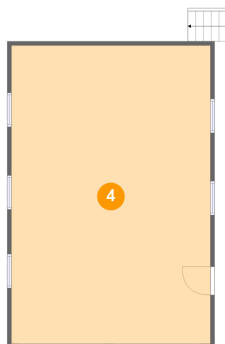
3 Floor 1 - Garage



Max Dimensions: 22'6" x 11'5"
Calculated Area: 256 sq. ft
Included: No

Heated: No
Finished: No
Enclosed: Yes
Contiguous: Yes
Permitted: Yes
Wet space: No
Addition: No
Conversion: No

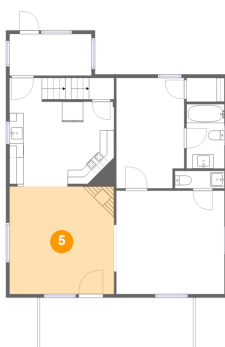
4 Floor 2 - Garage



Max Dimensions: 23'7" x 35'4"
Calculated Area: 833 sq. ft
Included: No

Heated: No
Finished: No
Enclosed: Yes
Contiguous: Yes
Permitted: Yes
Wet space: No
Addition: No
Conversion: No

5 Floor 3 - Dining Area

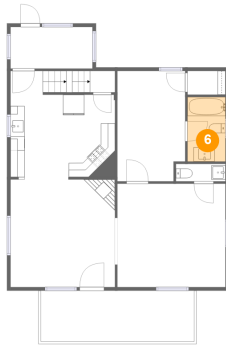


Max Dimensions: 14'9" x 15'2"
Calculated Area: 224 sq. ft
Included: Yes

Heated: Yes
Finished: Yes
Enclosed: Yes
Contiguous: Yes
Permitted: Yes
Wet space: No
Addition: No
Conversion: No

**943 Pennsylvania Highway 66, Gilpin Township,
Vandergrift, Armstrong County, Pennsylvania, United**

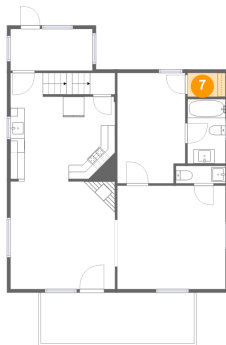
6 Floor 3 - Bath



Max Dimensions: 5'4" x 9'1"
Calculated Area: 49 sq. ft
Included: Yes

Heated: Yes
Finished: Yes
Enclosed: Yes
Contiguous: Yes
Permitted: Yes
Wet space: Yes
Addition: No
Conversion: No

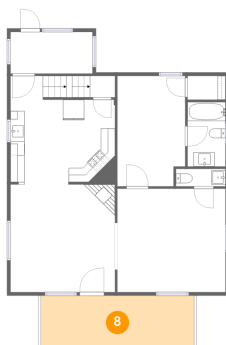
7 Floor 3 - W.I.C.



Max Dimensions: 5'4" x 3'4"
Calculated Area: 18 sq. ft
Included: Yes

Heated: Yes
Finished: Yes
Enclosed: Yes
Contiguous: Yes
Permitted: Yes
Wet space: No
Addition: No
Conversion: No

8 Floor 3 - Porch

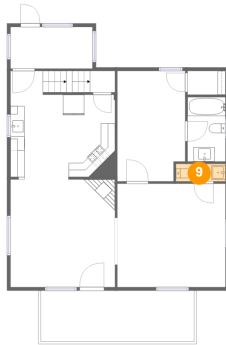


Max Dimensions: 21'8" x 7'2"
Calculated Area: 155 sq. ft
Included: No

Heated: No
Finished: Yes
Enclosed: No
Contiguous: Yes
Permitted: Yes
Wet space: No
Addition: No
Conversion: No

**943 Pennsylvania Highway 66, Gilpin Township,
Vandergrift, Armstrong County, Pennsylvania, United**

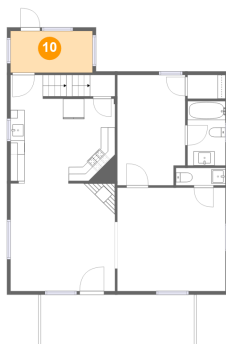
9 Floor 3 - WC



Max Dimensions: 7'0" x 2'6"
Calculated Area: 17 sq. ft
Included: Yes

Heated: Yes
Finished: Yes
Enclosed: Yes
Contiguous: Yes
Permitted: Yes
Wet space: No
Addition: No
Conversion: No

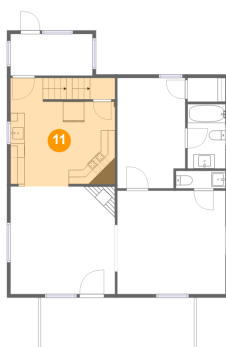
10 Floor 3 - Room



Max Dimensions: 11'6" x 5'10"
Calculated Area: 68 sq. ft
Included: Yes

Heated: Yes
Finished: Yes
Enclosed: Yes
Contiguous: Yes
Permitted: Yes
Wet space: No
Addition: No
Conversion: No

11 Floor 3 - Kitchen



Max Dimensions: 14'9" x 15'4"
Calculated Area: 219 sq. ft
Included: Yes

Heated: Yes
Finished: Yes
Enclosed: Yes
Contiguous: Yes
Permitted: Yes
Wet space: No
Addition: No
Conversion: No

**943 Pennsylvania Highway 66, Gilpin Township,
Vandergrift, Armstrong County, Pennsylvania, United**

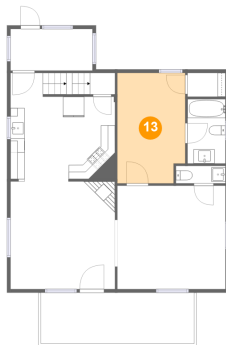
12 Floor 3 - Living Room



Max Dimensions: 15'3" x 14'7"
Calculated Area: 222 sq. ft
Included: Yes

Heated: Yes
Finished: Yes
Enclosed: Yes
Contiguous: Yes
Permitted: Yes
Wet space: No
Addition: No
Conversion: No

13 Floor 3 - Primary Bedroom



Max Dimensions: 9'7" x 15'7"
Calculated Area: 144 sq. ft
Included: Yes

Heated: Yes
Finished: Yes
Enclosed: Yes
Contiguous: Yes
Permitted: Yes
Wet space: No
Addition: No
Conversion: No

14 Floor 4 - Deck

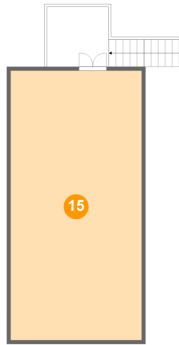


Max Dimensions: 8'1" x 7'10"
Calculated Area: 64 sq. ft
Included: No

Heated: No
Finished: Yes
Enclosed: No
Contiguous: Yes
Permitted: Yes
Wet space: No
Addition: No
Conversion: No

**943 Pennsylvania Highway 66, Gilpin Township,
Vandergrift, Armstrong County, Pennsylvania, United**

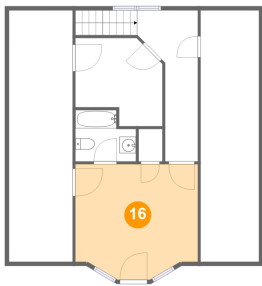
15 Floor 4 - Room



Max Dimensions: 17'2" x 35'4"
Calculated Area: 608 sq. ft
Included: No

Heated: Yes
Finished: No
Enclosed: Yes
Contiguous: Yes
Permitted: Yes
Wet space: No
Addition: No
Conversion: No

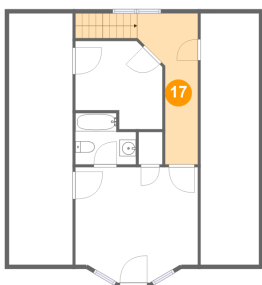
16 Floor 5 - Bedroom



Max Dimensions: 14'10" x 14'0"
Calculated Area: 192 sq. ft
Included: Yes

Heated: Yes
Finished: Yes
Enclosed: Yes
Contiguous: Yes
Permitted: Yes
Wet space: No
Addition: No
Conversion: No

17 Floor 5 - Hall

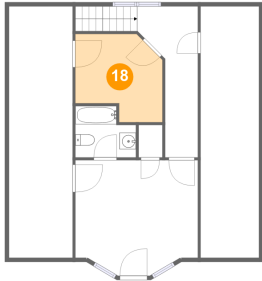


Max Dimensions: 7'4" x 18'4"
Calculated Area: 111 sq. ft
Included: Yes

Heated: Yes
Finished: Yes
Enclosed: Yes
Contiguous: Yes
Permitted: Yes
Wet space: No
Addition: No
Conversion: No

**943 Pennsylvania Highway 66, Gilpin Township,
Vandergrift, Armstrong County, Pennsylvania, United**

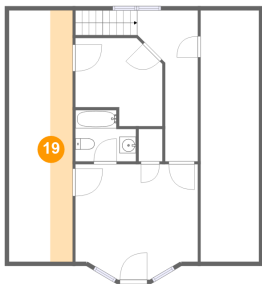
18 Floor 5 - Room



Max Dimensions: 10'7" x 10'8"
Calculated Area: 96 sq. ft
Included: Yes

Heated: Yes
Finished: Yes
Enclosed: Yes
Contiguous: Yes
Permitted: Yes
Wet space: No
Addition: No
Conversion: No

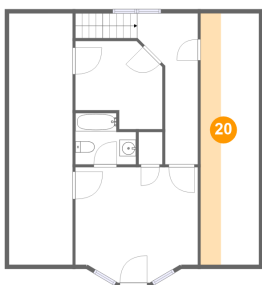
19 Floor 5 - Attic



Max Dimensions: 7'9" x 27'5"
Calculated Area: 83 sq. ft
Included: No

Heated: No
Finished: No
Enclosed: Yes
Contiguous: Yes
Permitted: Yes
Wet space: No
Addition: No
Conversion: No

20 Floor 5 - Attic

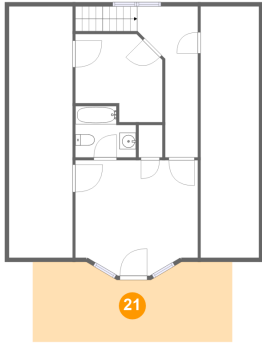


Max Dimensions: 7'1" x 30'6"
Calculated Area: 75 sq. ft
Included: No

Heated: No
Finished: No
Enclosed: Yes
Contiguous: Yes
Permitted: Yes
Wet space: No
Addition: No
Conversion: No

**943 Pennsylvania Highway 66, Gilpin Township,
Vandergrift, Armstrong County, Pennsylvania, United**

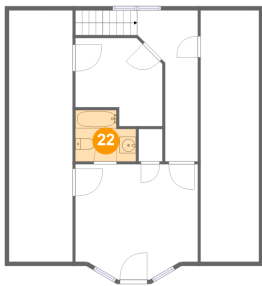
21 Floor 5 - Balcony



Max Dimensions: 24'3" x 9'8"
Calculated Area: 218 sq. ft
Included: No

Heated: No
Finished: Yes
Enclosed: No
Contiguous: Yes
Permitted: Yes
Wet space: No
Addition: No
Conversion: No

22 Floor 5 - Bath



Max Dimensions: 7'4" x 6'3"
Calculated Area: 40 sq. ft
Included: Yes

Heated: Yes
Finished: Yes
Enclosed: Yes
Contiguous: Yes
Permitted: Yes
Wet space: Yes
Addition: No
Conversion: No