



Home report


214 Bruce Cameron Drive, Bowmanville, Regional Municipality of Durham, Ontario, Canada, L1C 0W3, 214 bruce cameron drive




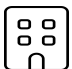
Property summary


 **1** Garages


 **4** Bedrooms

 **2** Bathrooms

 **1** Half baths

 **3** Floors

 **1,857** Gross living area sqft

 **2,947** Total sqft

Home report

214 Bruce Cameron Drive, Bowmanville, Regional Municipality of Durham, Ontario, Canada, L1C 0W3, 214 bruce cameron drive



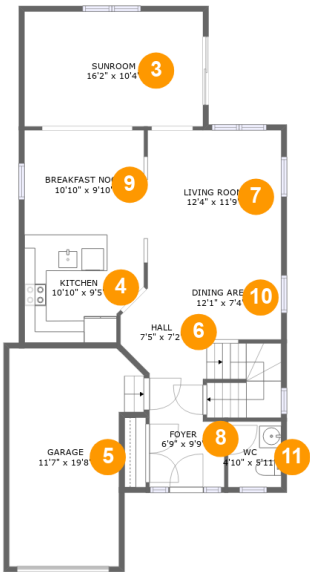
Room dimensions

Floor 1 Total sqft: 864 Living area: 0

#		Dimensions	sqft	Counted as living area
1	Laundry	14'2" x 6'4"	87 sq. ft	No
2	Basement	23'3" x 36'8"	703 sq. ft	No

Home report

214 Bruce Cameron Drive, Bowmanville, Regional Municipality of Durham, Ontario, Canada, L1C 0W3, 214 bruce cameron drive



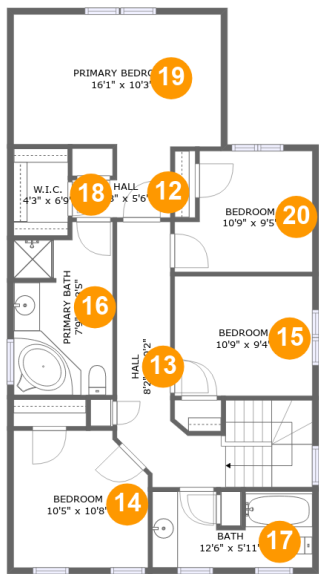
Room dimensions

Floor 2 Total sqft: 1090 Living area: 864

#		Dimensions	sqft	Counted as living area
3	Sunroom	16'2" x 10'4"	168 sq. ft	Yes
4	Kitchen	10'10" x 9'5"	92 sq. ft	Yes
5	Garage	11'7" x 19'8"	206 sq. ft	No
6	Hall	7'5" x 7'2"	87 sq. ft	Yes
7	Living Room	12'4" x 11'9"	145 sq. ft	Yes
8	Foyer	6'9" x 9'9"	59 sq. ft	Yes
9	Breakfast Nook	10'10" x 9'10"	106 sq. ft	Yes
10	Dining Area	12'1" x 7'4"	77 sq. ft	Yes
11	WC	4'10" x 5'11"	29 sq. ft	Yes

Home report

214 Bruce Cameron Drive, Bowmanville, Regional Municipality of Durham, Ontario, Canada, L1C 0W3, 214 bruce cameron drive

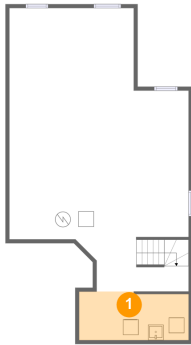


Room dimensions

Floor 3 Total sqft: 993 Living area: 993

#		Dimensions	sqft	Counted as living area
12	Hall	7'8" x 5'6"	33 sq. ft	Yes
13	Hall	8'2" x 20'2"	143 sq. ft	Yes
14	Bedroom	10'5" x 10'8"	106 sq. ft	Yes
15	Bedroom	10'9" x 9'4"	100 sq. ft	Yes
16	Primary Bath	7'9" x 13'5"	96 sq. ft	Yes
17	Bath	12'6" x 5'11"	67 sq. ft	Yes
18	W.I.C.	4'3" x 6'9"	29 sq. ft	Yes
19	Primary Bedroom	16'1" x 10'3"	165 sq. ft	Yes
20	Bedroom	10'9" x 9'5"	90 sq. ft	Yes

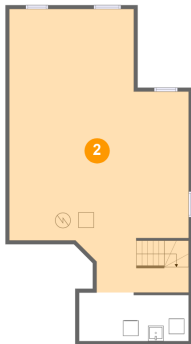
1 Floor 1 - Laundry



Dimensions: 14'2" x 6'4"
Area: 87 sq. ft
Counted as living area: No

Heated: Yes
Finished: Yes
Enclosed: Yes
Contiguous: No
Permitted: Yes
Wet space: No
Addition: No
Conversion: No

2 Floor 1 - Basement

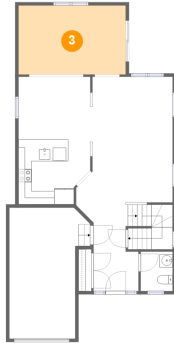


Dimensions: 23'3" x 36'8"
Area: 703 sq. ft
Counted as living area: No

Heated: Yes
Finished: No
Enclosed: Yes
Contiguous: Yes
Permitted: Yes
Wet space: No
Addition: No
Conversion: No

214 Bruce Cameron Drive, Bowmanville, Regional Municipality of Durham, Ontario, Canada, L1C 0W3, 214 bruce cameron drive

3 Floor 2 - Sunroom



Dimensions: 16'2" x 10'4"
Area: 168 sq. ft
Counted as living area: Yes

Heated: Yes
Finished: Yes
Enclosed: Yes
Contiguous: Yes
Permitted: Yes
Wet space: No
Addition: No
Conversion: No

4 Floor 2 - Kitchen



Dimensions: 10'10" x 9'5"
Area: 92 sq. ft
Counted as living area: Yes

Heated: Yes
Finished: Yes
Enclosed: Yes
Contiguous: Yes
Permitted: Yes
Wet space: No
Addition: No
Conversion: No

5 Floor 2 - Garage



Dimensions: 11'7" x 19'8"
Area: 206 sq. ft
Counted as living area: No

Heated: No
Finished: No
Enclosed: Yes
Contiguous: Yes
Permitted: Yes
Wet space: No
Addition: No
Conversion: No

214 Bruce Cameron Drive, Bowmanville, Regional Municipality of Durham, Ontario, Canada, L1C 0W3, 214 bruce cameron drive

6 Floor 2 - Hall



Dimensions: 7'5" x 7'2"
Area: 87 sq. ft
Counted as living area: Yes

Heated: Yes
Finished: Yes
Enclosed: Yes
Contiguous: Yes
Permitted: Yes
Wet space: No
Addition: No
Conversion: No

7 Floor 2 - Living Room



Dimensions: 12'4" x 11'9"
Area: 145 sq. ft
Counted as living area: Yes

Heated: Yes
Finished: Yes
Enclosed: Yes
Contiguous: Yes
Permitted: Yes
Wet space: No
Addition: No
Conversion: No

8 Floor 2 - Foyer



Dimensions: 6'9" x 9'9"
Area: 59 sq. ft
Counted as living area: Yes

Heated: Yes
Finished: Yes
Enclosed: Yes
Contiguous: Yes
Permitted: Yes
Wet space: No
Addition: No
Conversion: No

214 Bruce Cameron Drive, Bowmanville, Regional Municipality of Durham, Ontario, Canada, L1C 0W3, 214 bruce cameron drive

9 Floor 2 - Breakfast Nook



Dimensions: 10'10" x 9'10"
Area: 106 sq. ft
Counted as living area: Yes

Heated: Yes
Finished: Yes
Enclosed: Yes
Contiguous: Yes
Permitted: Yes
Wet space: No
Addition: No
Conversion: No

10 Floor 2 - Dining Area



Dimensions: 12'1" x 7'4"
Area: 77 sq. ft
Counted as living area: Yes

Heated: Yes
Finished: Yes
Enclosed: Yes
Contiguous: Yes
Permitted: Yes
Wet space: No
Addition: No
Conversion: No

11 Floor 2 - WC



Dimensions: 4'10" x 5'11"
Area: 29 sq. ft
Counted as living area: Yes

Heated: Yes
Finished: Yes
Enclosed: Yes
Contiguous: Yes
Permitted: Yes
Wet space: Yes
Addition: No
Conversion: No

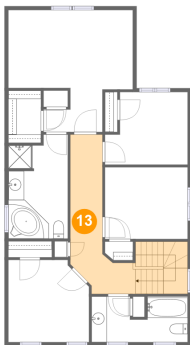
12 Floor 3 - Hall



Dimensions: 7'8" x 5'6"
Area: 33 sq. ft
Counted as living area: Yes

Heated: Yes
Finished: Yes
Enclosed: Yes
Contiguous: Yes
Permitted: Yes
Wet space: No
Addition: No
Conversion: No

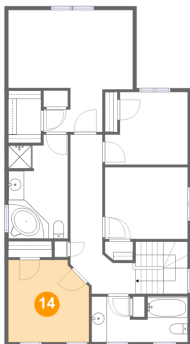
13 Floor 3 - Hall



Dimensions: 8'2" x 20'2"
Area: 143 sq. ft
Counted as living area: Yes

Heated: Yes
Finished: Yes
Enclosed: Yes
Contiguous: Yes
Permitted: Yes
Wet space: No
Addition: No
Conversion: No

14 Floor 3 - Bedroom



Dimensions: 10'5" x 10'8"
Area: 106 sq. ft
Counted as living area: Yes

Heated: Yes
Finished: Yes
Enclosed: Yes
Contiguous: Yes
Permitted: Yes
Wet space: No
Addition: No
Conversion: No

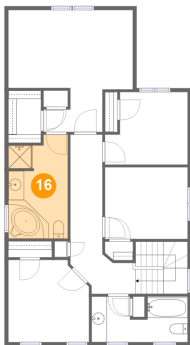
15 Floor 3 - Bedroom



Dimensions: 10'9" x 9'4"
Area: 100 sq. ft
Counted as living area: Yes

Heated: Yes
Finished: Yes
Enclosed: Yes
Contiguous: Yes
Permitted: Yes
Wet space: No
Addition: No
Conversion: No

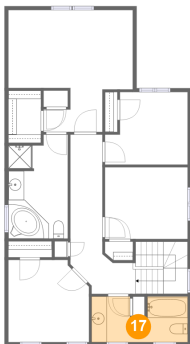
16 Floor 3 - Primary Bath



Dimensions: 7'9" x 13'5"
Area: 96 sq. ft
Counted as living area: Yes

Heated: Yes
Finished: Yes
Enclosed: Yes
Contiguous: Yes
Permitted: Yes
Wet space: Yes
Addition: No
Conversion: No

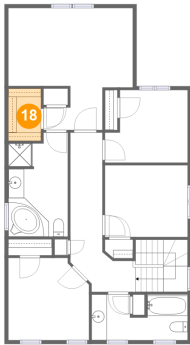
17 Floor 3 - Bath



Dimensions: 12'6" x 5'11"
Area: 67 sq. ft
Counted as living area: Yes

Heated: Yes
Finished: Yes
Enclosed: Yes
Contiguous: Yes
Permitted: Yes
Wet space: Yes
Addition: No
Conversion: No

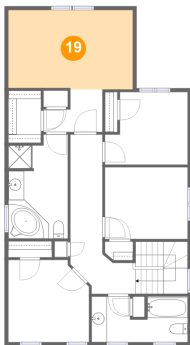
18 Floor 3 - W.I.C.



Dimensions: 4'3" x 6'9"
Area: 29 sq. ft
Counted as living area: Yes

Heated: Yes
Finished: Yes
Enclosed: Yes
Contiguous: Yes
Permitted: Yes
Wet space: No
Addition: No
Conversion: No

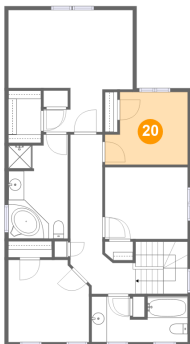
19 Floor 3 - Primary Bedroom



Dimensions: 16'1" x 10'3"
Area: 165 sq. ft
Counted as living area: Yes

Heated: Yes
Finished: Yes
Enclosed: Yes
Contiguous: Yes
Permitted: Yes
Wet space: No
Addition: No
Conversion: No

20 Floor 3 - Bedroom



Dimensions: 10'9" x 9'5"
Area: 90 sq. ft
Counted as living area: Yes

Heated: Yes
Finished: Yes
Enclosed: Yes
Contiguous: Yes
Permitted: Yes
Wet space: No
Addition: No
Conversion: No