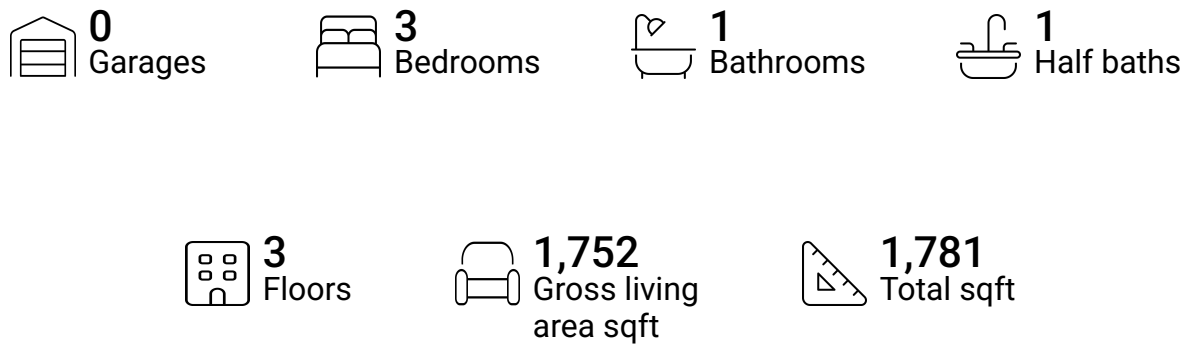


Home report

144 Maplewood Lane, Maytown, Lancaster County,
Pennsylvania, United States, 17550

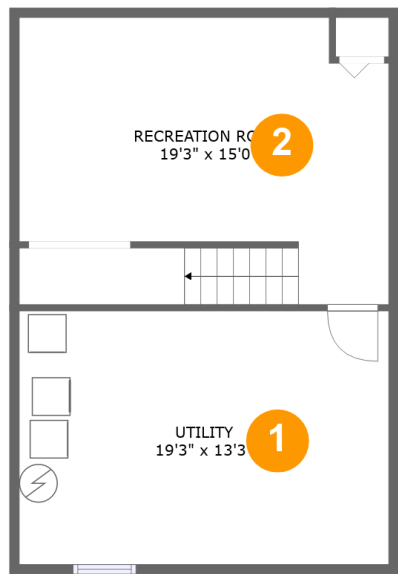


Property summary



Home report

144 Maplewood Lane, Maytown, Lancaster County,
Pennsylvania, United States, 17550



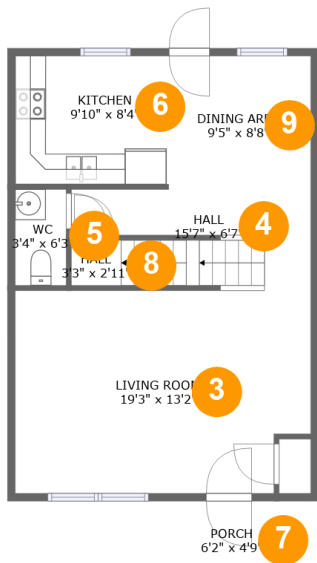
Room dimensions

Floor 1 Total sqft: 584 Living area: 584

#		Dimensions	sqft	Counted as living area
1	Utility	19'3" x 13'3"	255 sq. ft	Yes
2	Recreation Room	19'3" x 15'0"	276 sq. ft	Yes

Home report

144 Maplewood Lane, Maytown, Lancaster County,
Pennsylvania, United States, 17550



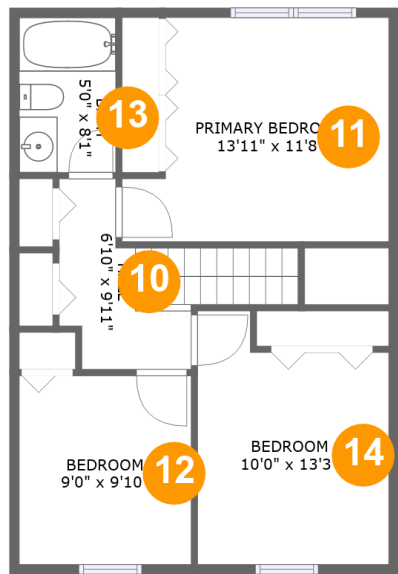
Room dimensions

Floor 2 Total sqft: 613 Living area: 584

#		Dimensions	sqft	Counted as living area
3	Living Room	19'3" x 13'2"	245 sq. ft	Yes
4	Hall	15'7" x 6'7"	74 sq. ft	Yes
5	WC	3'4" x 6'3"	21 sq. ft	Yes
6	Kitchen	9'10" x 8'4"	82 sq. ft	Yes
7	Porch	6'2" x 4'9"	29 sq. ft	No
8	Hall	3'3" x 2'11"	22 sq. ft	Yes
9	Dining Area	9'5" x 8'8"	82 sq. ft	Yes

Home report

144 Maplewood Lane, Maytown, Lancaster County,
Pennsylvania, United States, 17550

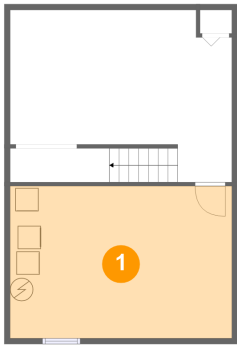


Room dimensions

Floor 3 Total sqft: 584 Living area: 584

#		Dimensions	sqft	Counted as living area
10	Hall	6'10" x 9'11"	68 sq. ft	Yes
11	Primary Bedroom	13'11" x 11'8"	143 sq. ft	Yes
12	Bedroom	9'0" x 9'10"	88 sq. ft	Yes
13	Bath	5'0" x 8'1"	41 sq. ft	Yes
14	Bedroom	10'0" x 13'3"	116 sq. ft	Yes

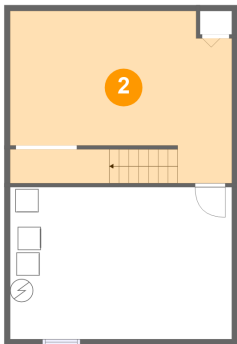
1 Floor 1 - Utility



Dimensions: 19'3" x 13'3"
Area: 255 sq. ft
Counted as living area: Yes

Heated: Yes
Finished: Yes
Enclosed: Yes
Contiguous: Yes
Permitted: Yes
Wet space: No
Addition: No
Conversion: No

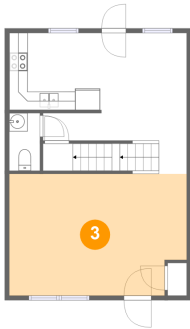
2 Floor 1 - Recreation Room



Dimensions: 19'3" x 15'0"
Area: 276 sq. ft
Counted as living area: Yes

Heated: Yes
Finished: Yes
Enclosed: Yes
Contiguous: Yes
Permitted: Yes
Wet space: No
Addition: No
Conversion: No

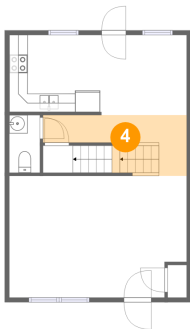
3 Floor 2 - Living Room



Dimensions: 19'3" x 13'2"
Area: 245 sq. ft
Counted as living area: Yes

Heated: Yes
Finished: Yes
Enclosed: Yes
Contiguous: Yes
Permitted: Yes
Wet space: No
Addition: No
Conversion: No

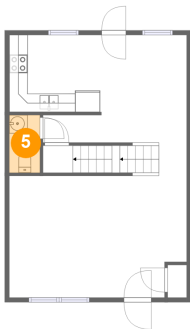
4 Floor 2 - Hall



Dimensions: 15'7" x 6'7"
Area: 74 sq. ft
Counted as living area: Yes

Heated: Yes
Finished: Yes
Enclosed: Yes
Contiguous: Yes
Permitted: Yes
Wet space: No
Addition: No
Conversion: No

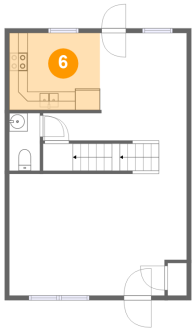
5 Floor 2 - WC



Dimensions: 3'4" x 6'3"
Area: 21 sq. ft
Counted as living area: Yes

Heated: Yes
Finished: Yes
Enclosed: Yes
Contiguous: Yes
Permitted: Yes
Wet space: Yes
Addition: No
Conversion: No

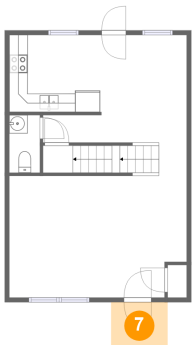
6 Floor 2 - Kitchen



Dimensions: 9'10" x 8'4"
Area: 82 sq. ft
Counted as living area: Yes

Heated: Yes
Finished: Yes
Enclosed: Yes
Contiguous: Yes
Permitted: Yes
Wet space: No
Addition: No
Conversion: No

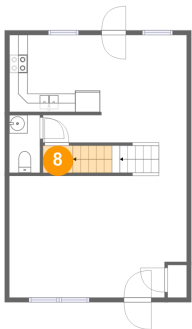
7 Floor 2 - Porch



Dimensions: 6'2" x 4'9"
Area: 29 sq. ft
Counted as living area: No

Heated: No
Finished: Yes
Enclosed: No
Contiguous: Yes
Permitted: Yes
Wet space: No
Addition: No
Conversion: No

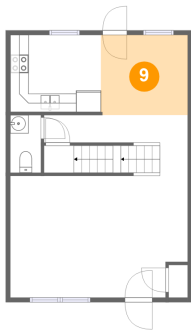
8 Floor 2 - Hall



Dimensions: 3'3" x 2'11"
Area: 22 sq. ft
Counted as living area: Yes

Heated: Yes
Finished: Yes
Enclosed: Yes
Contiguous: Yes
Permitted: Yes
Wet space: No
Addition: No
Conversion: No

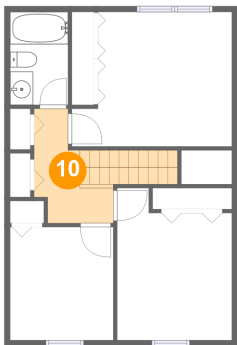
9 Floor 2 - Dining Area



Dimensions: 9'5" x 8'8"
Area: 82 sq. ft
Counted as living area: Yes

Heated: Yes
Finished: Yes
Enclosed: Yes
Contiguous: Yes
Permitted: Yes
Wet space: No
Addition: No
Conversion: No

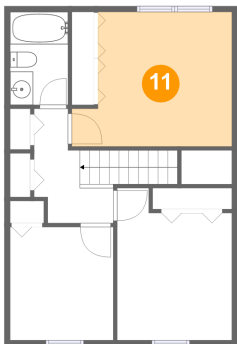
10 Floor 3 - Hall



Dimensions: 6'10" x 9'11"
Area: 68 sq. ft
Counted as living area: Yes

Heated: Yes
Finished: Yes
Enclosed: Yes
Contiguous: Yes
Permitted: Yes
Wet space: No
Addition: No
Conversion: No

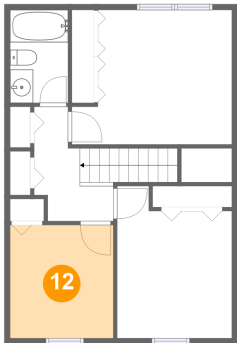
11 Floor 3 - Primary Bedroom



Dimensions: 13'11" x 11'8"
Area: 143 sq. ft
Counted as living area: Yes

Heated: Yes
Finished: Yes
Enclosed: Yes
Contiguous: Yes
Permitted: Yes
Wet space: No
Addition: No
Conversion: No

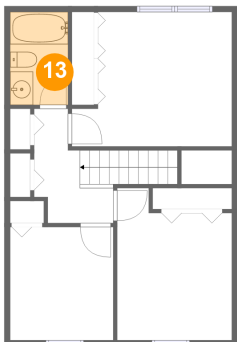
12 Floor 3 - Bedroom



Dimensions: 9'0" x 9'10"
Area: 88 sq. ft
Counted as living area: Yes

Heated: Yes
Finished: Yes
Enclosed: Yes
Contiguous: Yes
Permitted: Yes
Wet space: No
Addition: No
Conversion: No

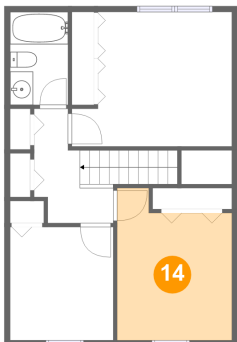
13 Floor 3 - Bath



Dimensions: 5'0" x 8'1"
Area: 41 sq. ft
Counted as living area: Yes

Heated: Yes
Finished: Yes
Enclosed: Yes
Contiguous: Yes
Permitted: Yes
Wet space: Yes
Addition: No
Conversion: No

14 Floor 3 - Bedroom



Dimensions: 10'0" x 13'3"
Area: 116 sq. ft
Counted as living area: Yes

Heated: Yes
Finished: Yes
Enclosed: Yes
Contiguous: Yes
Permitted: Yes
Wet space: No
Addition: No
Conversion: No