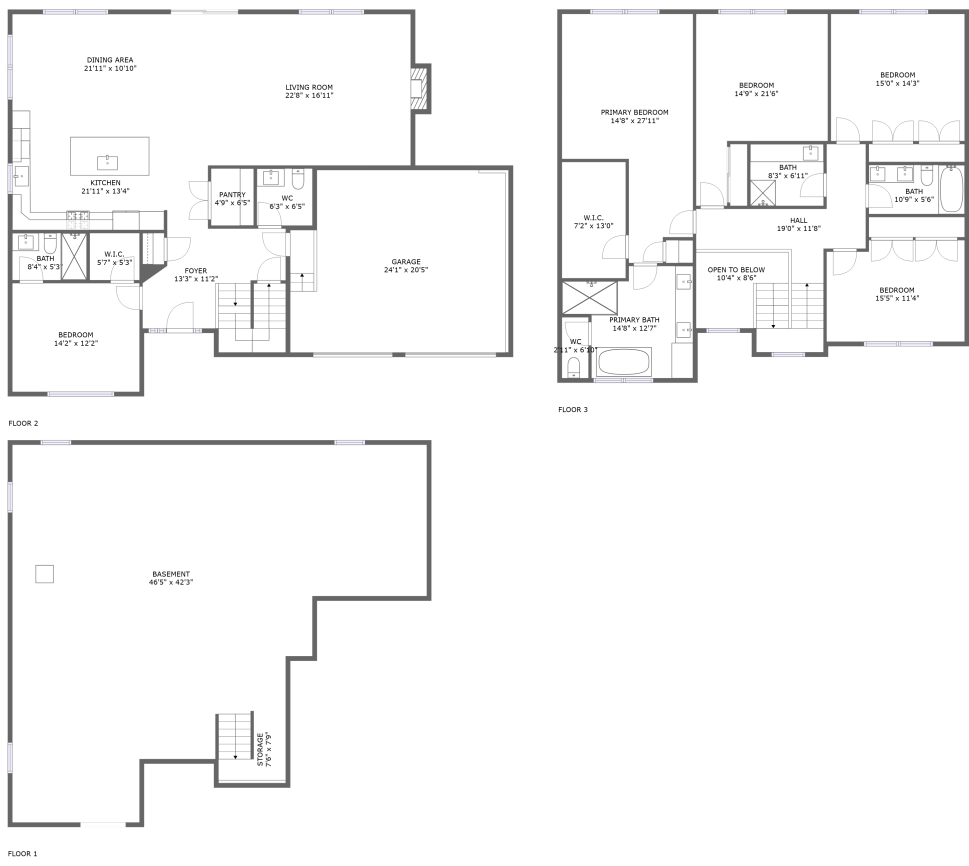


Home report

113 Elizabeth Avenue, Brick, Ocean County, New Jersey, United States, 08724



Total Area: 3103 sq. ft

Below Ground: 0 sq. ft, Floor 2: 1458 sq. ft, Floor 3: 1645 sq. ft

Excluded: Storage 41 sq. ft, Basement 1445 sq. ft, Garage 479 sq. ft, Fireplace 10 sq. ft, Open to below 68 sq. ft, Walls: 296 sq. ft

Property summary

 **3** Floors

 **5** Bedrooms

 **3** Bathrooms

Home report

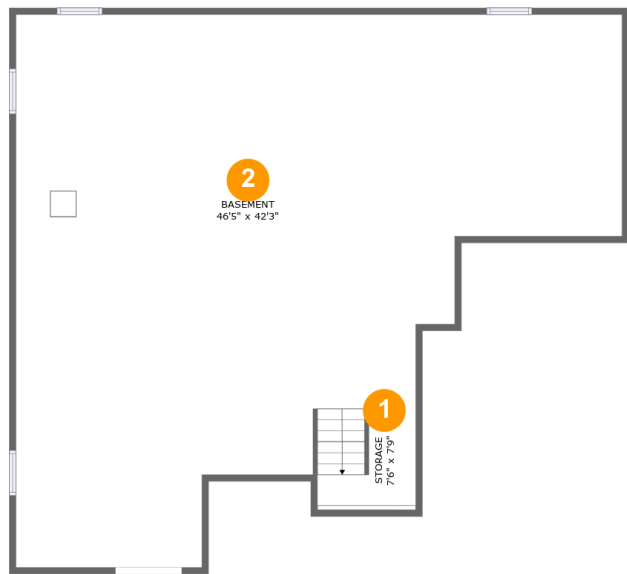
113 Elizabeth Avenue, Brick, Ocean County, New Jersey, United States, 08724

 **2**
Half baths

 **1**
Garages

Home report

113 Elizabeth Avenue, Brick, Ocean County, New Jersey, United States, 08724



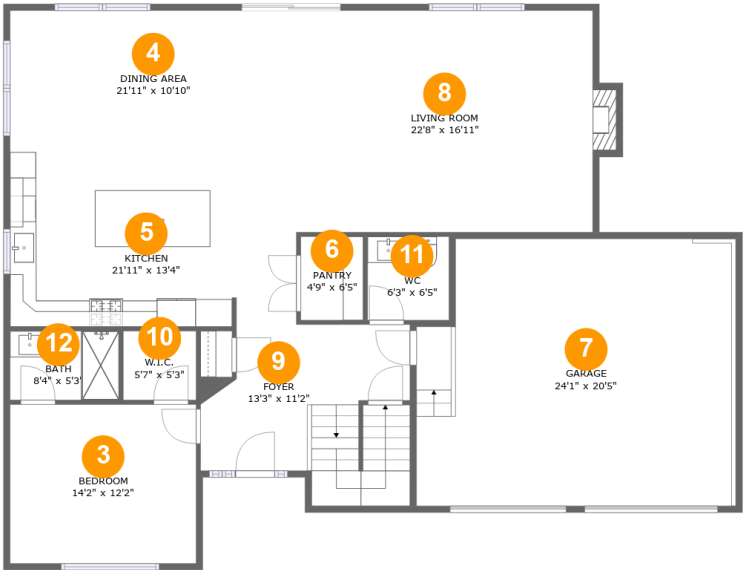
Room dimensions

Floor 1 Below ground Total:0sqft Excluded: 1486sqft

#		Max Dimensions	sqft	Included
1	Storage	7'6" x 7'9"	40 sq. ft	No
2	Basement	46'5" x 42'3"	1443 sq. ft	No

Home report

113 Elizabeth Avenue, Brick, Ocean County, New Jersey, United States, 08724



Room dimensions

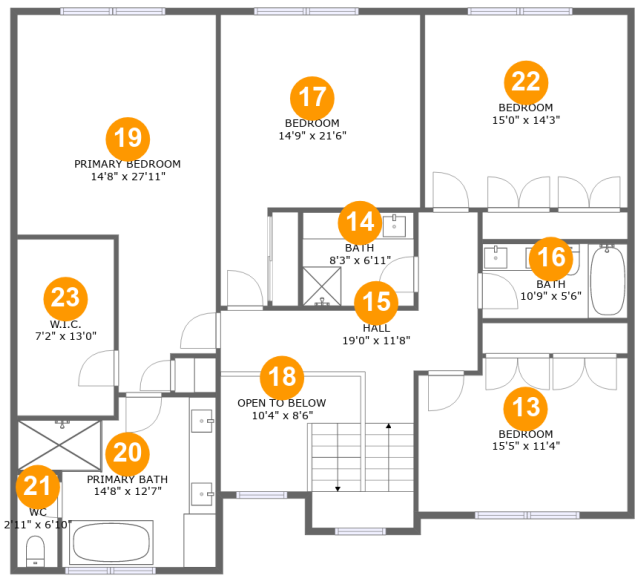
Floor 2

Total:1458sqft Excluded: 489sqft

#		Max Dimensions	sqft	Included
3	Bedroom	14'2" x 12'2"	173 sq. ft	Yes
4	Dining Area	21'11" x 10'10"	237 sq. ft	Yes
5	Kitchen	21'11" x 13'4"	292 sq. ft	Yes
6	Pantry	4'9" x 6'5"	31 sq. ft	Yes
7	Garage	24'1" x 20'5"	479 sq. ft	No
8	Living Room	22'8" x 16'11"	393 sq. ft	Yes
9	Foyer	13'3" x 11'2"	182 sq. ft	Yes
10	W.I.C.	5'7" x 5'3"	29 sq. ft	Yes
11	WC	6'3" x 6'5"	40 sq. ft	Yes
12	Bath	8'4" x 5'3"	44 sq. ft	Yes

Home report

113 Elizabeth Avenue, Brick, Ocean County, New Jersey, United States, 08724



Room dimensions

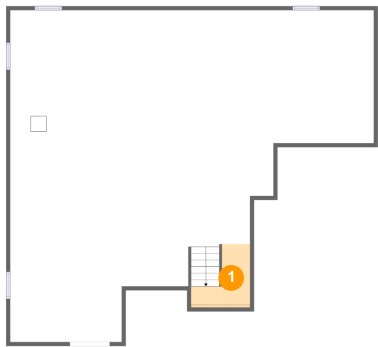
Floor 3

Total:1645sqft

Excluded: 68sqft

#		Max Dimensions	sqft	Included
13	Bedroom	15'5" x 11'4"	170 sq. ft	Yes
14	Bath	8'3" x 6'11"	57 sq. ft	Yes
15	Hall	19'0" x 11'8"	196 sq. ft	Yes
16	Bath	10'9" x 5'6"	59 sq. ft	Yes
17	Bedroom	14'9" x 21'6"	235 sq. ft	Yes
18	Open To Below	10'4" x 8'6"	68 sq. ft	No
19	Primary Bedroom	14'8" x 27'11"	313 sq. ft	Yes
20	Primary Bath	14'8" x 12'7"	148 sq. ft	Yes
21	WC	2'11" x 6'10"	20 sq. ft	Yes
22	Bedroom	15'0" x 14'3"	213 sq. ft	Yes
23	W.I.C.	7'2" x 13'0"	93 sq. ft	Yes

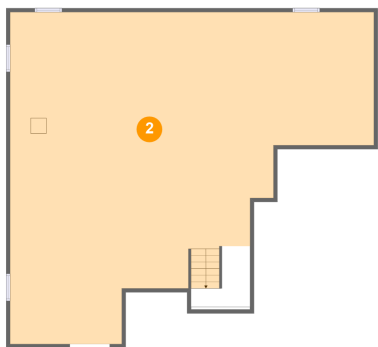
1 Floor 1 - Storage



Max Dimensions: 7'6" x 7'9"
Calculated Area: 40 sq. ft
Included: No

Heated: No
Finished: No
Enclosed: No
Contiguous: Yes
Permitted: Yes
Wet space: No
Addition: No
Conversion: No

2 Floor 1 - Basement

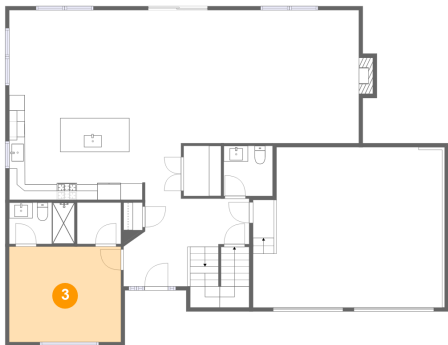


Max Dimensions: 46'5" x 42'3"
Calculated Area: 1443 sq. ft
Included: No

Heated: Yes
Finished: No
Enclosed: Yes
Contiguous: Yes
Permitted: Yes
Wet space: No
Addition: No
Conversion: No

113 Elizabeth Avenue, Brick, Ocean County, New Jersey, United States, 08724

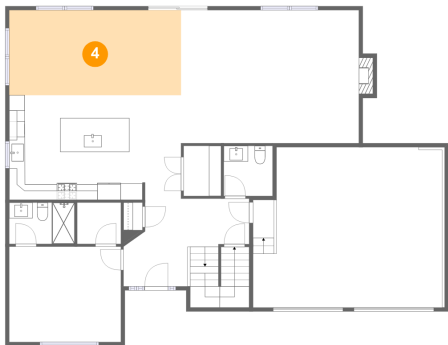
3 Floor 2 - Bedroom



Max Dimensions: 14'2" x 12'2"
Calculated Area: 173 sq. ft
Included: Yes

Heated: Yes
Finished: Yes
Enclosed: Yes
Contiguous: Yes
Permitted: Yes
Wet space: No
Addition: No
Conversion: No

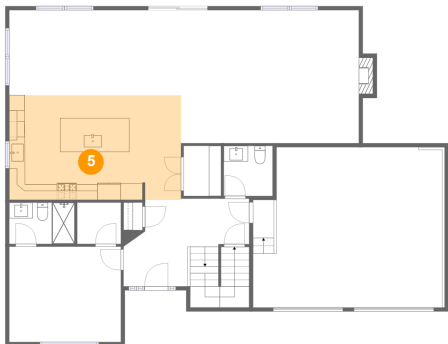
4 Floor 2 - Dining Area



Max Dimensions: 21'11" x 10'10"
Calculated Area: 237 sq. ft
Included: Yes

Heated: Yes
Finished: Yes
Enclosed: Yes
Contiguous: Yes
Permitted: Yes
Wet space: No
Addition: No
Conversion: No

5 Floor 2 - Kitchen

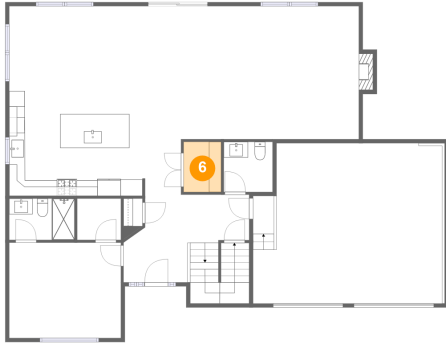


Max Dimensions: 21'11" x 13'4"
Calculated Area: 292 sq. ft
Included: Yes

Heated: Yes
Finished: Yes
Enclosed: Yes
Contiguous: Yes
Permitted: Yes
Wet space: No
Addition: No
Conversion: No

113 Elizabeth Avenue, Brick, Ocean County, New Jersey, United States, 08724

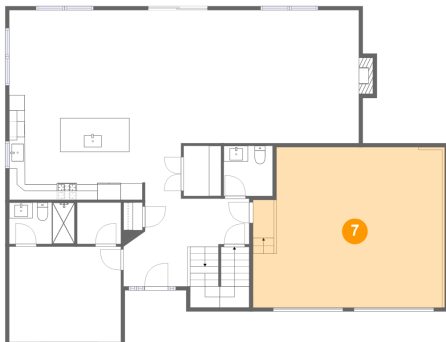
6 Floor 2 - Pantry



Max Dimensions: 4'9" x 6'5"
Calculated Area: 31 sq. ft
Included: Yes

Heated: Yes
Finished: Yes
Enclosed: Yes
Contiguous: Yes
Permitted: Yes
Wet space: No
Addition: No
Conversion: No

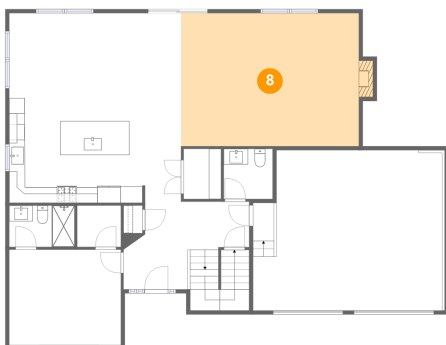
7 Floor 2 - Garage



Max Dimensions: 24'1" x 20'5"
Calculated Area: 479 sq. ft
Included: No

Heated: No
Finished: No
Enclosed: Yes
Contiguous: Yes
Permitted: Yes
Wet space: No
Addition: No
Conversion: No

8 Floor 2 - Living Room



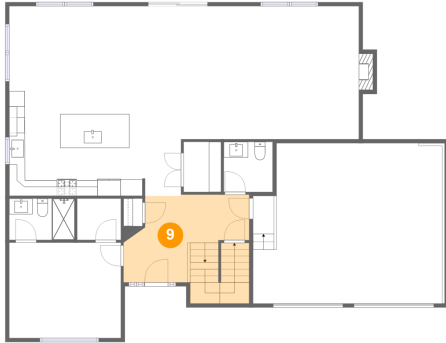
Max Dimensions: 22'8" x 16'11"
Calculated Area: 393 sq. ft
Included: Yes

Heated: Yes
Finished: Yes
Enclosed: Yes
Contiguous: Yes
Permitted: Yes
Wet space: No
Addition: No
Conversion: No

Home report

113 Elizabeth Avenue, Brick, Ocean County, New Jersey, United States, 08724

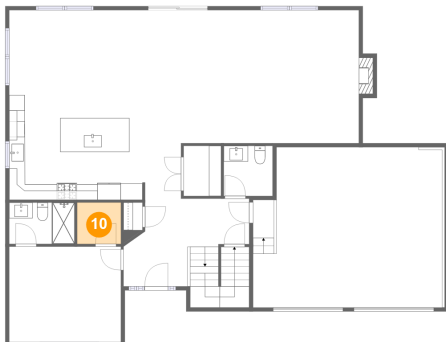
9 Floor 2 - Foyer



Max Dimensions: 13'3" x 11'2"
Calculated Area: 182 sq. ft
Included: Yes

Heated: Yes
Finished: Yes
Enclosed: Yes
Contiguous: Yes
Permitted: Yes
Wet space: No
Addition: No
Conversion: No

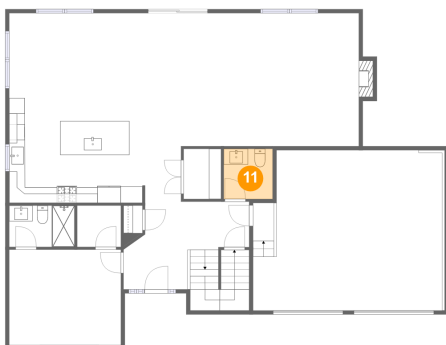
10 Floor 2 - W.I.C.



Max Dimensions: 5'7" x 5'3"
Calculated Area: 29 sq. ft
Included: Yes

Heated: Yes
Finished: Yes
Enclosed: Yes
Contiguous: Yes
Permitted: Yes
Wet space: No
Addition: No
Conversion: No

11 Floor 2 - WC



Max Dimensions: 6'3" x 6'5"
Calculated Area: 40 sq. ft
Included: Yes

Heated: Yes
Finished: Yes
Enclosed: Yes
Contiguous: Yes
Permitted: Yes
Wet space: Yes
Addition: No
Conversion: No

Home report

113 Elizabeth Avenue, Brick, Ocean County, New Jersey, United States, 08724

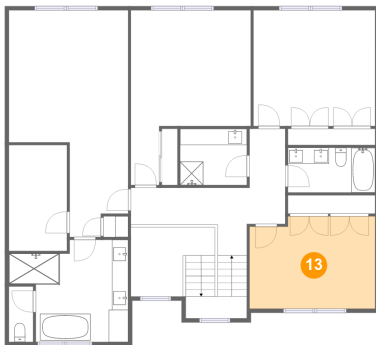
12 Floor 2 - Bath



Max Dimensions: 8'4" x 5'3"
Calculated Area: 44 sq. ft
Included: Yes

Heated: Yes
Finished: Yes
Enclosed: Yes
Contiguous: Yes
Permitted: Yes
Wet space: Yes
Addition: No
Conversion: No

13 Floor 3 - Bedroom



Max Dimensions: 15'5" x 11'4"
Calculated Area: 170 sq. ft
Included: Yes

Heated: Yes
Finished: Yes
Enclosed: Yes
Contiguous: Yes
Permitted: Yes
Wet space: No
Addition: No
Conversion: No

14 Floor 3 - Bath

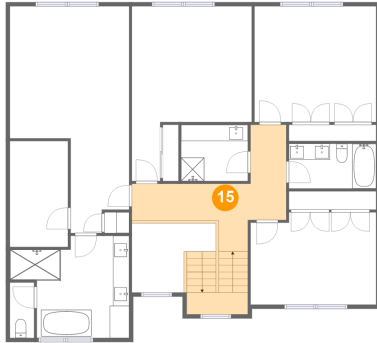


Max Dimensions: 8'3" x 6'11"
Calculated Area: 57 sq. ft
Included: Yes

Heated: Yes
Finished: Yes
Enclosed: Yes
Contiguous: Yes
Permitted: Yes
Wet space: Yes
Addition: No
Conversion: No

113 Elizabeth Avenue, Brick, Ocean County, New Jersey, United States, 08724

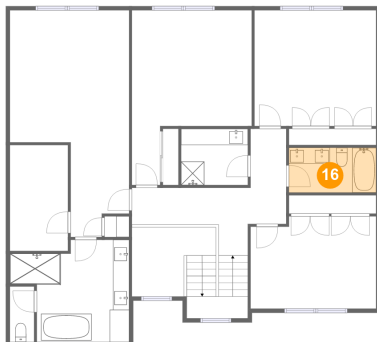
15 Floor 3 - Hall



Max Dimensions: 19'0" x 11'8"
Calculated Area: 196 sq. ft
Included: Yes

Heated: Yes
Finished: Yes
Enclosed: Yes
Contiguous: Yes
Permitted: Yes
Wet space: No
Addition: No
Conversion: No

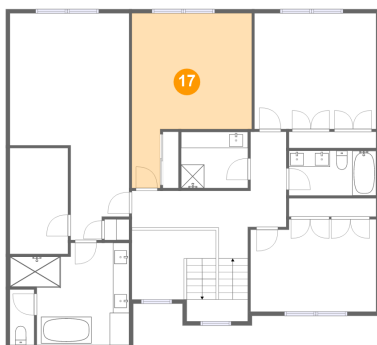
16 Floor 3 - Bath



Max Dimensions: 10'9" x 5'6"
Calculated Area: 59 sq. ft
Included: Yes

Heated: Yes
Finished: Yes
Enclosed: Yes
Contiguous: Yes
Permitted: Yes
Wet space: Yes
Addition: No
Conversion: No

17 Floor 3 - Bedroom

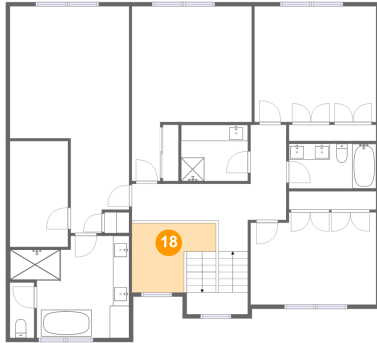


Max Dimensions: 14'9" x 21'6"
Calculated Area: 235 sq. ft
Included: Yes

Heated: Yes
Finished: Yes
Enclosed: Yes
Contiguous: Yes
Permitted: Yes
Wet space: No
Addition: No
Conversion: No

113 Elizabeth Avenue, Brick, Ocean County, New Jersey, United States, 08724

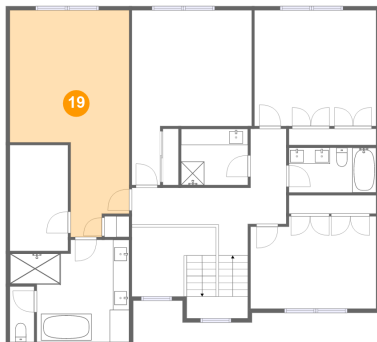
18 Floor 3 - Open To Below



Max Dimensions: 10'4" x 8'6"
Calculated Area: 68 sq. ft
Included: No

Heated: No
Finished: No
Enclosed: No
Contiguous: Yes
Permitted: No
Wet space: No
Addition: No
Conversion: No

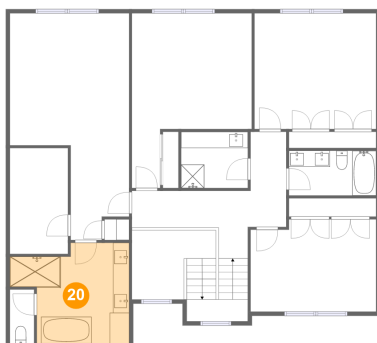
19 Floor 3 - Primary Bedroom



Max Dimensions: 14'8" x 27'11"
Calculated Area: 313 sq. ft
Included: Yes

Heated: Yes
Finished: Yes
Enclosed: Yes
Contiguous: Yes
Permitted: Yes
Wet space: No
Addition: No
Conversion: No

20 Floor 3 - Primary Bath

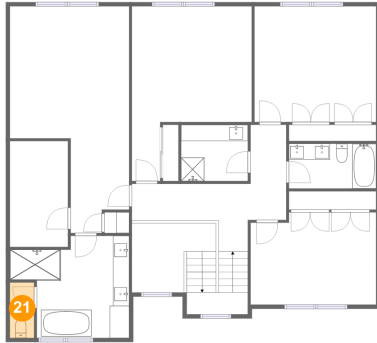


Max Dimensions: 14'8" x 12'7"
Calculated Area: 148 sq. ft
Included: Yes

Heated: Yes
Finished: Yes
Enclosed: Yes
Contiguous: Yes
Permitted: Yes
Wet space: Yes
Addition: No
Conversion: No

113 Elizabeth Avenue, Brick, Ocean County, New Jersey, United States, 08724

21 Floor 3 - WC



Max Dimensions: 2'11" x 6'10"
Calculated Area: 20 sq. ft
Included: Yes

Heated: Yes
Finished: Yes
Enclosed: Yes
Contiguous: Yes
Permitted: Yes
Wet space: Yes
Addition: No
Conversion: No

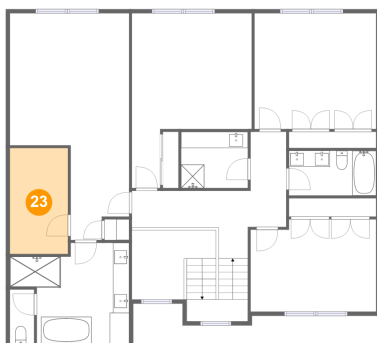
22 Floor 3 - Bedroom



Max Dimensions: 15'0" x 14'3"
Calculated Area: 213 sq. ft
Included: Yes

Heated: Yes
Finished: Yes
Enclosed: Yes
Contiguous: Yes
Permitted: Yes
Wet space: No
Addition: No
Conversion: No

23 Floor 3 - W.I.C.



Max Dimensions: 7'2" x 13'0"
Calculated Area: 93 sq. ft
Included: Yes

Heated: Yes
Finished: Yes
Enclosed: Yes
Contiguous: Yes
Permitted: Yes
Wet space: No
Addition: No
Conversion: No