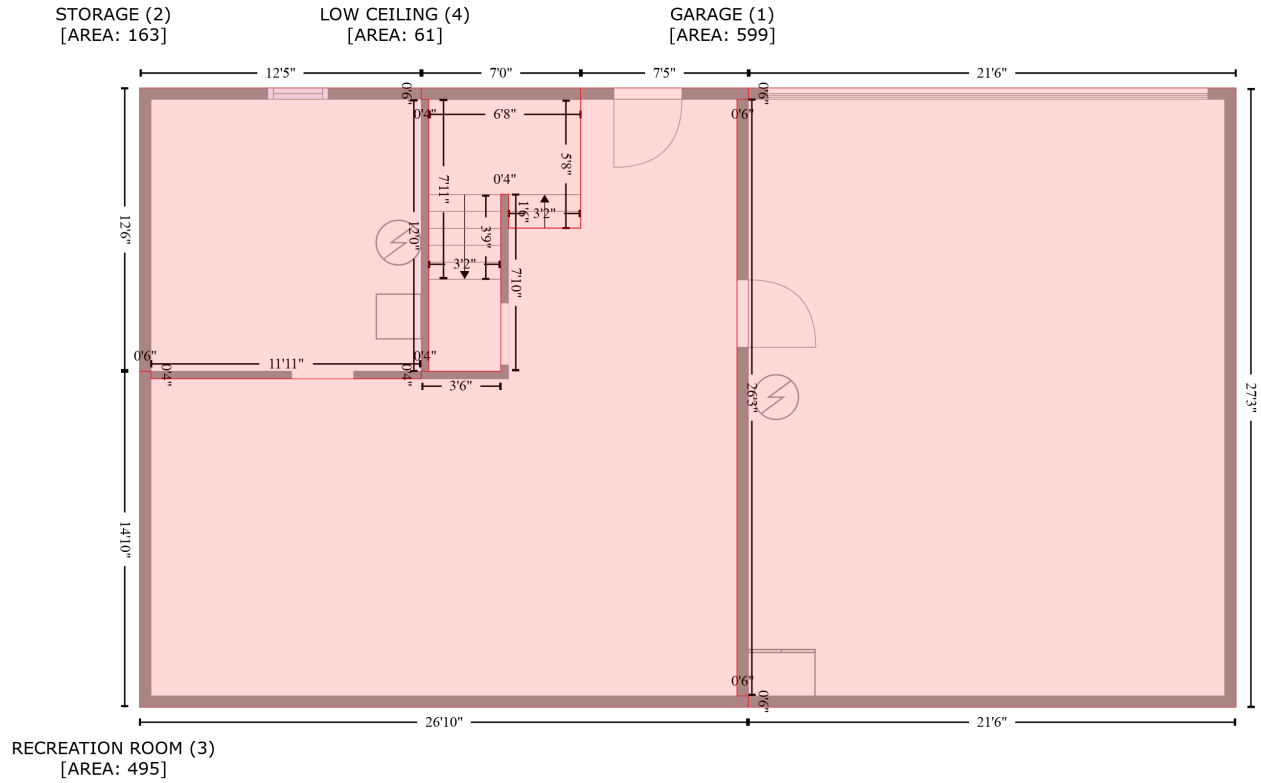


651 Geoghegan Rd, Shelbyville, KY, US

Gross Living Area: 1392 sq. ft



Space	Area (sq. ft)	Calculation <small>Coordinate Polygon Area Algorithm using inches</small>
GARAGE (Non-living area)	599	$-\left((584.7 + 584.7) * (35.3 - 362.7) + (584.7 + 326.9) * (362.7 - 362.7) + (326.9 + 326.9) * (362.7 - 356.7) + (326.9 + 320.9) * (356.7 - 356.7) + (320.9 + 320.9) * (356.7 - 41.3) + (320.9 + 326.9) * (41.3 - 41.3) + (326.9 + 326.9) * (41.3 - 35.3) + (326.9 + 584.7) * (35.3 - 35.3)\right) * 0.5 + 0.00694$
STORAGE (Non-living area)	163	$-\left((153.9 + 153.9) * (35.3 - 41.3) + (153.9 + 157.9) * (41.3 - 41.3) + (157.9 + 157.9) * (41.3 - 185.1) + (157.9 + 153.9) * (185.1 - 185.1) + (153.9 + 153.9) * (185.1 - 189.1) + (153.9 + 11) * (189.1 - 189.1) + (11 + 11) * (189.1 - 185.1) + (11 + 5) * (185.1 - 185.1) + (5 + 5) * (185.1 - 35.3) + (5 + 153.9) * (35.3 - 35.3)\right) * 0.5 + 0.00694$
RECREATION ROOM (Non-living area)	495	$-\left((326.9 + 326.9) * (35.3 - 41.3) + (326.9 + 320.9) * (41.3 - 41.3) + (320.9 + 320.9) * (41.3 - 356.7) + (320.9 + 326.9) * (356.7 - 356.7) + (326.9 + 326.9) * (356.7 - 362.7) + (326.9 + 5) * (362.7 - 362.7) + (5 + 5) * (362.7 - 185.1) + (5 + 11) * (185.1 - 185.1) + (11 + 11) * (185.1 - 189.1) + (11 + 153.9) * (189.1 - 189.1) + (153.9 + 153.9) * (189.1 - 185.1) + (153.9 + 196) * (185.1 - 185.1) + (196 + 196) * (185.1 - 91.5) + (196 + 200) * (91.5 - 91.5) + (200 + 200) * (91.5 - 109.4) + (200 + 238.1) * (109.4 - 109.4) + (238.1 + 238.1) * (109.4 - 35.3) + (238.1 + 326.9) * (35.3 - 35.3)\right) * 0.5 + 0.00694$
LOW CEILING (Non-living area)	61	$-\left((238.1 + 238.1) * (35.3 - 109.4) + (238.1 + 200.2) * (109.4 - 109.4) + (200.2 + 200.2) * (109.4 - 91.6) + (200.2 + 196) * (91.6 - 91.5) + (196 + 196) * (91.5 - 185.1) + (196 + 157.9) * (185.1 - 185.1) + (157.9 + 157.9) * (185.1 - 41.3) + (157.9 + 153.9) * (41.3 - 41.3) + (153.9 + 153.9) * (41.3 - 35.3) + (153.9 + 238.1) * (35.3 - 35.3)\right) * 0.5 + 0.00694$

651 Geoghegan Rd, Shelbyville, KY, US

Gross Living Area: 1392 sq. ft

FLOOR 2
[AREA: 1392]



Space	Area (sq. ft)	Calculation <small>Coordinate Polygon Area Algorithm using inches</small>
FLOOR 2 (Living area)	1392	$-\left((584.7 + 584.7) * (35.3 - 381.1) + (584.7 + 5) * (381.1 - 381.1) + (5 + 5) * (381.1 - 35.3) + (5 + 584.7) * (35.3 - 35.3)\right) * 0.5 * 0.00694$