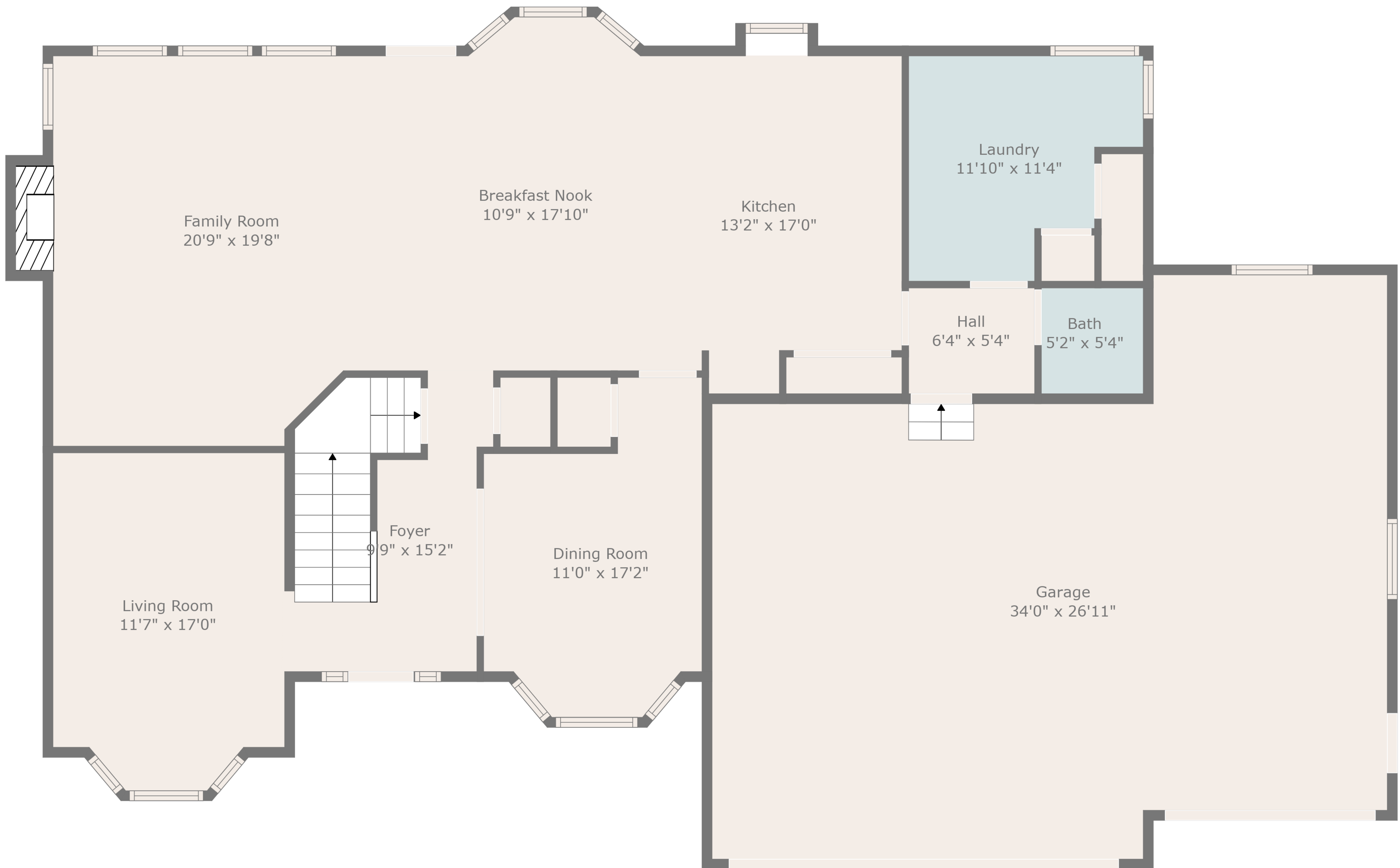


**TOTAL: 4595 sq. ft**

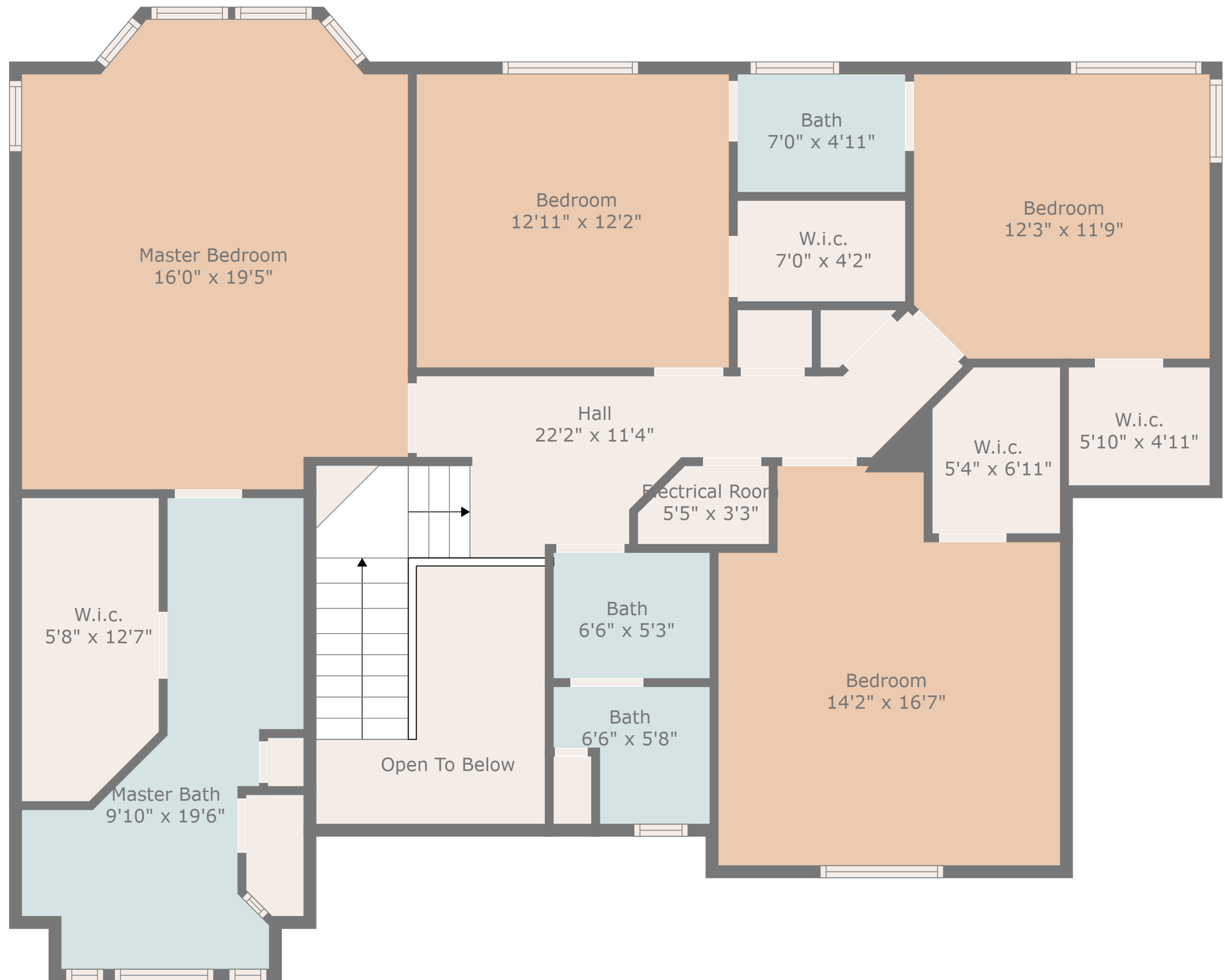
Below Ground: 1472 sq. ft, FLOOR 2: 1573 sq. ft, FLOOR 3: 1550 sq. ft  
EXCLUDED AREAS: STORAGE: 1031 sq. ft, ELECTRICAL ROOM: 71 sq. ft, FIREPLACE: 12 sq. ft,  
GARAGE: 866 sq. ft, BAY WINDOW: 5 sq. ft, OPEN TO BELOW: 71 sq. ft



**TOTAL: 4595 sq. ft**

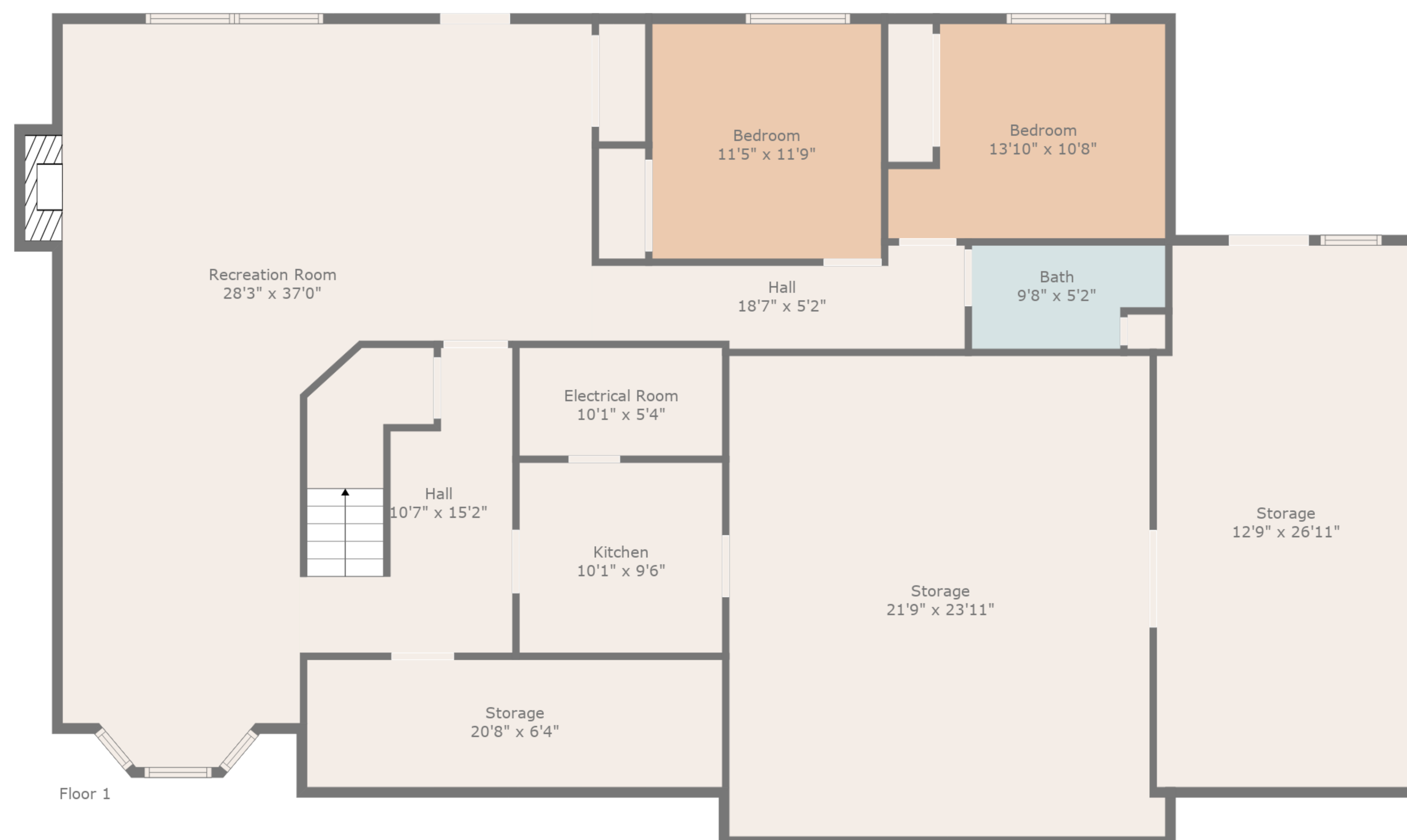
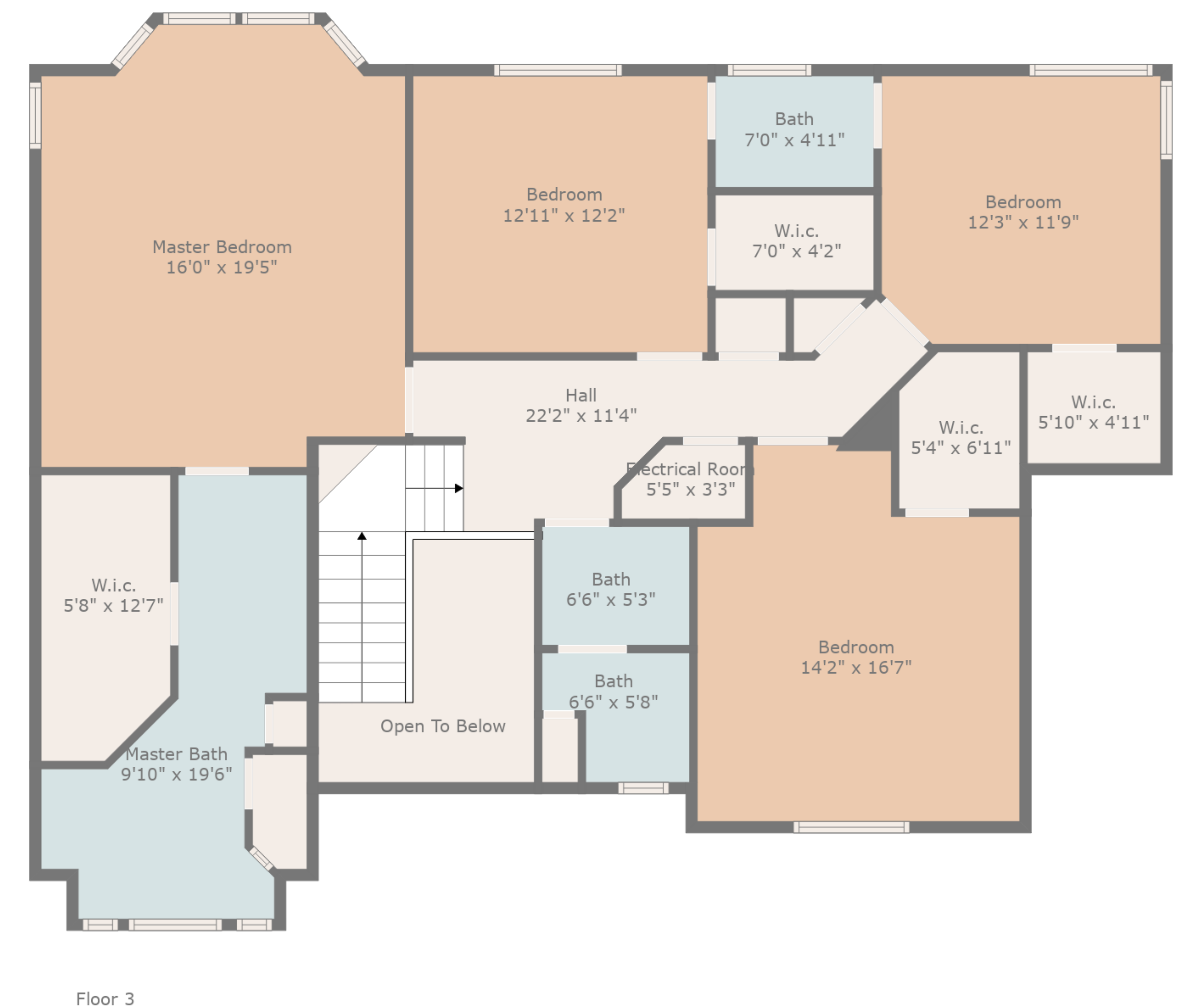
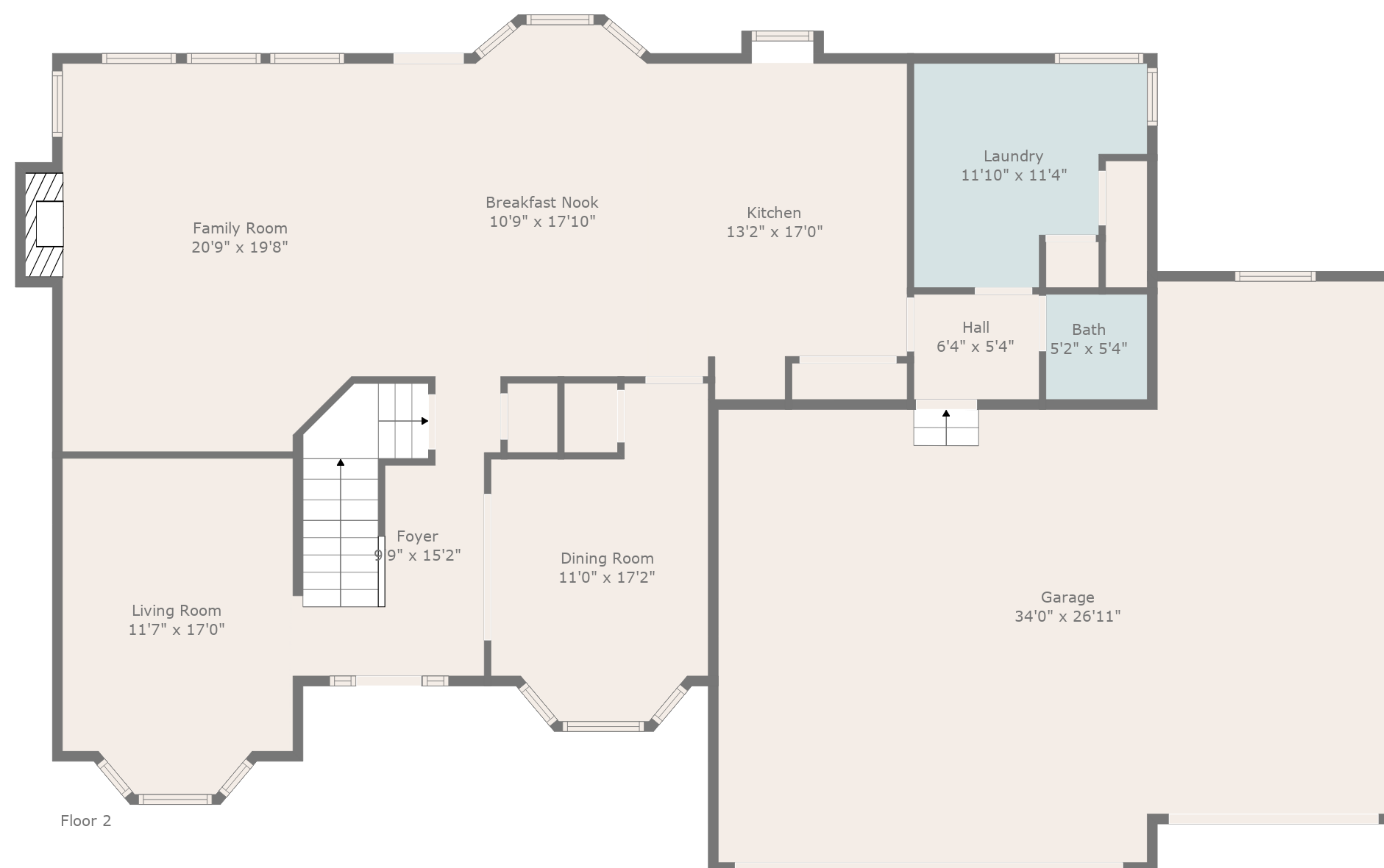
Below Ground: 1472 sq. ft, FLOOR 2: 1573 sq. ft, FLOOR 3: 1550 sq. ft  
EXCLUDED AREAS: STORAGE: 1031 sq. ft, ELECTRICAL ROOM: 71 sq. ft, FIREPLACE: 12 sq. ft,  
GARAGE: 866 sq. ft, BAY WINDOW: 5 sq. ft, OPEN TO BELOW: 71 sq. ft





**TOTAL: 4595 sq. ft**

Below Ground: 1472 sq. ft, FLOOR 2: 1573 sq. ft, FLOOR 3: 1550 sq. ft  
 EXCLUDED AREAS: STORAGE: 1031 sq. ft, ELECTRICAL ROOM: 71 sq. ft, FIREPLACE: 12 sq. ft,  
 GARAGE: 866 sq. ft, BAY WINDOW: 5 sq. ft, OPEN TO BELOW: 71 sq. ft



**TOTAL: 4595 sq. ft**

Below Ground: 1472 sq. ft, FLOOR 2: 1573 sq. ft, FLOOR 3: 1550 sq. ft  
 EXCLUDED AREAS: STORAGE: 1031 sq. ft, ELECTRICAL ROOM: 71 sq. ft, FIREPLACE: 12 sq. ft,  
 GARAGE: 866 sq. ft, BAY WINDOW: 5 sq. ft, OPEN TO BELOW: 71 sq. ft