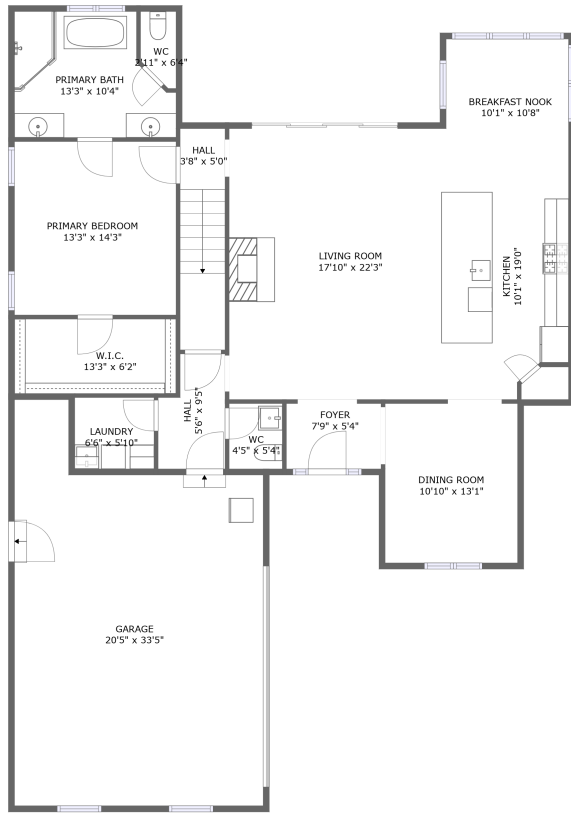
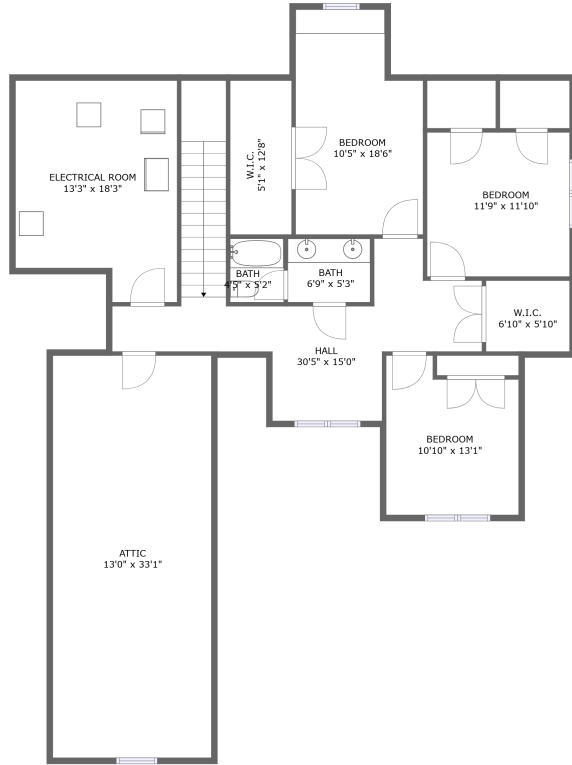


# 3972 Hawks Way Northeast, Northeast Huntsville, Huntsville, Madison County,



FLOOR 1



FLOOR 2

## Property Summary



2 floors



4 bedrooms



2 bathrooms



3,995 total sqft

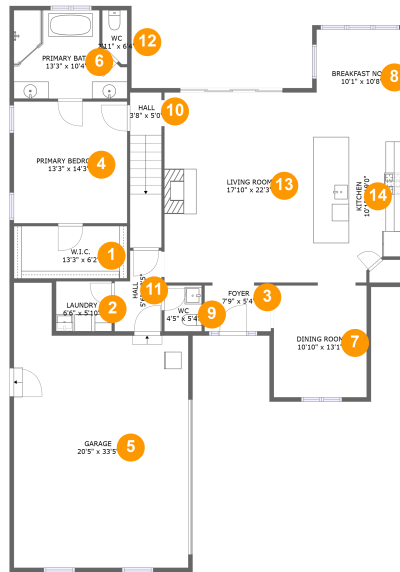


1 garages



2,656 Gross Living Area sqft

# 3972 Hawks Way Northeast, Northeast Huntsville, Huntsville, Madison County,



## Room Dimensions

Floor 1

Total sqft: 2231

Living area: 1606

#	Room name	Dimensions	Area (sqft)	Counted as Living Area
1	W.i.c.	13'3" x 6'2"	81 sq. ft	Yes
2	Laundry	6'6" x 5'10"	38 sq. ft	Yes
3	Foyer	7'9" x 5'4"	42 sq. ft	Yes
4	Primary Bedroom	13'3" x 14'3"	190 sq. ft	Yes
5	Garage	20'5" x 33'5"	584 sq. ft	No
6	Primary Bath	13'3" x 10'4"	119 sq. ft	Yes
7	Dining Room	10'10" x 13'1"	143 sq. ft	Yes
8	Breakfast Nook	10'1" x 10'8"	108 sq. ft	Yes
9	Wc	4'5" x 5'4"	24 sq. ft	Yes
10	Hall	3'8" x 5'0"	67 sq. ft	Yes
11	Hall	5'6" x 9'5"	46 sq. ft	Yes

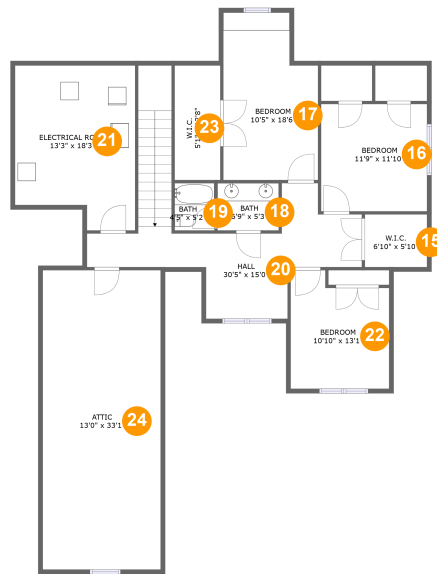
Scan captured on Mon, 13 May 2024 21:25:45 GMT

Information is calculated by CubiCasa technology; deemed highly reliable but not guaranteed.

**3972 Hawks Way Northeast, Northeast  
Huntsville, Huntsville, Madison County,**

#	Room name	Dimensions	Area (sqft)	Counted as Living Area
12	Wc	2'11" x 6'4"	16 sq. ft	Yes
13	Living Room	17'10" x 22'3"	398 sq. ft	Yes
14	Kitchen	10'1" x 19'0"	180 sq. ft	Yes

# 3972 Hawks Way Northeast, Northeast Huntsville, Huntsville, Madison County,



## Room Dimensions

Floor 2

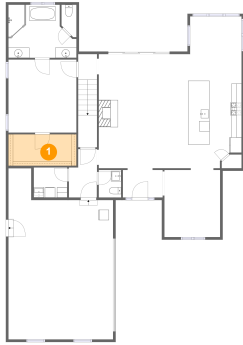
Total sqft: 1764

Living area: 1050

#	Room name	Dimensions	Area (sqft)	Counted as Living Area
15	W.i.c.	6'10" x 5'10"	40 sq. ft	Yes
16	Bedroom	11'9" x 11'10"	139 sq. ft	Yes
17	Bedroom	10'5" x 18'6"	176 sq. ft	Yes
18	Bath	6'9" x 5'3"	35 sq. ft	Yes
19	Bath	4'5" x 5'2"	23 sq. ft	Yes
20	Hall	30'5" x 15'0"	266 sq. ft	Yes
21	Electrical Room	13'3" x 18'3"	220 sq. ft	No
22	Bedroom	10'10" x 13'1"	129 sq. ft	Yes
23	W.i.c.	5'1" x 12'8"	64 sq. ft	Yes
24	Attic	13'0" x 33'1"	319 sq. ft	No

# 3972 Hawks Way Northeast, Northeast Huntsville, Huntsville, Madison County,

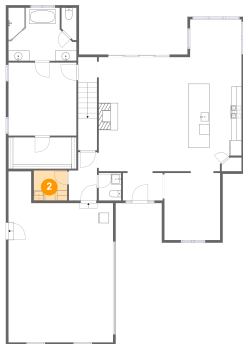
## 1 Floor 1 - W.i.c.



**Dimensions:** 13'3" x 6'2"  
**Area:** 81 sq. ft  
**Counted as Living Area:**  
Yes

**Heated:** Yes  
**Finished:** Yes  
**Enclosed:** Yes  
**Contiguous:**  
Yes  
**Permitted:** Yes  
**Wet Space:** No  
**Addition:** No  
**Conversion:** No

## 2 Floor 1 - Laundry

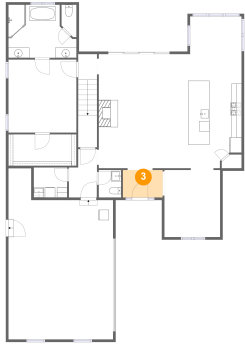


**Dimensions:** 6'6" x 5'10"  
**Area:** 38 sq. ft  
**Counted as Living Area:**  
Yes

**Heated:** Yes  
**Finished:** Yes  
**Enclosed:** Yes  
**Contiguous:**  
Yes  
**Permitted:** Yes  
**Wet Space:** No  
**Addition:** No  
**Conversion:** No

# 3972 Hawks Way Northeast, Northeast Huntsville, Huntsville, Madison County,

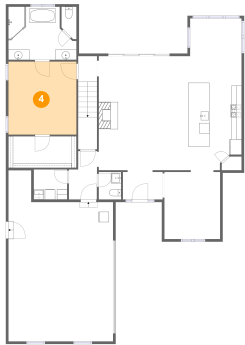
## 3 Floor 1 - Foyer



Dimensions: 7'9" x 5'4"  
Area: 42 sq. ft  
Counted as Living Area:  
Yes

Heated: Yes  
Finished: Yes  
Enclosed: Yes  
Contiguous:  
Yes  
Permitted: Yes  
Wet Space: No  
Addition: No  
Conversion: No

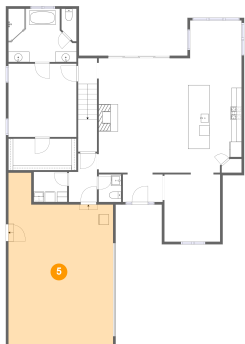
## 4 Floor 1 - Primary Bedroom



Dimensions: 13'3" x 14'3"  
Area: 190 sq. ft  
Counted as Living Area:  
Yes

Heated: Yes  
Finished: Yes  
Enclosed: Yes  
Contiguous:  
Yes  
Permitted: Yes  
Wet Space: No  
Addition: No  
Conversion: No

## 5 Floor 1 - Garage

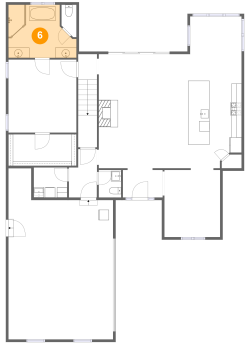


Dimensions: 20'5" x 33'5"  
Area: 584 sq. ft  
Counted as Living Area: No

Heated: No  
Finished: No  
Enclosed: Yes  
Contiguous: Yes  
Permitted: Yes  
Wet Space: No  
Addition: No  
Conversion: No

# 3972 Hawks Way Northeast, Northeast Huntsville, Huntsville, Madison County,

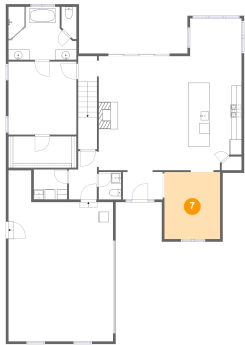
## 6 Floor 1 - Primary Bath



Dimensions: 13'3" x 10'4"  
Area: 119 sq. ft  
Counted as Living Area:  
Yes

Heated: Yes  
Finished: Yes  
Enclosed: Yes  
Contiguous:  
Yes  
Permitted: Yes  
Wet Space: Yes  
Addition: No  
Conversion: No

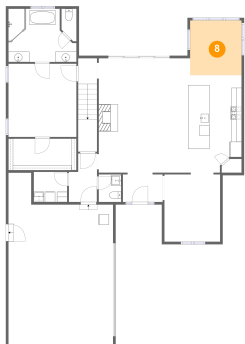
## 7 Floor 1 - Dining Room



Dimensions: 10'10" x 13'1"  
Area: 143 sq. ft  
Counted as Living Area:  
Yes

Heated: Yes  
Finished: Yes  
Enclosed: Yes  
Contiguous:  
Yes  
Permitted: Yes  
Wet Space: No  
Addition: No  
Conversion: No

## 8 Floor 1 - Breakfast Nook

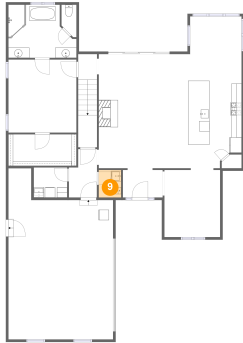


Dimensions: 10'1" x 10'8"  
Area: 108 sq. ft  
Counted as Living Area:  
Yes

Heated: Yes  
Finished: Yes  
Enclosed: Yes  
Contiguous:  
Yes  
Permitted: Yes  
Wet Space: No  
Addition: No  
Conversion: No

# 3972 Hawks Way Northeast, Northeast Huntsville, Huntsville, Madison County,

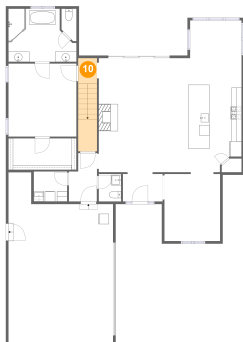
## 9 Floor 1 - Wc



Dimensions: 4'5" x 5'4"  
Area: 24 sq. ft  
Counted as Living Area:  
Yes

Heated: Yes  
Finished: Yes  
Enclosed: Yes  
Contiguous:  
Yes  
Permitted: Yes  
Wet Space: Yes  
Addition: No  
Conversion: No

## 10 Floor 1 - Hall



Dimensions: 3'8" x 5'0"  
Area: 67 sq. ft  
Counted as Living Area:  
Yes

Heated: Yes  
Finished: Yes  
Enclosed: Yes  
Contiguous:  
Yes  
Permitted: Yes  
Wet Space: No  
Addition: No  
Conversion: No

## 11 Floor 1 - Hall



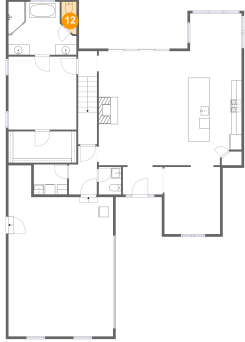
Dimensions: 5'6" x 9'5"  
Area: 46 sq. ft  
Counted as Living Area:  
Yes

Heated: Yes  
Finished: Yes  
Enclosed: Yes  
Contiguous:  
Yes  
Permitted: Yes  
Wet Space: No  
Addition: No  
Conversion: No



# 3972 Hawks Way Northeast, Northeast Huntsville, Huntsville, Madison County,

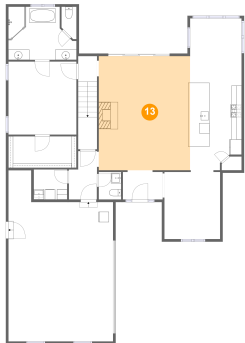
## 12 Floor 1 - Wc



Dimensions: 2'11" x 6'4"  
Area: 16 sq. ft  
Counted as Living Area:  
Yes

Heated: Yes  
Finished: Yes  
Enclosed: Yes  
Contiguous:  
Yes  
Permitted: Yes  
Wet Space: Yes  
Addition: No  
Conversion: No

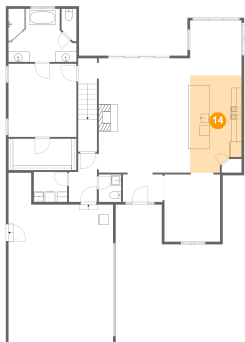
## 13 Floor 1 - Living Room



Dimensions: 17'10" x 22'3"  
Area: 398 sq. ft  
Counted as Living Area:  
Yes

Heated: Yes  
Finished: Yes  
Enclosed: Yes  
Contiguous:  
Yes  
Permitted: Yes  
Wet Space: No  
Addition: No  
Conversion: No

## 14 Floor 1 - Kitchen

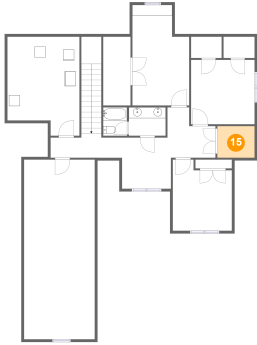


Dimensions: 10'1" x 19'0"  
Area: 180 sq. ft  
Counted as Living Area:  
Yes

Heated: Yes  
Finished: Yes  
Enclosed: Yes  
Contiguous:  
Yes  
Permitted: Yes  
Wet Space: No  
Addition: No  
Conversion: No

# 3972 Hawks Way Northeast, Northeast Huntsville, Huntsville, Madison County,

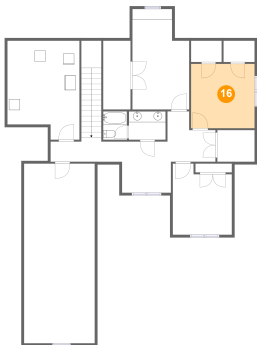
## 15 Floor 2 - W.i.c.



Dimensions: 6'10" x 5'10"  
Area: 40 sq. ft  
Counted as Living Area:  
Yes

Heated: Yes  
Finished: Yes  
Enclosed: Yes  
Contiguous:  
Yes  
Permitted: Yes  
Wet Space: No  
Addition: No  
Conversion: No

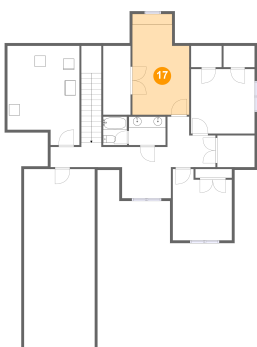
## 16 Floor 2 - Bedroom



Dimensions: 11'9" x 11'10"  
Area: 139 sq. ft  
Counted as Living Area:  
Yes

Heated: Yes  
Finished: Yes  
Enclosed: Yes  
Contiguous:  
Yes  
Permitted: Yes  
Wet Space: No  
Addition: No  
Conversion: No

## 17 Floor 2 - Bedroom

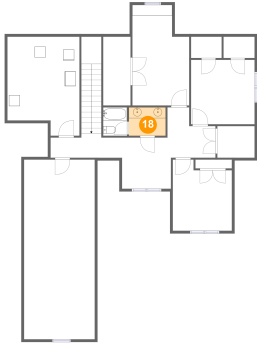


Dimensions: 10'5" x 18'6"  
Area: 176 sq. ft  
Counted as Living Area:  
Yes

Heated: Yes  
Finished: Yes  
Enclosed: Yes  
Contiguous:  
Yes  
Permitted: Yes  
Wet Space: No  
Addition: No  
Conversion: No

# 3972 Hawks Way Northeast, Northeast Huntsville, Huntsville, Madison County,

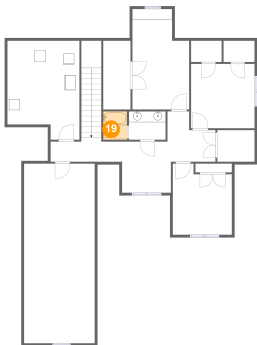
## 18 Floor 2 - Bath



Dimensions: 6'9" x 5'3"  
Area: 35 sq. ft  
Counted as Living Area:  
Yes

Heated: Yes  
Finished: Yes  
Enclosed: Yes  
Contiguous:  
Yes  
Permitted: Yes  
Wet Space: Yes  
Addition: No  
Conversion: No

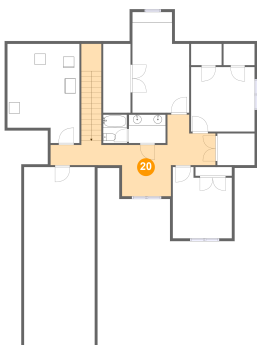
## 19 Floor 2 - Bath



Dimensions: 4'5" x 5'2"  
Area: 23 sq. ft  
Counted as Living Area:  
Yes

Heated: Yes  
Finished: Yes  
Enclosed: Yes  
Contiguous:  
Yes  
Permitted: Yes  
Wet Space: Yes  
Addition: No  
Conversion: No

## 20 Floor 2 - Hall

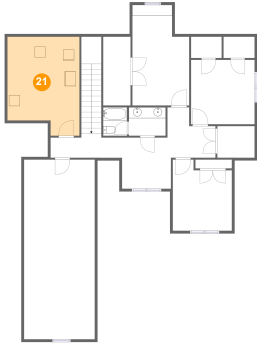


Dimensions: 30'5" x 15'0"  
Area: 266 sq. ft  
Counted as Living Area:  
Yes

Heated: Yes  
Finished: Yes  
Enclosed: Yes  
Contiguous:  
Yes  
Permitted: Yes  
Wet Space: No  
Addition: No  
Conversion: No

# 3972 Hawks Way Northeast, Northeast Huntsville, Huntsville, Madison County,

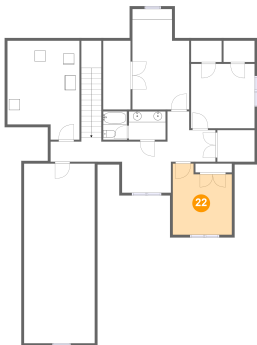
## 21 Floor 2 - Electrical Room



Dimensions: 13'3" x 18'3"  
Area: 220 sq. ft  
Counted as Living Area: No

Heated: No  
Finished: No  
Enclosed: Yes  
Contiguous: Yes  
Permitted: Yes  
Wet Space: No  
Addition: No  
Conversion: No

## 22 Floor 2 - Bedroom



Dimensions: 10'10" x 13'1"  
Area: 129 sq. ft  
Counted as Living Area:  
Yes

Heated: Yes  
Finished: Yes  
Enclosed: Yes  
Contiguous:  
Yes  
Permitted: Yes  
Wet Space: No  
Addition: No  
Conversion: No

## 23 Floor 2 - W.i.c.

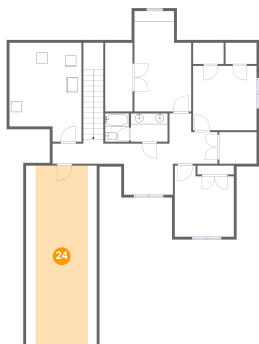


Dimensions: 5'1" x 12'8"  
Area: 64 sq. ft  
Counted as Living Area:  
Yes

Heated: Yes  
Finished: Yes  
Enclosed: Yes  
Contiguous:  
Yes  
Permitted: Yes  
Wet Space: No  
Addition: No  
Conversion: No

# 3972 Hawks Way Northeast, Northeast Huntsville, Huntsville, Madison County,

## 24 Floor 2 - Attic



Dimensions: 13'0" x 33'1"  
Area: 319 sq. ft  
Counted as Living Area: No

Heated: No  
Finished: No  
Enclosed: Yes  
Contiguous: Yes  
Permitted: Yes  
Wet Space: No  
Addition: No  
Conversion: No