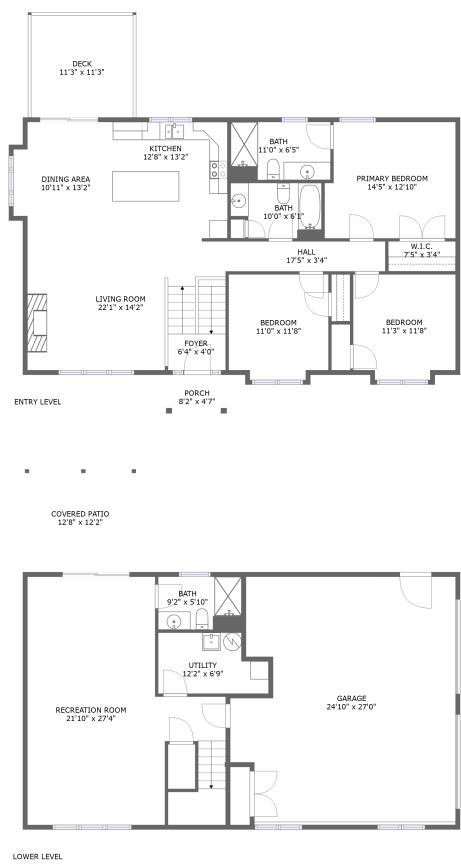


Home report

1173 Jewel Trail, Diamond Hill, Moneta, Bedford County,
Virginia, United States, 24121





Total Area: 1962 sq. ft


Floor 1: 644 sq. ft, Floor 2: 1318 sq. ft

Excluded: Garage 624 sq. ft, Covered patio 155 sq. ft, Deck 126 sq. ft, Porch 37 sq. ft, Walls: 175 sq. ft

Property summary

 **2** Floors

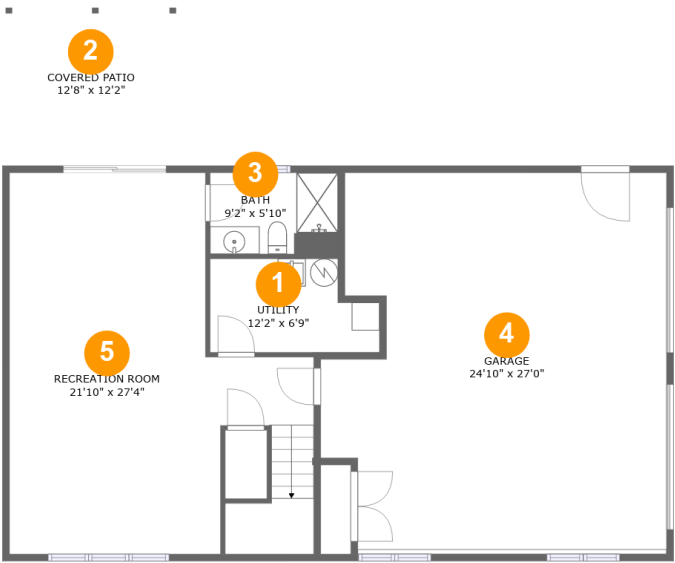
 **3** Bedrooms

 **3** Bathrooms

 **1** Garages

Home report

1173 Jewel Trail, Diamond Hill, Moneta, Bedford County,
Virginia, United States, 24121



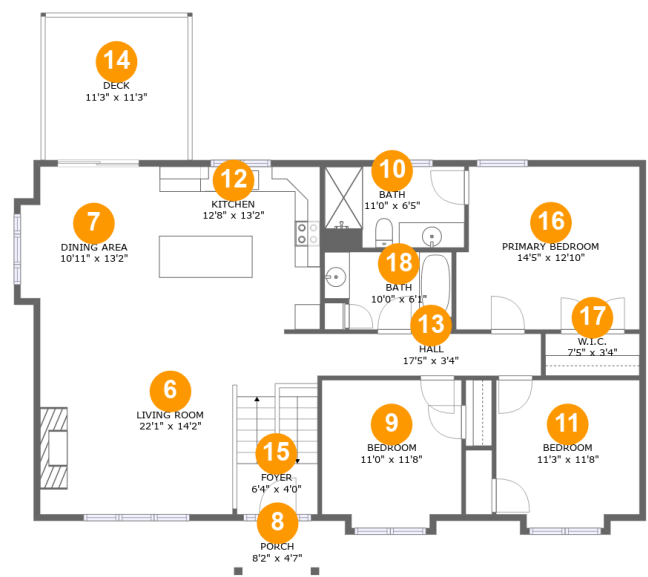
Room dimensions

Floor 1 Total:644sqft Excluded: 779sqft

#		Max Dimensions	sqft	Included
1	Utility	12'2" x 6'9"	72 sq. ft	Yes
2	Covered Patio	12'8" x 12'2"	155 sq. ft	No
3	Bath	9'2" x 5'10"	54 sq. ft	Yes
4	Garage	24'10" x 27'0"	624 sq. ft	No
5	Recreation Room	21'10" x 27'4"	473 sq. ft	Yes

Home report

1173 Jewel Trail, Diamond Hill, Moneta, Bedford County,
Virginia, United States, 24121



Room dimensions

Floor 2 Total:1318sqft Excluded: 163sqft

#		Max Dimensions	sqft	Included
6	Living Room	22'1" x 14'2"	286 sq. ft	Yes
7	Dining Area	10'11" x 13'2"	135 sq. ft	Yes
8	Porch	8'2" x 4'7"	37 sq. ft	No
9	Bedroom	11'0" x 11'8"	123 sq. ft	Yes
10	Bath	11'0" x 6'5"	70 sq. ft	Yes
11	Bedroom	11'3" x 11'8"	126 sq. ft	Yes
12	Kitchen	12'8" x 13'2"	166 sq. ft	Yes
13	Hall	17'5" x 3'4"	58 sq. ft	Yes
14	Deck	11'3" x 11'3"	126 sq. ft	No
15	Foyer	6'4" x 4'0"	25 sq. ft	Yes
16	Primary Bedroom	14'5" x 12'10"	178 sq. ft	Yes

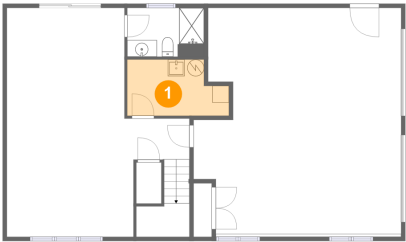
Home report

1173 Jewel Trail, Diamond Hill, Moneta, Bedford County,
Virginia, United States, 24121

#		Max Dimensions	sqft	Included
17	W.I.C.	7'5" x 3'4"	25 sq. ft	Yes
18	Bath	10'0" x 6'1"	56 sq. ft	Yes

1173 Jewel Trail, Diamond Hill, Moneta, Bedford County,
Virginia, United States, 24121

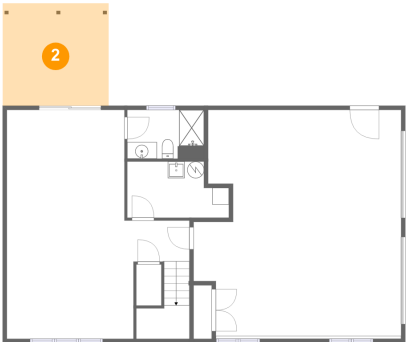
1 Floor 1 - Utility



Max Dimensions: 12'2" x 6'9"
Calculated Area: 72 sq. ft
Included: Yes

Heated: Yes
Finished: Yes
Enclosed: Yes
Contiguous: Yes
Permitted: Yes
Wet space: No
Addition: No
Conversion: No

2 Floor 1 - Covered Patio



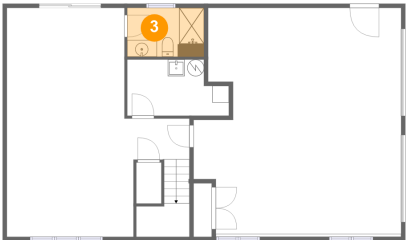
Max Dimensions: 12'8" x 12'2"
Calculated Area: 155 sq. ft
Included: No

Heated: No
Finished: Yes
Enclosed: No
Contiguous: Yes
Permitted: Yes
Wet space: No
Addition: No
Conversion: No

1173 Jewel Trail, Diamond Hill, Moneta, Bedford County,
Virginia, United States, 24121

3 Floor 1 - Bath

. . .

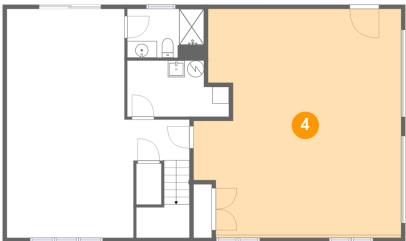


Max Dimensions: 9'2" x 5'10"
Calculated Area: 54 sq. ft
Included: Yes

Heated: Yes
Finished: Yes
Enclosed: Yes
Contiguous: Yes
Permitted: Yes
Wet space: Yes
Addition: No
Conversion: No

4 Floor 1 - Garage

. . .



Max Dimensions: 24'10" x 27'0"
Calculated Area: 624 sq. ft
Included: No

Heated: No
Finished: No
Enclosed: Yes
Contiguous: Yes
Permitted: Yes
Wet space: No
Addition: No
Conversion: No

5 Floor 1 - Recreation Room

. . .



Max Dimensions: 21'10" x 27'4"
Calculated Area: 473 sq. ft
Included: Yes

Heated: Yes
Finished: Yes
Enclosed: Yes
Contiguous: Yes
Permitted: Yes
Wet space: No
Addition: No
Conversion: No

1173 Jewel Trail, Diamond Hill, Moneta, Bedford County,
Virginia, United States, 24121

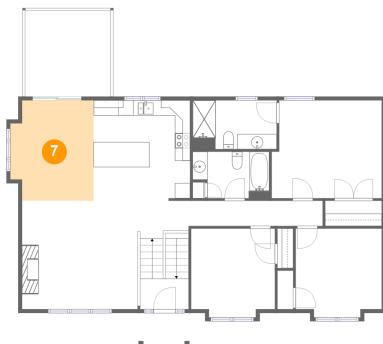
6 Floor 2 - Living Room



Max Dimensions: 22'1" x 14'2"
Calculated Area: 286 sq. ft
Included: Yes

Heated: Yes
Finished: Yes
Enclosed: Yes
Contiguous: Yes
Permitted: Yes
Wet space: No
Addition: No
Conversion: No

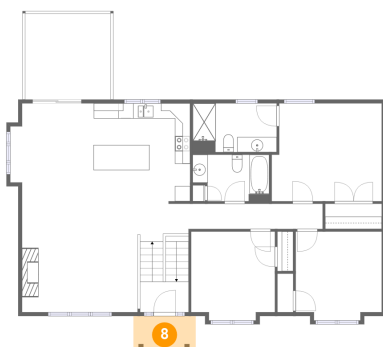
7 Floor 2 - Dining Area



Max Dimensions: 10'11" x 13'2"
Calculated Area: 135 sq. ft
Included: Yes

Heated: Yes
Finished: Yes
Enclosed: Yes
Contiguous: Yes
Permitted: Yes
Wet space: No
Addition: No
Conversion: No

8 Floor 2 - Porch

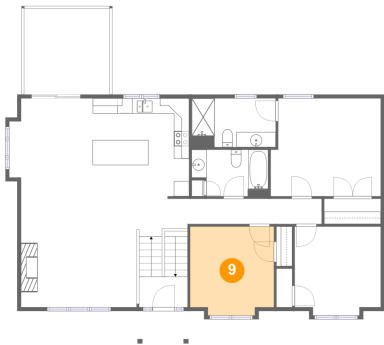


Max Dimensions: 8'2" x 4'7"
Calculated Area: 37 sq. ft
Included: No

Heated: No
Finished: Yes
Enclosed: No
Contiguous: Yes
Permitted: Yes
Wet space: No
Addition: No
Conversion: No

1173 Jewel Trail, Diamond Hill, Moneta, Bedford County,
Virginia, United States, 24121

9 Floor 2 - Bedroom



Max Dimensions: 11'0" x 11'8"
Calculated Area: 123 sq. ft
Included: Yes

Heated: Yes
Finished: Yes
Enclosed: Yes
Contiguous: Yes
Permitted: Yes
Wet space: No
Addition: No
Conversion: No

10 Floor 2 - Bath



Max Dimensions: 11'0" x 6'5"
Calculated Area: 70 sq. ft
Included: Yes

Heated: Yes
Finished: Yes
Enclosed: Yes
Contiguous: Yes
Permitted: Yes
Wet space: Yes
Addition: No
Conversion: No

11 Floor 2 - Bedroom

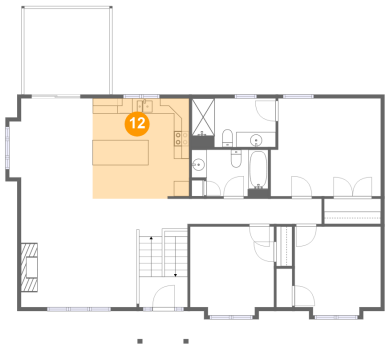


Max Dimensions: 11'3" x 11'8"
Calculated Area: 126 sq. ft
Included: Yes

Heated: Yes
Finished: Yes
Enclosed: Yes
Contiguous: Yes
Permitted: Yes
Wet space: No
Addition: No
Conversion: No

1173 Jewel Trail, Diamond Hill, Moneta, Bedford County,
Virginia, United States, 24121

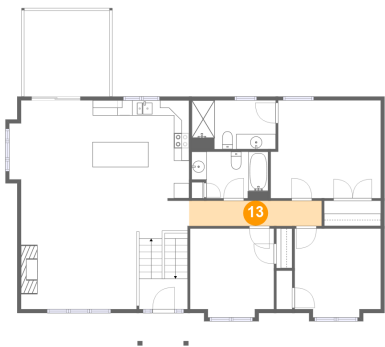
12 Floor 2 - Kitchen



Max Dimensions: 12'8" x 13'2"
Calculated Area: 166 sq. ft
Included: Yes

Heated: Yes
Finished: Yes
Enclosed: Yes
Contiguous: Yes
Permitted: Yes
Wet space: No
Addition: No
Conversion: No

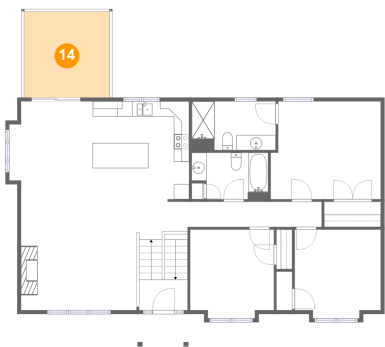
13 Floor 2 - Hall



Max Dimensions: 17'5" x 3'4"
Calculated Area: 58 sq. ft
Included: Yes

Heated: Yes
Finished: Yes
Enclosed: Yes
Contiguous: Yes
Permitted: Yes
Wet space: No
Addition: No
Conversion: No

14 Floor 2 - Deck

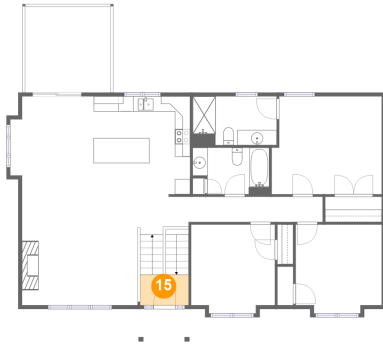


Max Dimensions: 11'3" x 11'3"
Calculated Area: 126 sq. ft
Included: No

Heated: No
Finished: Yes
Enclosed: No
Contiguous: No
Permitted: Yes
Wet space: No
Addition: No
Conversion: No

1173 Jewel Trail, Diamond Hill, Moneta, Bedford County,
Virginia, United States, 24121

15 Floor 2 - Foyer



Max Dimensions: 6'4" x 4'0"
Calculated Area: 25 sq. ft
Included: Yes

Heated: Yes
Finished: Yes
Enclosed: Yes
Contiguous: Yes
Permitted: Yes
Wet space: No
Addition: No
Conversion: No

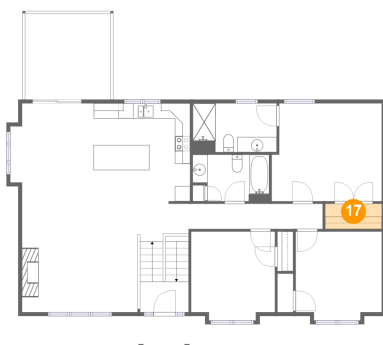
16 Floor 2 - Primary Bedroom



Max Dimensions: 14'5" x
12'10"
Calculated Area: 178 sq. ft
Included: Yes

Heated: Yes
Finished: Yes
Enclosed: Yes
Contiguous:
Yes
Permitted: Yes
Wet space: No
Addition: No
Conversion: No

17 Floor 2 - W.I.C.

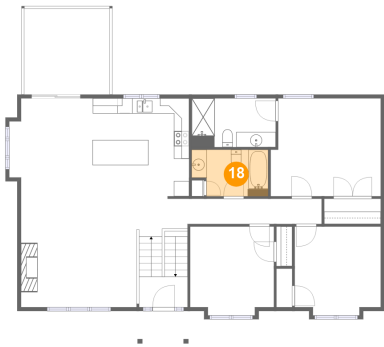


Max Dimensions: 7'5" x 3'4"
Calculated Area: 25 sq. ft
Included: Yes

Heated: Yes
Finished: Yes
Enclosed: Yes
Contiguous: Yes
Permitted: Yes
Wet space: No
Addition: No
Conversion: No

1173 Jewel Trail, Diamond Hill, Moneta, Bedford County,
Virginia, United States, 24121

18 Floor 2 - Bath



Max Dimensions: 10'0" x 6'1"
Calculated Area: 56 sq. ft
Included: Yes

Heated: Yes
Finished: Yes
Enclosed: Yes
Contiguous: Yes
Permitted: Yes
Wet space: Yes
Addition: No
Conversion: No