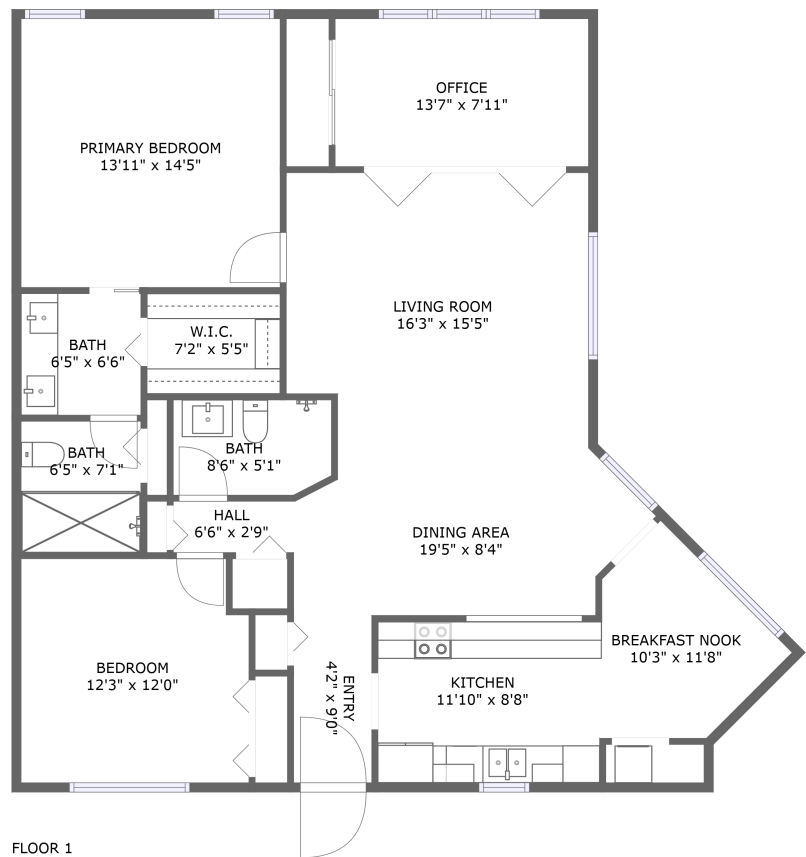
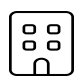




**3078 Eastland Boulevard, Northwood,
Clearwater, Pinellas County, Florida, United**





Property Summary


 **1** floors

 **2** bedrooms

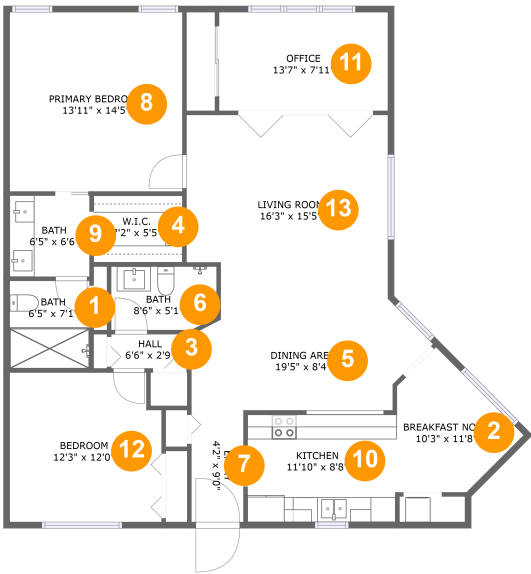
 **2** bathrooms

 **1,365** total sqft

 **0** garages

 **1,365** Gross Living Area sqft

3078 Eastland Boulevard, Northwood,
Clearwater, Pinellas County, Florida, United



Room Dimensions

Floor 1 Total sqft: 1365 Living area: 1365

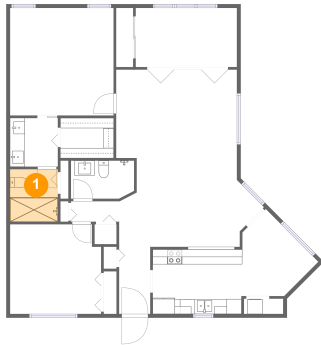
#	Room name	Dimensions	Area (sqft)	Counted as Living Area
1	Bath	6'5" x 7'1"	45 sq. ft	Yes
2	Breakfast Nook	10'3" x 11'8"	80 sq. ft	Yes
3	Hall	6'6" x 2'9"	18 sq. ft	Yes
4	W.i.c.	7'2" x 5'5"	38 sq. ft	Yes
5	Dining Area	19'5" x 8'4"	145 sq. ft	Yes
6	Bath	8'6" x 5'1"	42 sq. ft	Yes
7	Entry	4'2" x 9'0"	38 sq. ft	Yes
8	Primary Bedroom	13'11" x 14'5"	201 sq. ft	Yes
9	Bath	6'5" x 6'6"	42 sq. ft	Yes
10	Kitchen	11'10" x 8'8"	103 sq. ft	Yes
11	Office	13'7" x 7'11"	108 sq. ft	Yes

**3078 Eastland Boulevard, Northwood,
Clearwater, Pinellas County, Florida, United**

#	Room name	Dimensions	Area (sqft)	Counted as Living Area
12	Bedroom	12'3" x 12'0"	144 sq. ft	Yes
13	Living Room	16'3" x 15'5"	240 sq. ft	Yes

3078 Eastland Boulevard, Northwood, Clearwater, Pinellas County, Florida, United

1 Floor 1 - Bath



Dimensions: 6'5" x 7'1"
Area: 45 sq. ft
Counted as Living Area:
Yes

Heated: Yes
Finished: Yes
Enclosed: Yes
Contiguous:
Yes
Permitted: Yes
Wet Space: Yes
Addition: No
Conversion: No

2 Floor 1 - Breakfast Nook



Dimensions: 10'3" x 11'8"
Area: 80 sq. ft
Counted as Living Area:
Yes

Heated: Yes
Finished: Yes
Enclosed: Yes
Contiguous:
Yes
Permitted: Yes
Wet Space: No
Addition: No
Conversion: No

3078 Eastland Boulevard, Northwood, Clearwater, Pinellas County, Florida, United

3 Floor 1 - Hall



Dimensions: 6'6" x 2'9"
Area: 18 sq. ft
Counted as Living Area:
Yes

Heated: Yes
Finished: Yes
Enclosed: Yes
Contiguous:
Yes
Permitted: Yes
Wet Space: No
Addition: No
Conversion: No

4 Floor 1 - W.i.c.



Dimensions: 7'2" x 5'5"
Area: 38 sq. ft
Counted as Living Area:
Yes

Heated: Yes
Finished: Yes
Enclosed: Yes
Contiguous:
Yes
Permitted: Yes
Wet Space: No
Addition: No
Conversion: No

5 Floor 1 - Dining Area



Dimensions: 19'5" x 8'4"
Area: 145 sq. ft
Counted as Living Area:
Yes

Heated: Yes
Finished: Yes
Enclosed: Yes
Contiguous:
Yes
Permitted: Yes
Wet Space: No
Addition: No
Conversion: No

3078 Eastland Boulevard, Northwood, Clearwater, Pinellas County, Florida, United

6 Floor 1 - Bath



Dimensions: 8'6" x 5'1"
Area: 42 sq. ft
Counted as Living Area:
Yes

Heated: Yes
Finished: Yes
Enclosed: Yes
Contiguous:
Yes
Permitted: Yes
Wet Space: Yes
Addition: No
Conversion: No

7 Floor 1 - Entry



Dimensions: 4'2" x 9'0"
Area: 38 sq. ft
Counted as Living Area:
Yes

Heated: Yes
Finished: Yes
Enclosed: Yes
Contiguous:
Yes
Permitted: Yes
Wet Space: No
Addition: No
Conversion: No

8 Floor 1 - Primary Bedroom



Dimensions: 13'11" x 14'5"
Area: 201 sq. ft
Counted as Living Area:
Yes

Heated: Yes
Finished: Yes
Enclosed: Yes
Contiguous:
Yes
Permitted: Yes
Wet Space: No
Addition: No
Conversion: No

**3078 Eastland Boulevard, Northwood,
Clearwater, Pinellas County, Florida, United****9 Floor 1 - Bath**

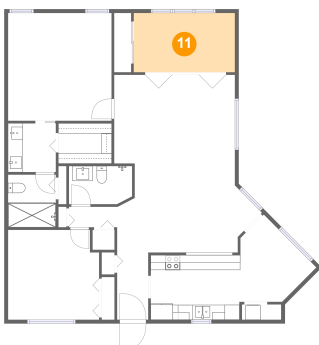
Dimensions: 6'5" x 6'6"
Area: 42 sq. ft
Counted as Living Area:
Yes

Heated: Yes
Finished: Yes
Enclosed: Yes
Contiguous:
Yes
Permitted: Yes
Wet Space: Yes
Addition: No
Conversion: No

10 Floor 1 - Kitchen

Dimensions: 11'10" x 8'8"
Area: 103 sq. ft
Counted as Living Area:
Yes

Heated: Yes
Finished: Yes
Enclosed: Yes
Contiguous:
Yes
Permitted: Yes
Wet Space: No
Addition: No
Conversion: No

11 Floor 1 - Office

Dimensions: 13'7" x 7'11"
Area: 108 sq. ft
Counted as Living Area:
Yes

Heated: Yes
Finished: Yes
Enclosed: Yes
Contiguous:
Yes
Permitted: Yes
Wet Space: No
Addition: No
Conversion: No

**3078 Eastland Boulevard, Northwood,
Clearwater, Pinellas County, Florida, United****12 Floor 1 - Bedroom**

Dimensions: 12'3" x 12'0"
Area: 144 sq. ft
Counted as Living Area:
Yes

Heated: Yes
Finished: Yes
Enclosed: Yes
Contiguous:
Yes
Permitted: Yes
Wet Space: No
Addition: No
Conversion: No

13 Floor 1 - Living Room

Dimensions: 16'3" x 15'5"
Area: 240 sq. ft
Counted as Living Area:
Yes

Heated: Yes
Finished: Yes
Enclosed: Yes
Contiguous:
Yes
Permitted: Yes
Wet Space: No
Addition: No
Conversion: No