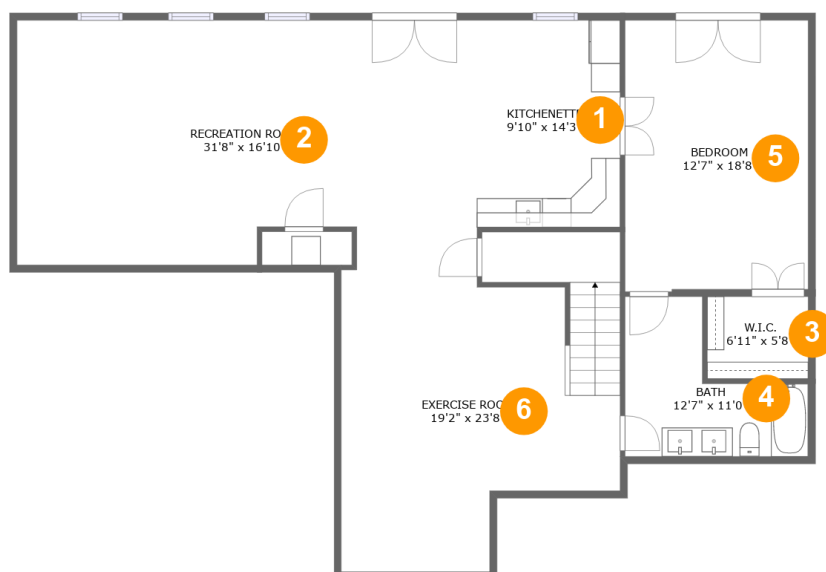


104 Raven Stone Court, Waterton, Lynchburg, Lynchburg city, Virginia, United States, 24503



Room dimensions

Floor 1

Total sqft: 1534 Living area: 1517

#		Dimensions	sqft	Counted as living area
1	Kitchenette	9'10" x 14'3"	140 sq. ft	Yes
2	Recreation Room	31'8" x 16'10"	493 sq. ft	Yes
3	W.I.C.	6'11" x 5'8"	39 sq. ft	Yes
4	Bath	12'7" x 11'0"	95 sq. ft	Yes
5	Bedroom	12'7" x 18'8"	234 sq. ft	Yes
6	Exercise Room	19'2" x 23'8"	394 sq. ft	Yes

104 Raven Stone Court, Waterton, Lynchburg, Lynchburg city, Virginia, United States, 24503



Room dimensions

Floor 2

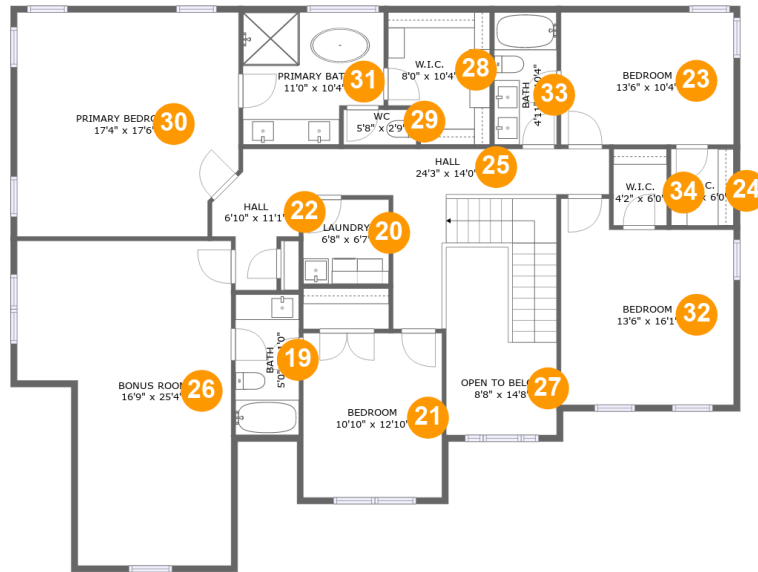
Total sqft: 2674 Living area: 1879

#		Dimensions	sqft	Counted as living area
7	Garage	21'11" x 25'2"	552 sq. ft	No
8	Hall	12'10" x 12'1"	151 sq. ft	Yes
9	Bath	6'7" x 12'1"	66 sq. ft	Yes
10	Kitchen	20'8" x 14'2"	284 sq. ft	Yes
11	Porch	9'0" x 4'11"	44 sq. ft	No
12	Bedroom / Office	10'10" x 10'11"	118 sq. ft	Yes
13	Family Room	22'1" x 17'6"	382 sq. ft	Yes
14	Dining Room	13'6" x 14'3"	192 sq. ft	Yes
15	Deck	12'9" x 13'5"	172 sq. ft	No
16	Living Room	13'10" x 16'1"	221 sq. ft	Yes
17	Foyer	8'8" x 6'4"	55 sq. ft	Yes

104 Raven Stone Court, Waterton, Lynchburg, Lynchburg city, Virginia, United States, 24503

#		Dimensions	sqft	Counted as living area
18	Sunroom	17'11" x 13'3"	237 sq. ft	Yes

104 Raven Stone Court, Waterton, Lynchburg, Lynchburg city, Virginia, United States, 24503



Room dimensions

Floor 3

Total sqft: 2079

Living area: 1975

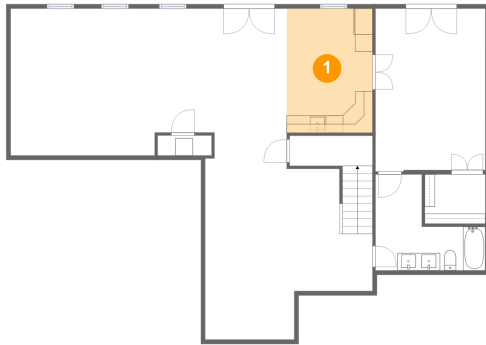
#		Dimensions	sqft	Counted as living area
19	Bath	5'0" x 11'0"	55 sq. ft	Yes
20	Laundry	6'8" x 6'7"	44 sq. ft	Yes
21	Bedroom	10'10" x 12'10"	139 sq. ft	Yes
22	Hall	6'10" x 11'1"	53 sq. ft	Yes
23	Bedroom	13'6" x 10'4"	140 sq. ft	Yes
24	W.I.C.	4'11" x 6'0"	29 sq. ft	Yes
25	Hall	24'3" x 14'0"	194 sq. ft	Yes
26	Bonus Room	16'9" x 25'4"	356 sq. ft	Yes
27	Open To Below	8'8" x 14'8"	99 sq. ft	No
28	W.I.C.	8'0" x 10'4"	75 sq. ft	Yes
29	WC	5'8" x 2'9"	15 sq. ft	Yes

**104 Raven Stone Court, Waterton, Lynchburg,
Lynchburg city, Virginia, United States, 24503**

#		Dimensions	sqft	Counted as living area
30	Primary Bedroom	17'4" x 17'6"	294 sq. ft	Yes
31	Primary Bath	11'0" x 10'4"	103 sq. ft	Yes
32	Bedroom	13'6" x 16'1"	194 sq. ft	Yes
33	Bath	4'11" x 10'4"	51 sq. ft	Yes
34	W.I.C.	4'2" x 6'0"	25 sq. ft	Yes

104 Raven Stone Court, Waterton, Lynchburg, Lynchburg city, Virginia, United States, 24503

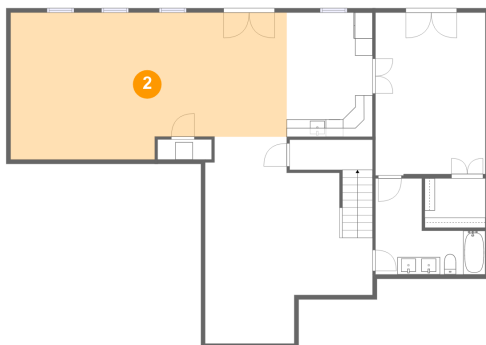
1 Floor 1 - Kitchenette



Dimensions: 9'10" x 14'3"
Area: 140 sq. ft
Counted as living area: Yes

Heated: Yes
Finished: Yes
Enclosed: Yes
Contiguous: Yes
Permitted: Yes
Wet space: No
Addition: No
Conversion: No

2 Floor 1 - Recreation Room

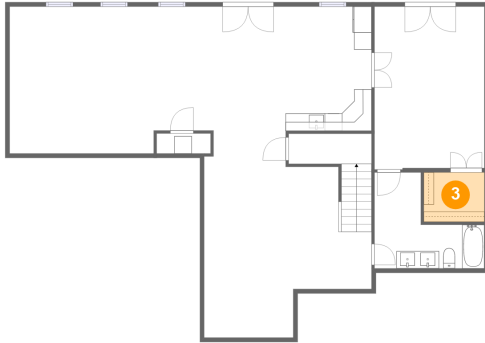


Dimensions: 31'8" x 16'10"
Area: 493 sq. ft
Counted as living area: Yes

Heated: Yes
Finished: Yes
Enclosed: Yes
Contiguous: Yes
Permitted: Yes
Wet space: No
Addition: No
Conversion: No

104 Raven Stone Court, Waterton, Lynchburg, Lynchburg city, Virginia, United States, 24503

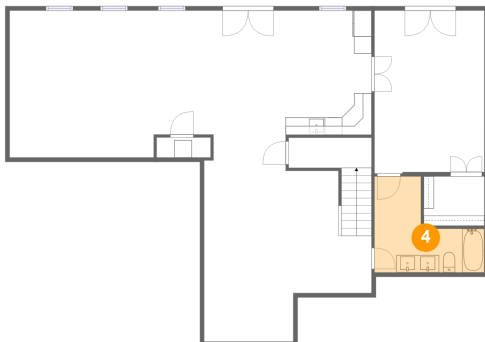
3 Floor 1 - W.I.C.



Dimensions: 6'11" x 5'8"
Area: 39 sq. ft
Counted as living area: Yes

Heated: Yes
Finished: Yes
Enclosed: Yes
Contiguous: Yes
Permitted: Yes
Wet space: No
Addition: No
Conversion: No

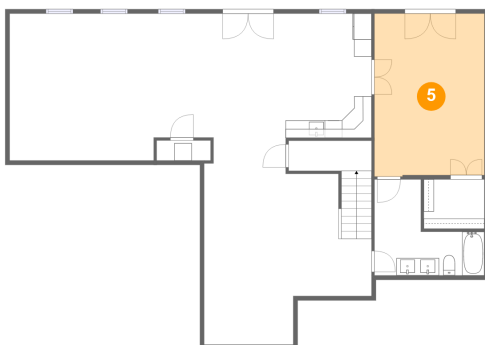
4 Floor 1 - Bath



Dimensions: 12'7" x 11'0"
Area: 95 sq. ft
Counted as living area: Yes

Heated: Yes
Finished: Yes
Enclosed: Yes
Contiguous: Yes
Permitted: Yes
Wet space: Yes
Addition: No
Conversion: No

5 Floor 1 - Bedroom

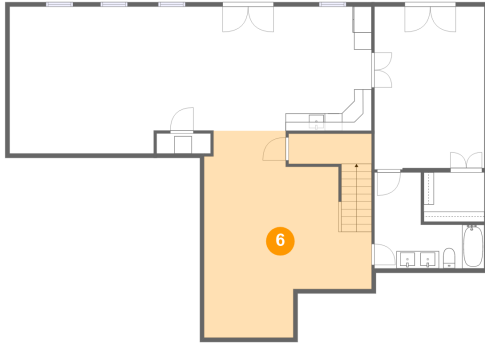


Dimensions: 12'7" x 18'8"
Area: 234 sq. ft
Counted as living area: Yes

Heated: Yes
Finished: Yes
Enclosed: Yes
Contiguous: Yes
Permitted: Yes
Wet space: No
Addition: No
Conversion: No

104 Raven Stone Court, Waterton, Lynchburg, Lynchburg city, Virginia, United States, 24503

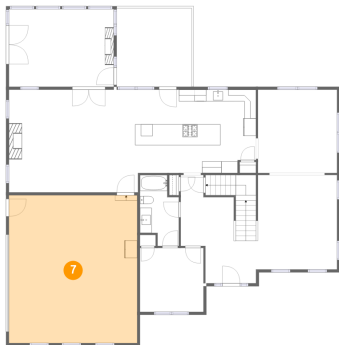
6 Floor 1 - Exercise Room



Dimensions: 19'2" x 23'8"
Area: 394 sq. ft
Counted as living area: Yes

Heated: Yes
Finished: Yes
Enclosed: Yes
Contiguous: Yes
Permitted: Yes
Wet space: No
Addition: No
Conversion: No

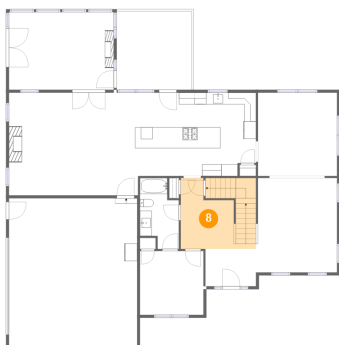
7 Floor 2 - Garage



Dimensions: 21'11" x 25'2"
Area: 552 sq. ft
Counted as living area: No

Heated: No
Finished: No
Enclosed: Yes
Contiguous: Yes
Permitted: Yes
Wet space: No
Addition: No
Conversion: No

8 Floor 2 - Hall



Dimensions: 12'10" x 12'1"
Area: 151 sq. ft
Counted as living area: Yes

Heated: Yes
Finished: Yes
Enclosed: Yes
Contiguous: Yes
Permitted: Yes
Wet space: No
Addition: No
Conversion: No

104 Raven Stone Court, Waterton, Lynchburg, Lynchburg city, Virginia, United States, 24503

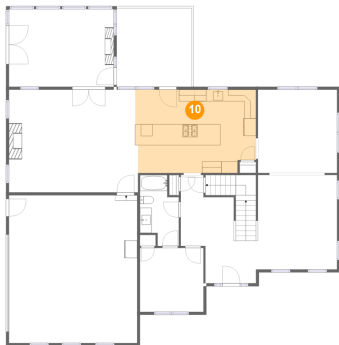
9 Floor 2 - Bath



Dimensions: 6'7" x 12'1"
Area: 66 sq. ft
Counted as living area: Yes

Heated: Yes
Finished: Yes
Enclosed: Yes
Contiguous: Yes
Permitted: Yes
Wet space: Yes
Addition: No
Conversion: No

10 Floor 2 - Kitchen



Dimensions: 20'8" x 14'2"
Area: 284 sq. ft
Counted as living area: Yes

Heated: Yes
Finished: Yes
Enclosed: Yes
Contiguous: Yes
Permitted: Yes
Wet space: No
Addition: No
Conversion: No

11 Floor 2 - Porch



Dimensions: 9'0" x 4'11"
Area: 44 sq. ft
Counted as living area: No

Heated: No
Finished: Yes
Enclosed: No
Contiguous: Yes
Permitted: Yes
Wet space: No
Addition: No
Conversion: No

104 Raven Stone Court, Waterton, Lynchburg, Lynchburg city, Virginia, United States, 24503

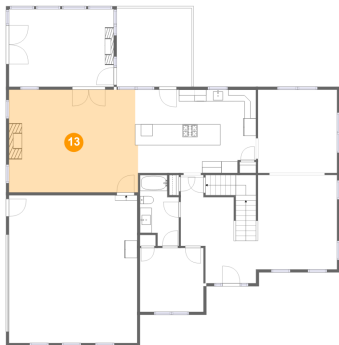
12 Floor 2 - Bedroom / Office



Dimensions: 10'10" x 10'11"
Area: 118 sq. ft
Counted as living area: Yes

Heated: Yes
Finished: Yes
Enclosed: Yes
Contiguous: Yes
Permitted: Yes
Wet space: No
Addition: No
Conversion: No

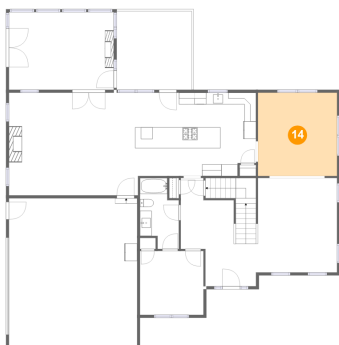
13 Floor 2 - Family Room



Dimensions: 22'1" x 17'6"
Area: 382 sq. ft
Counted as living area: Yes

Heated: Yes
Finished: Yes
Enclosed: Yes
Contiguous: Yes
Permitted: Yes
Wet space: No
Addition: No
Conversion: No

14 Floor 2 - Dining Room



Dimensions: 13'6" x 14'3"
Area: 192 sq. ft
Counted as living area: Yes

Heated: Yes
Finished: Yes
Enclosed: Yes
Contiguous: Yes
Permitted: Yes
Wet space: No
Addition: No
Conversion: No

104 Raven Stone Court, Waterton, Lynchburg, Lynchburg city, Virginia, United States, 24503

15 Floor 2 - Deck



Dimensions: 12'9" x 13'5"
Area: 172 sq. ft
Counted as living area: No

Heated: No
Finished: Yes
Enclosed: No
Contiguous: No
Permitted: Yes
Wet space: No
Addition: No
Conversion: No

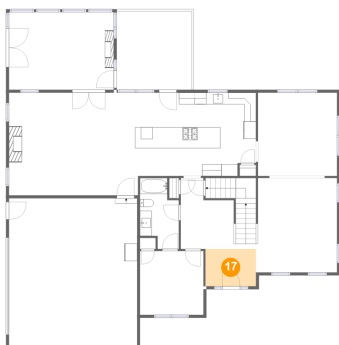
16 Floor 2 - Living Room



Dimensions: 13'10" x 16'1"
Area: 221 sq. ft
Counted as living area: Yes

Heated: Yes
Finished: Yes
Enclosed: Yes
Contiguous: Yes
Permitted: Yes
Wet space: No
Addition: No
Conversion: No

17 Floor 2 - Foyer



Dimensions: 8'8" x 6'4"
Area: 55 sq. ft
Counted as living area: Yes

Heated: Yes
Finished: Yes
Enclosed: Yes
Contiguous: Yes
Permitted: Yes
Wet space: No
Addition: No
Conversion: No

104 Raven Stone Court, Waterton, Lynchburg, Lynchburg city, Virginia, United States, 24503

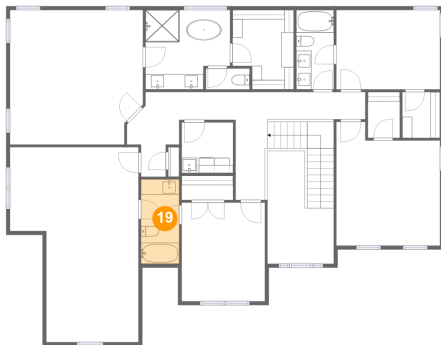
18 Floor 2 - Sunroom



Dimensions: 17'11" x 13'3"
Area: 237 sq. ft
Counted as living area: Yes

Heated: Yes
Finished: Yes
Enclosed: Yes
Contiguous: Yes
Permitted: Yes
Wet space: No
Addition: No
Conversion: No

19 Floor 3 - Bath



Dimensions: 5'0" x 11'0"
Area: 55 sq. ft
Counted as living area: Yes

Heated: Yes
Finished: Yes
Enclosed: Yes
Contiguous: Yes
Permitted: Yes
Wet space: Yes
Addition: No
Conversion: No

20 Floor 3 - Laundry



Dimensions: 6'8" x 6'7"
Area: 44 sq. ft
Counted as living area: Yes

Heated: Yes
Finished: Yes
Enclosed: Yes
Contiguous: Yes
Permitted: Yes
Wet space: No
Addition: No
Conversion: No

104 Raven Stone Court, Waterton, Lynchburg, Lynchburg city, Virginia, United States, 24503

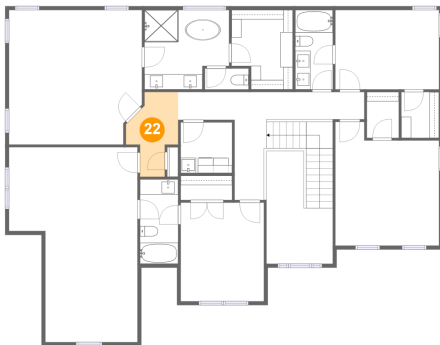
21 Floor 3 - Bedroom



Dimensions: 10'10" x 12'10"
Area: 139 sq. ft
Counted as living area: Yes

Heated: Yes
Finished: Yes
Enclosed: Yes
Contiguous: Yes
Permitted: Yes
Wet space: No
Addition: No
Conversion: No

22 Floor 3 - Hall



Dimensions: 6'10" x 11'1"
Area: 53 sq. ft
Counted as living area: Yes

Heated: Yes
Finished: Yes
Enclosed: Yes
Contiguous: Yes
Permitted: Yes
Wet space: No
Addition: No
Conversion: No

23 Floor 3 - Bedroom



Dimensions: 13'6" x 10'4"
Area: 140 sq. ft
Counted as living area: Yes

Heated: Yes
Finished: Yes
Enclosed: Yes
Contiguous: Yes
Permitted: Yes
Wet space: No
Addition: No
Conversion: No

104 Raven Stone Court, Waterton, Lynchburg, Lynchburg city, Virginia, United States, 24503

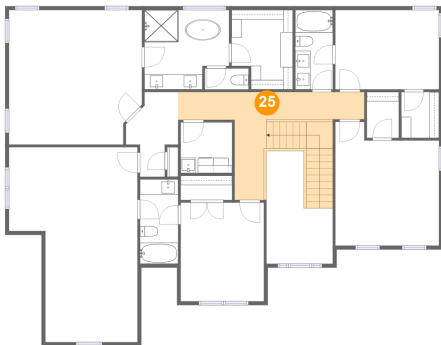
24 Floor 3 - W.I.C.



Dimensions: 4'11" x 6'0"
Area: 29 sq. ft
Counted as living area: Yes

Heated: Yes
Finished: Yes
Enclosed: Yes
Contiguous: Yes
Permitted: Yes
Wet space: No
Addition: No
Conversion: No

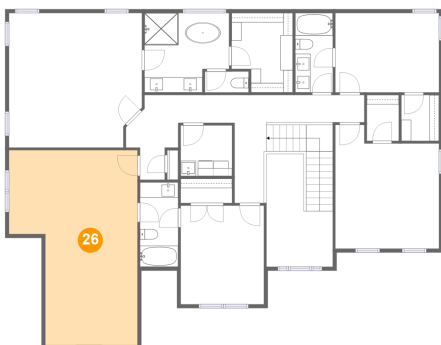
25 Floor 3 - Hall



Dimensions: 24'3" x 14'0"
Area: 194 sq. ft
Counted as living area: Yes

Heated: Yes
Finished: Yes
Enclosed: Yes
Contiguous: Yes
Permitted: Yes
Wet space: No
Addition: No
Conversion: No

26 Floor 3 - Bonus Room

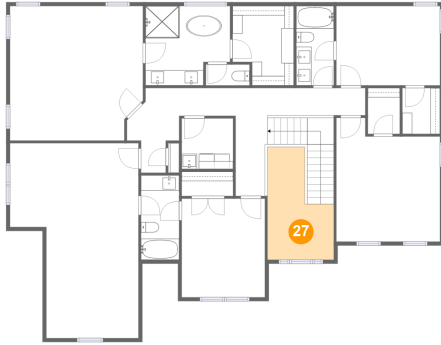


Dimensions: 16'9" x 25'4"
Area: 356 sq. ft
Counted as living area: Yes

Heated: Yes
Finished: Yes
Enclosed: Yes
Contiguous: Yes
Permitted: Yes
Wet space: No
Addition: No
Conversion: No

104 Raven Stone Court, Waterton, Lynchburg, Lynchburg city, Virginia, United States, 24503

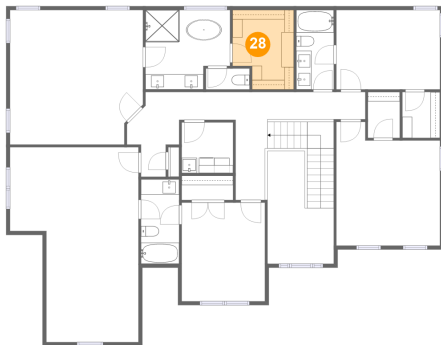
27 Floor 3 - Open To Below



Dimensions: 8'8" x 14'8"
Area: 99 sq. ft
Counted as living area: No

Heated: No
Finished: No
Enclosed: No
Contiguous: Yes
Permitted: No
Wet space: No
Addition: No
Conversion: No

28 Floor 3 - W.I.C.



Dimensions: 8'0" x 10'4"
Area: 75 sq. ft
Counted as living area: Yes

Heated: Yes
Finished: Yes
Enclosed: Yes
Contiguous: Yes
Permitted: Yes
Wet space: No
Addition: No
Conversion: No

29 Floor 3 - WC



Dimensions: 5'8" x 2'9"
Area: 15 sq. ft
Counted as living area: Yes

Heated: Yes
Finished: Yes
Enclosed: Yes
Contiguous: Yes
Permitted: Yes
Wet space: Yes
Addition: No
Conversion: No

104 Raven Stone Court, Waterton, Lynchburg, Lynchburg city, Virginia, United States, 24503

30 Floor 3 - Primary Bedroom



Dimensions: 17'4" x 17'6"
Area: 294 sq. ft
Counted as living area: Yes

Heated: Yes
Finished: Yes
Enclosed: Yes
Contiguous: Yes
Permitted: Yes
Wet space: No
Addition: No
Conversion: No

31 Floor 3 - Primary Bath



Dimensions: 11'0" x 10'4"
Area: 103 sq. ft
Counted as living area: Yes

Heated: Yes
Finished: Yes
Enclosed: Yes
Contiguous: Yes
Permitted: Yes
Wet space: Yes
Addition: No
Conversion: No

32 Floor 3 - Bedroom

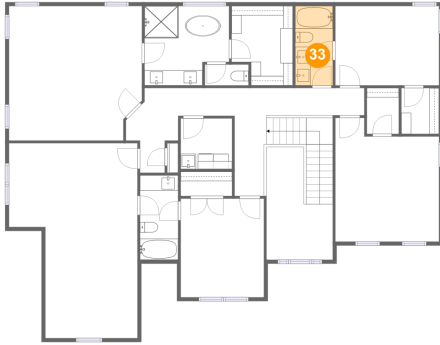


Dimensions: 13'6" x 16'1"
Area: 194 sq. ft
Counted as living area: Yes

Heated: Yes
Finished: Yes
Enclosed: Yes
Contiguous: Yes
Permitted: Yes
Wet space: No
Addition: No
Conversion: No

**104 Raven Stone Court, Waterton, Lynchburg,
Lynchburg city, Virginia, United States, 24503**

33 Floor 3 - Bath



Dimensions: 4'11" x 10'4"
Area: 51 sq. ft
Counted as living area: Yes

Heated: Yes
Finished: Yes
Enclosed: Yes
Contiguous: Yes
Permitted: Yes
Wet space: Yes
Addition: No
Conversion: No

34 Floor 3 - W.I.C.



Dimensions: 4'2" x 6'0"
Area: 25 sq. ft
Counted as living area: Yes

Heated: Yes
Finished: Yes
Enclosed: Yes
Contiguous: Yes
Permitted: Yes
Wet space: No
Addition: No
Conversion: No