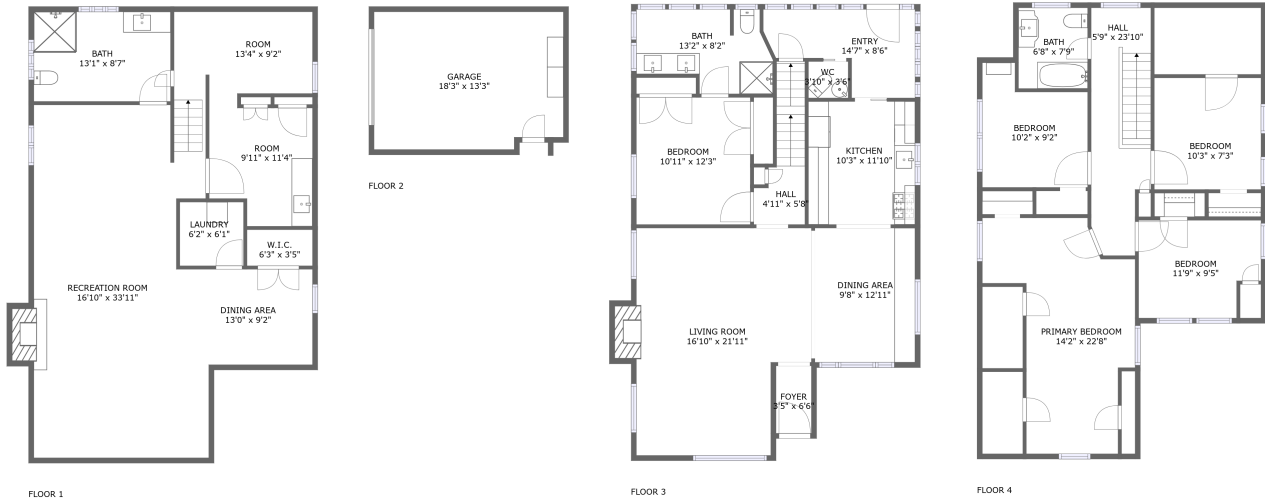






# 1584 Southeast Lexington Street, Sellwood, Portland, Multnomah County, Oregon, United

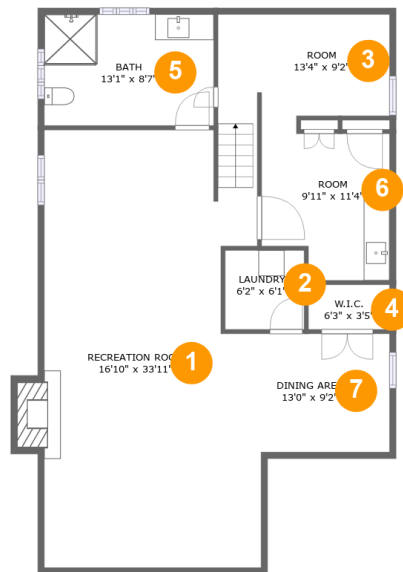


## Property Summary

 **1** garages     **5** bedrooms     **3** bathrooms     **1** half baths

 **4** floors     **3,194** Gross Living Area sqft     **3,591** total sqft

# 1584 Southeast Lexington Street, Sellwood, Portland, Multnomah County, Oregon, United



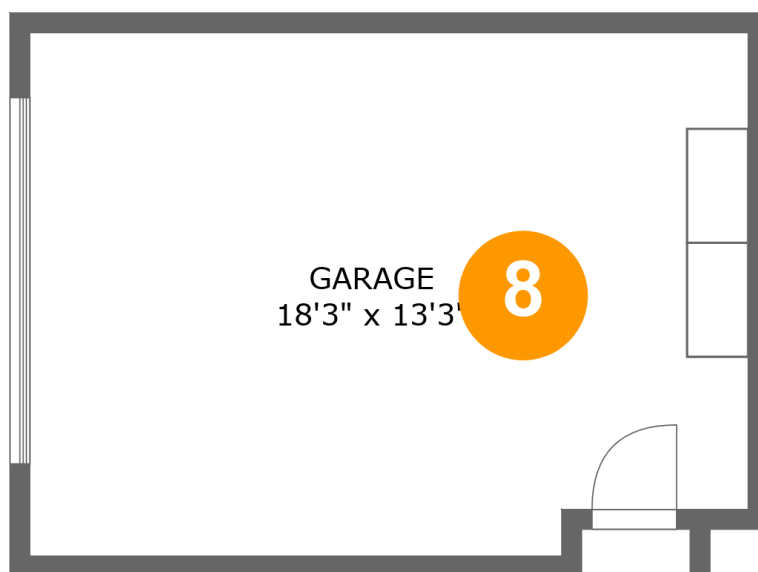
## Room Dimensions

Floor 1

Total sqft: 1142

Living area: 1100

#	Room name	Dimensions	Area (sqft)	Counted as Living Area
1	Recreation Room	16'10" x 33'11"	500 sq. ft	Yes
2	Laundry	6'2" x 6'1"	38 sq. ft	Yes
3	Room	13'4" x 9'2"	102 sq. ft	Yes
4	W.i.c.	6'3" x 3'5"	22 sq. ft	Yes
5	Bath	13'1" x 8'7"	113 sq. ft	Yes
6	Room	9'11" x 11'4"	103 sq. ft	Yes
7	Dining Area	13'0" x 9'2"	120 sq. ft	Yes

**1584 Southeast Lexington Street, Sellwood,  
Portland, Multnomah County, Oregon, United****Room Dimensions**

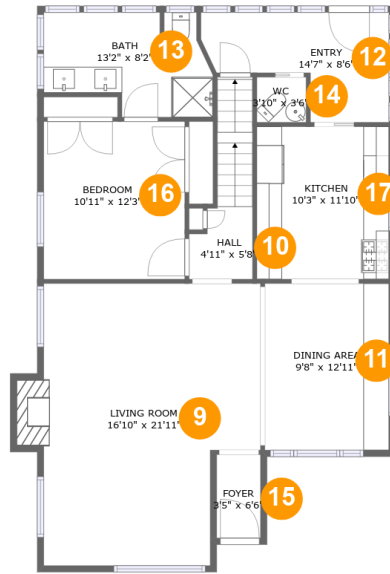
Floor 2

Total sqft: 268

Living area: 0

#	Room name	Dimensions	Area (sqft)	Counted as Living Area
8	Garage	18'3" x 13'3"	236 sq. ft	No

# 1584 Southeast Lexington Street, Sellwood, Portland, Multnomah County, Oregon, United



## Room Dimensions

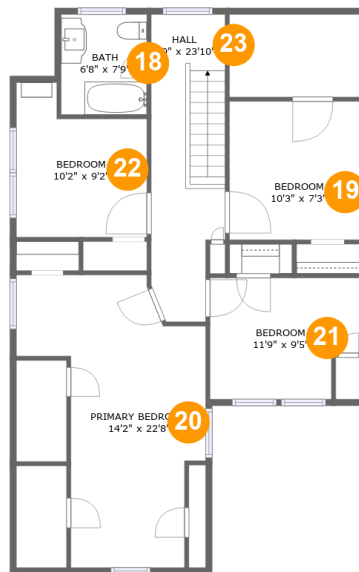
Floor 3

Total sqft: 1136

Living area: 1123

#	Room name	Dimensions	Area (sqft)	Counted as Living Area
9	Living Room	16'10" x 21'11"	344 sq. ft	Yes
10	Hall	4'11" x 5'8"	52 sq. ft	Yes
11	Dining Area	9'8" x 12'11"	125 sq. ft	Yes
12	Entry	14'7" x 8'6"	90 sq. ft	Yes
13	Bath	13'2" x 8'2"	90 sq. ft	Yes
14	Wc	3'10" x 3'6"	13 sq. ft	Yes
15	Foyer	3'5" x 6'6"	22 sq. ft	Yes
16	Bedroom	10'11" x 12'3"	134 sq. ft	Yes
17	Kitchen	10'3" x 11'10"	121 sq. ft	Yes

# 1584 Southeast Lexington Street, Sellwood, Portland, Multnomah County, Oregon, United



## Room Dimensions

Floor 4

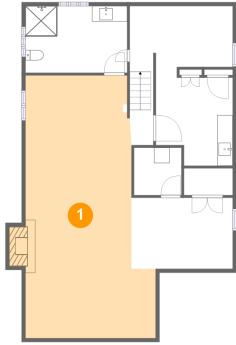
Total sqft: 1045

Living area: 971

#	Room name	Dimensions	Area (sqft)	Counted as Living Area
18	Bath	6'8" x 7'9"	52 sq. ft	Yes
19	Bedroom	10'3" x 7'3"	74 sq. ft	Yes
20	Primary Bedroom	14'2" x 22'8"	201 sq. ft	Yes
21	Bedroom	11'9" x 9'5"	102 sq. ft	Yes
22	Bedroom	10'2" x 9'2"	93 sq. ft	Yes
23	Hall	5'9" x 23'10"	126 sq. ft	Yes

# 1584 Southeast Lexington Street, Sellwood, Portland, Multnomah County, Oregon, United

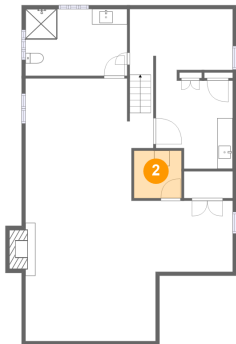
## 1 Floor 1 - Recreation Room



Dimensions: 16'10" x 33'11"  
Area: 500 sq. ft  
Counted as Living Area:  
Yes

Heated: Yes  
Finished: Yes  
Enclosed: Yes  
Contiguous:  
Yes  
Permitted: Yes  
Wet Space: No  
Addition: No  
Conversion: No

## 2 Floor 1 - Laundry

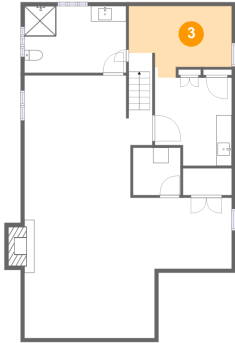


Dimensions: 6'2" x 6'1"  
Area: 38 sq. ft  
Counted as Living Area:  
Yes

Heated: Yes  
Finished: Yes  
Enclosed: Yes  
Contiguous:  
Yes  
Permitted: Yes  
Wet Space: No  
Addition: No  
Conversion: No

# 1584 Southeast Lexington Street, Sellwood, Portland, Multnomah County, Oregon, United

## 3 Floor 1 - Room



Dimensions: 13'4" x 9'2"  
Area: 102 sq. ft  
Counted as Living Area:  
Yes

Heated: Yes  
Finished: Yes  
Enclosed: Yes  
Contiguous:  
Yes  
Permitted: Yes  
Wet Space: No  
Addition: No  
Conversion: No

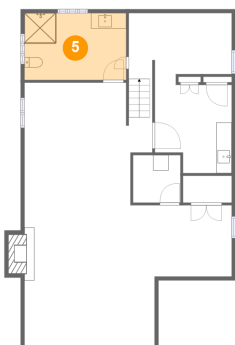
## 4 Floor 1 - W.i.c.



Dimensions: 6'3" x 3'5"  
Area: 22 sq. ft  
Counted as Living Area:  
Yes

Heated: Yes  
Finished: Yes  
Enclosed: Yes  
Contiguous:  
Yes  
Permitted: Yes  
Wet Space: No  
Addition: No  
Conversion: No

## 5 Floor 1 - Bath

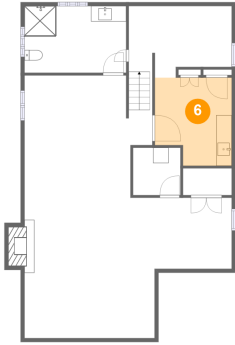


Dimensions: 13'1" x 8'7"  
Area: 113 sq. ft  
Counted as Living Area:  
Yes

Heated: Yes  
Finished: Yes  
Enclosed: Yes  
Contiguous:  
Yes  
Permitted: Yes  
Wet Space: Yes  
Addition: No  
Conversion: No

# 1584 Southeast Lexington Street, Sellwood, Portland, Multnomah County, Oregon, United

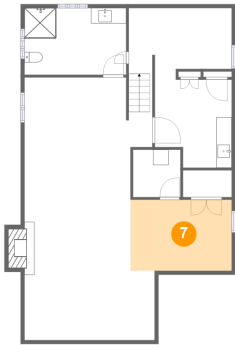
## 6 Floor 1 - Room



Dimensions: 9'11" x 11'4"  
Area: 103 sq. ft  
Counted as Living Area:  
Yes

Heated: Yes  
Finished: Yes  
Enclosed: Yes  
Contiguous:  
Yes  
Permitted: Yes  
Wet Space: No  
Addition: No  
Conversion: No

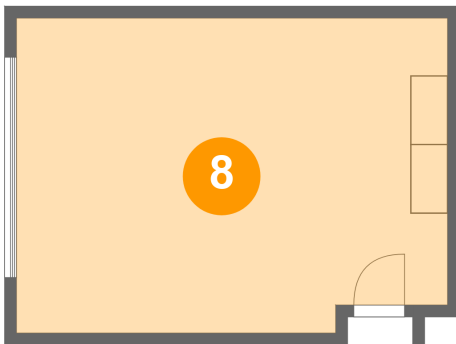
## 7 Floor 1 - Dining Area



Dimensions: 13'0" x 9'2"  
Area: 120 sq. ft  
Counted as Living Area:  
Yes

Heated: Yes  
Finished: Yes  
Enclosed: Yes  
Contiguous:  
Yes  
Permitted: Yes  
Wet Space: No  
Addition: No  
Conversion: No

## 8 Floor 2 - Garage



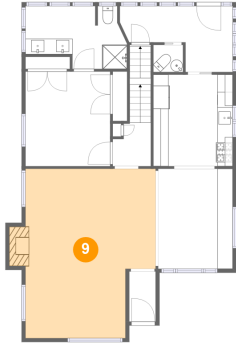
Dimensions: 18'3" x 13'3"  
Area: 236 sq. ft  
Counted as Living Area: No

Heated: No  
Finished: No  
Enclosed: Yes  
Contiguous: Yes  
Permitted: Yes  
Wet Space: No  
Addition: No  
Conversion: No



# 1584 Southeast Lexington Street, Sellwood, Portland, Multnomah County, Oregon, United

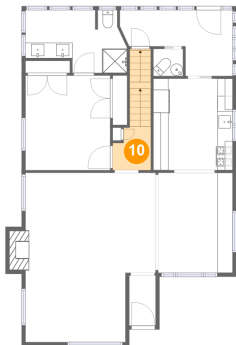
## 9 Floor 3 - Living Room



Dimensions: 16'10" x 21'11"  
Area: 344 sq. ft  
Counted as Living Area:  
Yes

Heated: Yes  
Finished: Yes  
Enclosed: Yes  
Contiguous:  
Yes  
Permitted: Yes  
Wet Space: No  
Addition: No  
Conversion: No

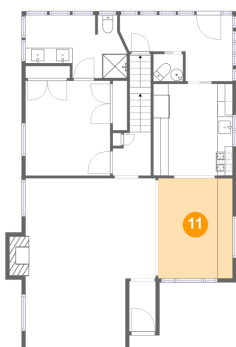
## 10 Floor 3 - Hall



Dimensions: 4'11" x 5'8"  
Area: 52 sq. ft  
Counted as Living Area:  
Yes

Heated: Yes  
Finished: Yes  
Enclosed: Yes  
Contiguous:  
Yes  
Permitted: Yes  
Wet Space: No  
Addition: No  
Conversion: No

## 11 Floor 3 - Dining Area

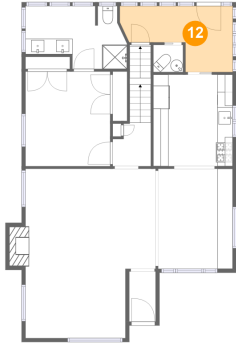


Dimensions: 9'8" x 12'11"  
Area: 125 sq. ft  
Counted as Living Area:  
Yes

Heated: Yes  
Finished: Yes  
Enclosed: Yes  
Contiguous:  
Yes  
Permitted: Yes  
Wet Space: No  
Addition: No  
Conversion: No

# 1584 Southeast Lexington Street, Sellwood, Portland, Multnomah County, Oregon, United

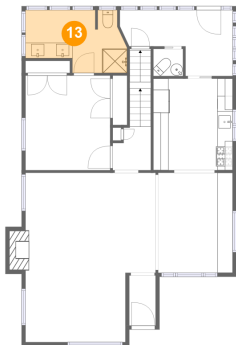
## 12 Floor 3 - Entry



Dimensions: 14'7" x 8'6"  
Area: 90 sq. ft  
Counted as Living Area:  
Yes

Heated: Yes  
Finished: Yes  
Enclosed: Yes  
Contiguous:  
Yes  
Permitted: Yes  
Wet Space: No  
Addition: No  
Conversion: No

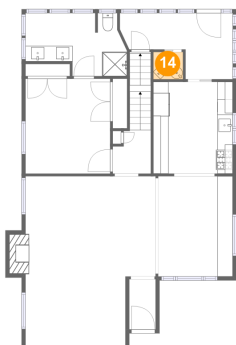
## 13 Floor 3 - Bath



Dimensions: 13'2" x 8'2"  
Area: 90 sq. ft  
Counted as Living Area:  
Yes

Heated: Yes  
Finished: Yes  
Enclosed: Yes  
Contiguous:  
Yes  
Permitted: Yes  
Wet Space: Yes  
Addition: No  
Conversion: No

## 14 Floor 3 - Wc

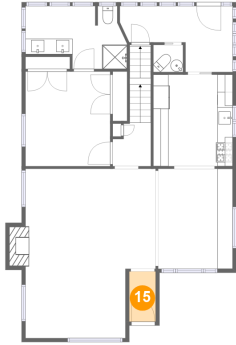


Dimensions: 3'10" x 3'6"  
Area: 13 sq. ft  
Counted as Living Area:  
Yes

Heated: Yes  
Finished: Yes  
Enclosed: Yes  
Contiguous:  
Yes  
Permitted: Yes  
Wet Space: Yes  
Addition: No  
Conversion: No

# 1584 Southeast Lexington Street, Sellwood, Portland, Multnomah County, Oregon, United

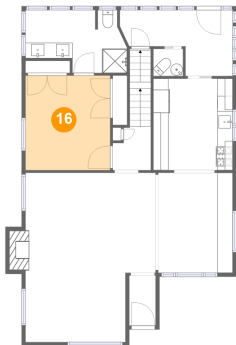
## 15 Floor 3 - Foyer



Dimensions: 3'5" x 6'6"  
Area: 22 sq. ft  
Counted as Living Area:  
Yes

Heated: Yes  
Finished: Yes  
Enclosed: Yes  
Contiguous:  
Yes  
Permitted: Yes  
Wet Space: No  
Addition: No  
Conversion: No

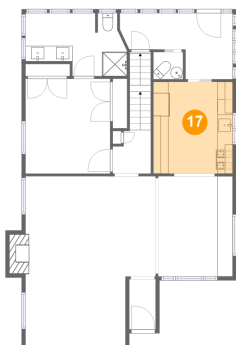
## 16 Floor 3 - Bedroom



Dimensions: 10'11" x 12'3"  
Area: 134 sq. ft  
Counted as Living Area:  
Yes

Heated: Yes  
Finished: Yes  
Enclosed: Yes  
Contiguous:  
Yes  
Permitted: Yes  
Wet Space: No  
Addition: No  
Conversion: No

## 17 Floor 3 - Kitchen

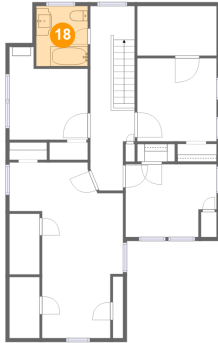


Dimensions: 10'3" x 11'10"  
Area: 121 sq. ft  
Counted as Living Area:  
Yes

Heated: Yes  
Finished: Yes  
Enclosed: Yes  
Contiguous:  
Yes  
Permitted: Yes  
Wet Space: No  
Addition: No  
Conversion: No

# 1584 Southeast Lexington Street, Sellwood, Portland, Multnomah County, Oregon, United

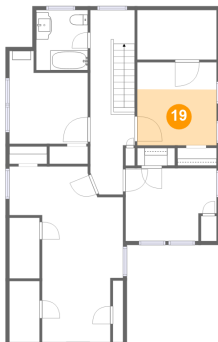
## 18 Floor 4 - Bath



Dimensions: 6'8" x 7'9"  
Area: 52 sq. ft  
Counted as Living Area:  
Yes

Heated: Yes  
Finished: Yes  
Enclosed: Yes  
Contiguous:  
Yes  
Permitted: Yes  
Wet Space: Yes  
Addition: No  
Conversion: No

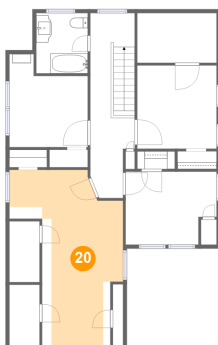
## 19 Floor 4 - Bedroom



Dimensions: 10'3" x 7'3"  
Area: 74 sq. ft  
Counted as Living Area:  
Yes

Heated: Yes  
Finished: Yes  
Enclosed: Yes  
Contiguous:  
Yes  
Permitted: Yes  
Wet Space: No  
Addition: No  
Conversion: No

## 20 Floor 4 - Primary Bedroom

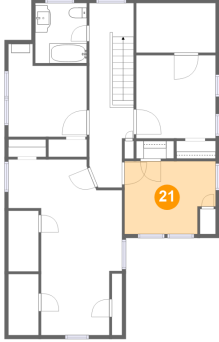


Dimensions: 14'2" x 22'8"  
Area: 201 sq. ft  
Counted as Living Area:  
Yes

Heated: Yes  
Finished: Yes  
Enclosed: Yes  
Contiguous:  
Yes  
Permitted: Yes  
Wet Space: No  
Addition: No  
Conversion: No

# 1584 Southeast Lexington Street, Sellwood, Portland, Multnomah County, Oregon, United

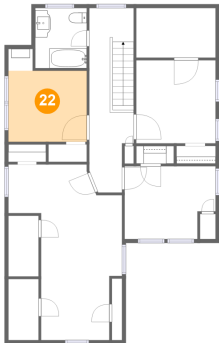
## 21 Floor 4 - Bedroom



Dimensions: 11'9" x 9'5"  
Area: 102 sq. ft  
Counted as Living Area:  
Yes

Heated: Yes  
Finished: Yes  
Enclosed: Yes  
Contiguous:  
Yes  
Permitted: Yes  
Wet Space: No  
Addition: No  
Conversion: No

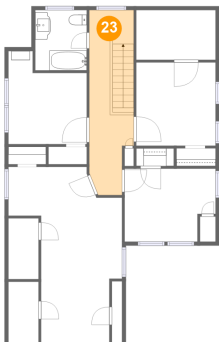
## 22 Floor 4 - Bedroom



Dimensions: 10'2" x 9'2"  
Area: 93 sq. ft  
Counted as Living Area:  
Yes

Heated: Yes  
Finished: Yes  
Enclosed: Yes  
Contiguous:  
Yes  
Permitted: Yes  
Wet Space: No  
Addition: No  
Conversion: No

## 23 Floor 4 - Hall



Dimensions: 5'9" x 23'10"  
Area: 126 sq. ft  
Counted as Living Area:  
Yes

Heated: Yes  
Finished: Yes  
Enclosed: Yes  
Contiguous:  
Yes  
Permitted: Yes  
Wet Space: No  
Addition: No  
Conversion: No