

The floor plan shows a large rectangular layout. On the left is a large rectangular area labeled 'GARAGE'. To its right is a 'FAMILY ROOM' which contains a bay window with diagonal hatching. Further right is a 'STORAGE' area. On the far right is an 'EXERCISE ROOM'. A central hallway connects these rooms, featuring a staircase with an arrow pointing right. The entire plan is enclosed by a thick black border representing walls. Dimensions are provided for each room, and a summary of total and excluded areas is at the bottom.

GARAGE  
12'9" X 24'1"

STORAGE  
26'0" X 11'3"

FAMILY ROOM  
13'10" X 15'9"

EXERCISE ROOM  
14'5" X 12'4"

**TOTAL: 1470 sq. ft**

FLOOR 1: 360 sq. ft, FLOOR 2: 1110 sq. ft

EXCLUDED AREAS: GARAGE: 307 sq. ft, STORAGE: 266 sq. ft, BAY WINDOW: 17 sq. ft,  
WALLS: 153 sq. ft

MEASUREMENTS ARE DEEMED HIGHLY RELIABLE BUT NOT GUARANTEED.

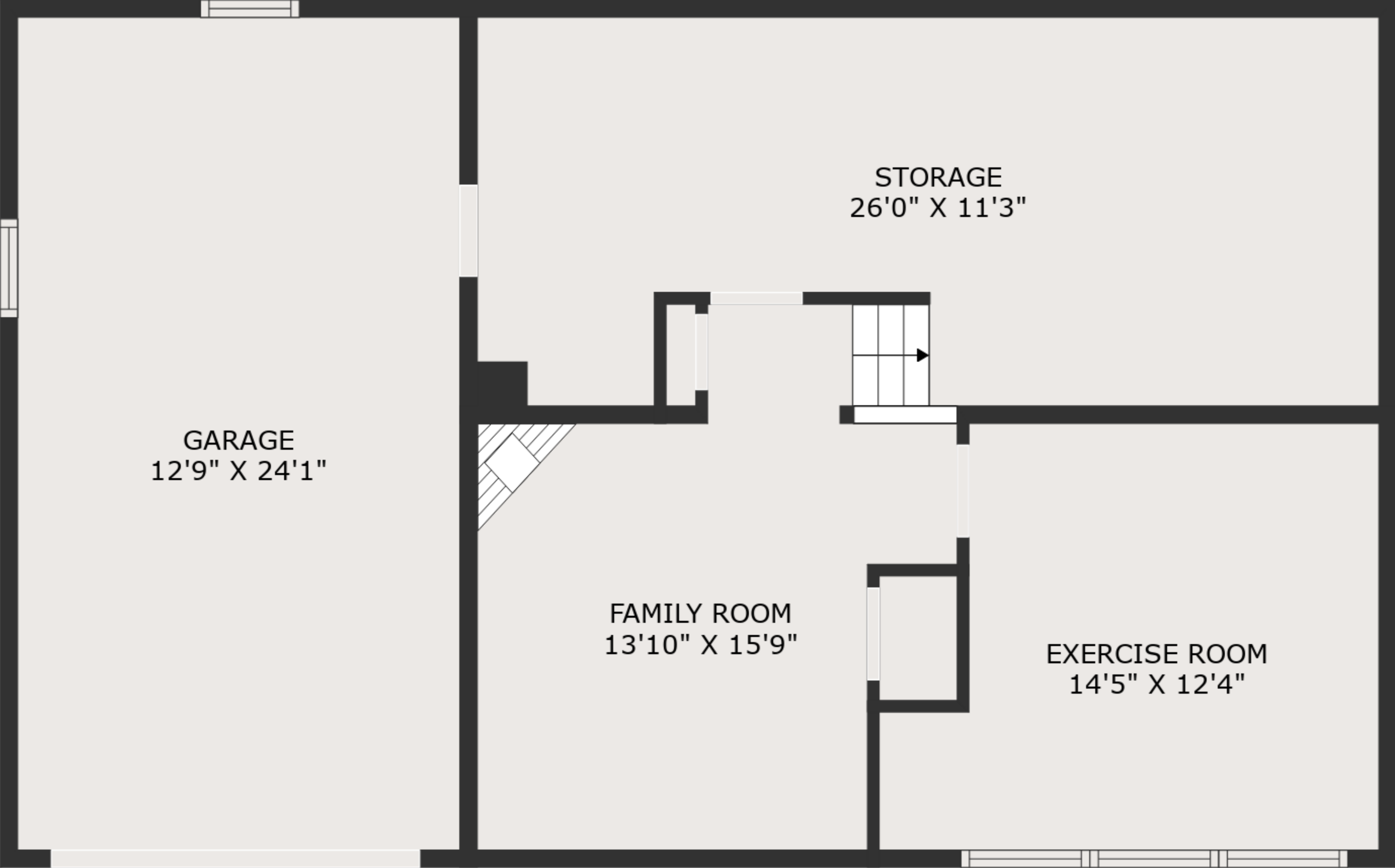


**TOTAL: 1470 sq. ft**  
FLOOR 1: 360 sq. ft, FLOOR 2: 1110 sq. ft  
EXCLUDED AREAS: GARAGE: 307 sq. ft, STORAGE: 266 sq. ft, BAY WINDOW: 17 sq. ft,  
WALLS: 153 sq. ft

MEASUREMENTS ARE DEEMED HIGHLY RELIABLE BUT NOT GUARANTEED.



FLOOR 2



FLOOR 1

**TOTAL: 1470 sq. ft**  
FLOOR 1: 360 sq. ft, FLOOR 2: 1110 sq. ft  
EXCLUDED AREAS: GARAGE: 307 sq. ft, STORAGE: 266 sq. ft, BAY WINDOW: 17 sq. ft,  
WALLS: 153 sq. ft

MEASUREMENTS ARE DEEMED HIGHLY RELIABLE BUT NOT GUARANTEED.