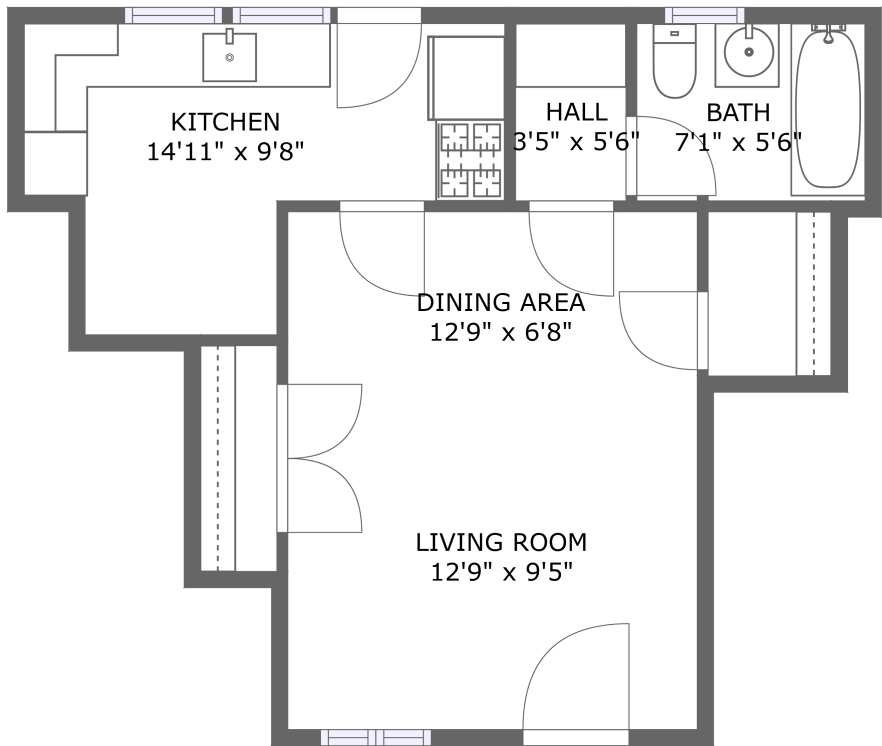


Home report

5188 Pickford St #2,Los Angeles,CA,US



FLOOR 1

Total Area: 471 sq. ft

Floor 1: 471 sq. ft

Excluded:

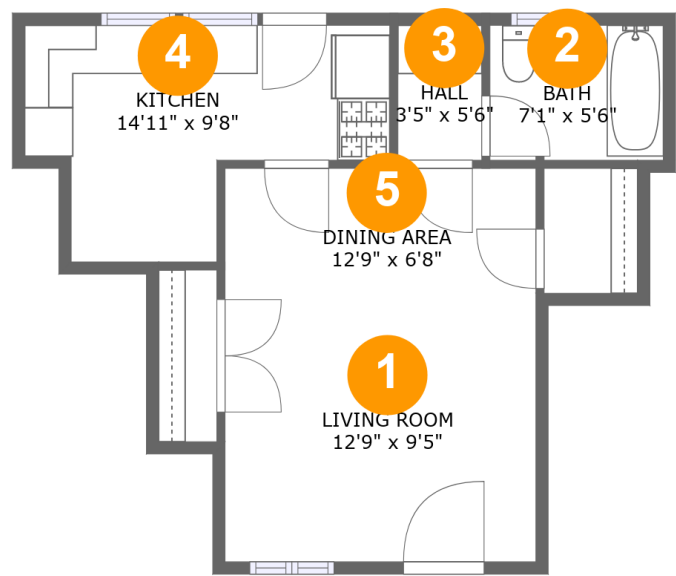
Property summary

 **1** Floors

 **1** Bathrooms

Home report

5188 Pickford St #2,Los Angeles,CA,US

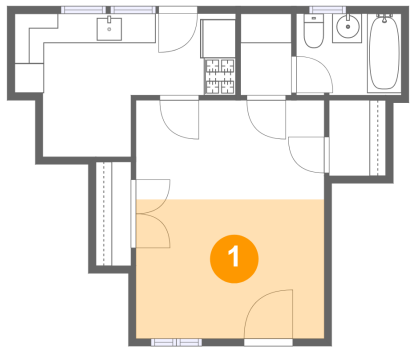


Room dimensions

Floor 1 Total:471sqft Excluded: 0sqft

#		Max Dimensions	sqft	Included
1	Living Room	12'9" x 9'5"	120 sq. ft	Yes
2	Bath	7'1" x 5'6"	39 sq. ft	Yes
3	Hall	3'5" x 5'6"	19 sq. ft	Yes
4	Kitchen	14'11" x 9'8"	107 sq. ft	Yes
5	Dining Area	12'9" x 6'8"	85 sq. ft	Yes

1 Floor 1 - Living Room



Max Dimensions: 12'9" x 9'5"
Calculated Area: 120 sq. ft
Included: Yes

Heated: Yes
Finished: Yes
Enclosed: Yes
Contiguous: Yes
Permitted: Yes
Wet space: No
Addition: No
Conversion: No

2 Floor 1 - Bath



Max Dimensions: 7'1" x 5'6"
Calculated Area: 39 sq. ft
Included: Yes

Heated: Yes
Finished: Yes
Enclosed: Yes
Contiguous: Yes
Permitted: Yes
Wet space: Yes
Addition: No
Conversion: No

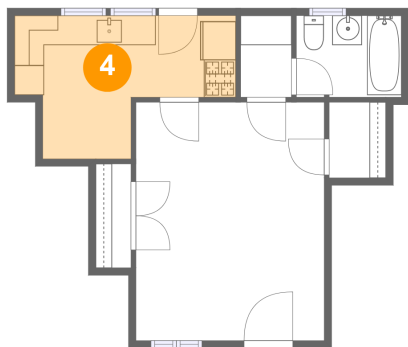
3 Floor 1 - Hall



Max Dimensions: 3'5" x 5'6"
Calculated Area: 19 sq. ft
Included: Yes

Heated: Yes
Finished: Yes
Enclosed: Yes
Contiguous: Yes
Permitted: Yes
Wet space: No
Addition: No
Conversion: No

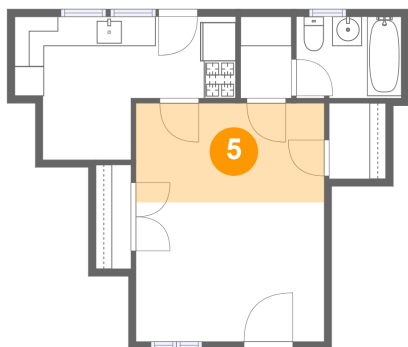
4 Floor 1 - Kitchen



Max Dimensions: 14'11" x 9'8"
Calculated Area: 107 sq. ft
Included: Yes

Heated: Yes
Finished: Yes
Enclosed: Yes
Contiguous: Yes
Permitted: Yes
Wet space: No
Addition: No
Conversion: No

5 Floor 1 - Dining Area



Max Dimensions: 12'9" x 6'8"
Calculated Area: 85 sq. ft
Included: Yes

Heated: Yes
Finished: Yes
Enclosed: Yes
Contiguous: Yes
Permitted: Yes
Wet space: No
Addition: No
Conversion: No