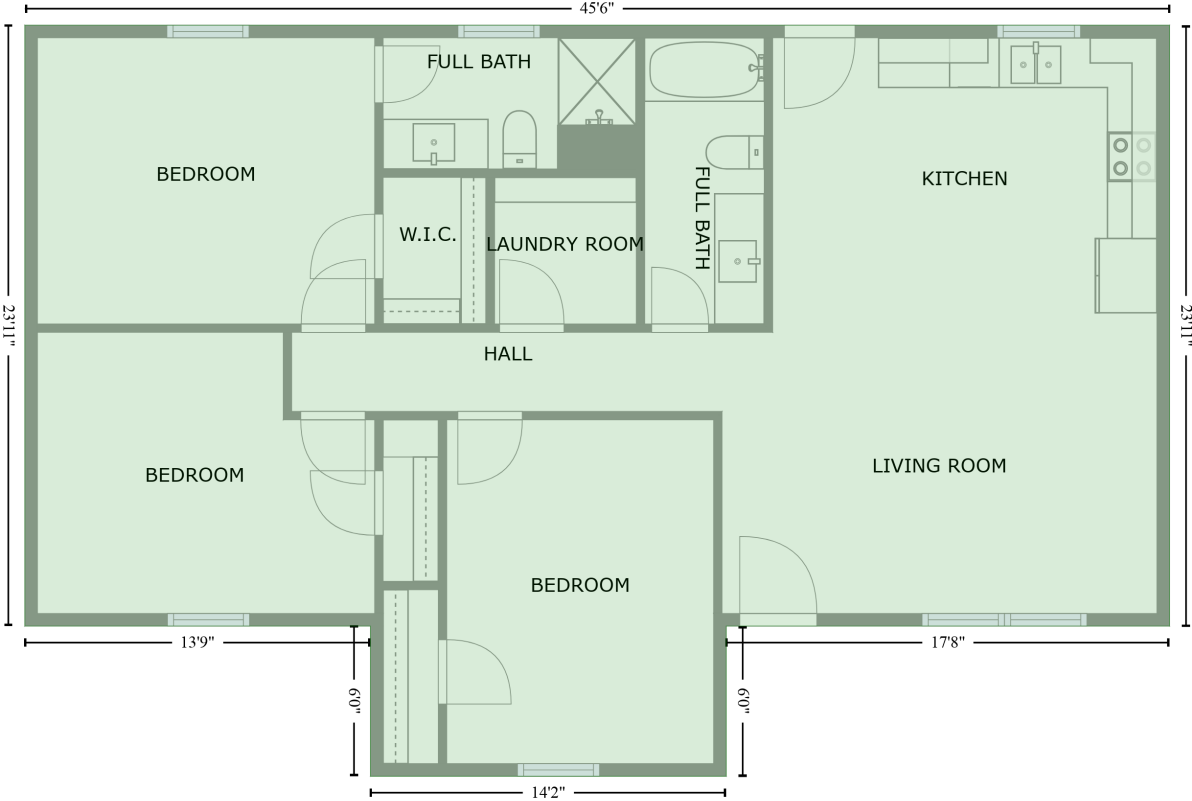


1952 Noles Circle, Lincolnton, Lincoln County, North Carolina, United States, 28092

Gross Living Area: 1173 sq. ft

FLOOR 1
[AREA: 1173]



Space	Area (sq. ft)	Calculation <small>Coordinate Polygon Area Algorithm using inches</small>
FLOOR 1 (Living area)	1173	$ \begin{aligned} & -((560.7 + 560.7) * (159.3 - 446.1) + (560.7 + 349.1) * (446.1 - 446.1) + (349.1 + 349.1) * (446.1 - \\ & 517.7) + (349.1 + 179.4) * (517.7 - 517.7) + (179.4 + 179.4) * (517.7 - 446.1) + (179.4 + 14.4) * \\ & (446.1 - 446.1) + (14.4 + 14.4) * (446.1 - 159.3) + (14.4 + 560.7) * (159.3 - 159.3)) * 0.5 * \\ & 0.00694 \end{aligned} $