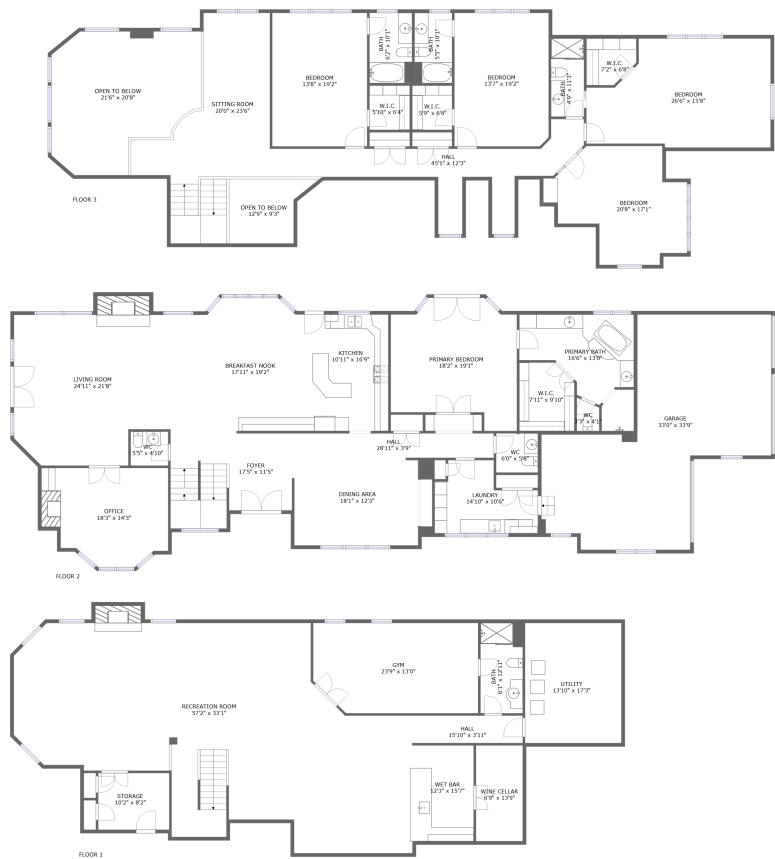


Home report

1088 Dunstan Road, Geneva, Kane County, Illinois, United States, 60134



Total Area: 7019 sq. ft

Below Ground: 2211 sq. ft, Floor 2: 2653 sq. ft, Floor 3: 2155 sq. ft

Excluded: Basement Wine 92 sq. ft, Storage 83 sq. ft, Fireplace 43 sq. ft, Garage 708 sq. ft, Opentobelow 454 sq. ft, Walls: 453 sq. ft

Property summary

 **3** Floors

 **5** Bedrooms

 **5** Bathrooms

Home report

1088 Dunstan Road, Geneva, Kane County, Illinois, United States, 60134



2
Half baths



1
Garages

Home report

1088 Dunstan Road, Geneva, Kane County, Illinois, United States, 60134



Room dimensions

Floor 1 Below ground Total:2211sqft Excluded: 194sqft

#		Max Dimensions	sqft	Included
1	Hall	15'10" x 3'11"	63 sq. ft	Yes
2	Recreation Room	57'2" x 33'1"	1312 sq. ft	Yes
3	Bath	6'1" x 12'11"	79 sq. ft	Yes
4	Utility	13'10" x 17'3"	239 sq. ft	Yes
5	Wet Bar	12'3" x 15'7"	174 sq. ft	Yes
6	Gym	23'9" x 13'0"	297 sq. ft	Yes
7	Storage	10'2" x 8'2"	83 sq. ft	No
8	Wine Cellar	6'9" x 13'9"	92 sq. ft	No

Home report

1088 Dunstan Road, Geneva, Kane County, Illinois, United States, 60134



Room dimensions

Floor 2 Total:2653sqft Excluded: 732sqft

#		Max Dimensions	sqft	Included
9	Living Room	24'11" x 21'8"	511 sq. ft	Yes
10	Hall	28'11" x 3'9"	107 sq. ft	Yes
11	WC	6'0" x 5'8"	34 sq. ft	Yes
12	Kitchen	10'11" x 16'9"	182 sq. ft	Yes
13	Primary Bath	16'6" x 13'0"	154 sq. ft	Yes
14	WC	3'3" x 4'1"	13 sq. ft	Yes
15	Office	18'3" x 14'3"	226 sq. ft	Yes
16	WC	5'5" x 4'10"	26 sq. ft	Yes
17	Garage	33'0" x 33'9"	708 sq. ft	No
18	Dining Area	18'1" x 12'3"	219 sq. ft	Yes
19	W.I.C.	7'11" x 9'10"	74 sq. ft	Yes

Home report

1088 Dunstan Road, Geneva, Kane County, Illinois, United States, 60134

#		Max Dimensions	sqft	Included
20	Breakfast Nook	17'11" x 19'2"	325 sq. ft	Yes
21	Laundry	14'10" x 10'6"	123 sq. ft	Yes
22	Primary Bedroom	18'2" x 19'1"	292 sq. ft	Yes
23	Foyer	17'5" x 11'5"	217 sq. ft	Yes

1088 Dunstan Road, Geneva, Kane County, Illinois, United States, 60134



Total:2155sqft Excluded: 454sqft

Scan captured on Tue, 10 Jun 2025 18:33:07 GMT

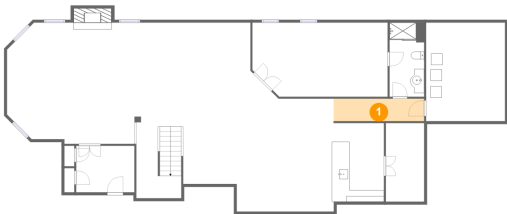
Home report

1088 Dunstan Road, Geneva, Kane County, Illinois, United States, 60134

#		Max Dimensions	sqft	Included
35	Bath	4'9" x 11'3"	53 sq. ft	Yes
36	W.I.C.	5'9" x 6'4"	37 sq. ft	Yes
37	W.I.C.	7'2" x 6'8"	43 sq. ft	Yes

1088 Dunstan Road, Geneva, Kane County, Illinois, United States, 60134

1 Floor 1 - Hall



Max Dimensions: 15'10" x 3'11"
Calculated Area: 63 sq. ft
Included: Yes

Heated: Yes
Finished: Yes
Enclosed: Yes
Contiguous: Yes
Permitted: Yes
Wet space: No
Addition: No
Conversion: No

2 Floor 1 - Recreation Room



Max Dimensions: 57'2" x 33'1"
Calculated Area: 1312 sq. ft
Included: Yes

Heated: Yes
Finished: Yes
Enclosed: Yes
Contiguous: Yes
Permitted: Yes
Wet space: No
Addition: No
Conversion: No

1088 Dunstan Road, Geneva, Kane County, Illinois, United States, 60134

3 Floor 1 - Bath



Max Dimensions: 6'1" x 12'11"
Calculated Area: 79 sq. ft
Included: Yes

Heated: Yes
Finished: Yes
Enclosed: Yes
Contiguous: Yes
Permitted: Yes
Wet space: Yes
Addition: No
Conversion: No

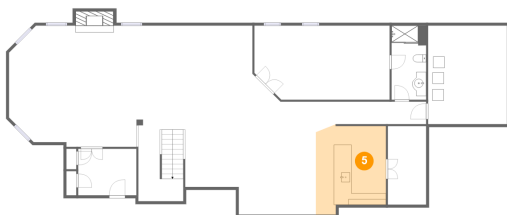
4 Floor 1 - Utility



Max Dimensions: 13'10" x 17'3"
Calculated Area: 239 sq. ft
Included: Yes

Heated: Yes
Finished: Yes
Enclosed: Yes
Contiguous: Yes
Permitted: Yes
Wet space: No
Addition: No
Conversion: No

5 Floor 1 - Wet Bar

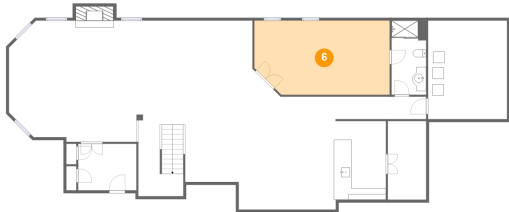


Max Dimensions: 12'3" x 15'7"
Calculated Area: 174 sq. ft
Included: Yes

Heated: Yes
Finished: Yes
Enclosed: Yes
Contiguous: Yes
Permitted: Yes
Wet space: No
Addition: No
Conversion: No

1088 Dunstan Road, Geneva, Kane County, Illinois, United States, 60134

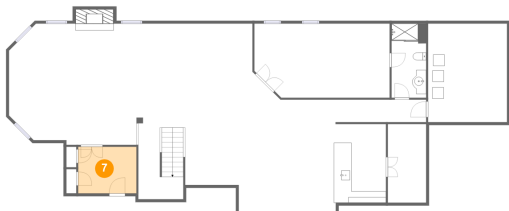
6 Floor 1 - Gym



Max Dimensions: 23'9" x 13'0"
Calculated Area: 297 sq. ft
Included: Yes

Heated: Yes
Finished: Yes
Enclosed: Yes
Contiguous: Yes
Permitted: Yes
Wet space: No
Addition: No
Conversion: No

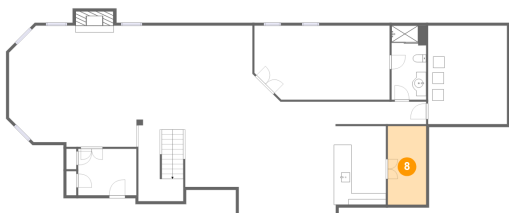
7 Floor 1 - Storage



Max Dimensions: 10'2" x 8'2"
Calculated Area: 83 sq. ft
Included: No

Heated: No
Finished: No
Enclosed: No
Contiguous: Yes
Permitted: Yes
Wet space: No
Addition: No
Conversion: No

8 Floor 1 - Wine Cellar



Max Dimensions: 6'9" x 13'9"
Calculated Area: 92 sq. ft
Included: No

Heated: No
Finished: No
Enclosed: Yes
Contiguous: Yes
Permitted: Yes
Wet space: No
Addition: No
Conversion: No

1088 Dunstan Road, Geneva, Kane County, Illinois, United States, 60134

9 Floor 2 - Living Room



Max Dimensions: 24'11" x 21'8"
Calculated Area: 511 sq. ft
Included: Yes

Heated: Yes
Finished: Yes
Enclosed: Yes
Contiguous: Yes
Permitted: Yes
Wet space: No
Addition: No
Conversion: No

10 Floor 2 - Hall



Max Dimensions: 28'11" x 3'9"
Calculated Area: 107 sq. ft
Included: Yes

Heated: Yes
Finished: Yes
Enclosed: Yes
Contiguous: Yes
Permitted: Yes
Wet space: No
Addition: No
Conversion: No

11 Floor 2 - WC



Max Dimensions: 6'0" x 5'8"
Calculated Area: 34 sq. ft
Included: Yes

Heated: Yes
Finished: Yes
Enclosed: Yes
Contiguous: Yes
Permitted: Yes
Wet space: Yes
Addition: No
Conversion: No

1088 Dunstan Road, Geneva, Kane County, Illinois, United States, 60134

12 Floor 2 - Kitchen



Max Dimensions: 10'11" x 16'9"
Calculated Area: 182 sq. ft
Included: Yes

Heated: Yes
Finished: Yes
Enclosed: Yes
Contiguous: Yes
Permitted: Yes
Wet space: No
Addition: No
Conversion: No

13 Floor 2 - Primary Bath



Max Dimensions: 16'6" x 13'0"
Calculated Area: 154 sq. ft
Included: Yes

Heated: Yes
Finished: Yes
Enclosed: Yes
Contiguous: Yes
Permitted: Yes
Wet space: Yes
Addition: No
Conversion: No

14 Floor 2 - WC



Max Dimensions: 3'3" x 4'1"
Calculated Area: 13 sq. ft
Included: Yes

Heated: Yes
Finished: Yes
Enclosed: Yes
Contiguous: Yes
Permitted: Yes
Wet space: No
Addition: No
Conversion: No

1088 Dunstan Road, Geneva, Kane County, Illinois, United States, 60134

15 Floor 2 - Office



Max Dimensions: 18'3" x 14'3"
Calculated Area: 226 sq. ft
Included: Yes

Heated: Yes
Finished: Yes
Enclosed: Yes
Contiguous: Yes
Permitted: Yes
Wet space: No
Addition: No
Conversion: No

16 Floor 2 - WC



Max Dimensions: 5'5" x 4'10"
Calculated Area: 26 sq. ft
Included: Yes

Heated: Yes
Finished: Yes
Enclosed: Yes
Contiguous: Yes
Permitted: Yes
Wet space: Yes
Addition: No
Conversion: No

17 Floor 2 - Garage



Max Dimensions: 33'0" x 33'9"
Calculated Area: 708 sq. ft
Included: No

Heated: No
Finished: No
Enclosed: Yes
Contiguous: Yes
Permitted: Yes
Wet space: No
Addition: No
Conversion: No

1088 Dunstan Road, Geneva, Kane County, Illinois, United States, 60134

18 Floor 2 - Dining Area



Max Dimensions: 18'1" x 12'3"
Calculated Area: 219 sq. ft
Included: Yes

Heated: Yes
Finished: Yes
Enclosed: Yes
Contiguous: Yes
Permitted: Yes
Wet space: No
Addition: No
Conversion: No

19 Floor 2 - W.I.C.



Max Dimensions: 7'11" x 9'10"
Calculated Area: 74 sq. ft
Included: Yes

Heated: Yes
Finished: Yes
Enclosed: Yes
Contiguous: Yes
Permitted: Yes
Wet space: No
Addition: No
Conversion: No

20 Floor 2 - Breakfast Nook



Max Dimensions: 17'11" x 19'2"
Calculated Area: 325 sq. ft
Included: Yes

Heated: Yes
Finished: Yes
Enclosed: Yes
Contiguous: Yes
Permitted: Yes
Wet space: No
Addition: No
Conversion: No

Home report

1088 Dunstan Road, Geneva, Kane County, Illinois, United States, 60134

21 Floor 2 - Laundry



Max Dimensions: 14'10" x 10'6"
Calculated Area: 123 sq. ft
Included: Yes

Heated: Yes
Finished: Yes
Enclosed: Yes
Contiguous: Yes
Permitted: Yes
Wet space: No
Addition: No
Conversion: No

22 Floor 2 - Primary Bedroom



Max Dimensions: 18'2" x 19'1"
Calculated Area: 292 sq. ft
Included: Yes

Heated: Yes
Finished: Yes
Enclosed: Yes
Contiguous: Yes
Permitted: Yes
Wet space: No
Addition: No
Conversion: No

23 Floor 2 - Foyer

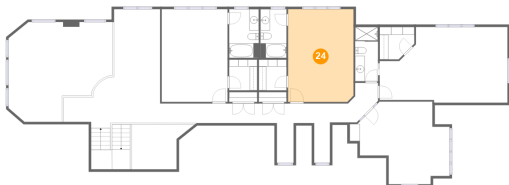


Max Dimensions: 17'5" x 11'5"
Calculated Area: 217 sq. ft
Included: Yes

Heated: Yes
Finished: Yes
Enclosed: Yes
Contiguous: Yes
Permitted: Yes
Wet space: No
Addition: No
Conversion: No

1088 Dunstan Road, Geneva, Kane County, Illinois, United States, 60134

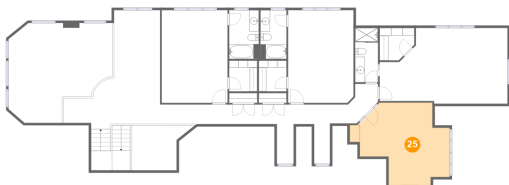
24 Floor 3 - Bedroom



Max Dimensions: 13'7" x 19'2"
Calculated Area: 259 sq. ft
Included: Yes

Heated: Yes
Finished: Yes
Enclosed: Yes
Contiguous: Yes
Permitted: Yes
Wet space: No
Addition: No
Conversion: No

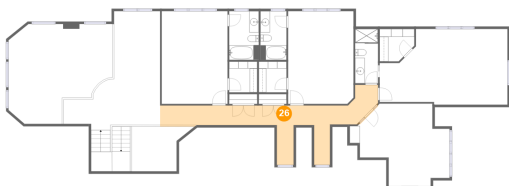
25 Floor 3 - Bedroom



Max Dimensions: 20'8" x 17'1"
Calculated Area: 255 sq. ft
Included: Yes

Heated: Yes
Finished: Yes
Enclosed: Yes
Contiguous: Yes
Permitted: Yes
Wet space: No
Addition: No
Conversion: No

26 Floor 3 - Hall

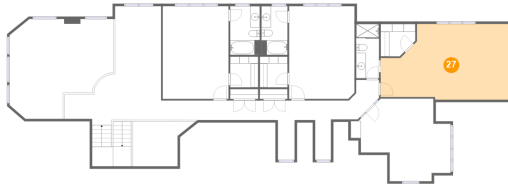


Max Dimensions: 45'1" x 12'3"
Calculated Area: 254 sq. ft
Included: Yes

Heated: Yes
Finished: Yes
Enclosed: Yes
Contiguous: Yes
Permitted: Yes
Wet space: No
Addition: No
Conversion: No

1088 Dunstan Road, Geneva, Kane County, Illinois, United States, 60134

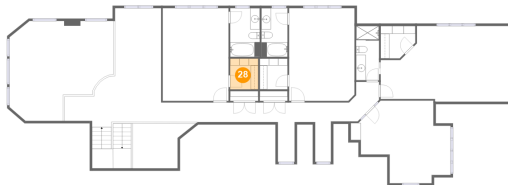
27 Floor 3 - Bedroom



Max Dimensions: 26'6" x 15'8"
Calculated Area: 362 sq. ft
Included: Yes

Heated: Yes
Finished: Yes
Enclosed: Yes
Contiguous: Yes
Permitted: Yes
Wet space: No
Addition: No
Conversion: No

28 Floor 3 - W.I.C.



Max Dimensions: 5'10" x 6'4"
Calculated Area: 37 sq. ft
Included: Yes

Heated: Yes
Finished: Yes
Enclosed: Yes
Contiguous: Yes
Permitted: Yes
Wet space: No
Addition: No
Conversion: No

29 Floor 3 - Bath

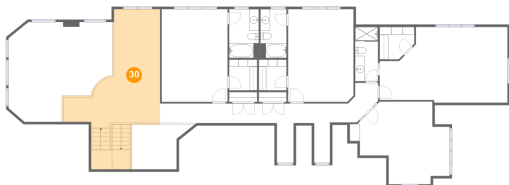


Max Dimensions: 6'2" x 10'1"
Calculated Area: 62 sq. ft
Included: Yes

Heated: Yes
Finished: Yes
Enclosed: Yes
Contiguous: Yes
Permitted: Yes
Wet space: Yes
Addition: No
Conversion: No

1088 Dunstan Road, Geneva, Kane County, Illinois, United States, 60134

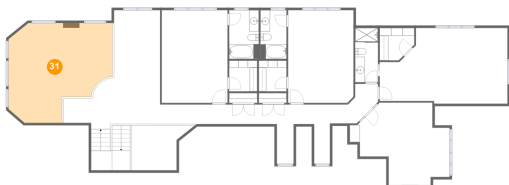
30 Floor 3 - Sitting Room



Max Dimensions: 20'0" x 23'6"
Calculated Area: 386 sq. ft
Included: Yes

Heated: Yes
Finished: Yes
Enclosed: Yes
Contiguous: Yes
Permitted: Yes
Wet space: No
Addition: No
Conversion: No

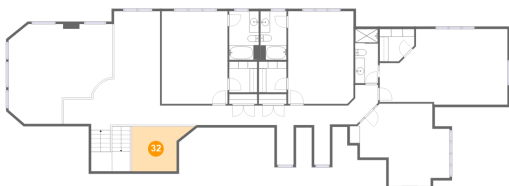
31 Floor 3 - Open To Below



Max Dimensions: 21'6" x 20'8"
Calculated Area: 363 sq. ft
Included: No

Heated: No
Finished: No
Enclosed: No
Contiguous: Yes
Permitted: No
Wet space: No
Addition: No
Conversion: No

32 Floor 3 - Open To Below

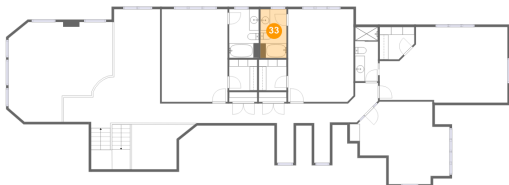


Max Dimensions: 12'9" x 9'3"
Calculated Area: 91 sq. ft
Included: No

Heated: No
Finished: No
Enclosed: No
Contiguous: Yes
Permitted: No
Wet space: No
Addition: No
Conversion: No

1088 Dunstan Road, Geneva, Kane County, Illinois, United States, 60134

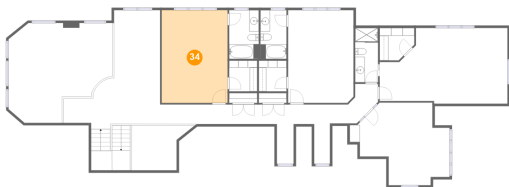
33 Floor 3 - Bath



Max Dimensions: 5'5" x 10'1"
Calculated Area: 55 sq. ft
Included: Yes

Heated: Yes
Finished: Yes
Enclosed: Yes
Contiguous: Yes
Permitted: Yes
Wet space: Yes
Addition: No
Conversion: No

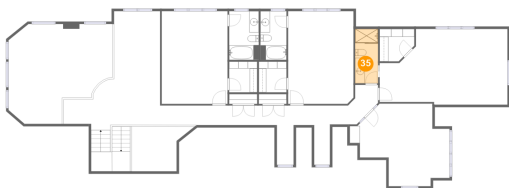
34 Floor 3 - Bedroom



Max Dimensions: 13'8" x 19'2"
Calculated Area: 262 sq. ft
Included: Yes

Heated: Yes
Finished: Yes
Enclosed: Yes
Contiguous: Yes
Permitted: Yes
Wet space: No
Addition: No
Conversion: No

35 Floor 3 - Bath

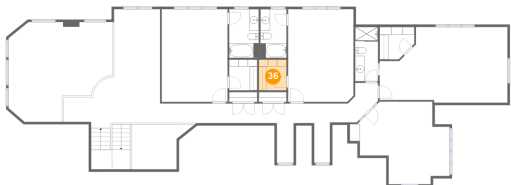


Max Dimensions: 4'9" x 11'3"
Calculated Area: 53 sq. ft
Included: Yes

Heated: Yes
Finished: Yes
Enclosed: Yes
Contiguous: Yes
Permitted: Yes
Wet space: Yes
Addition: No
Conversion: No

1088 Dunstan Road, Geneva, Kane County, Illinois, United States, 60134

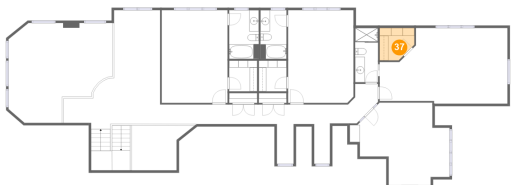
36 Floor 3 - W.I.C.



Max Dimensions: 5'9" x 6'4"
Calculated Area: 37 sq. ft
Included: Yes

Heated: Yes
Finished: Yes
Enclosed: Yes
Contiguous: Yes
Permitted: Yes
Wet space: No
Addition: No
Conversion: No

37 Floor 3 - W.I.C.



Max Dimensions: 7'2" x 6'8"
Calculated Area: 43 sq. ft
Included: Yes

Heated: Yes
Finished: Yes
Enclosed: Yes
Contiguous: Yes
Permitted: Yes
Wet space: No
Addition: No
Conversion: No