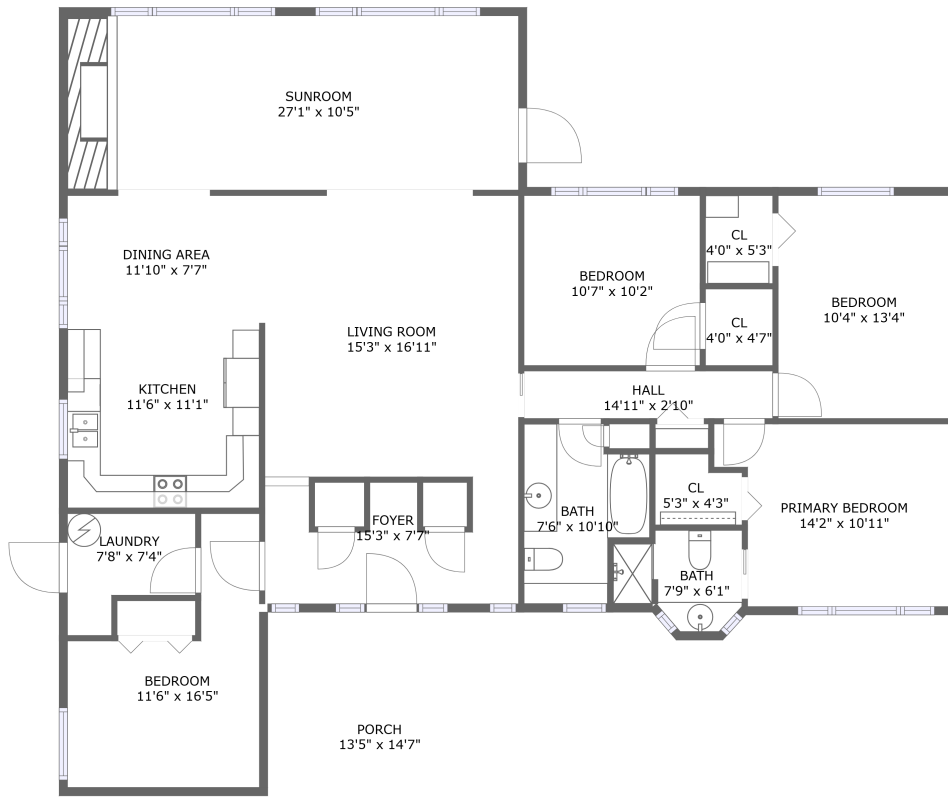


1163 60th Avenue South, Greater Pinellas Point, St. Petersburg, Pinellas County, Florida, United



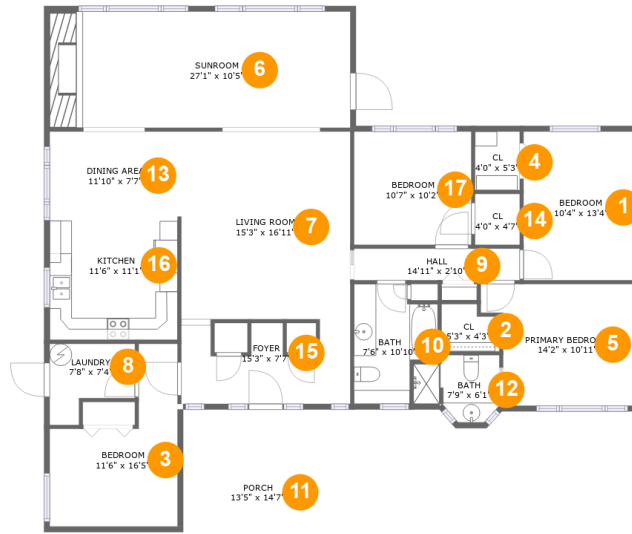
FLOOR 1

Property Summary

0 garages **4** bedrooms **2** bathrooms **0** half baths

1 floors **1,826** Gross Living Area sqft **2,022** total sqft

1163 60th Avenue South, Greater Pinellas Point, St. Petersburg, Pinellas County, Florida, United



Room Dimensions

Floor 1

Total sqft: 2022

Living area: 1826

#	Room name	Dimensions	Area (sqft)	Counted as Living Area
1	Bedroom	10'4" x 13'4"	138 sq. ft	Yes
2	Cl	5'3" x 4'3"	20 sq. ft	Yes
3	Bedroom	11'6" x 16'5"	128 sq. ft	Yes
4	Cl	4'0" x 5'3"	21 sq. ft	Yes
5	Primary Bedroom	14'2" x 10'11"	138 sq. ft	Yes
6	Sunroom	27'1" x 10'5"	283 sq. ft	Yes
7	Living Room	15'3" x 16'11"	257 sq. ft	Yes
8	Laundry	7'8" x 7'4"	44 sq. ft	Yes
9	Hall	14'11" x 2'10"	43 sq. ft	Yes
10	Bath	7'6" x 10'10"	66 sq. ft	Yes
11	Porch	13'5" x 14'7"	196 sq. ft	No

**1163 60th Avenue South, Greater Pinellas Point,
St. Petersburg, Pinellas County, Florida, United**

#	Room name	Dimensions	Area (sqft)	Counted as Living Area
12	Bath	7'9" x 6'1"	38 sq. ft	Yes
13	Dining Area	11'10" x 7'7"	91 sq. ft	Yes
14	Cl	4'0" x 4'7"	18 sq. ft	Yes
15	Foyer	15'3" x 7'7"	116 sq. ft	Yes
16	Kitchen	11'6" x 11'1"	128 sq. ft	Yes
17	Bedroom	10'7" x 10'2"	108 sq. ft	Yes

1163 60th Avenue South, Greater Pinellas Point, St. Petersburg, Pinellas County, Florida, United

1 Floor 1 - Bedroom



Dimensions: 10'4" x 13'4"
Area: 138 sq. ft
Counted as Living Area:
Yes

Heated: Yes
Finished: Yes
Enclosed: Yes
Contiguous:
Yes
Permitted: Yes
Wet Space: No
Addition: No
Conversion: No

2 Floor 1 - Cl



Dimensions: 5'3" x 4'3"
Area: 20 sq. ft
Counted as Living Area:
Yes

Heated: Yes
Finished: Yes
Enclosed: Yes
Contiguous:
Yes
Permitted: Yes
Wet Space: No
Addition: No
Conversion: No

1163 60th Avenue South, Greater Pinellas Point, St. Petersburg, Pinellas County, Florida, United

3 Floor 1 - Bedroom



Dimensions: 11'6" x 16'5"
Area: 128 sq. ft
Counted as Living Area:
Yes

Heated: Yes
Finished: Yes
Enclosed: Yes
Contiguous:
Yes
Permitted: Yes
Wet Space: No
Addition: No
Conversion: No

4 Floor 1 - Cl



Dimensions: 4'0" x 5'3"
Area: 21 sq. ft
Counted as Living Area:
Yes

Heated: Yes
Finished: Yes
Enclosed: Yes
Contiguous:
Yes
Permitted: Yes
Wet Space: No
Addition: No
Conversion: No

5 Floor 1 - Primary Bedroom

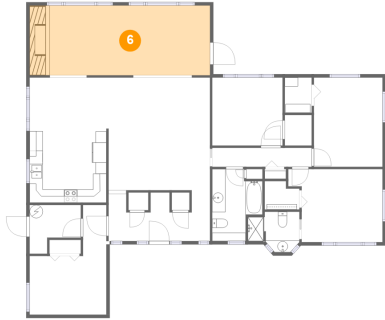


Dimensions: 14'2" x 10'11"
Area: 138 sq. ft
Counted as Living Area:
Yes

Heated: Yes
Finished: Yes
Enclosed: Yes
Contiguous:
Yes
Permitted: Yes
Wet Space: No
Addition: No
Conversion: No

1163 60th Avenue South, Greater Pinellas Point, St. Petersburg, Pinellas County, Florida, United

6 Floor 1 - Sunroom



Dimensions: 27'1" x 10'5"
Area: 283 sq. ft
Counted as Living Area:
Yes

Heated: Yes
Finished: Yes
Enclosed: Yes
Contiguous:
Yes
Permitted: Yes
Wet Space: No
Addition: No
Conversion: No

7 Floor 1 - Living Room



Dimensions: 15'3" x 16'11"
Area: 257 sq. ft
Counted as Living Area:
Yes

Heated: Yes
Finished: Yes
Enclosed: Yes
Contiguous:
Yes
Permitted: Yes
Wet Space: No
Addition: No
Conversion: No

8 Floor 1 - Laundry

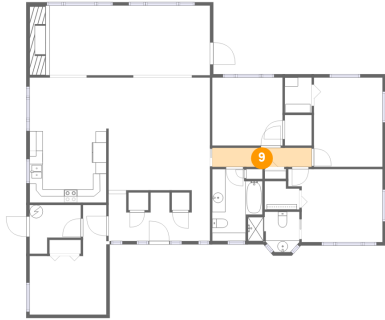


Dimensions: 7'8" x 7'4"
Area: 44 sq. ft
Counted as Living Area:
Yes

Heated: Yes
Finished: Yes
Enclosed: Yes
Contiguous:
Yes
Permitted: Yes
Wet Space: No
Addition: No
Conversion: No

1163 60th Avenue South, Greater Pinellas Point, St. Petersburg, Pinellas County, Florida, United

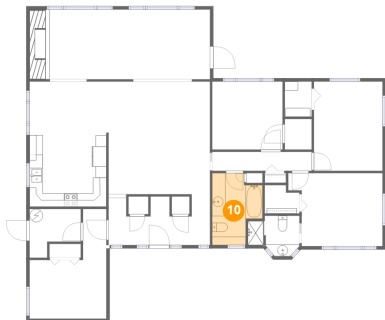
9 Floor 1 - Hall



Dimensions: 14'11" x 2'10"
Area: 43 sq. ft
Counted as Living Area:
Yes

Heated: Yes
Finished: Yes
Enclosed: Yes
Contiguous:
Yes
Permitted: Yes
Wet Space: No
Addition: No
Conversion: No

10 Floor 1 - Bath



Dimensions: 7'6" x 10'10"
Area: 66 sq. ft
Counted as Living Area:
Yes

Heated: Yes
Finished: Yes
Enclosed: Yes
Contiguous:
Yes
Permitted: Yes
Wet Space: Yes
Addition: No
Conversion: No

11 Floor 1 - Porch



Dimensions: 13'5" x 14'7"
Area: 196 sq. ft
Counted as Living Area: No

Heated: No
Finished: Yes
Enclosed: No
Contiguous: Yes
Permitted: Yes
Wet Space: No
Addition: No
Conversion: No

1163 60th Avenue South, Greater Pinellas Point, St. Petersburg, Pinellas County, Florida, United

12 Floor 1 - Bath



Dimensions: 7'9" x 6'1"
Area: 38 sq. ft
Counted as Living Area:
Yes

Heated: Yes
Finished: Yes
Enclosed: Yes
Contiguous:
Yes
Permitted: Yes
Wet Space: Yes
Addition: No
Conversion: No

13 Floor 1 - Dining Area



Dimensions: 11'10" x 7'7"
Area: 91 sq. ft
Counted as Living Area:
Yes

Heated: Yes
Finished: Yes
Enclosed: Yes
Contiguous:
Yes
Permitted: Yes
Wet Space: No
Addition: No
Conversion: No

14 Floor 1 - Cl



Dimensions: 4'0" x 4'7"
Area: 18 sq. ft
Counted as Living Area:
Yes

Heated: Yes
Finished: Yes
Enclosed: Yes
Contiguous:
Yes
Permitted: Yes
Wet Space: No
Addition: No
Conversion: No

1163 60th Avenue South, Greater Pinellas Point, St. Petersburg, Pinellas County, Florida, United

15 Floor 1 - Foyer



Dimensions: 15'3" x 7'7"
Area: 116 sq. ft
Counted as Living Area:
Yes

Heated: Yes
Finished: Yes
Enclosed: Yes
Contiguous:
Yes
Permitted: Yes
Wet Space: No
Addition: No
Conversion: No

16 Floor 1 - Kitchen



Dimensions: 11'6" x 11'1"
Area: 128 sq. ft
Counted as Living Area:
Yes

Heated: Yes
Finished: Yes
Enclosed: Yes
Contiguous:
Yes
Permitted: Yes
Wet Space: No
Addition: No
Conversion: No

17 Floor 1 - Bedroom



Dimensions: 10'7" x 10'2"
Area: 108 sq. ft
Counted as Living Area:
Yes

Heated: Yes
Finished: Yes
Enclosed: Yes
Contiguous:
Yes
Permitted: Yes
Wet Space: No
Addition: No
Conversion: No