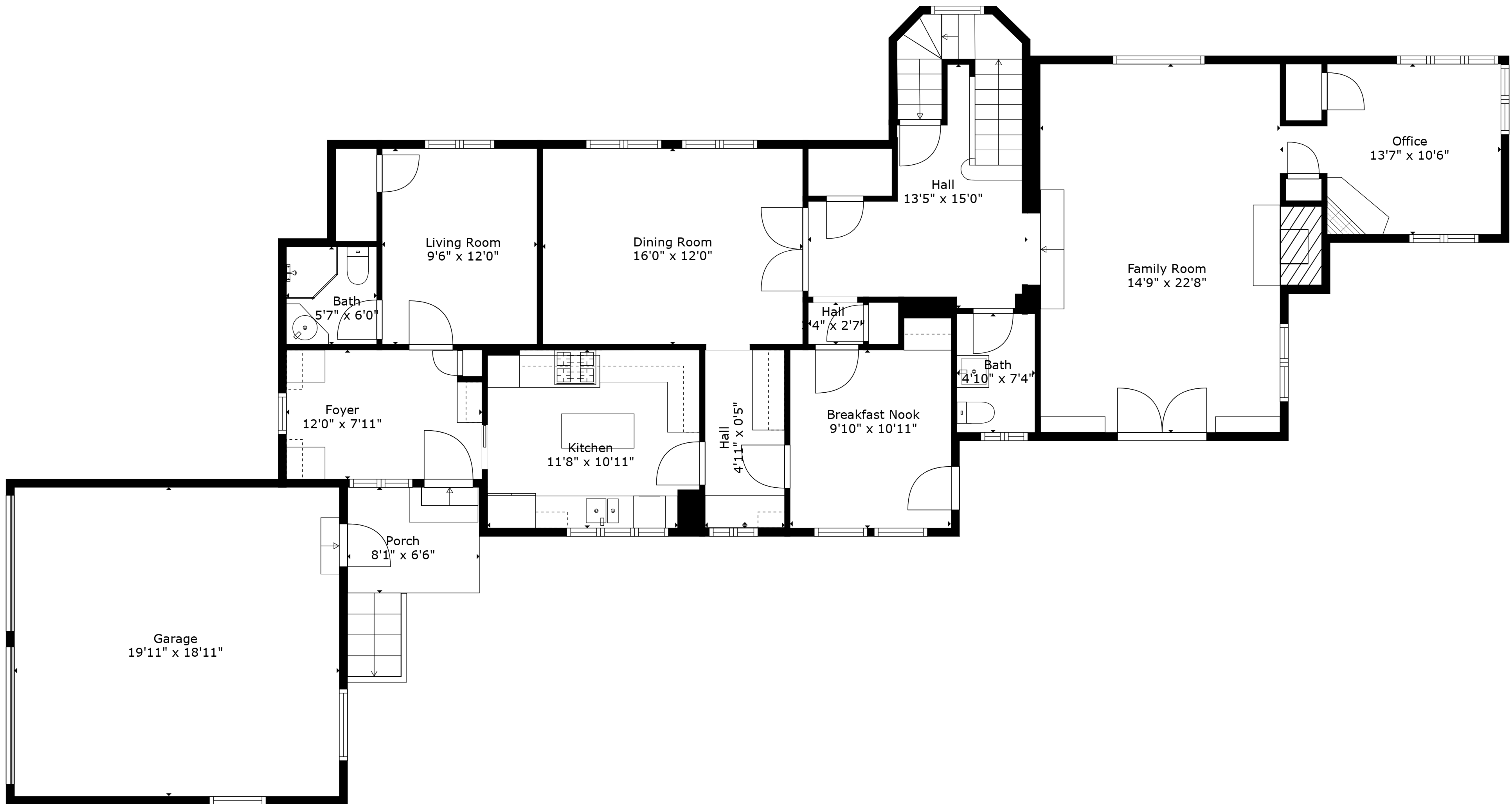


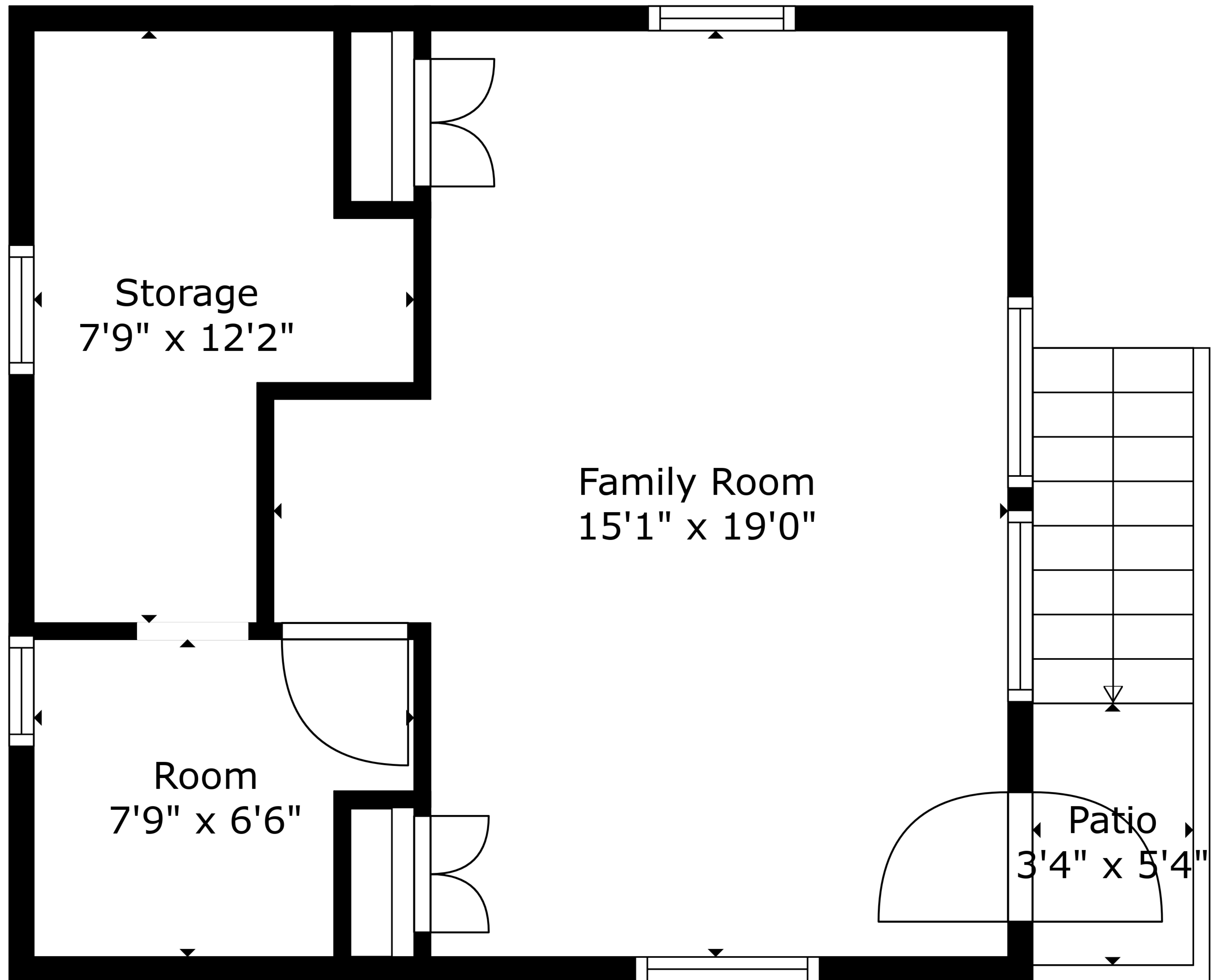
Basement
13'10" x 12'4"

TOTAL: 3204 sq. ft
BELOW GROUND: 159 sq. ft, FLOOR 2: 1541 sq. ft, FLOOR 3: 306 sq. ft, FLOOR 4: 1198 sq. ft
EXCLUDED AREAS: GARAGE: 379 sq. ft, PORCH: 53 sq. ft, STORAGE: 72 sq. ft,
PATIO: 42 sq. ft, BALCONY: 87 sq. ft

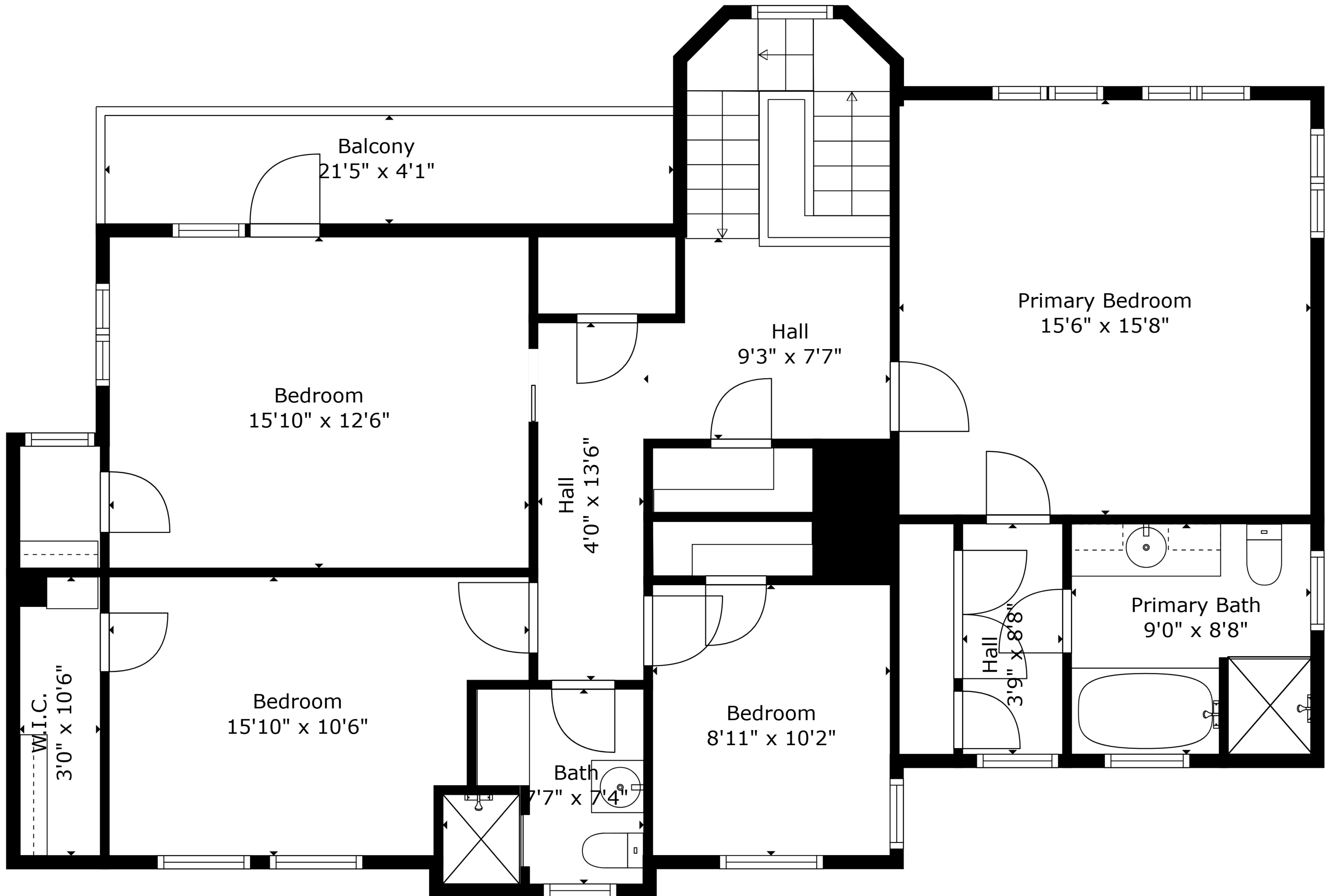


TOTAL: 3204 sq. ft

BELOW GROUND: 159 sq. ft, FLOOR 2: 1541 sq. ft, FLOOR 3: 306 sq. ft, FLOOR 4: 1198 sq. ft
EXCLUDED AREAS: GARAGE: 379 sq. ft, PORCH: 53 sq. ft, STORAGE: 72 sq. ft,
PATIO: 42 sq. ft, BALCONY: 87 sq. ft

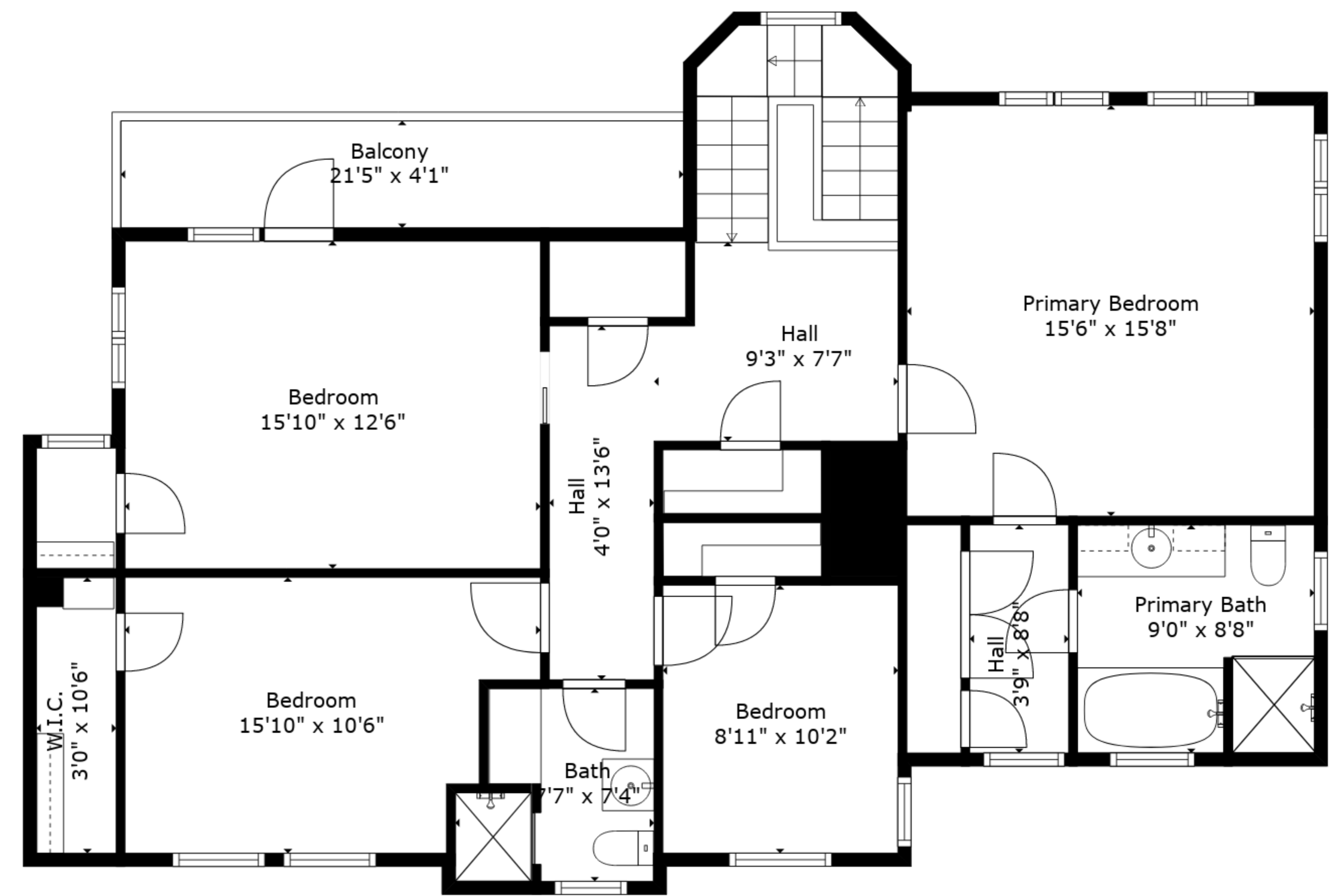
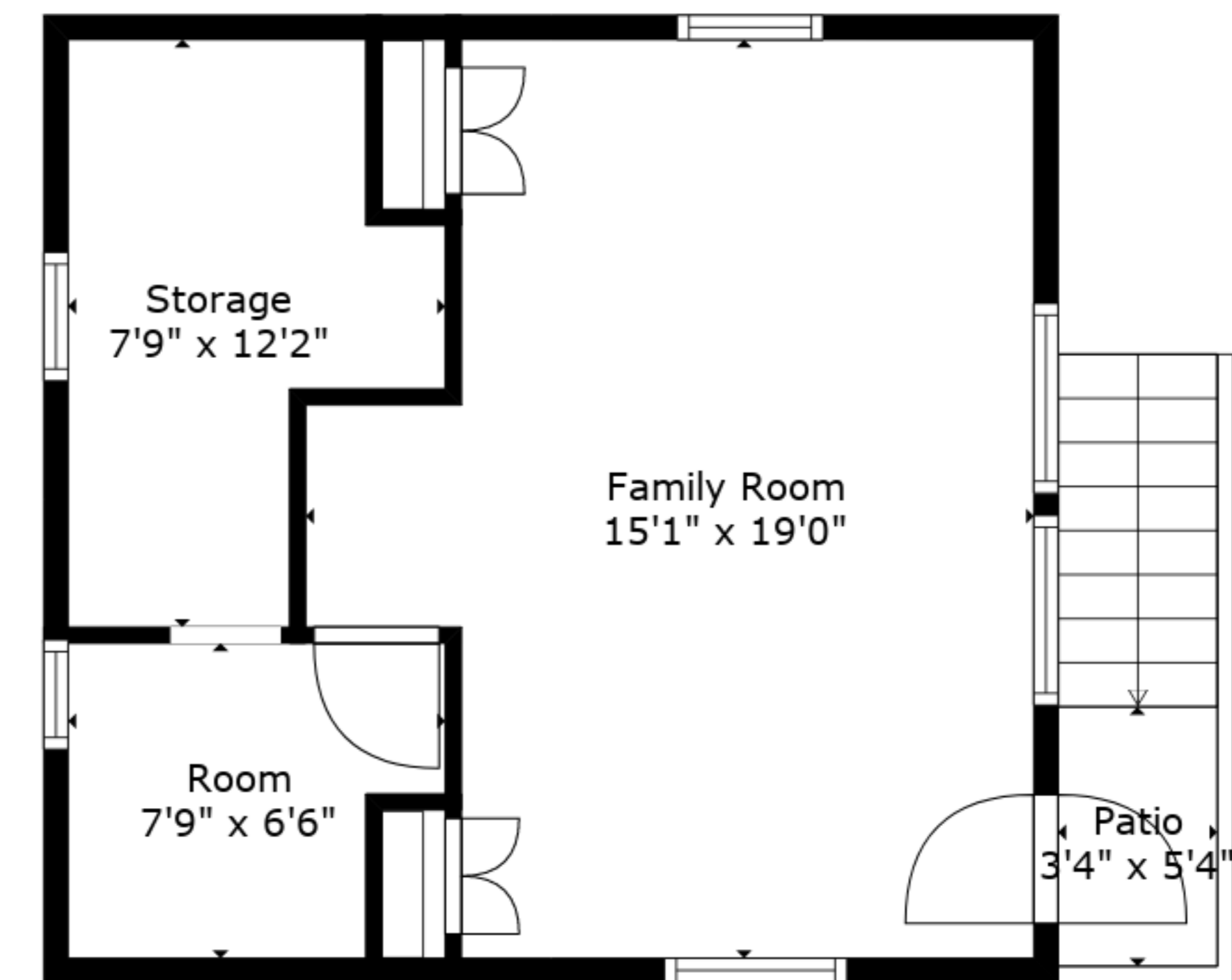
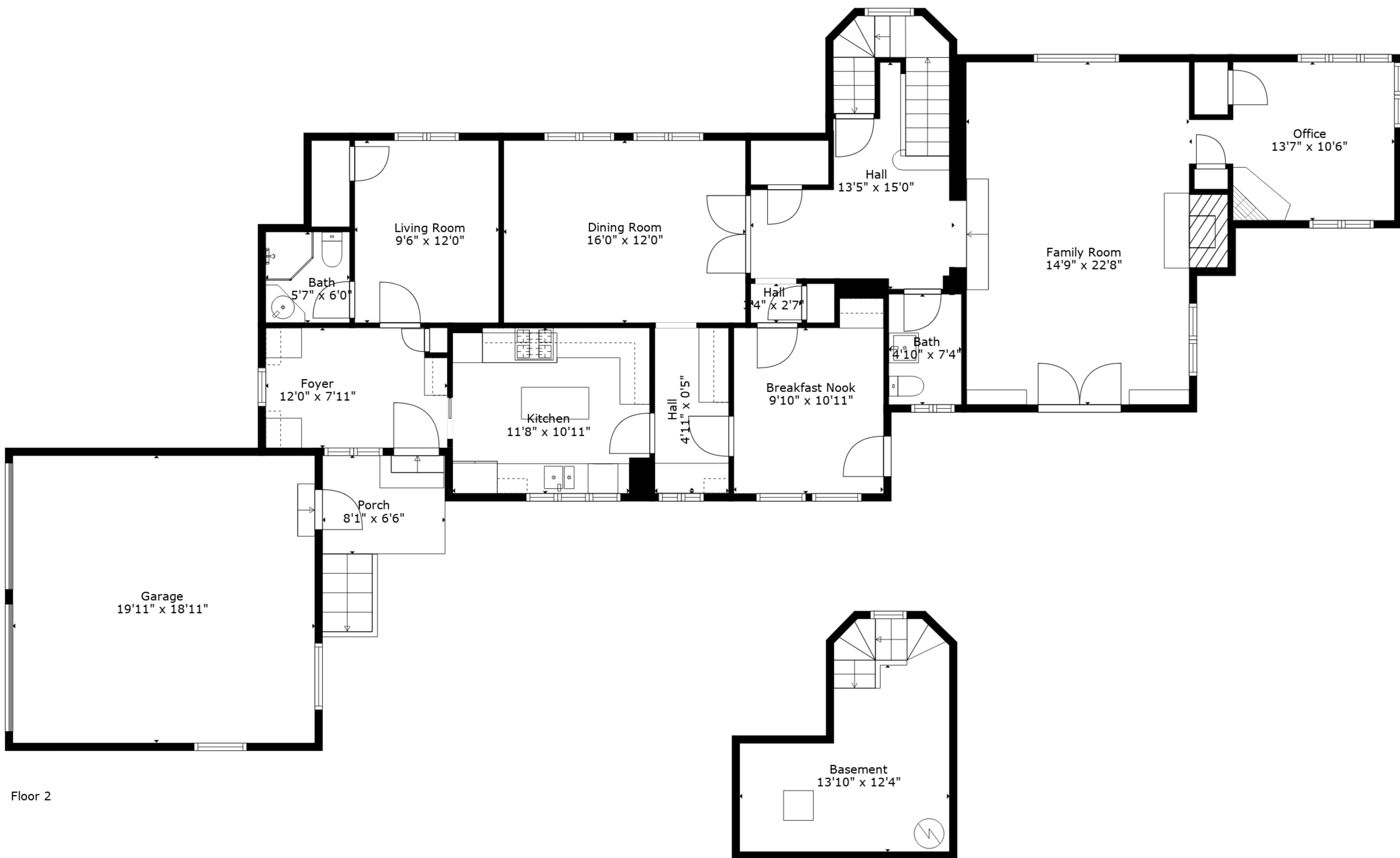


TOTAL: 3204 sq. ft
BELOW GROUND: 159 sq. ft, FLOOR 2: 1541 sq. ft, FLOOR 3: 306 sq. ft, FLOOR 4: 1198 sq. ft
EXCLUDED AREAS: GARAGE: 379 sq. ft, PORCH: 53 sq. ft, STORAGE: 72 sq. ft,
PATIO: 42 sq. ft, BALCONY: 87 sq. ft



TOTAL: 3204 sq. ft

BELOW GROUND: 159 sq. ft, FLOOR 2: 1541 sq. ft, FLOOR 3: 306 sq. ft, FLOOR 4: 1198 sq. ft
EXCLUDED AREAS: GARAGE: 379 sq. ft, PORCH: 53 sq. ft, STORAGE: 72 sq. ft,
PATIO: 42 sq. ft, BALCONY: 87 sq. ft



TOTAL: 3204 sq. ft
 BELOW GROUND: 159 sq. ft, FLOOR 2: 1541 sq. ft, FLOOR 3: 306 sq. ft, FLOOR 4: 1198 sq. ft
 EXCLUDED AREAS: GARAGE: 379 sq. ft, PORCH: 53 sq. ft, STORAGE: 72 sq. ft,
 PATIO: 42 sq. ft, BALCONY: 87 sq. ft