

210 October Drive, Butler, Pennsylvania 16002, United States



Property Summary

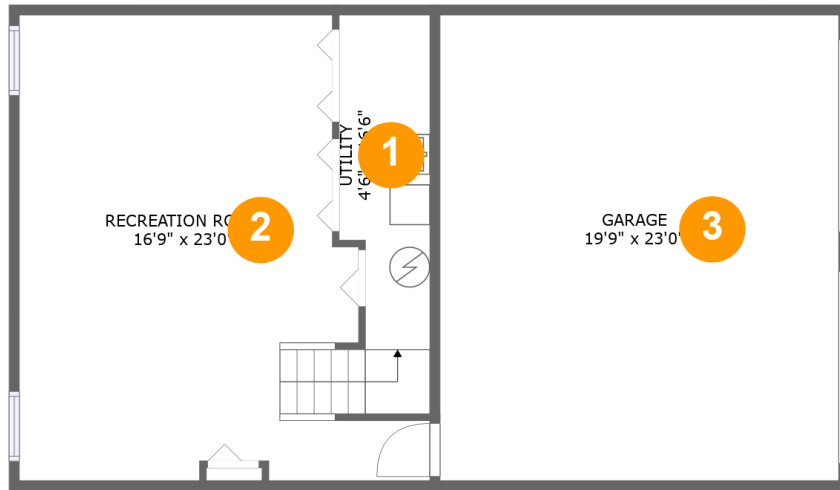
 **1** garages  **3** bedrooms  **2** bathrooms  **0** half baths

 **3** floors

 **2,268** Gross Living Area sqft

 **3,594** total sqft

210 October Drive, Butler, Pennsylvania 16002, United States

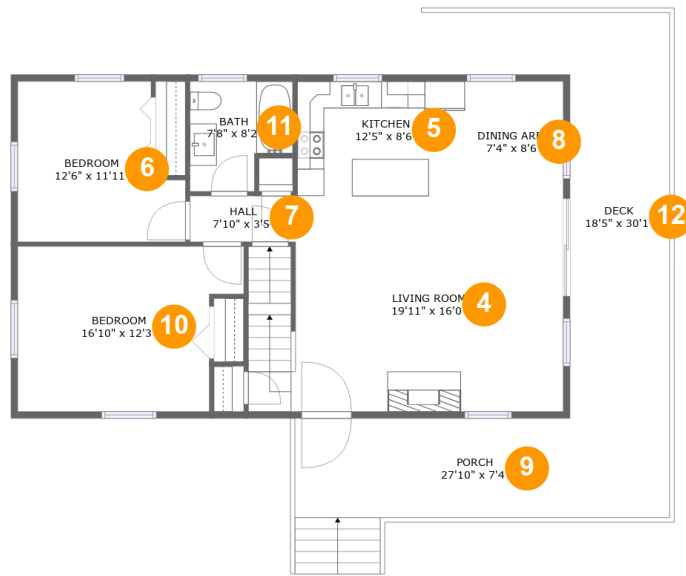


Room Dimensions

Floor 1**Total sqft: 996****Living area: 511**

#	Room name	Dimensions	Area (sqft)	Counted as Living Area
1	Utility	4'6" x 16'6"	67 sq. ft	Yes
2	Recreation Room	16'9" x 23'0"	389 sq. ft	Yes
3	Garage	19'9" x 23'0"	453 sq. ft	No

210 October Drive, Butler, Pennsylvania 16002, United States



Room Dimensions

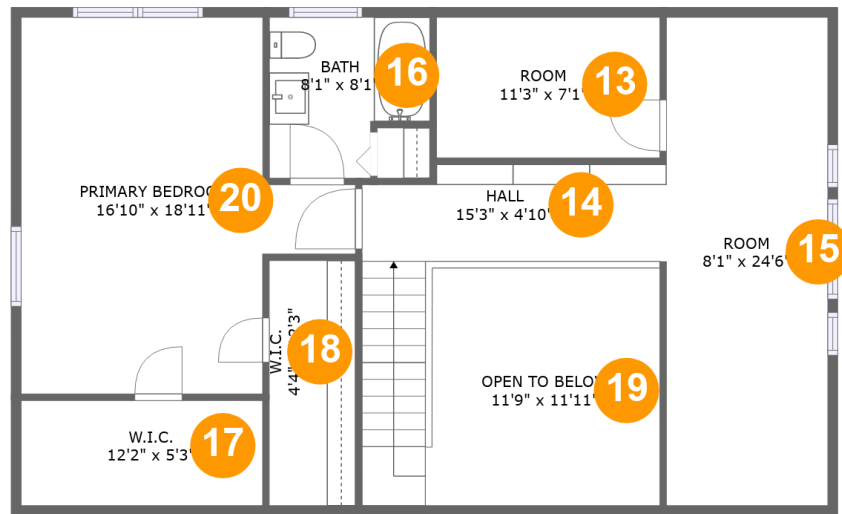
Floor 2

Total sqft: 1538

Living area: 1059

#	Room name	Dimensions	Area (sqft)	Counted as Living Area
4	Living Room	19'11" x 16'0"	359 sq. ft	Yes
5	Kitchen	12'5" x 8'6"	106 sq. ft	Yes
6	Bedroom	12'6" x 11'11"	130 sq. ft	Yes
7	Hall	7'10" x 3'5"	27 sq. ft	Yes
8	Dining Area	7'4" x 8'6"	62 sq. ft	Yes
9	Porch	27'10" x 7'4"	205 sq. ft	No
10	Bedroom	16'10" x 12'3"	184 sq. ft	Yes
11	Bath	7'8" x 8'2"	54 sq. ft	Yes
12	Deck	18'5" x 30'1"	274 sq. ft	No

210 October Drive, Butler, Pennsylvania 16002, United States



Room Dimensions

Floor 3

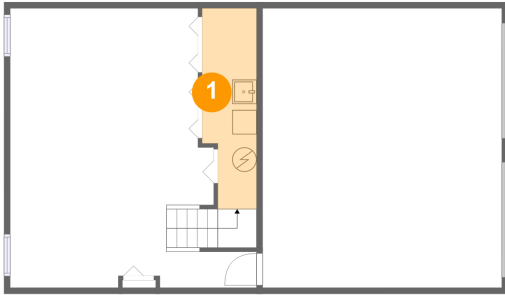
Total sqft: 1060

Living area: 698

#	Room name	Dimensions	Area (sqft)	Counted as Living Area
13	Room	11'3" x 7'1"	34 sq. ft	Yes
14	Hall	15'3" x 4'10"	116 sq. ft	Yes
15	Room	8'1" x 24'6"	131 sq. ft	Yes
16	Bath	8'1" x 8'1"	57 sq. ft	Yes
17	W.i.c.	12'2" x 5'3"	12 sq. ft	Yes
18	W.i.c.	4'4" x 12'3"	35 sq. ft	Yes
19	Open To Below	11'9" x 11'11"	137 sq. ft	No
20	Primary Bedroom	16'10" x 18'11"	245 sq. ft	Yes

210 October Drive, Butler, Pennsylvania 16002, United States

1 Floor 1 - Utility



Dimensions: 4'6" x 16'6"
Area: 67 sq. ft
Counted as Living Area:
Yes

Heated: Yes
Finished: Yes
Enclosed: Yes
Contiguous:
Yes
Permitted: Yes
Wet Space: No
Addition: No
Conversion: No

2 Floor 1 - Recreation Room

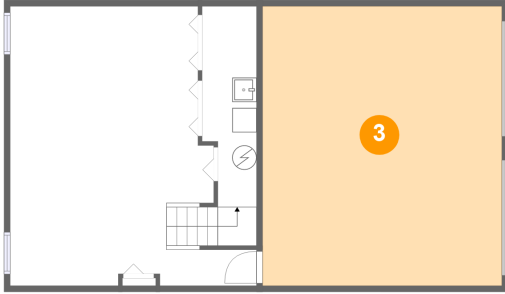


Dimensions: 16'9" x 23'0"
Area: 389 sq. ft
Counted as Living Area:
Yes

Heated: Yes
Finished: Yes
Enclosed: Yes
Contiguous:
Yes
Permitted: Yes
Wet Space: No
Addition: No
Conversion: No

210 October Drive, Butler, Pennsylvania 16002, United States

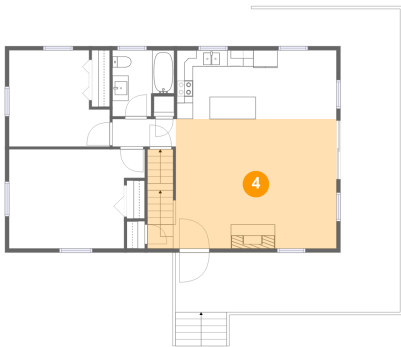
3 Floor 1 - Garage



Dimensions: 19'9" x 23'0"
Area: 453 sq. ft
Counted as Living Area: No

Heated: No
Finished: No
Enclosed: Yes
Contiguous: Yes
Permitted: Yes
Wet Space: No
Addition: No
Conversion: No

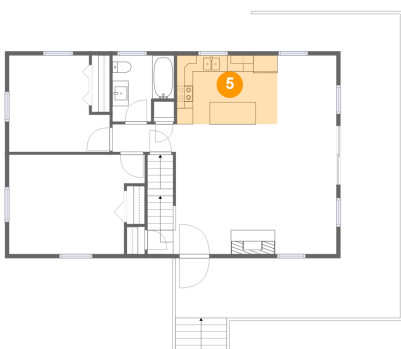
4 Floor 2 - Living Room



Dimensions: 19'11" x 16'0"
Area: 359 sq. ft
Counted as Living Area:
Yes

Heated: Yes
Finished: Yes
Enclosed: Yes
Contiguous:
Yes
Permitted: Yes
Wet Space: No
Addition: No
Conversion: No

5 Floor 2 - Kitchen

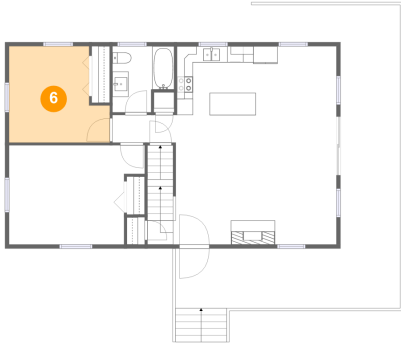


Dimensions: 12'5" x 8'6"
Area: 106 sq. ft
Counted as Living Area:
Yes

Heated: Yes
Finished: Yes
Enclosed: Yes
Contiguous:
Yes
Permitted: Yes
Wet Space: No
Addition: No
Conversion: No

210 October Drive, Butler, Pennsylvania 16002, United States

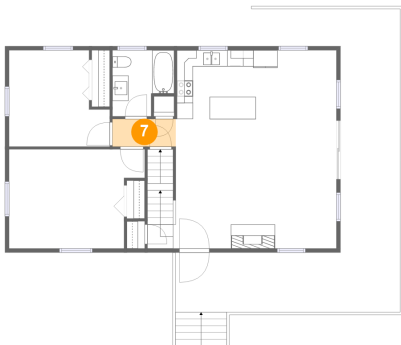
6 Floor 2 - Bedroom



Dimensions: 12'6" x 11'11"
Area: 130 sq. ft
Counted as Living Area:
Yes

Heated: Yes
Finished: Yes
Enclosed: Yes
Contiguous:
Yes
Permitted: Yes
Wet Space: No
Addition: No
Conversion: No

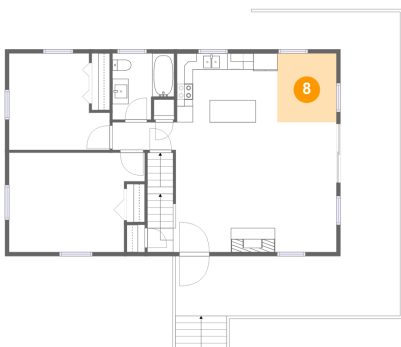
7 Floor 2 - Hall



Dimensions: 7'10" x 3'5"
Area: 27 sq. ft
Counted as Living Area:
Yes

Heated: Yes
Finished: Yes
Enclosed: Yes
Contiguous:
Yes
Permitted: Yes
Wet Space: No
Addition: No
Conversion: No

8 Floor 2 - Dining Area

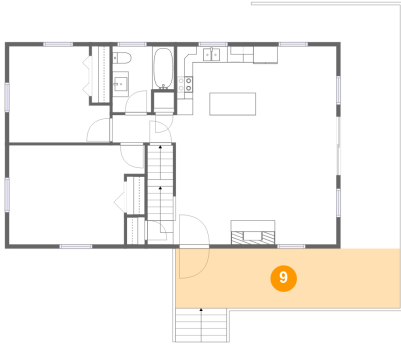


Dimensions: 7'4" x 8'6"
Area: 62 sq. ft
Counted as Living Area:
Yes

Heated: Yes
Finished: Yes
Enclosed: Yes
Contiguous:
Yes
Permitted: Yes
Wet Space: No
Addition: No
Conversion: No

210 October Drive, Butler, Pennsylvania 16002, United States

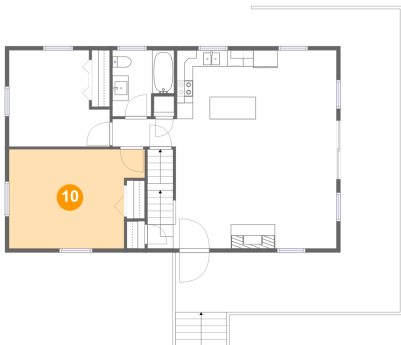
9 Floor 2 - Porch



Dimensions: 27'10" x 7'4"
Area: 205 sq. ft
Counted as Living Area: No

Heated: No
Finished: Yes
Enclosed: No
Contiguous: Yes
Permitted: Yes
Wet Space: No
Addition: No
Conversion: No

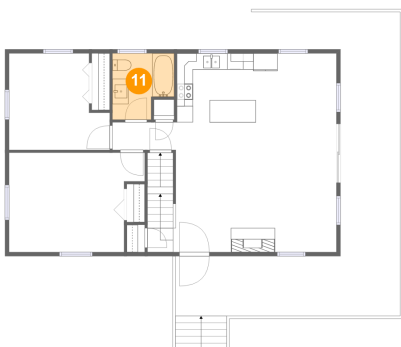
10 Floor 2 - Bedroom



Dimensions: 16'10" x 12'3"
Area: 184 sq. ft
Counted as Living Area:
Yes

Heated: Yes
Finished: Yes
Enclosed: Yes
Contiguous:
Yes
Permitted: Yes
Wet Space: No
Addition: No
Conversion: No

11 Floor 2 - Bath

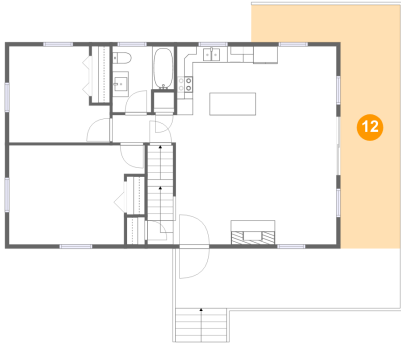


Dimensions: 7'8" x 8'2"
Area: 54 sq. ft
Counted as Living Area:
Yes

Heated: Yes
Finished: Yes
Enclosed: Yes
Contiguous:
Yes
Permitted: Yes
Wet Space: Yes
Addition: No
Conversion: No

210 October Drive, Butler, Pennsylvania 16002, United States

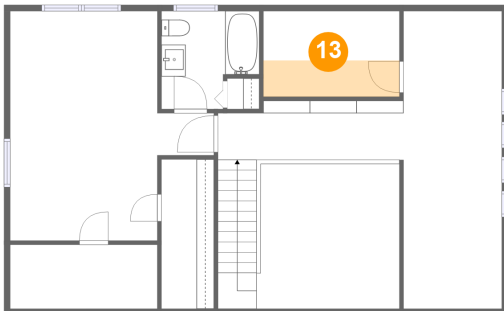
12 Floor 2 - Deck



Dimensions: 18'5" x 30'1"
Area: 274 sq. ft
Counted as Living Area: No

Heated: No
Finished: Yes
Enclosed: No
Contiguous: Yes
Permitted: Yes
Wet Space: No
Addition: No
Conversion: No

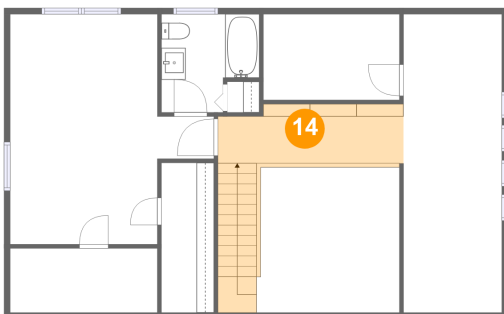
13 Floor 3 - Room



Dimensions: 11'3" x 7'1"
Area: 34 sq. ft
Counted as Living Area:
Yes

Heated: Yes
Finished: Yes
Enclosed: Yes
Contiguous:
Yes
Permitted: Yes
Wet Space: No
Addition: No
Conversion: No

14 Floor 3 - Hall

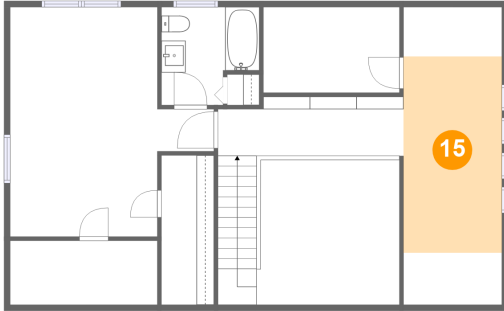


Dimensions: 15'3" x 4'10"
Area: 116 sq. ft
Counted as Living Area:
Yes

Heated: Yes
Finished: Yes
Enclosed: Yes
Contiguous:
Yes
Permitted: Yes
Wet Space: No
Addition: No
Conversion: No

210 October Drive, Butler, Pennsylvania 16002, United States

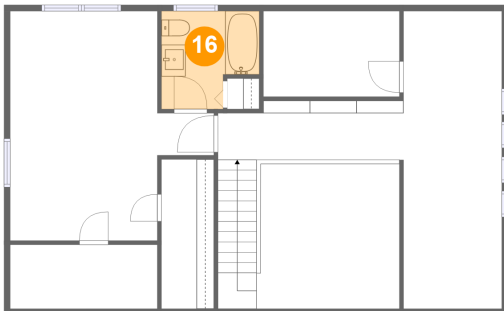
15 Floor 3 - Room



Dimensions: 8'1" x 24'6"
Area: 131 sq. ft
Counted as Living Area:
Yes

Heated: Yes
Finished: Yes
Enclosed: Yes
Contiguous:
Yes
Permitted: Yes
Wet Space: No
Addition: No
Conversion: No

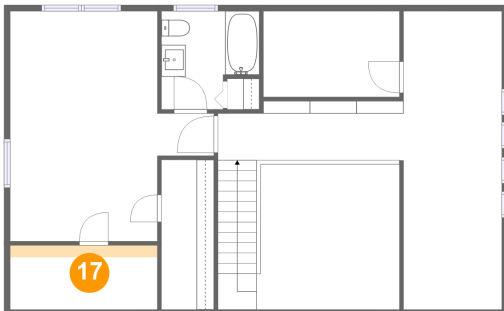
16 Floor 3 - Bath



Dimensions: 8'1" x 8'1"
Area: 57 sq. ft
Counted as Living Area:
Yes

Heated: Yes
Finished: Yes
Enclosed: Yes
Contiguous:
Yes
Permitted: Yes
Wet Space: Yes
Addition: No
Conversion: No

17 Floor 3 - W.i.c.

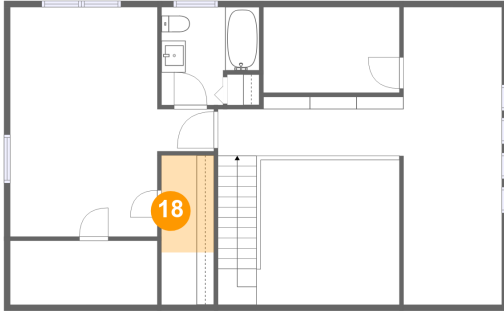


Dimensions: 12'2" x 5'3"
Area: 12 sq. ft
Counted as Living Area:
Yes

Heated: Yes
Finished: Yes
Enclosed: Yes
Contiguous:
Yes
Permitted: Yes
Wet Space: No
Addition: No
Conversion: No

210 October Drive, Butler, Pennsylvania 16002, United States

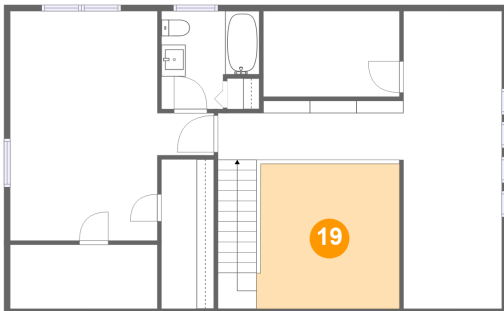
18 Floor 3 - W.i.c.



Dimensions: 4'4" x 12'3"
Area: 35 sq. ft
Counted as Living Area:
Yes

Heated: Yes
Finished: Yes
Enclosed: Yes
Contiguous:
Yes
Permitted: Yes
Wet Space: No
Addition: No
Conversion: No

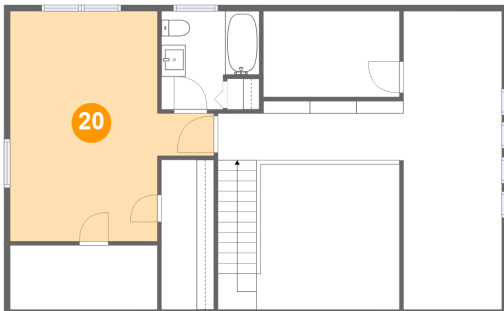
19 Floor 3 - Open To Below



Dimensions: 11'9" x 11'11"
Area: 137 sq. ft
Counted as Living Area: No

Heated: No
Finished: No
Enclosed: No
Contiguous: Yes
Permitted: No
Wet Space: No
Addition: No
Conversion: No

20 Floor 3 - Primary Bedroom



Dimensions: 16'10" x 18'11"
Area: 245 sq. ft
Counted as Living Area:
Yes

Heated: Yes
Finished: Yes
Enclosed: Yes
Contiguous:
Yes
Permitted: Yes
Wet Space: No
Addition: No
Conversion: No