


1723 7th Ave, Belle Fourche, SD, US



Property summary

 **0** Garages

 **3** Bedrooms

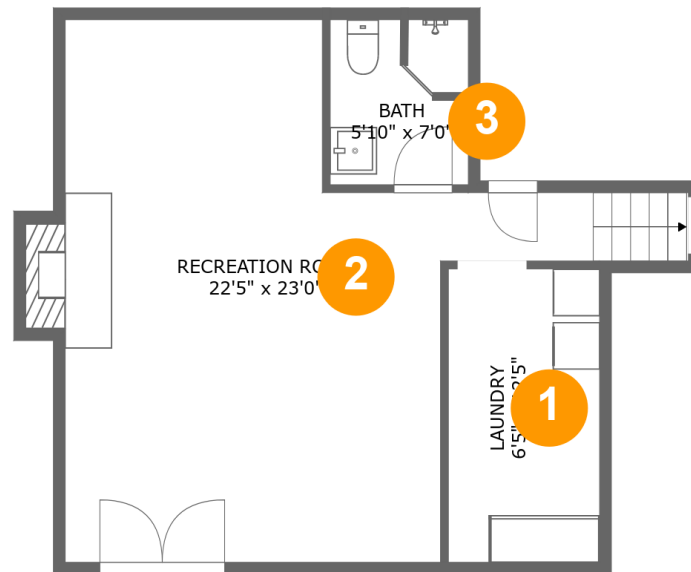
 **2** Bathrooms

 **0** Half baths

 **3** Floors

 **1,856** Gross living area sqft

 **1,865** Total sqft

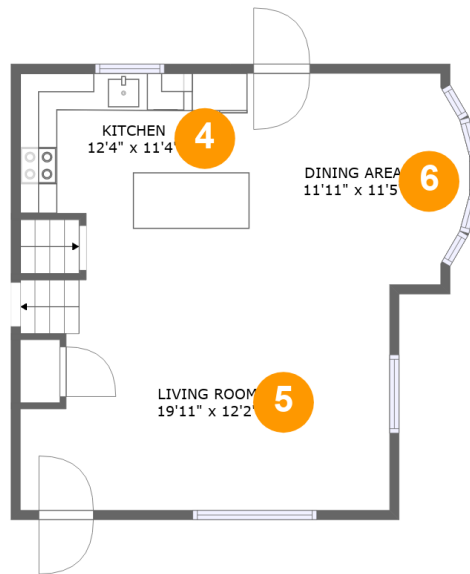
1723 7th Ave, Belle Fourche, SD, US

Room dimensions

Floor 1

Total sqft: 552 Living area: 543

#		Dimensions	sqft	Counted as living area
1	Laundry	6'5" x 12'5"	80 sq. ft	Yes
2	Recreation Room	22'5" x 23'0"	369 sq. ft	Yes
3	Bath	5'10" x 7'0"	40 sq. ft	Yes

1723 7th Ave, Belle Fourche, SD, US

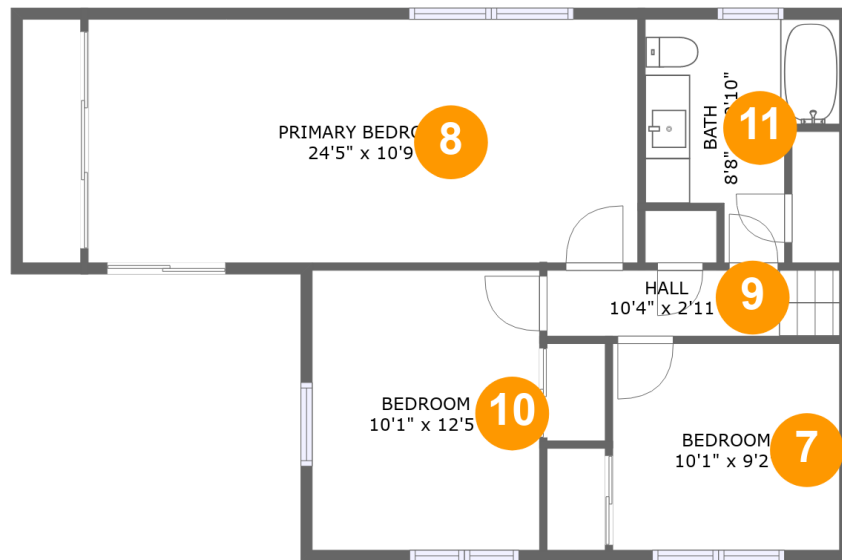
Room dimensions

Floor 2

Total sqft: 560 Living area: 560

#		Dimensions	sqft	Counted as living area
4	Kitchen	12'4" x 11'4"	128 sq. ft	Yes
5	Living Room	19'11" x 12'2"	233 sq. ft	Yes
6	Dining Area	11'11" x 11'5"	128 sq. ft	Yes

1723 7th Ave, Belle Fourche, SD, US



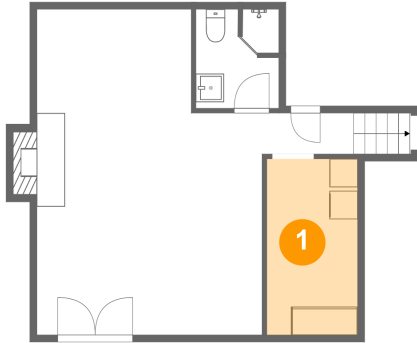
Room dimensions

Floor 3

Total sqft: 753 Living area: 753

#		Dimensions	sqft	Counted as living area
7	Bedroom	10'1" x 9'2"	93 sq. ft	Yes
8	Primary Bedroom	24'5" x 10'9"	264 sq. ft	Yes
9	Hall	10'4" x 2'11"	38 sq. ft	Yes
10	Bedroom	10'1" x 12'5"	126 sq. ft	Yes
11	Bath	8'8" x 10'10"	69 sq. ft	Yes

1 Floor 1 - Laundry



Dimensions: 6'5" x 12'5"
Area: 80 sq. ft
Counted as living area: Yes

Heated: Yes
Finished: Yes
Enclosed: Yes
Contiguous: Yes
Permitted: Yes
Wet space: No
Addition: No
Conversion: No

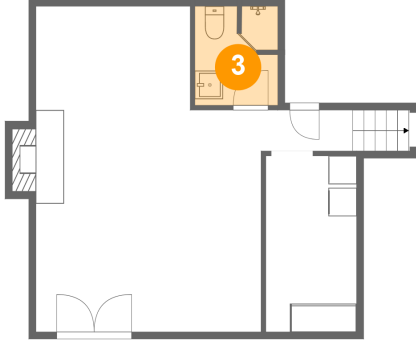
2 Floor 1 - Recreation Room



Dimensions: 22'5" x 23'0"
Area: 369 sq. ft
Counted as living area: Yes

Heated: Yes
Finished: Yes
Enclosed: Yes
Contiguous: Yes
Permitted: Yes
Wet space: No
Addition: No
Conversion: No

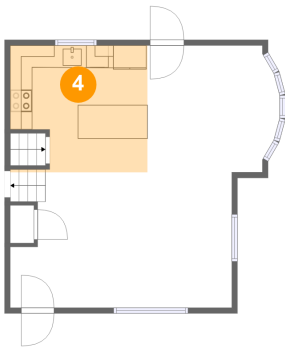
3 Floor 1 - Bath



Dimensions: 5'10" x 7'0"
Area: 40 sq. ft
Counted as living area: Yes

Heated: Yes
Finished: Yes
Enclosed: Yes
Contiguous: Yes
Permitted: Yes
Wet space: Yes
Addition: No
Conversion: No

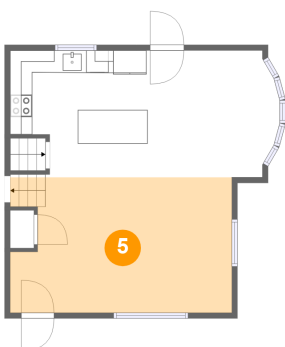
4 Floor 2 - Kitchen



Dimensions: 12'4" x 11'4"
Area: 128 sq. ft
Counted as living area: Yes

Heated: Yes
Finished: Yes
Enclosed: Yes
Contiguous: Yes
Permitted: Yes
Wet space: No
Addition: No
Conversion: No

5 Floor 2 - Living Room



Dimensions: 19'11" x 12'2"
Area: 233 sq. ft
Counted as living area: Yes

Heated: Yes
Finished: Yes
Enclosed: Yes
Contiguous: Yes
Permitted: Yes
Wet space: No
Addition: No
Conversion: No

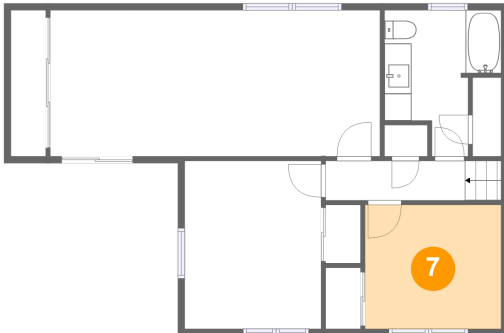
6 Floor 2 - Dining Area



Dimensions: 11'11" x 11'5"
Area: 128 sq. ft
Counted as living area: Yes

Heated: Yes
Finished: Yes
Enclosed: Yes
Contiguous: Yes
Permitted: Yes
Wet space: No
Addition: No
Conversion: No

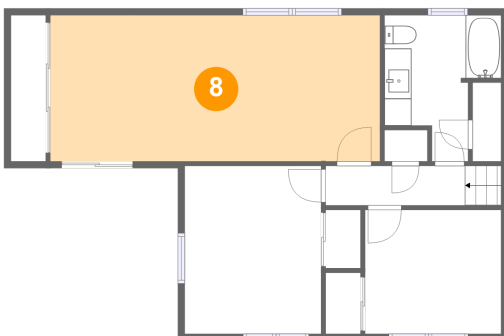
7 Floor 3 - Bedroom



Dimensions: 10'1" x 9'2"
Area: 93 sq. ft
Counted as living area: Yes

Heated: Yes
Finished: Yes
Enclosed: Yes
Contiguous: Yes
Permitted: Yes
Wet space: No
Addition: No
Conversion: No

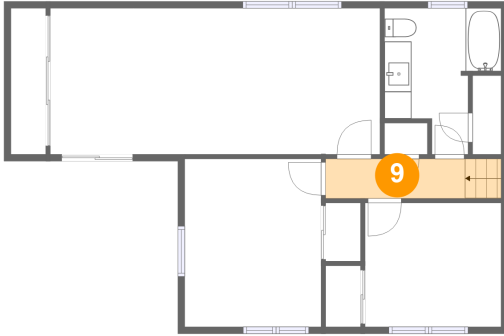
8 Floor 3 - Primary Bedroom



Dimensions: 24'5" x 10'9"
Area: 264 sq. ft
Counted as living area: Yes

Heated: Yes
Finished: Yes
Enclosed: Yes
Contiguous: Yes
Permitted: Yes
Wet space: No
Addition: No
Conversion: No

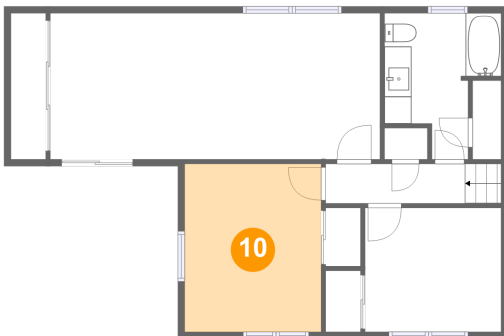
9 Floor 3 - Hall



Dimensions: 10'4" x 2'11"
Area: 38 sq. ft
Counted as living area: Yes

Heated: Yes
Finished: Yes
Enclosed: Yes
Contiguous: Yes
Permitted: Yes
Wet space: No
Addition: No
Conversion: No

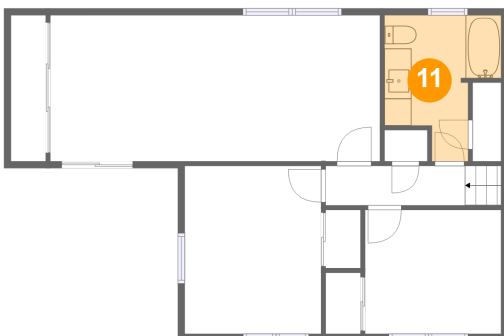
10 Floor 3 - Bedroom



Dimensions: 10'1" x 12'5"
Area: 126 sq. ft
Counted as living area: Yes

Heated: Yes
Finished: Yes
Enclosed: Yes
Contiguous: Yes
Permitted: Yes
Wet space: No
Addition: No
Conversion: No

11 Floor 3 - Bath



Dimensions: 8'8" x 10'10"
Area: 69 sq. ft
Counted as living area: Yes

Heated: Yes
Finished: Yes
Enclosed: Yes
Contiguous: Yes
Permitted: Yes
Wet space: Yes
Addition: No
Conversion: No