

Home report

6201 Monet Drive, Roanoke, Roanoke County, Virginia, United States, 24018




Total Area: 2445 sq. ft

Floor 1: 473 sq. ft, Floor 2: 928 sq. ft, Floor 3: 1044 sq. ft

Excluded: Basement 388 sq. ft, Patio 248 sq. ft, Fireplace 27 sq. ft, Garage 360 sq. ft, Porch 48 sq. ft, Deck 174 sq. ft, Walls: 238 sq. ft

Property summary

 **3** Floors

 **4** Bedrooms

 **3** Bathrooms

Home report

6201 Monet Drive, Roanoke, Roanoke County, Virginia, United States, 24018

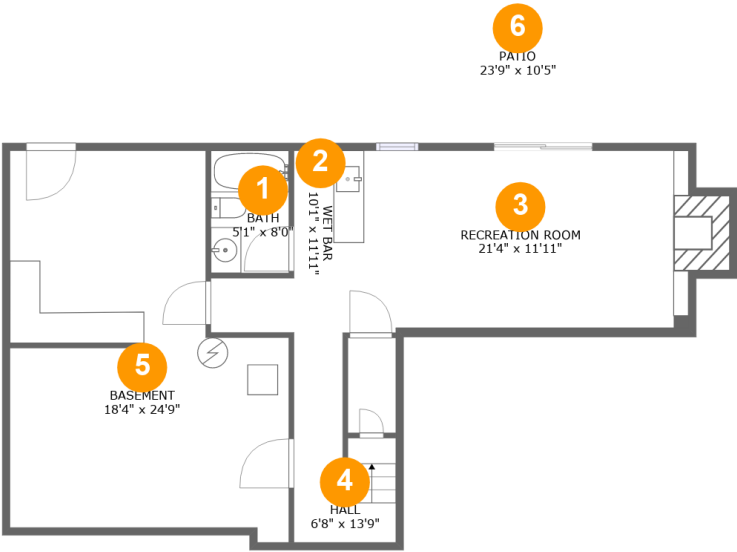


1
Half baths



1
Garages

6201 Monet Drive, Roanoke, Roanoke County, Virginia, United States, 24018



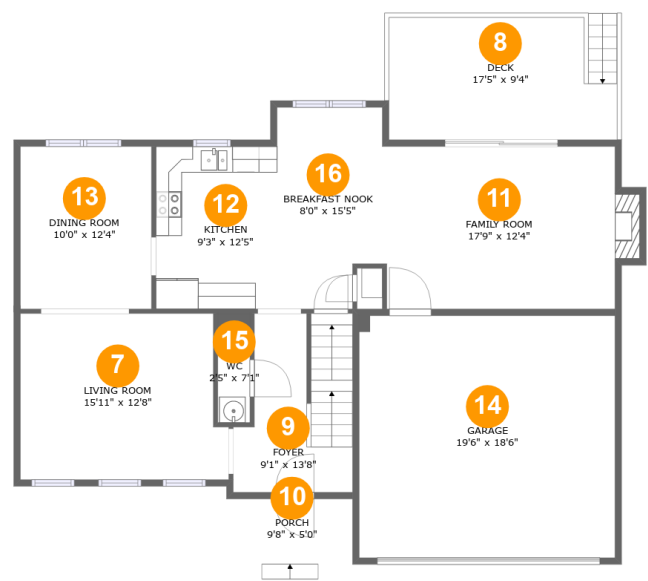
Room dimensions

Floor 1 Total:473sqft Excluded: 652sqft

#		Max Dimensions	sqft	Included
1	Bath	5'1" x 8'0"	41 sq. ft	Yes
2	Wet Bar	10'1" x 11'11"	74 sq. ft	Yes
3	Recreation Room	21'4" x 11'11"	262 sq. ft	Yes
4	Hall	6'8" x 13'9"	67 sq. ft	Yes
5	Basement	18'4" x 24'9"	385 sq. ft	No
6	Patio	23'9" x 10'5"	248 sq. ft	No

Home report

6201 Monet Drive, Roanoke, Roanoke County, Virginia, United States, 24018



Room dimensions

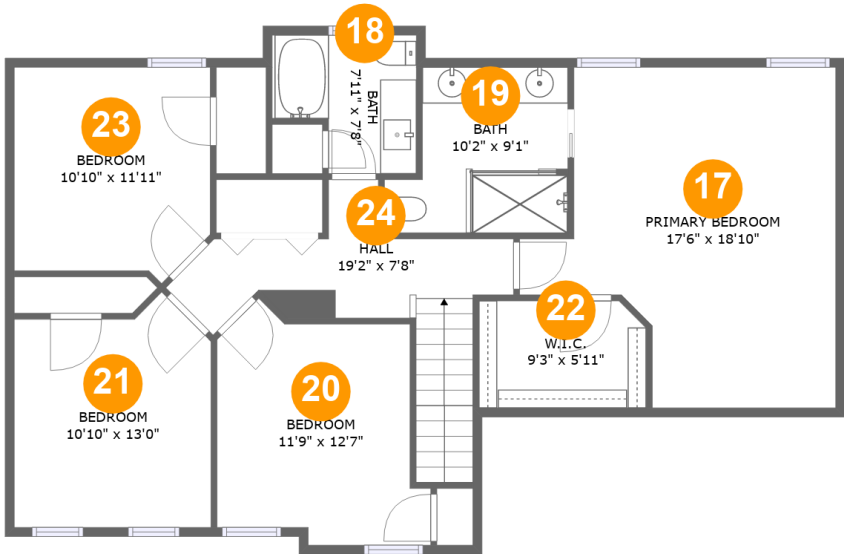
Floor 2

Total:928sqft Excluded: 593sqft

#		Max Dimensions	sqft	Included
7	Living Room	15'11" x 12'8"	191 sq. ft	Yes
8	Deck	17'5" x 9'4"	174 sq. ft	No
9	Foyer	9'1" x 13'8"	108 sq. ft	Yes
10	Porch	9'8" x 5'0"	48 sq. ft	No
11	Family Room	17'9" x 12'4"	228 sq. ft	Yes
12	Kitchen	9'3" x 12'5"	115 sq. ft	Yes
13	Dining Room	10'0" x 12'4"	124 sq. ft	Yes
14	Garage	19'6" x 18'6"	360 sq. ft	No
15	WC	2'5" x 7'1"	20 sq. ft	Yes
16	Breakfast Nook	8'0" x 15'5"	116 sq. ft	Yes

Home report

6201 Monet Drive, Roanoke, Roanoke County, Virginia, United States, 24018



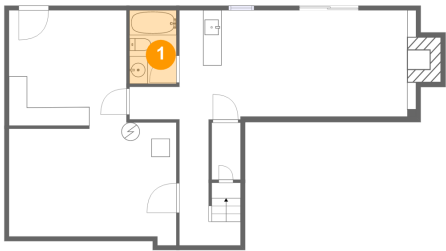
Room dimensions

Floor 3 Total:1044sqft Excluded: 0sqft

#		Max Dimensions	sqft	Included
17	Primary Bedroom	17'6" x 18'10"	256 sq. ft	Yes
18	Bath	7'11" x 7'8"	51 sq. ft	Yes
19	Bath	10'2" x 9'1"	79 sq. ft	Yes
20	Bedroom	11'9" x 12'7"	131 sq. ft	Yes
21	Bedroom	10'10" x 13'0"	126 sq. ft	Yes
22	W.I.C.	9'3" x 5'11"	53 sq. ft	Yes
23	Bedroom	10'10" x 11'11"	120 sq. ft	Yes
24	Hall	19'2" x 7'8"	112 sq. ft	Yes

6201 Monet Drive, Roanoke, Roanoke County, Virginia, United States, 24018

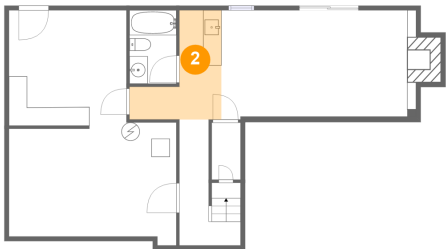
1 Floor 1 - Bath



Max Dimensions: 5'1" x 8'0"
Calculated Area: 41 sq. ft
Included: Yes

Heated: Yes
Finished: Yes
Enclosed: Yes
Contiguous: Yes
Permitted: Yes
Wet space: Yes
Addition: No
Conversion: No

2 Floor 1 - Wet Bar

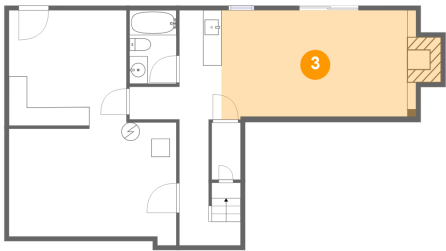


Max Dimensions: 10'1" x 11'11"
Calculated Area: 74 sq. ft
Included: Yes

Heated: Yes
Finished: Yes
Enclosed: Yes
Contiguous: Yes
Permitted: Yes
Wet space: No
Addition: No
Conversion: No

6201 Monet Drive, Roanoke, Roanoke County, Virginia, United States, 24018

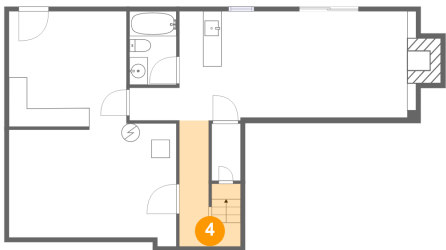
3 Floor 1 - Recreation Room



Max Dimensions: 21'4" x 11'11"
Calculated Area: 262 sq. ft
Included: Yes

Heated: Yes
Finished: Yes
Enclosed: Yes
Contiguous: Yes
Permitted: Yes
Wet space: No
Addition: No
Conversion: No

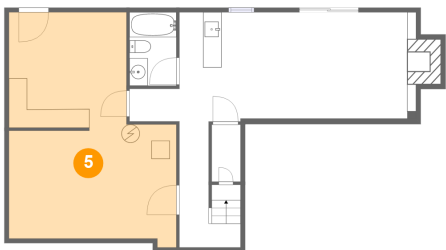
4 Floor 1 - Hall



Max Dimensions: 6'8" x 13'9"
Calculated Area: 67 sq. ft
Included: Yes

Heated: Yes
Finished: Yes
Enclosed: Yes
Contiguous: Yes
Permitted: Yes
Wet space: No
Addition: No
Conversion: No

5 Floor 1 - Basement

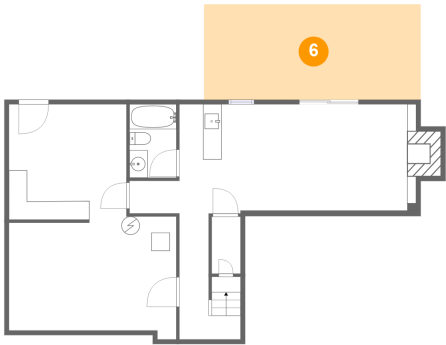


Max Dimensions: 18'4" x 24'9"
Calculated Area: 385 sq. ft
Included: No

Heated: Yes
Finished: No
Enclosed: Yes
Contiguous: Yes
Permitted: Yes
Wet space: No
Addition: No
Conversion: No

6201 Monet Drive, Roanoke, Roanoke County, Virginia, United States, 24018

6 Floor 1 - Patio



Max Dimensions: 23'9" x 10'5"
Calculated Area: 248 sq. ft
Included: No

Heated: No
Finished: Yes
Enclosed: No
Contiguous: Yes
Permitted: Yes
Wet space: No
Addition: No
Conversion: No

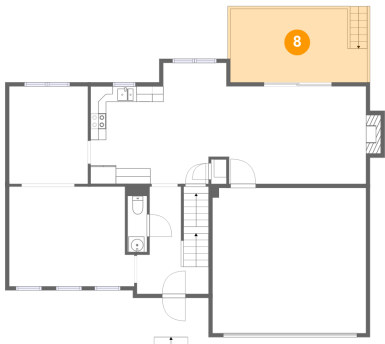
7 Floor 2 - Living Room



Max Dimensions: 15'11" x 12'8"
Calculated Area: 191 sq. ft
Included: Yes

Heated: Yes
Finished: Yes
Enclosed: Yes
Contiguous: Yes
Permitted: Yes
Wet space: No
Addition: No
Conversion: No

8 Floor 2 - Deck

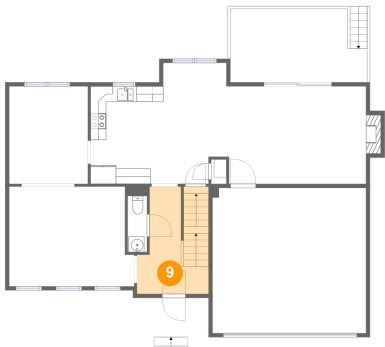


Max Dimensions: 17'5" x 9'4"
Calculated Area: 174 sq. ft
Included: No

Heated: No
Finished: Yes
Enclosed: No
Contiguous: Yes
Permitted: Yes
Wet space: No
Addition: No
Conversion: No

6201 Monet Drive, Roanoke, Roanoke County, Virginia, United States, 24018

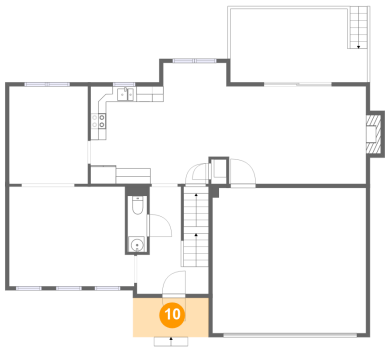
9 Floor 2 - Foyer



Max Dimensions: 9'1" x 13'8"
Calculated Area: 108 sq. ft
Included: Yes

Heated: Yes
Finished: Yes
Enclosed: Yes
Contiguous: Yes
Permitted: Yes
Wet space: No
Addition: No
Conversion: No

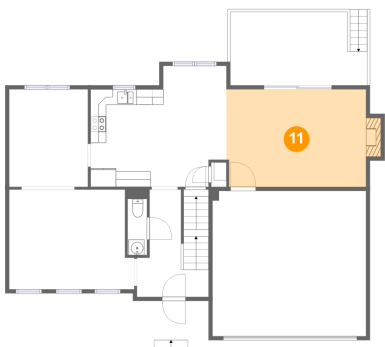
10 Floor 2 - Porch



Max Dimensions: 9'8" x 5'0"
Calculated Area: 48 sq. ft
Included: No

Heated: No
Finished: Yes
Enclosed: No
Contiguous: Yes
Permitted: Yes
Wet space: No
Addition: No
Conversion: No

11 Floor 2 - Family Room

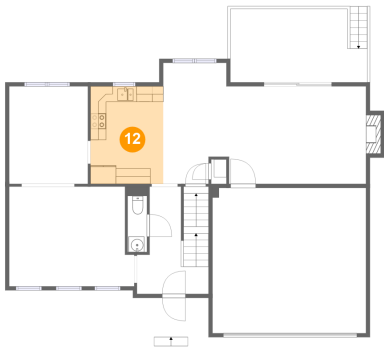


Max Dimensions: 17'9" x 12'4"
Calculated Area: 228 sq. ft
Included: Yes

Heated: Yes
Finished: Yes
Enclosed: Yes
Contiguous: Yes
Permitted: Yes
Wet space: No
Addition: No
Conversion: No

6201 Monet Drive, Roanoke, Roanoke County, Virginia, United States, 24018

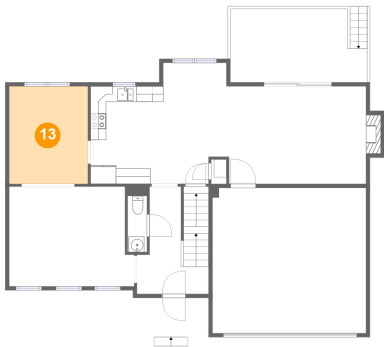
12 Floor 2 - Kitchen



Max Dimensions: 9'3" x 12'5"
Calculated Area: 115 sq. ft
Included: Yes

Heated: Yes
Finished: Yes
Enclosed: Yes
Contiguous: Yes
Permitted: Yes
Wet space: No
Addition: No
Conversion: No

13 Floor 2 - Dining Room



Max Dimensions: 10'0" x 12'4"
Calculated Area: 124 sq. ft
Included: Yes

Heated: Yes
Finished: Yes
Enclosed: Yes
Contiguous: Yes
Permitted: Yes
Wet space: No
Addition: No
Conversion: No

14 Floor 2 - Garage

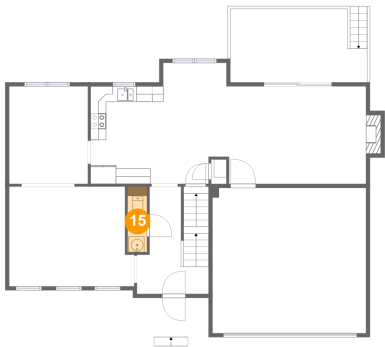


Max Dimensions: 19'6" x 18'6"
Calculated Area: 360 sq. ft
Included: No

Heated: No
Finished: No
Enclosed: Yes
Contiguous: Yes
Permitted: Yes
Wet space: No
Addition: No
Conversion: No

6201 Monet Drive, Roanoke, Roanoke County, Virginia, United States, 24018

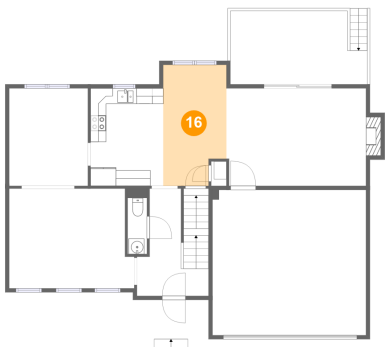
15 Floor 2 - WC



Max Dimensions: 2'5" x 7'1"
Calculated Area: 20 sq. ft
Included: Yes

Heated: Yes
Finished: Yes
Enclosed: Yes
Contiguous: Yes
Permitted: Yes
Wet space: Yes
Addition: No
Conversion: No

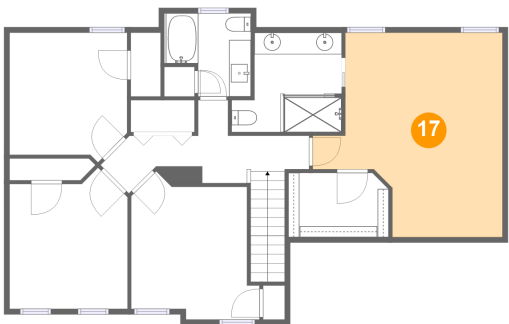
16 Floor 2 - Breakfast Nook



Max Dimensions: 8'0" x 15'5"
Calculated Area: 116 sq. ft
Included: Yes

Heated: Yes
Finished: Yes
Enclosed: Yes
Contiguous: Yes
Permitted: Yes
Wet space: No
Addition: No
Conversion: No

17 Floor 3 - Primary Bedroom

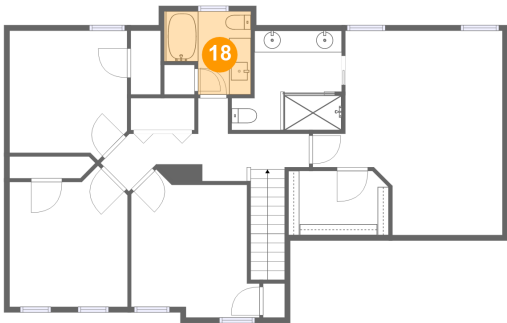


Max Dimensions: 17'6" x 18'10"
Calculated Area: 256 sq. ft
Included: Yes

Heated: Yes
Finished: Yes
Enclosed: Yes
Contiguous: Yes
Permitted: Yes
Wet space: No
Addition: No
Conversion: No

6201 Monet Drive, Roanoke, Roanoke County, Virginia, United States, 24018

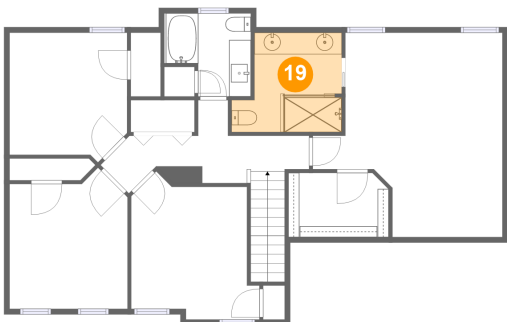
18 Floor 3 - Bath



Max Dimensions: 7'11" x 7'8"
Calculated Area: 51 sq. ft
Included: Yes

Heated: Yes
Finished: Yes
Enclosed: Yes
Contiguous: Yes
Permitted: Yes
Wet space: Yes
Addition: No
Conversion: No

19 Floor 3 - Bath



Max Dimensions: 10'2" x 9'1"
Calculated Area: 79 sq. ft
Included: Yes

Heated: Yes
Finished: Yes
Enclosed: Yes
Contiguous: Yes
Permitted: Yes
Wet space: Yes
Addition: No
Conversion: No

20 Floor 3 - Bedroom

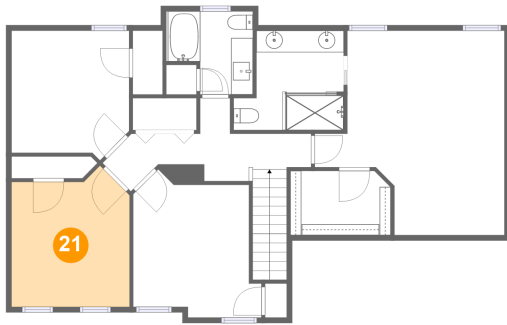


Max Dimensions: 11'9" x 12'7"
Calculated Area: 131 sq. ft
Included: Yes

Heated: Yes
Finished: Yes
Enclosed: Yes
Contiguous: Yes
Permitted: Yes
Wet space: No
Addition: No
Conversion: No

6201 Monet Drive, Roanoke, Roanoke County, Virginia, United States, 24018

21 Floor 3 - Bedroom



Max Dimensions: 10'10" x 13'0"
Calculated Area: 126 sq. ft
Included: Yes

Heated: Yes
Finished: Yes
Enclosed: Yes
Contiguous: Yes
Permitted: Yes
Wet space: No
Addition: No
Conversion: No

22 Floor 3 - W.I.C.



Max Dimensions: 9'3" x 5'11"
Calculated Area: 53 sq. ft
Included: Yes

Heated: Yes
Finished: Yes
Enclosed: Yes
Contiguous: Yes
Permitted: Yes
Wet space: No
Addition: No
Conversion: No

23 Floor 3 - Bedroom

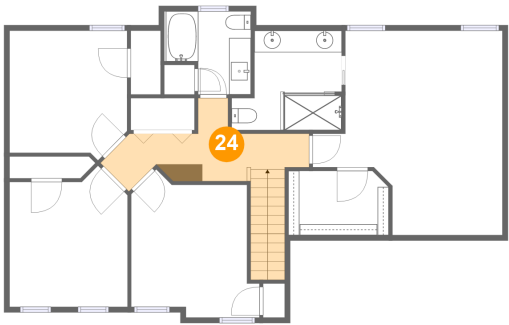


Max Dimensions: 10'10" x 11'11"
Calculated Area: 120 sq. ft
Included: Yes

Heated: Yes
Finished: Yes
Enclosed: Yes
Contiguous: Yes
Permitted: Yes
Wet space: No
Addition: No
Conversion: No

6201 Monet Drive, Roanoke, Roanoke County, Virginia, United States, 24018

24 Floor 3 - Hall



Max Dimensions: 19'2" x 7'8"
Calculated Area: 112 sq. ft
Included: Yes

Heated: Yes
Finished: Yes
Enclosed: Yes
Contiguous: Yes
Permitted: Yes
Wet space: No
Addition: No
Conversion: No