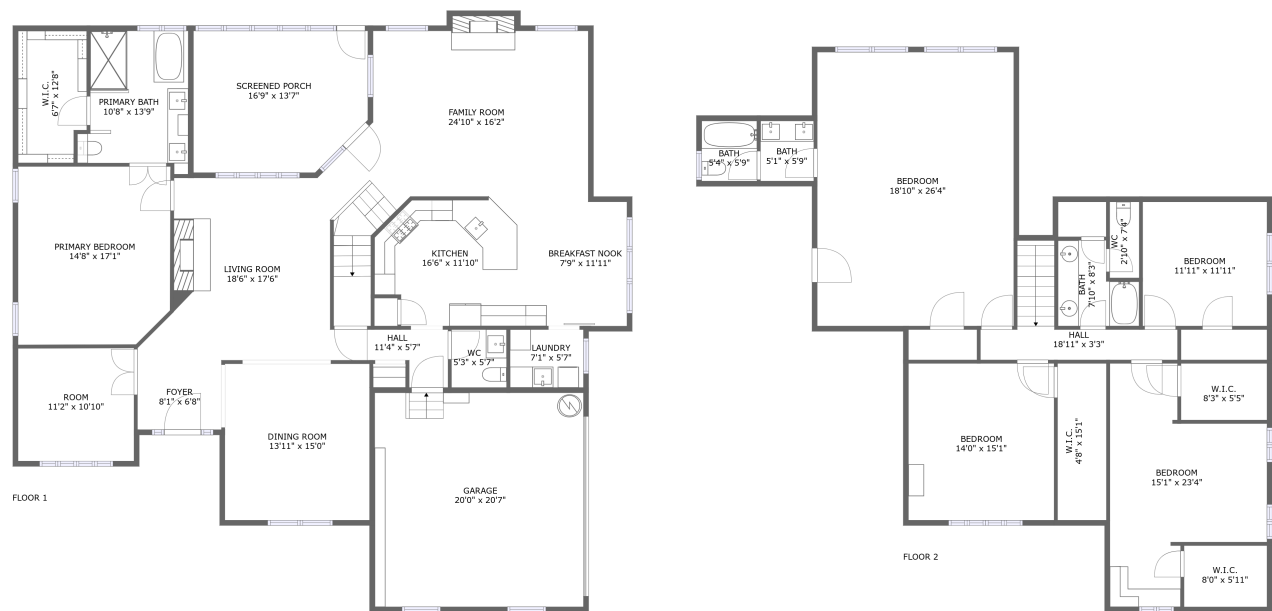


Home report

140 High Coach Way, Madison, Madison County, Alabama,
United States, 35758



Total Area: 3806 sq. ft
Floor 1: 2092 sq. ft, Floor 2: 1714 sq. ft
Excluded: Garage 436 sq. ft, Outdoor Porch Screen 223 sq. ft, Fireplace 10 sq. ft

Property summary

 **2** Floors

 **5** Bedrooms

 **3** Bathrooms

Home report

**140 High Coach Way, Madison, Madison County, Alabama,
United States, 35758**



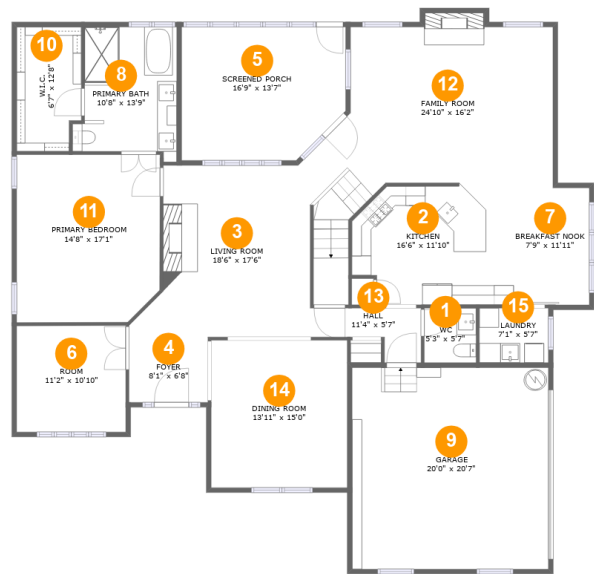
1
Half baths



1
Garages

Home report

140 High Coach Way, Madison, Madison County, Alabama,
United States, 35758



Room dimensions

Floor 1 Total:2092sqft Excluded: 669sqft

| # | | Max Dimensions | sqft | Included |
|----|-----------------|----------------|------------|----------|
| 1 | WC | 5'3" x 5'7" | 29 sq. ft | Yes |
| 2 | Kitchen | 16'6" x 11'10" | 184 sq. ft | Yes |
| 3 | Living Room | 18'6" x 17'6" | 326 sq. ft | Yes |
| 4 | Foyer | 8'1" x 6'8" | 54 sq. ft | Yes |
| 5 | Screened Porch | 16'9" x 13'7" | 215 sq. ft | No |
| 6 | Room | 11'2" x 10'10" | 121 sq. ft | Yes |
| 7 | Breakfast Nook | 7'9" x 11'11" | 93 sq. ft | Yes |
| 8 | Primary Bath | 10'8" x 13'9" | 124 sq. ft | Yes |
| 9 | Garage | 20'0" x 20'7" | 412 sq. ft | No |
| 10 | W.I.C. | 6'7" x 12'8" | 80 sq. ft | Yes |
| 11 | Primary Bedroom | 14'8" x 17'1" | 245 sq. ft | Yes |

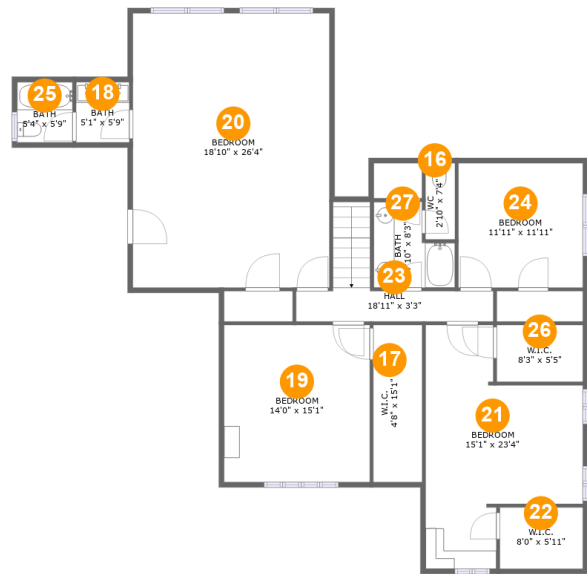
Home report

**140 High Coach Way, Madison, Madison County, Alabama,
United States, 35758**

| # | | Max Dimensions | sqft | Included |
|----|-------------|----------------|------------|----------|
| 12 | Family Room | 24'10" x 16'2" | 363 sq. ft | Yes |
| 13 | Hall | 11'4" x 5'7" | 43 sq. ft | Yes |
| 14 | Dining Room | 13'11" x 15'0" | 209 sq. ft | Yes |
| 15 | Laundry | 7'1" x 5'7" | 39 sq. ft | Yes |

Home report

140 High Coach Way, Madison, Madison County, Alabama,
United States, 35758



Room dimensions

Floor 2 Total:1714sqft Excluded: 0sqft

| # | | Max Dimensions | sqft | Included |
|----|---------|-----------------|------------|----------|
| 16 | WC | 2'10" x 7'4" | 21 sq. ft | Yes |
| 17 | W.I.C. | 4'8" x 15'1" | 71 sq. ft | Yes |
| 18 | Bath | 5'1" x 5'9" | 30 sq. ft | Yes |
| 19 | Bedroom | 14'0" x 15'1" | 210 sq. ft | Yes |
| 20 | Bedroom | 18'10" x 26'4" | 496 sq. ft | Yes |
| 21 | Bedroom | 15'1" x 23'4" | 251 sq. ft | Yes |
| 22 | W.I.C. | 8'0" x 5'11" | 47 sq. ft | Yes |
| 23 | Hall | 18'11" x 3'3" | 86 sq. ft | Yes |
| 24 | Bedroom | 11'11" x 11'11" | 142 sq. ft | Yes |
| 25 | Bath | 5'4" x 5'9" | 31 sq. ft | Yes |
| 26 | W.I.C. | 8'3" x 5'5" | 45 sq. ft | Yes |

Home report

140 High Coach Way, Madison, Madison County, Alabama,
United States, 35758

| # | | Max Dimensions | sqft | Included |
|----|------|----------------|-----------|----------|
| 27 | Bath | 7'10" x 8'3" | 52 sq. ft | Yes |

140 High Coach Way, Madison, Madison County, Alabama,
United States, 35758

1 Floor 1 - WC



Max Dimensions: 5'3" x 5'7"
Calculated Area: 29 sq. ft
Included: Yes

Heated: Yes
Finished: Yes
Enclosed: Yes
Contiguous: Yes
Permitted: Yes
Wet space: Yes
Addition: No
Conversion: No

2 Floor 1 - Kitchen



Max Dimensions: 16'6" x
11'10"
Calculated Area: 184 sq. ft
Included: Yes

Heated: Yes
Finished: Yes
Enclosed: Yes
Contiguous:
Yes
Permitted: Yes
Wet space: No
Addition: No
Conversion: No

3 Floor 1 - Living Room



Max Dimensions: 18'6" x 17'6"
Calculated Area: 326 sq. ft
Included: Yes

Heated: Yes
Finished: Yes
Enclosed: Yes
Contiguous: Yes
Permitted: Yes
Wet space: No
Addition: No
Conversion: No

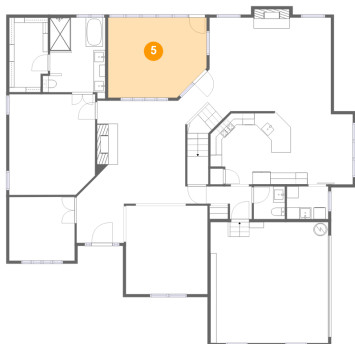
4 Floor 1 - Foyer



Max Dimensions: 8'1" x 6'8"
Calculated Area: 54 sq. ft
Included: Yes

Heated: Yes
Finished: Yes
Enclosed: Yes
Contiguous: Yes
Permitted: Yes
Wet space: No
Addition: No
Conversion: No

5 Floor 1 - Screened Porch



Max Dimensions: 16'9" x 13'7"
Calculated Area: 215 sq. ft
Included: No

Heated: No
Finished: Yes
Enclosed: No
Contiguous: Yes
Permitted: Yes
Wet space: No
Addition: No
Conversion: No

140 High Coach Way, Madison, Madison County, Alabama,
United States, 35758

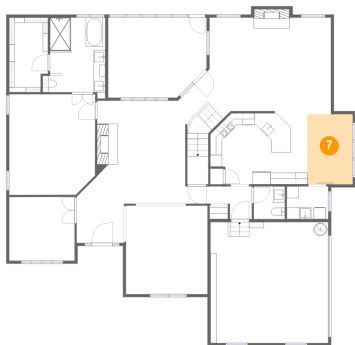
6 Floor 1 - Room



Max Dimensions: 11'2" x 10'10"
Calculated Area: 121 sq. ft
Included: Yes

Heated: Yes
Finished: Yes
Enclosed: Yes
Contiguous: Yes
Permitted: Yes
Wet space: No
Addition: No
Conversion: No

7 Floor 1 - Breakfast Nook



Max Dimensions: 7'9" x 11'11"
Calculated Area: 93 sq. ft
Included: Yes

Heated: Yes
Finished: Yes
Enclosed: Yes
Contiguous: Yes
Permitted: Yes
Wet space: No
Addition: No
Conversion: No

8 Floor 1 - Primary Bath

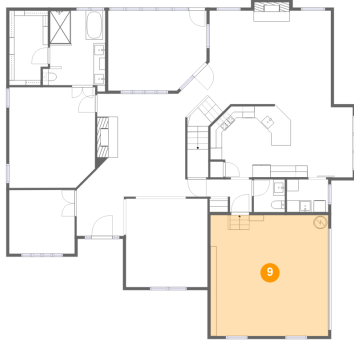


Max Dimensions: 10'8" x 13'9"
Calculated Area: 124 sq. ft
Included: Yes

Heated: Yes
Finished: Yes
Enclosed: Yes
Contiguous: Yes
Permitted: Yes
Wet space: Yes
Addition: No
Conversion: No

140 High Coach Way, Madison, Madison County, Alabama,
United States, 35758

9 Floor 1 - Garage



Max Dimensions: 20'0" x 20'7"
Calculated Area: 412 sq. ft
Included: No

Heated: No
Finished: No
Enclosed: Yes
Contiguous: Yes
Permitted: Yes
Wet space: No
Addition: No
Conversion: No

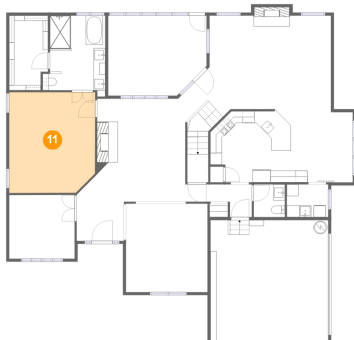
10 Floor 1 - W.I.C.



Max Dimensions: 6'7" x 12'8"
Calculated Area: 80 sq. ft
Included: Yes

Heated: Yes
Finished: Yes
Enclosed: Yes
Contiguous: Yes
Permitted: Yes
Wet space: No
Addition: No
Conversion: No

11 Floor 1 - Primary Bedroom

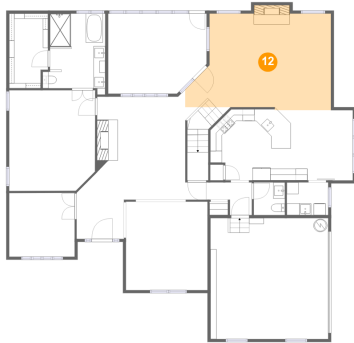


Max Dimensions: 14'8" x 17'1"
Calculated Area: 245 sq. ft
Included: Yes

Heated: Yes
Finished: Yes
Enclosed: Yes
Contiguous: Yes
Permitted: Yes
Wet space: No
Addition: No
Conversion: No

140 High Coach Way, Madison, Madison County, Alabama,
United States, 35758

12 Floor 1 - Family Room



Max Dimensions: 24'10" x 16'2"
Calculated Area: 363 sq. ft
Included: Yes

Heated: Yes
Finished: Yes
Enclosed: Yes
Contiguous: Yes
Permitted: Yes
Wet space: No
Addition: No
Conversion: No

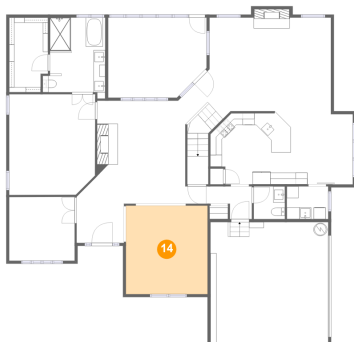
13 Floor 1 - Hall



Max Dimensions: 11'4" x 5'7"
Calculated Area: 43 sq. ft
Included: Yes

Heated: Yes
Finished: Yes
Enclosed: Yes
Contiguous: Yes
Permitted: Yes
Wet space: No
Addition: No
Conversion: No

14 Floor 1 - Dining Room



Max Dimensions: 13'11" x 15'0"
Calculated Area: 209 sq. ft
Included: Yes

Heated: Yes
Finished: Yes
Enclosed: Yes
Contiguous: Yes
Permitted: Yes
Wet space: No
Addition: No
Conversion: No

140 High Coach Way, Madison, Madison County, Alabama,
United States, 35758

15 Floor 1 - Laundry



Max Dimensions: 7'1" x 5'7"
Calculated Area: 39 sq. ft
Included: Yes

Heated: Yes
Finished: Yes
Enclosed: Yes
Contiguous: Yes
Permitted: Yes
Wet space: No
Addition: No
Conversion: No

16 Floor 2 - WC



Max Dimensions: 2'10" x 7'4"
Calculated Area: 21 sq. ft
Included: Yes

Heated: Yes
Finished: Yes
Enclosed: Yes
Contiguous: Yes
Permitted: Yes
Wet space: Yes
Addition: No
Conversion: No

17 Floor 2 - W.I.C.



Max Dimensions: 4'8" x 15'1"
Calculated Area: 71 sq. ft
Included: Yes

Heated: Yes
Finished: Yes
Enclosed: Yes
Contiguous: Yes
Permitted: Yes
Wet space: No
Addition: No
Conversion: No

140 High Coach Way, Madison, Madison County, Alabama,
United States, 35758

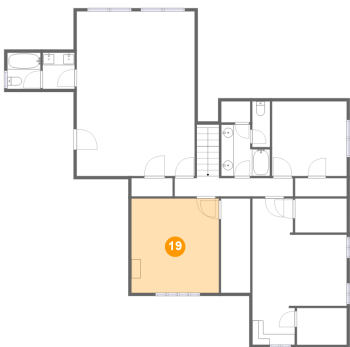
18 Floor 2 - Bath



Max Dimensions: 5'1" x 5'9"
Calculated Area: 30 sq. ft
Included: Yes

Heated: Yes
Finished: Yes
Enclosed: Yes
Contiguous: Yes
Permitted: Yes
Wet space: Yes
Addition: No
Conversion: No

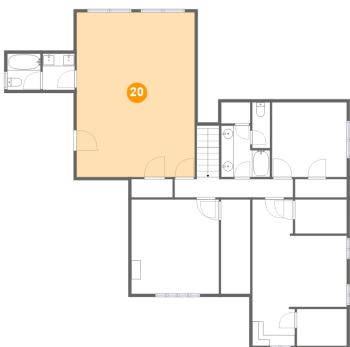
19 Floor 2 - Bedroom



Max Dimensions: 14'0" x 15'1"
Calculated Area: 210 sq. ft
Included: Yes

Heated: Yes
Finished: Yes
Enclosed: Yes
Contiguous: Yes
Permitted: Yes
Wet space: No
Addition: No
Conversion: No

20 Floor 2 - Bedroom

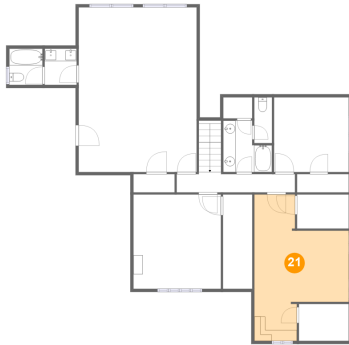


Max Dimensions: 18'10" x 26'4"
Calculated Area: 496 sq. ft
Included: Yes

Heated: Yes
Finished: Yes
Enclosed: Yes
Contiguous: Yes
Permitted: Yes
Wet space: No
Addition: No
Conversion: No

140 High Coach Way, Madison, Madison County, Alabama,
United States, 35758

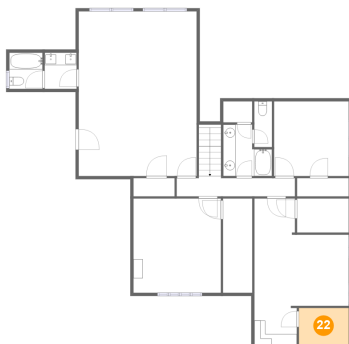
21 Floor 2 - Bedroom



Max Dimensions: 15'1" x 23'4"
Calculated Area: 251 sq. ft
Included: Yes

Heated: Yes
Finished: Yes
Enclosed: Yes
Contiguous: Yes
Permitted: Yes
Wet space: No
Addition: No
Conversion: No

22 Floor 2 - W.I.C.



Max Dimensions: 8'0" x 5'11"
Calculated Area: 47 sq. ft
Included: Yes

Heated: Yes
Finished: Yes
Enclosed: Yes
Contiguous: Yes
Permitted: Yes
Wet space: No
Addition: No
Conversion: No

23 Floor 2 - Hall

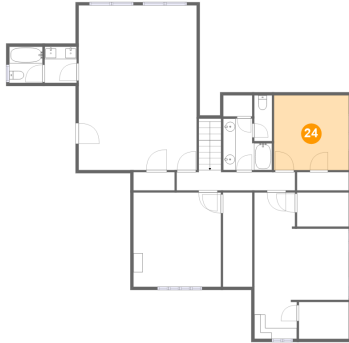


Max Dimensions: 18'11" x 3'3"
Calculated Area: 86 sq. ft
Included: Yes

Heated: Yes
Finished: Yes
Enclosed: Yes
Contiguous: Yes
Permitted: Yes
Wet space: No
Addition: No
Conversion: No

140 High Coach Way, Madison, Madison County, Alabama,
United States, 35758

24 Floor 2 - Bedroom



Max Dimensions: 11'11" x 11'11"
Calculated Area: 142 sq. ft
Included: Yes

Heated: Yes
Finished: Yes
Enclosed: Yes
Contiguous: Yes
Permitted: Yes
Wet space: No
Addition: No
Conversion: No

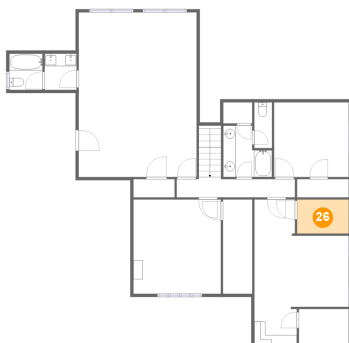
25 Floor 2 - Bath



Max Dimensions: 5'4" x 5'9"
Calculated Area: 31 sq. ft
Included: Yes

Heated: Yes
Finished: Yes
Enclosed: Yes
Contiguous: Yes
Permitted: Yes
Wet space: Yes
Addition: No
Conversion: No

26 Floor 2 - W.I.C.



Max Dimensions: 8'3" x 5'5"
Calculated Area: 45 sq. ft
Included: Yes

Heated: Yes
Finished: Yes
Enclosed: Yes
Contiguous: Yes
Permitted: Yes
Wet space: No
Addition: No
Conversion: No

140 High Coach Way, Madison, Madison County, Alabama,
United States, 35758

27 Floor 2 - Bath



Max Dimensions: 7'10" x 8'3"
Calculated Area: 52 sq. ft
Included: Yes

Heated: Yes
Finished: Yes
Enclosed: Yes
Contiguous: Yes
Permitted: Yes
Wet space: Yes
Addition: No
Conversion: No