



Home report


1385 Front Street, Northwest Manchester, Manchester,
Hillsborough County, New Hampshire, United States, 03102





Property summary


 **0** Garages


 **3** Bedrooms

 **2** Bathrooms

 **1** Half baths

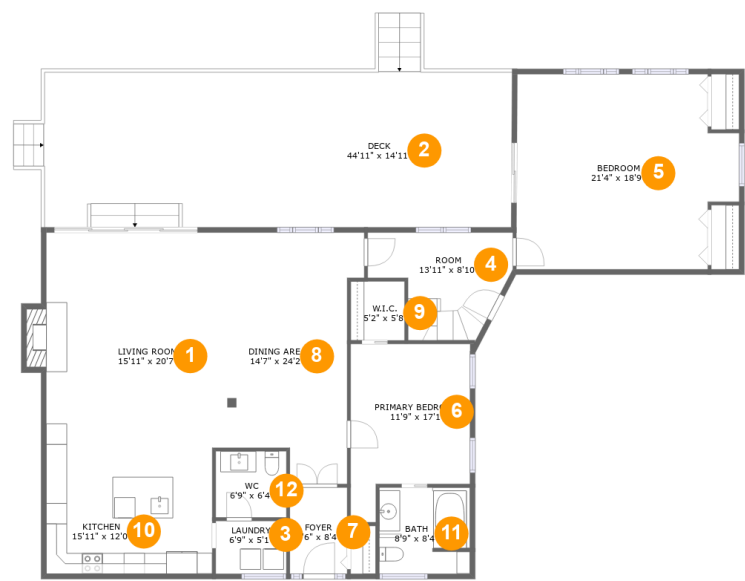
 **2** Floors

 **2,558** Gross living area sqft

 **3,481** Total sqft

Home report

1385 Front Street, Northwest Manchester, Manchester,
Hillsborough County, New Hampshire, United States, 03102



Room dimensions

Floor 1 Total sqft: 2594 Living area: 1880

#		Max Dimensions	sqft	Included
1	Living Room	15'11" x 20'7"	340 sq. ft	Yes
2	Deck	44'11" x 14'11"	701 sq. ft	No
3	Laundry	6'9" x 5'1"	34 sq. ft	Yes
4	Room	13'11" x 8'10"	109 sq. ft	Yes
5	Bedroom	21'4" x 18'9"	364 sq. ft	Yes
6	Primary Bedroom	11'9" x 17'1"	163 sq. ft	Yes
7	Foyer	5'6" x 8'4"	46 sq. ft	Yes
8	Dining Area	14'7" x 24'2"	294 sq. ft	Yes
9	W.I.C.	5'2" x 5'8"	29 sq. ft	Yes
10	Kitchen	15'11" x 12'0"	193 sq. ft	Yes
11	Bath	8'9" x 8'4"	71 sq. ft	Yes

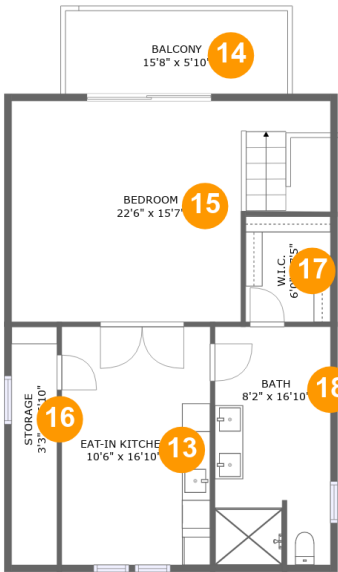
Home report

1385 Front Street, Northwest Manchester, Manchester,
Hillsborough County, New Hampshire, United States, 03102

#		Max Dimensions	sqft	Included
12	WC	6'9" x 6'4"	43 sq. ft	Yes

Home report

1385 Front Street, Northwest Manchester, Manchester,
Hillsborough County, New Hampshire, United States, 03102



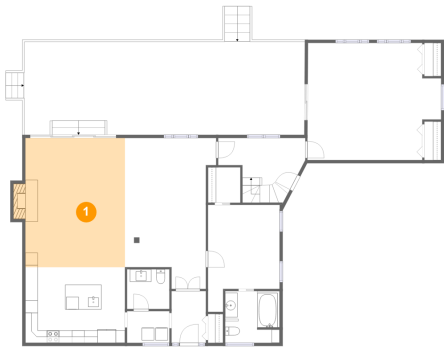
Room dimensions

Floor 2 Total sqft: 887 Living area: 678

#		Max Dimensions	sqft	Included
13	Eat-in Kitchen	10'6" x 16'10"	177 sq. ft	Yes
14	Balcony	15'8" x 5'10"	92 sq. ft	No
15	Bedroom	22'6" x 15'7"	302 sq. ft	Yes
16	Storage	3'3" x 16'10"	34 sq. ft	No
17	W.I.C.	6'0" x 7'5"	33 sq. ft	Yes
18	Bath	8'2" x 16'10"	109 sq. ft	Yes

1385 Front Street, Northwest Manchester, Manchester,
Hillsborough County, New Hampshire, United States, 03102

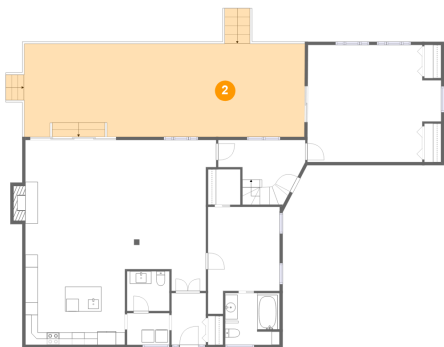
1 Floor 1 - Living Room



Max Dimensions: 15'11" x 20'7"
Calculated Area: 340 sq. ft
Included: Yes

Heated: Yes
Finished: Yes
Enclosed: Yes
Contiguous: Yes
Permitted: Yes
Wet space: No
Addition: No
Conversion: No

2 Floor 1 - Deck



Max Dimensions: 44'11" x 14'11"
Calculated Area: 701 sq. ft
Included: No

Heated: No
Finished: Yes
Enclosed: No
Contiguous: Yes
Permitted: Yes
Wet space: No
Addition: No
Conversion: No

1385 Front Street, Northwest Manchester, Manchester,
Hillsborough County, New Hampshire, United States, 03102

3 Floor 1 - Laundry



Max Dimensions: 6'9" x 5'1"
Calculated Area: 34 sq. ft
Included: Yes

Heated: Yes
Finished: Yes
Enclosed: Yes
Contiguous: Yes
Permitted: Yes
Wet space: No
Addition: No
Conversion: No

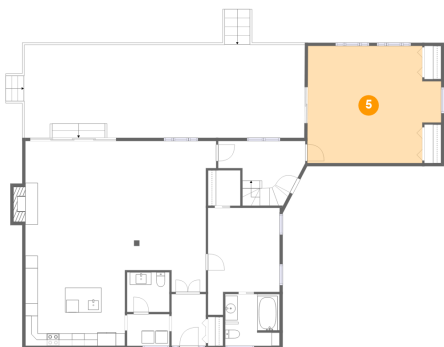
4 Floor 1 - Room



Max Dimensions: 13'11" x 8'10"
Calculated Area: 109 sq. ft
Included: Yes

Heated: Yes
Finished: Yes
Enclosed: Yes
Contiguous: Yes
Permitted: Yes
Wet space: No
Addition: No
Conversion: No

5 Floor 1 - Bedroom



Max Dimensions: 21'4" x 18'9"
Calculated Area: 364 sq. ft
Included: Yes

Heated: Yes
Finished: Yes
Enclosed: Yes
Contiguous: Yes
Permitted: Yes
Wet space: No
Addition: No
Conversion: No

1385 Front Street, Northwest Manchester, Manchester,
Hillsborough County, New Hampshire, United States, 03102

6 Floor 1 - Primary Bedroom



Max Dimensions: 11'9" x 17'1"
Calculated Area: 163 sq. ft
Included: Yes

Heated: Yes
Finished: Yes
Enclosed: Yes
Contiguous: Yes
Permitted: Yes
Wet space: No
Addition: No
Conversion: No

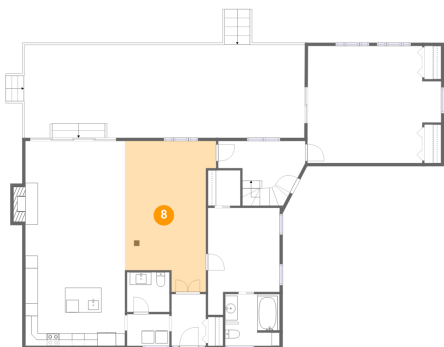
7 Floor 1 - Foyer



Max Dimensions: 5'6" x 8'4"
Calculated Area: 46 sq. ft
Included: Yes

Heated: Yes
Finished: Yes
Enclosed: Yes
Contiguous: Yes
Permitted: Yes
Wet space: No
Addition: No
Conversion: No

8 Floor 1 - Dining Area



Max Dimensions: 14'7" x 24'2"
Calculated Area: 294 sq. ft
Included: Yes

Heated: Yes
Finished: Yes
Enclosed: Yes
Contiguous: Yes
Permitted: Yes
Wet space: No
Addition: No
Conversion: No

Home report

1385 Front Street, Northwest Manchester, Manchester,
Hillsborough County, New Hampshire, United States, 03102

9 Floor 1 - W.I.C.



Max Dimensions: 5'2" x 5'8"
Calculated Area: 29 sq. ft
Included: Yes

Heated: Yes
Finished: Yes
Enclosed: Yes
Contiguous: Yes
Permitted: Yes
Wet space: No
Addition: No
Conversion: No

10 Floor 1 - Kitchen



Max Dimensions: 15'11" x 12'0"
Calculated Area: 193 sq. ft
Included: Yes

Heated: Yes
Finished: Yes
Enclosed: Yes
Contiguous: Yes
Permitted: Yes
Wet space: No
Addition: No
Conversion: No

11 Floor 1 - Bath



Max Dimensions: 8'9" x 8'4"
Calculated Area: 71 sq. ft
Included: Yes

Heated: Yes
Finished: Yes
Enclosed: Yes
Contiguous: Yes
Permitted: Yes
Wet space: Yes
Addition: No
Conversion: No

1385 Front Street, Northwest Manchester, Manchester,
Hillsborough County, New Hampshire, United States, 03102

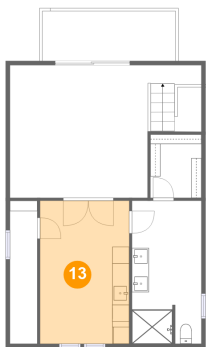
12 Floor 1 - WC



Max Dimensions: 6'9" x 6'4"
Calculated Area: 43 sq. ft
Included: Yes

Heated: Yes
Finished: Yes
Enclosed: Yes
Contiguous: Yes
Permitted: Yes
Wet space: Yes
Addition: No
Conversion: No

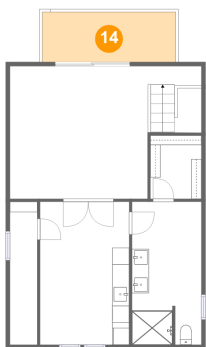
13 Floor 2 - Eat-in Kitchen



Max Dimensions: 10'6" x 16'10"
Calculated Area: 177 sq. ft
Included: Yes

Heated: Yes
Finished: Yes
Enclosed: Yes
Contiguous: Yes
Permitted: Yes
Wet space: No
Addition: No
Conversion: No

14 Floor 2 - Balcony

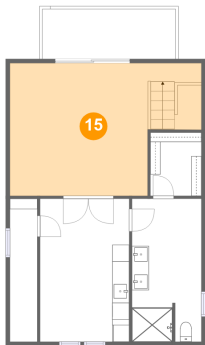


Max Dimensions: 15'8" x 5'10"
Calculated Area: 92 sq. ft
Included: No

Heated: No
Finished: Yes
Enclosed: No
Contiguous: Yes
Permitted: Yes
Wet space: No
Addition: No
Conversion: No

1385 Front Street, Northwest Manchester, Manchester,
Hillsborough County, New Hampshire, United States, 03102

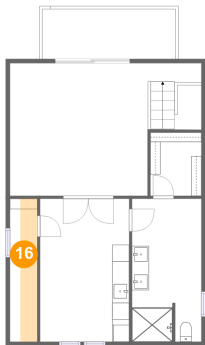
15 Floor 2 - Bedroom



Max Dimensions: 22'6" x 15'7"
Calculated Area: 302 sq. ft
Included: Yes

Heated: Yes
Finished: Yes
Enclosed: Yes
Contiguous: Yes
Permitted: Yes
Wet space: No
Addition: No
Conversion: No

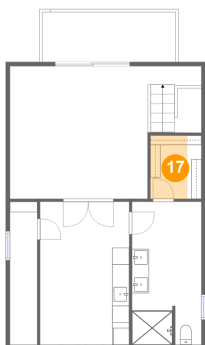
16 Floor 2 - Storage



Max Dimensions: 3'3" x 16'10"
Calculated Area: 34 sq. ft
Included: No

Heated: No
Finished: No
Enclosed: No
Contiguous: No
Permitted: Yes
Wet space: No
Addition: No
Conversion: No

17 Floor 2 - W.I.C.

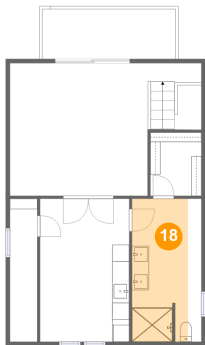


Max Dimensions: 6'0" x 7'5"
Calculated Area: 33 sq. ft
Included: Yes

Heated: Yes
Finished: Yes
Enclosed: Yes
Contiguous: Yes
Permitted: Yes
Wet space: No
Addition: No
Conversion: No

1385 Front Street, Northwest Manchester, Manchester,
Hillsborough County, New Hampshire, United States, 03102

18 Floor 2 - Bath



Max Dimensions: 8'2" x
16'10"
Calculated Area: 109 sq. ft
Included: Yes

Heated: Yes
Finished: Yes
Enclosed: Yes
Contiguous:
Yes
Permitted: Yes
Wet space: Yes
Addition: No
Conversion: No