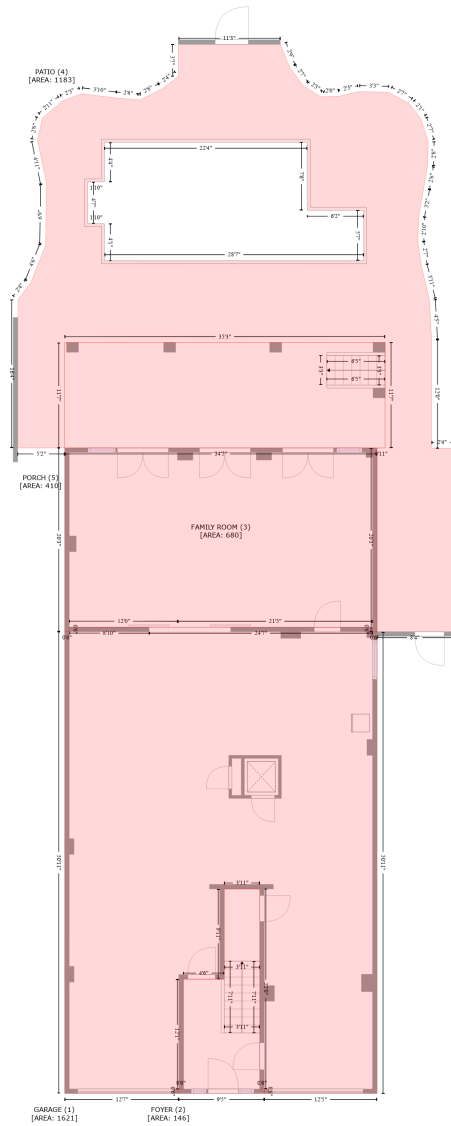


# 1102 Beach Trail, Indian Rocks Beach, Pinellas County, Florida, United States, 33785

Gross Living Area: 2447 sq. ft



Space	Area (sq. ft)	Calculation
GARAGE (Non-living area)	1621	Coordinate Polygon Area Algorithm using inches $-((571.7 + 677.2) * (383 - 383.1) + (677.2 + 972.4) * (383.1 - 383.1) + (972.4 + 972.4) * (383.1 - 389.1) + (972.4 + 978.4) * (389.1 - 389.1) + (978.4 + 978.4) * (389.1 - 999.7) + (978.4 + 829.5) * (999.7 - 999.7) + (829.5 + 829.5) * (999.7 - 993.7) + (829.5 + 823.5) * (993.7 - 993.7) + (823.5 + 823.5) * (993.7 - 729.2) + (823.5 + 776.4) * (729.2 - 729.2) + (776.4 + 776.4) * (729.2 - 848.4) + (776.4 + 722.4) * (848.4 - 848.4) + (722.4 + 722.4) * (848.4 - 993.7) + (722.4 + 716.4) * (993.7 - 993.7) + (716.4 + 716.4) * (993.7 - 999.7) + (716.4 + 565.7) * (999.7 - 999.7) + (565.7 + 565.7) * (999.7 - 389) + (565.7 + 571.7) * (389 - 389) + (571.7 + 571.7) * (389 - 383)) * 0.5 * 0.00694$

# 1102 Beach Trail, Indian Rocks Beach, Pinellas County, Florida, United States, 33785

Gross Living Area: 2447 sq. ft

Space	Area (sq. ft)	Calculation <small>Coordinate Polygon Area Algorithm using inches</small>
FOYER (Non-living area)	146	$-\left((823.5 + 823.5) * (729.2 - 993.7) + (823.5 + 829.5) * (993.7 - 993.7) + (829.5 + 829.5) * (993.7 - 999.7) + (829.5 + 716.4) * (999.7 - 999.7) + (716.4 + 716.4) * (999.7 - 993.7) + (716.4 + 722.4) * (993.7 - 993.7) + (722.4 + 722.4) * (993.7 - 848.4) + (722.4 + 776.4) * (848.4 - 848.4) + (776.4 + 776.4) * (848.4 - 729.2) + (776.4 + 823.5) * (729.2 - 729.2)\right) * 0.5 * 0.00694$
FAMILY ROOM (Non-living area)	680	$-\left((978.4 + 978.4) * (146 - 389.1) + (978.4 + 972.4) * (389.1 - 389.1) + (972.4 + 972.4) * (389.1 - 383.1) + (972.4 + 715.4) * (383.1 - 383.1) + (715.4 + 571.7) * (383.1 - 383) + (571.7 + 571.7) * (383 - 389) + (571.7 + 565.7) * (389 - 389) + (565.7 + 565.7) * (389 - 146) + (565.7 + 978.4) * (146 - 146)\right) * 0.5 * 0.00694$
PATIO (Non-living area)	1183	$-\left((850.6 + 863) * (-387.9 - -357.2) + (863 + 881.6) * (-357.2 - -332.4) + (881.6 + 904.4) * (-332.4 - -318.4) + (904.4 + 928.5) * (-318.4 - -319.2) + (928.5 + 954.8) * (-319.2 - -325.5) + (954.8 + 993.6) * (-325.5 - -324.4) + (993.6 + 1021.1) * (-324.4 - -309.4) + (1021.1 + 1036.4) * (-309.4 - -289.2) + (1036.4 + 1046) * (-289.2 - -259.8) + (1046 + 1045.1) * (-259.8 - -227.5) + (1045.1 + 1040.1) * (-227.5 - -197.6) + (1040.1 + 1033.4) * (-197.6 - -160.5) + (1033.4 + 1032.3) * (-160.5 - -126.7) + (1032.3 + 1036.8) * (-126.7 - -95.9) + (1036.8 + 1047.6) * (-95.9 - -50.4) + (1047.6 + 1050.4) * (-50.4 - 2.5) + (1050.4 + 1050.4) * (2.5 - 146.5) + (1050.4 + 1077.9) * (146.5 - 146.5) + (1077.9 + 1077.9) * (146.5 - 389.1) + (1077.9 + 978.4) * (389.1 - 389.1) + (978.4 + 978.4) * (389.1 - 146) + (978.4 + 989) * (146 - 146) + (989 + 989) * (146 - 6.5) + (989 + 565.7) * (6.5 - 6.6) + (565.7 + 565.7) * (6.6 - 146) + (565.7 + 503.6) * (146 - 146) + (503.6 + 503.6) * (146 - -50) + (503.6 + 520.7) * (-50 - -72.4) + (520.7 + 540.5) * (-72.4 - -122.2) + (540.5 + 541.8) * (-122.2 - -203.3) + (541.8 + 529.8) * (-203.3 - -260.8) + (529.8 + 536.2) * (-260.8 - -290.2) + (536.2 + 562.4) * (-290.2 - -312.9) + (562.4 + 587.8) * (-312.9 - -322.5) + (587.8 + 633) * (-322.5 - -316.9) + (633 + 665.1) * (-316.9 - -314.4) + (665.1 + 693.5) * (-314.4 - -328.6) + (693.5 + 716.1) * (-328.6 - -345.3) + (716.1 + 715.9) * (-345.3 - -387.9) + (715.9 + 850.6) * (-387.9 - -387.9) * 0.5 * 0.00694 + -\left((886.3 + 618.2) * (-258.3 - -258.3) + (618.2 + 618.2) * (-258.3 - -206) + (618.2 + 595.9) * (-206 - -206) + (595.9 + 595.9) * (-206 - -150.8) + (595.9 + 618.2) * (-150.8 - -150.8) + (618.2 + 618.2) * (-150.8 - -101.8) + (618.2 + 960.7) * (-101.8 - -101.8) + (960.7 + 960.7) * (-101.8 - -168.4) + (960.7 + 886.3) * (-168.4 - -168.4) + (886.3 + 886.3) * (-168.4 - -258.3)\right) * 0.5 * 0.00694$
PORCH (Non-living area)	410	$-\left((989 + 989) * (6.5 - 146) + (989 + 565.7) * (146 - 146) + (565.7 + 565.7) * (146 - 6.6) + (565.7 + 989) * (6.6 - 6.5)\right) * 0.5 * 0.00694$

# 1102 Beach Trail, Indian Rocks Beach, Pinellas County, Florida, United States, 33785

Gross Living Area: 2447 sq. ft



Space	Area (sq. ft)	Calculation
FLOOR 2 (Living area)	2447	$-(978.4 + 978.4) * (146 - 999.7) + (978.4 + 565.7) * (999.7 - 999.7) + (565.7 + 565.7) * (999.7 - 146) + (565.7 + 978.4) * (146 - 146) * 0.5 * 0.00694$
BALCONY (Non-living area)	244	$-(974.4 + 974.4) * (999.7 - 1082.5) + (974.4 + 840.6) * (1082.5 - 1082.5) + (840.6 + 806.3) * (1082.5 - 1101.5) + (806.3 + 764.2) * (1101.5 - 1104.5) + (764.2 + 742.4) * (1104.5 - 1097.3) + (742.4 + 727.5) * (1097.3 - 1082.5) + (727.5 + 569.7) * (1082.5 - 1082.5) + (569.7 + 569.7) * (1082.5 - 999.7) + (569.7 + 974.4) * (999.7 - 999.7) * 0.5 * 0.00694$

# 1102 Beach Trail, Indian Rocks Beach, Pinellas County, Florida, United States, 33785

Gross Living Area: 2447 sq. ft

Space	Area (sq. ft)	Calculation <small>Coordinate Polygon Area Algorithm using inches</small>
BALCONY (Non-living area)	379	$-\left((852 + 852) * (5.5 - 23.7) + (852 + 974.4) * (23.7 - 23.7) + (974.4 + 974.4) * (23.7 - 146) + (974.4 + 569.7) * (146 - 146) + (569.7 + 569.7) * (146 - 5.5) + (569.7 + 852) * (5.5 - 5.5)\right) * 0.5 * 0.00694$