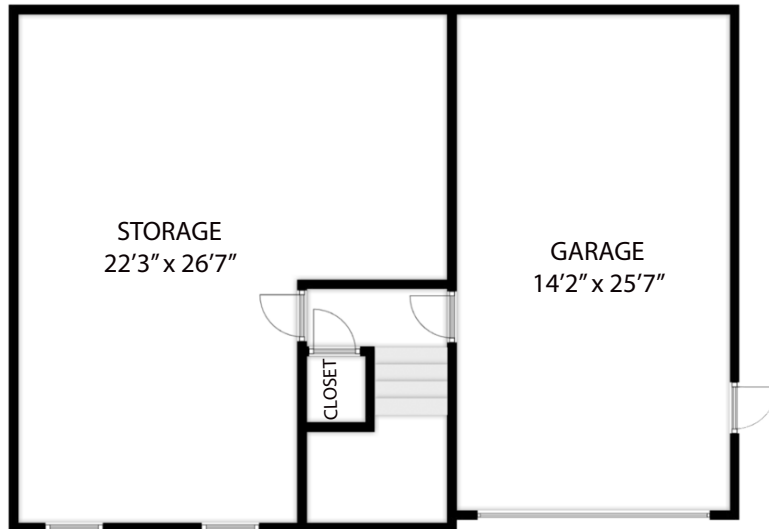
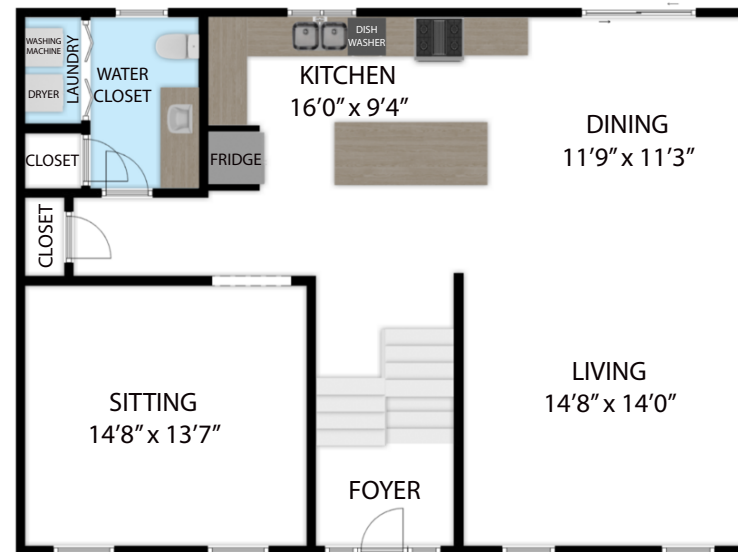


UPPER LEVEL
974 SQ.FT



LOWER LEVEL
642 SQ.FT

GARAGE
411 SQ.FT



MAIN LEVEL
1,098 SQ.FT

4 Driftwood Lane, North, Billerica 01862

TOTAL APPROX. FLOOR AREA 2,714 SQ.FT

Floor plans and measurements provided are approximate and may not be 100% accurate. Floor plans are for advertising usage only and are not suitable for architecture or construction. We provide cost-effective services for property owners, managers, facility managers, real estate professionals, architects, space planners and interior designers, or any company which would like to verify their lease space size. Clients are responsible for verification and home values should not be set solely based on the floor plans

