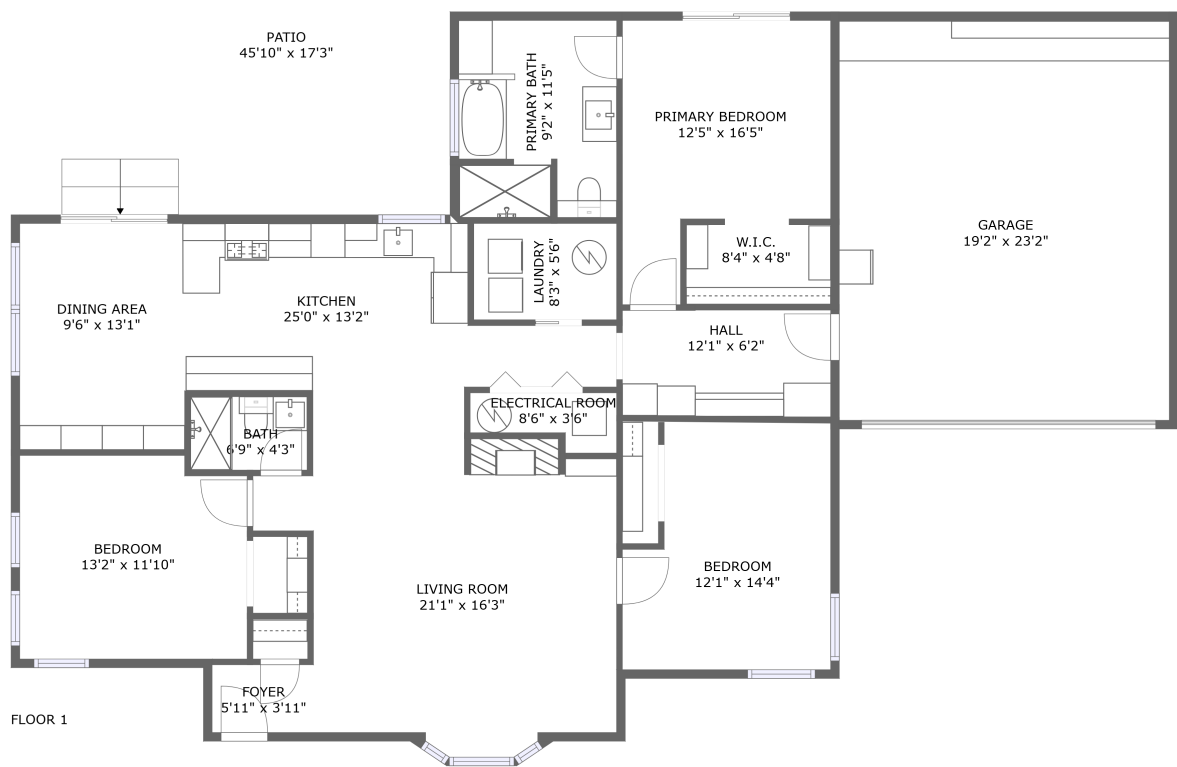



Home report


1224 S Mt Prospect Rd,Des Plaines,IL,US



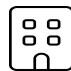
Property summary


 **1** Garages


 **3** Bedrooms

 **2** Bathrooms

 **0** Half baths

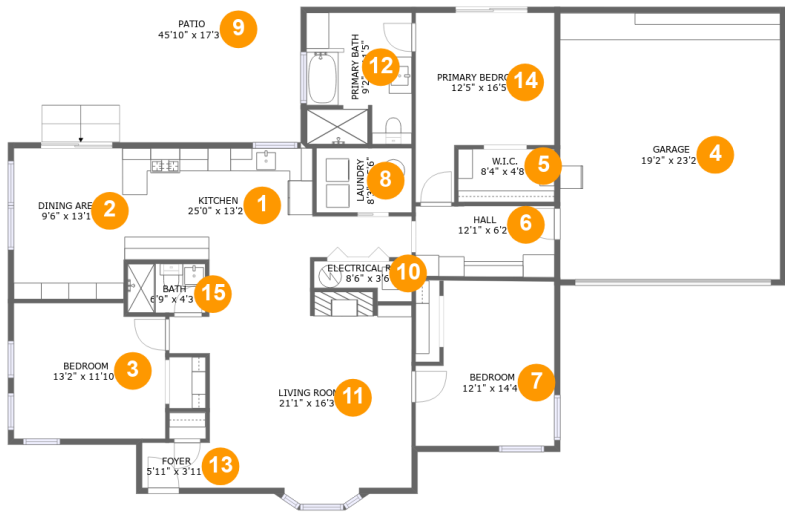
 **1** Floors

 **1,616** Gross living area sqft

 **2,674** Total sqft

Home report

1224 S Mt Prospect Rd,Des Plaines,IL,US



Room dimensions

Floor 1

Total sqft: 2674    Living area: 1616

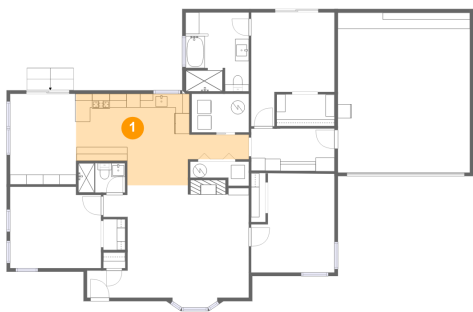
#		Dimensions	sqft	Counted as living area
1	Kitchen	25'0" x 13'2"	221 sq. ft	Yes
2	Dining Area	9'6" x 13'1"	126 sq. ft	Yes
3	Bedroom	13'2" x 11'10"	151 sq. ft	Yes
4	Garage	19'2" x 23'2"	444 sq. ft	No
5	W.I.C.	8'4" x 4'8"	39 sq. ft	Yes
6	Hall	12'1" x 6'2"	74 sq. ft	Yes
7	Bedroom	12'1" x 14'4"	156 sq. ft	Yes
8	Laundry	8'3" x 5'6"	46 sq. ft	Yes
9	Patio	45'10" x 17'3"	551 sq. ft	No
10	Electrical Room	8'6" x 3'6"	23 sq. ft	No
11	Living Room	21'1" x 16'3"	299 sq. ft	Yes

Home report

1224 S Mt Prospect Rd,Des Plaines,IL,US

#		Dimensions	sqft	Counted as living area
12	Primary Bath	9'2" x 11'5"	103 sq. ft	Yes
13	Foyer	5'11" x 3'11"	23 sq. ft	Yes
14	Primary Bedroom	12'5" x 16'5"	157 sq. ft	Yes
15	Bath	6'9" x 4'3"	29 sq. ft	Yes

1 Floor 1 - Kitchen



Dimensions: 25'0" x 13'2"  
Area: 221 sq. ft  
Counted as living area: Yes

Heated: Yes  
Finished: Yes  
Enclosed: Yes  
Contiguous: Yes  
Permitted: Yes  
Wet space: No  
Addition: No  
Conversion: No

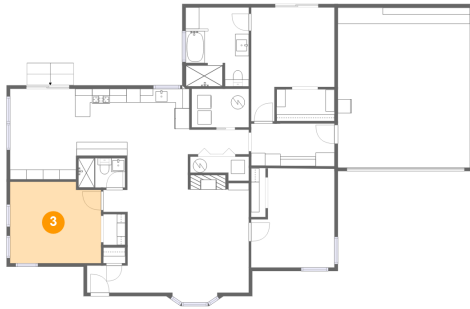
2 Floor 1 - Dining Area



Dimensions: 9'6" x 13'1"  
Area: 126 sq. ft  
Counted as living area: Yes

Heated: Yes  
Finished: Yes  
Enclosed: Yes  
Contiguous: Yes  
Permitted: Yes  
Wet space: No  
Addition: No  
Conversion: No

### 3 Floor 1 - Bedroom



Dimensions: 13'2" x 11'10"  
Area: 151 sq. ft  
Counted as living area: Yes

Heated: Yes  
Finished: Yes  
Enclosed: Yes  
Contiguous: Yes  
Permitted: Yes  
Wet space: No  
Addition: No  
Conversion: No

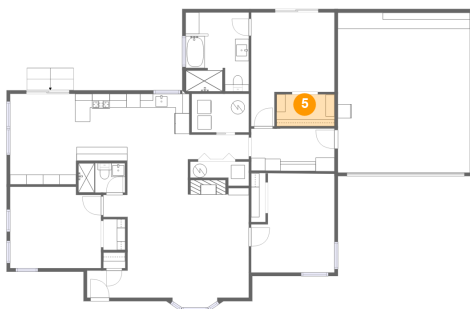
### 4 Floor 1 - Garage



Dimensions: 19'2" x 23'2"  
Area: 444 sq. ft  
Counted as living area: No

Heated: No  
Finished: No  
Enclosed: Yes  
Contiguous: Yes  
Permitted: Yes  
Wet space: No  
Addition: No  
Conversion: No

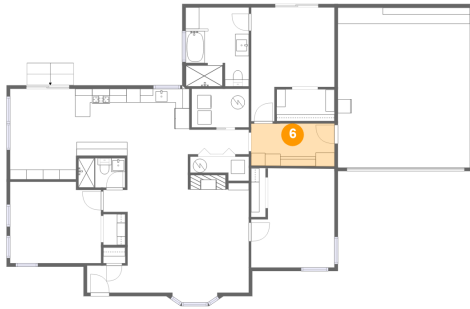
### 5 Floor 1 - W.I.C.



Dimensions: 8'4" x 4'8"  
Area: 39 sq. ft  
Counted as living area: Yes

Heated: Yes  
Finished: Yes  
Enclosed: Yes  
Contiguous: Yes  
Permitted: Yes  
Wet space: No  
Addition: No  
Conversion: No

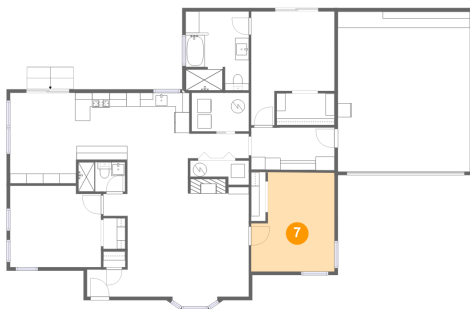
## 6 Floor 1 - Hall



Dimensions: 12'1" x 6'2"  
Area: 74 sq. ft  
Counted as living area: Yes

Heated: Yes  
Finished: Yes  
Enclosed: Yes  
Contiguous: Yes  
Permitted: Yes  
Wet space: No  
Addition: No  
Conversion: No

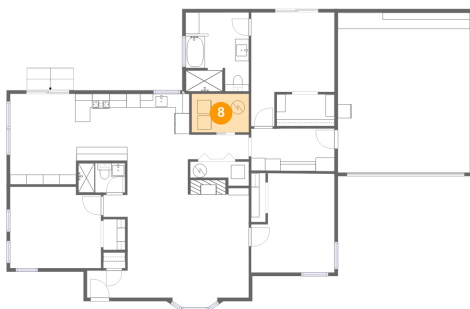
## 7 Floor 1 - Bedroom



Dimensions: 12'1" x 14'4"  
Area: 156 sq. ft  
Counted as living area: Yes

Heated: Yes  
Finished: Yes  
Enclosed: Yes  
Contiguous: Yes  
Permitted: Yes  
Wet space: No  
Addition: No  
Conversion: No

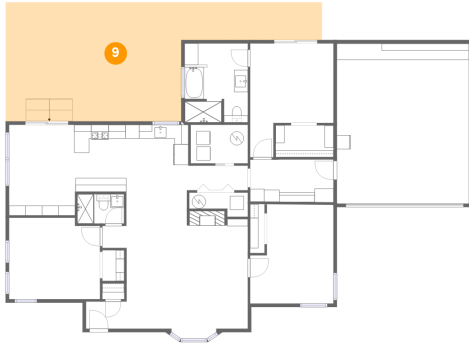
## 8 Floor 1 - Laundry



Dimensions: 8'3" x 5'6"  
Area: 46 sq. ft  
Counted as living area: Yes

Heated: Yes  
Finished: Yes  
Enclosed: Yes  
Contiguous: Yes  
Permitted: Yes  
Wet space: No  
Addition: No  
Conversion: No

## 9 Floor 1 - Patio



Dimensions: 45'10" x 17'3"  
Area: 551 sq. ft  
Counted as living area: No

Heated: No  
Finished: Yes  
Enclosed: No  
Contiguous: Yes  
Permitted: Yes  
Wet space: No  
Addition: No  
Conversion: No

## 10 Floor 1 - Electrical Room



Dimensions: 8'6" x 3'6"  
Area: 23 sq. ft  
Counted as living area: No

Heated: No  
Finished: No  
Enclosed: Yes  
Contiguous: Yes  
Permitted: Yes  
Wet space: No  
Addition: No  
Conversion: No

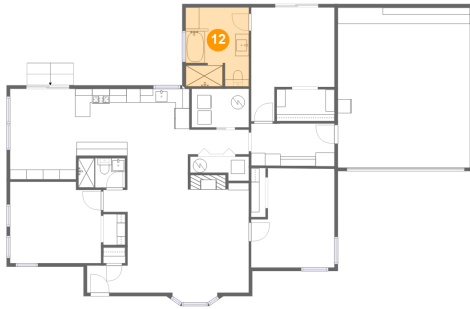
## 11 Floor 1 - Living Room



Dimensions: 21'1" x 16'3"  
Area: 299 sq. ft  
Counted as living area: Yes

Heated: Yes  
Finished: Yes  
Enclosed: Yes  
Contiguous: Yes  
Permitted: Yes  
Wet space: No  
Addition: No  
Conversion: No

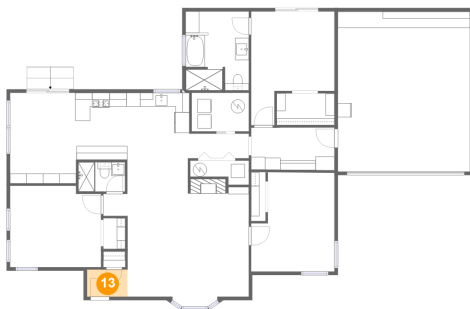
## 12 Floor 1 - Primary Bath



Dimensions: 9'2" x 11'5"  
Area: 103 sq. ft  
Counted as living area: Yes

Heated: Yes  
Finished: Yes  
Enclosed: Yes  
Contiguous: Yes  
Permitted: Yes  
Wet space: Yes  
Addition: No  
Conversion: No

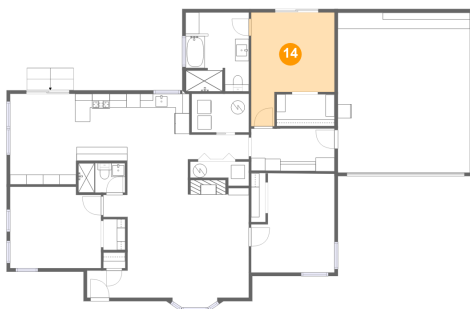
## 13 Floor 1 - Foyer



Dimensions: 5'11" x 3'11"  
Area: 23 sq. ft  
Counted as living area: Yes

Heated: Yes  
Finished: Yes  
Enclosed: Yes  
Contiguous: Yes  
Permitted: Yes  
Wet space: No  
Addition: No  
Conversion: No

## 14 Floor 1 - Primary Bedroom

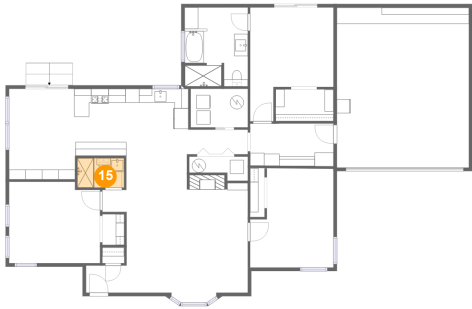


Dimensions: 12'5" x 16'5"  
Area: 157 sq. ft  
Counted as living area: Yes

Heated: Yes  
Finished: Yes  
Enclosed: Yes  
Contiguous: Yes  
Permitted: Yes  
Wet space: No  
Addition: No  
Conversion: No



15 Floor 1 - Bath



Dimensions: 6'9" x 4'3"  
Area: 29 sq. ft  
Counted as living area: Yes

Heated: Yes  
Finished: Yes  
Enclosed: Yes  
Contiguous: Yes  
Permitted: Yes  
Wet space: Yes  
Addition: No  
Conversion: No