

Home data report

3655 Burnbrae Drive, Erindale, Mississauga, Peel County,  
Ontario, Canada, L5C 2R6




Total Area: 1485 sq. ft

Basement 1: 0 sq. ft, 1st Floor: 0 sq. ft, 2nd Floor: 370 sq. ft, 3rd Floor: 494 sq. ft, 4th Floor: 621 sq. ft

Excluded: Utility 231 sq. ft, Storage 107 sq. ft, Room 499 sq. ft, Garage 414 sq. ft, Porch 44 sq. ft, Fireplace 12 sq. ft

Property summary

 5 Floors

 3 Bedrooms

 1 Bathrooms

Home data report

**3655 Burnbrae Drive, Erindale, Mississauga, Peel County,  
Ontario, Canada, L5C 2R6**

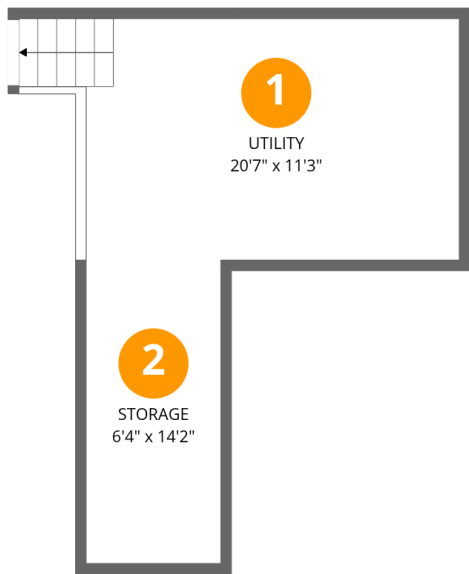


**1**  
Half baths



**1**  
Garages

3655 Burnbrae Drive, Erindale, Mississauga, Peel County,  
Ontario, Canada, L5C 2R6



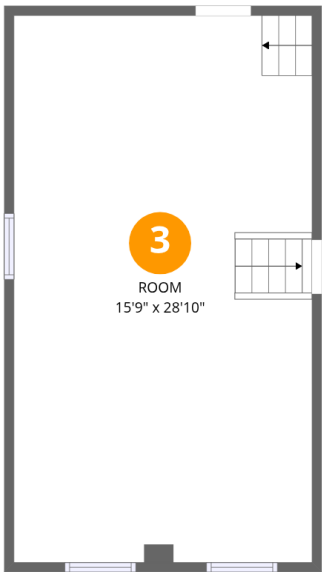
Room dimensions

Floor 1 Below grade Total:0sqft   Excluded: 338sqft

#		Dimensions	sqft	Counted as living area
1	Utility	20'7" x 11'3"	232 sq. ft	No
2	Storage	6'4" x 14'2"	89 sq. ft	No

Home data report

3655 Burnbrae Drive, Erindale, Mississauga, Peel County,  
Ontario, Canada, L5C 2R6



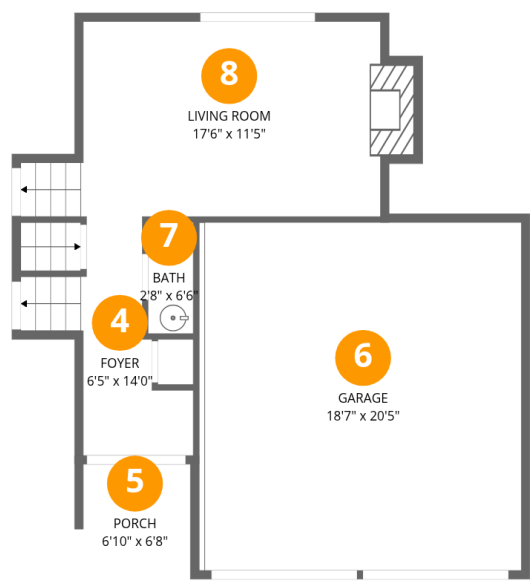
Room dimensions

Floor 2 Total:0sqft   Excluded: 499sqft

#		Dimensions	sqft	Counted as living area
3	Room	15'9" x 28'10"	453 sq. ft	No

Home data report

3655 Burnbrae Drive, Erindale, Mississauga, Peel County,  
Ontario, Canada, L5C 2R6



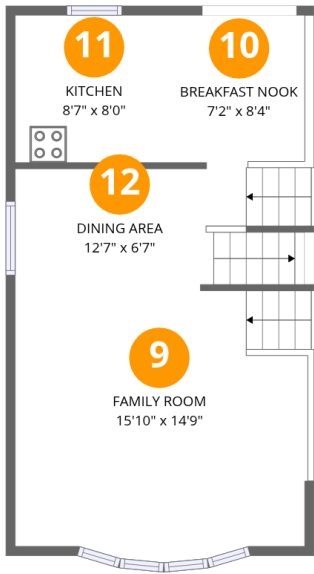
Room dimensions

Floor 3 Total:370sqft    Excluded: 470sqft

#		Dimensions	sqft	Counted as living area
4	Foyer	6'5" x 14'0"	90 sq. ft	Yes
5	Porch	6'10" x 6'8"	46 sq. ft	No
6	Garage	18'7" x 20'5"	379 sq. ft	No
7	Bath	2'8" x 6'6"	17 sq. ft	Yes
8	Living Room	17'6" x 11'5"	200 sq. ft	Yes

Home data report

3655 Burnbrae Drive, Erindale, Mississauga, Peel County,  
Ontario, Canada, L5C 2R6



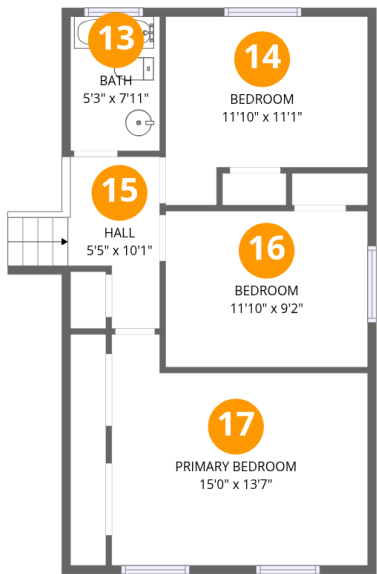
Room dimensions

Floor 4 Total:494sqft    Excluded: 0sqft

#		Dimensions	sqft	Counted as living area
9	Family Room	15'10" x 14'9"	234 sq. ft	Yes
10	Breakfast Nook	7'2" x 8'4"	60 sq. ft	Yes
11	Kitchen	8'7" x 8'0"	69 sq. ft	Yes
12	Dining Area	12'7" x 6'7"	83 sq. ft	Yes

Home data report

3655 Burnbrae Drive, Erindale, Mississauga, Peel County,  
Ontario, Canada, L5C 2R6

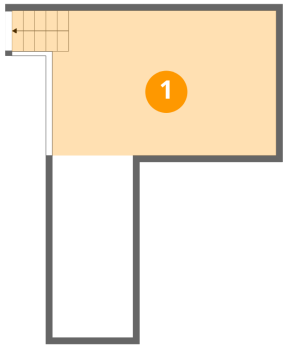


Room dimensions

Floor 5 Total:621sqft Excluded: 0sqft

#		Dimensions	sqft	Counted as living area
13	Bath	5'3" x 7'11"	41 sq. ft	Yes
14	Bedroom	11'10" x 11'1"	131 sq. ft	Yes
15	Hall	5'5" x 10'1"	54 sq. ft	Yes
16	Bedroom	11'10" x 9'2"	109 sq. ft	Yes
17	Primary Bedroom	15'0" x 13'7"	204 sq. ft	Yes

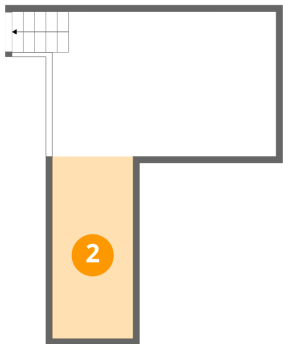
1 Floor 1 - Utility



Dimensions: 20'7" x 11'3"  
Area: 232 sq. ft  
Counted as living area: No

Heated: Yes  
Finished: No  
Enclosed: Yes  
Contiguous: Yes  
Permitted: Yes  
Wet space: No  
Addition: No  
Conversion: No

2 Floor 1 - Storage

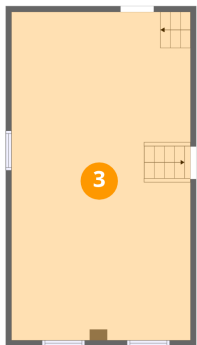


Dimensions: 6'4" x 14'2"  
Area: 89 sq. ft  
Counted as living area: No

Heated: No  
Finished: No  
Enclosed: No  
Contiguous: Yes  
Permitted: Yes  
Wet space: No  
Addition: No  
Conversion: No



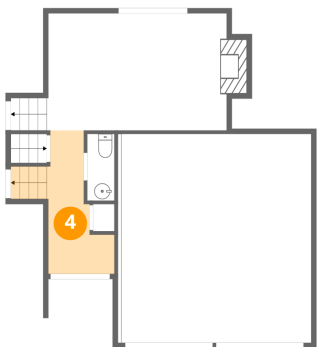
3 Floor 2 - Room



Dimensions: 15'9" x 28'10"  
Area: 453 sq. ft  
Counted as living area: No

Heated: Yes  
Finished: No  
Enclosed: Yes  
Contiguous: Yes  
Permitted: Yes  
Wet space: No  
Addition: No  
Conversion: No

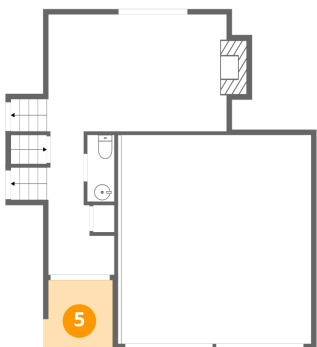
4 Floor 3 - Foyer



Dimensions: 6'5" x 14'0"  
Area: 90 sq. ft  
Counted as living area: Yes

Heated: Yes  
Finished: Yes  
Enclosed: Yes  
Contiguous: Yes  
Permitted: Yes  
Wet space: No  
Addition: No  
Conversion: No

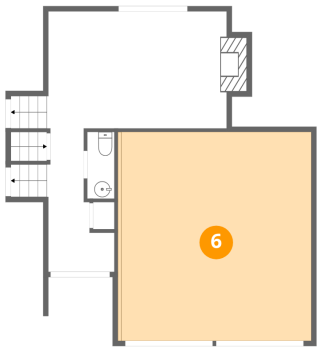
5 Floor 3 - Porch



Dimensions: 6'10" x 6'8"  
Area: 46 sq. ft  
Counted as living area: No

Heated: No  
Finished: No  
Enclosed: No  
Contiguous: Yes  
Permitted: Yes  
Wet space: No  
Addition: No  
Conversion: No

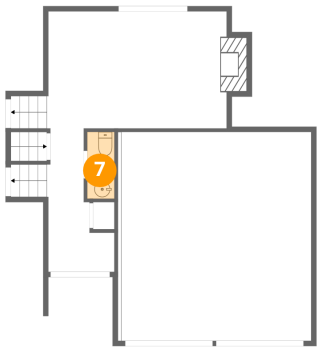
6 Floor 3 - Garage



Dimensions: 18'7" x 20'5"  
Area: 379 sq. ft  
Counted as living area: No

Heated: No  
Finished: No  
Enclosed: Yes  
Contiguous: Yes  
Permitted: Yes  
Wet space: No  
Addition: No  
Conversion: No

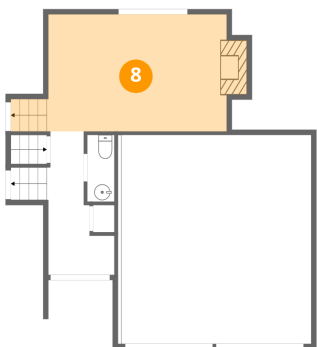
7 Floor 3 - Bath



Dimensions: 2'8" x 6'6"  
Area: 17 sq. ft  
Counted as living area: Yes

Heated: Yes  
Finished: Yes  
Enclosed: Yes  
Contiguous: Yes  
Permitted: Yes  
Wet space: Yes  
Addition: No  
Conversion: No

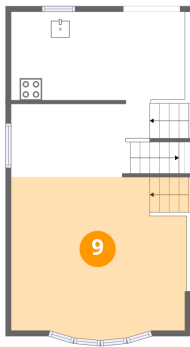
8 Floor 3 - Living Room



Dimensions: 17'6" x 11'5"  
Area: 200 sq. ft  
Counted as living area: Yes

Heated: Yes  
Finished: Yes  
Enclosed: Yes  
Contiguous: Yes  
Permitted: Yes  
Wet space: No  
Addition: No  
Conversion: No

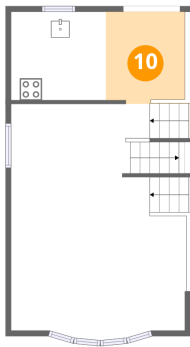
9 Floor 4 - Family Room



Dimensions: 15'10" x 14'9"  
Area: 234 sq. ft  
Counted as living area: Yes

Heated: Yes  
Finished: Yes  
Enclosed: Yes  
Contiguous: Yes  
Permitted: Yes  
Wet space: No  
Addition: No  
Conversion: No

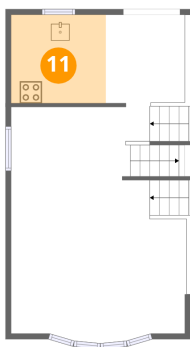
10 Floor 4 - Breakfast Nook



Dimensions: 7'2" x 8'4"  
Area: 60 sq. ft  
Counted as living area: Yes

Heated: Yes  
Finished: Yes  
Enclosed: Yes  
Contiguous: Yes  
Permitted: Yes  
Wet space: No  
Addition: No  
Conversion: No

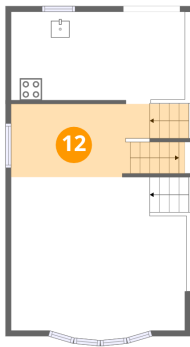
11 Floor 4 - Kitchen



Dimensions: 8'7" x 8'0"  
Area: 69 sq. ft  
Counted as living area: Yes

Heated: Yes  
Finished: Yes  
Enclosed: Yes  
Contiguous: Yes  
Permitted: Yes  
Wet space: No  
Addition: No  
Conversion: No

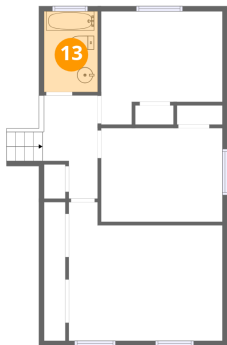
12 Floor 4 - Dining Area



Dimensions: 12'7" x 6'7"  
Area: 83 sq. ft  
Counted as living area: Yes

Heated: Yes  
Finished: Yes  
Enclosed: Yes  
Contiguous: Yes  
Permitted: Yes  
Wet space: No  
Addition: No  
Conversion: No

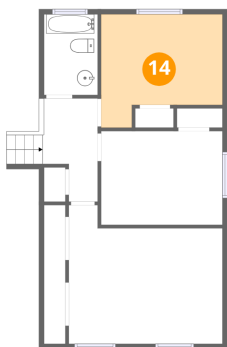
13 Floor 5 - Bath



Dimensions: 5'3" x 7'11"  
Area: 41 sq. ft  
Counted as living area: Yes

Heated: Yes  
Finished: Yes  
Enclosed: Yes  
Contiguous: Yes  
Permitted: Yes  
Wet space: Yes  
Addition: No  
Conversion: No

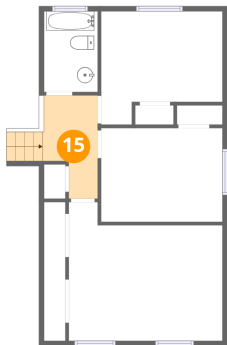
14 Floor 5 - Bedroom



Dimensions: 11'10" x 11'1"  
Area: 131 sq. ft  
Counted as living area: Yes

Heated: Yes  
Finished: Yes  
Enclosed: Yes  
Contiguous: Yes  
Permitted: Yes  
Wet space: No  
Addition: No  
Conversion: No

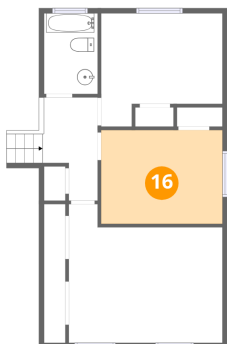
15 Floor 5 - Hall



Dimensions: 5'5" x 10'1"  
Area: 54 sq. ft  
Counted as living area: Yes

Heated: Yes  
Finished: Yes  
Enclosed: Yes  
Contiguous: Yes  
Permitted: Yes  
Wet space: No  
Addition: No  
Conversion: No

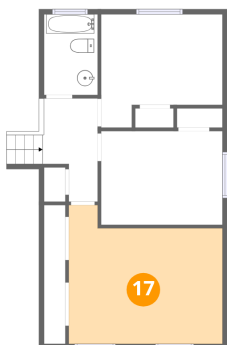
16 Floor 5 - Bedroom



Dimensions: 11'10" x 9'2"  
Area: 109 sq. ft  
Counted as living area: Yes

Heated: Yes  
Finished: Yes  
Enclosed: Yes  
Contiguous: Yes  
Permitted: Yes  
Wet space: No  
Addition: No  
Conversion: No

17 Floor 5 - Primary Bedroom



Dimensions: 15'0" x 13'7"  
Area: 204 sq. ft  
Counted as living area: Yes

Heated: Yes  
Finished: Yes  
Enclosed: Yes  
Contiguous: Yes  
Permitted: Yes  
Wet space: No  
Addition: No  
Conversion: No