



Home report


3643 Larson Lane, Melody Acres, Cave Spring, Roanoke,  
Roanoke County, Virginia, United States, 24018




Property summary

 **1** Garages

 **3** Bedrooms

 **2** Bathrooms

 **1** Half baths

 **1** Floors

 **2,000** Gross living area sqft

 **3,404** Total sqft

Home report

3643 Larson Lane, Melody Acres, Cave Spring, Roanoke,  
Roanoke County, Virginia, United States, 24018



Room dimensions

Floor 1 Total sqft: 3404    Living area: 2000

#		Max Dimensions	sqft	Included
1	Bedroom	14'11" x 10'10"	162 sq. ft	Yes
2	Bedroom	11'0" x 10'10"	119 sq. ft	Yes
3	Patio	19'0" x 16'4"	311 sq. ft	No
4	Hall	21'1" x 3'8"	79 sq. ft	Yes
5	Kitchen	16'4" x 14'0"	221 sq. ft	Yes
6	Office	9'4" x 12'8"	118 sq. ft	Yes
7	Dining Area	10'4" x 11'9"	121 sq. ft	Yes
8	Bath	7'1" x 7'1"	50 sq. ft	Yes
9	Living Room	19'11" x 12'8"	242 sq. ft	Yes
10	Deck	12'0" x 13'2"	158 sq. ft	No
11	Porch	34'3" x 5'0"	172 sq. ft	No

## Home report

**3643 Larson Lane, Melody Acres, Cave Spring, Roanoke,  
Roanoke County, Virginia, United States, 24018**

#		Max Dimensions	sqft	Included
12	Bath	9'11" x 4'4"	43 sq. ft	Yes
13	Primary Bedroom	14'11" x 11'9"	164 sq. ft	Yes
14	Garage	26'9" x 27'0"	722 sq. ft	No
15	WC	4'11" x 4'8"	23 sq. ft	Yes
16	Family Room	19'4" x 16'0"	310 sq. ft	Yes
17	Utility	6'1" x 14'0"	85 sq. ft	Yes

3643 Larson Lane, Melody Acres, Cave Spring, Roanoke,  
Roanoke County, Virginia, United States, 24018

1 Floor 1 - Bedroom



Max Dimensions: 14'11" x 10'10"  
Calculated Area: 162 sq. ft  
Included: Yes

Heated: Yes  
Finished: Yes  
Enclosed: Yes  
Contiguous: Yes  
Permitted: Yes  
Wet space: No  
Addition: No  
Conversion: No

2 Floor 1 - Bedroom

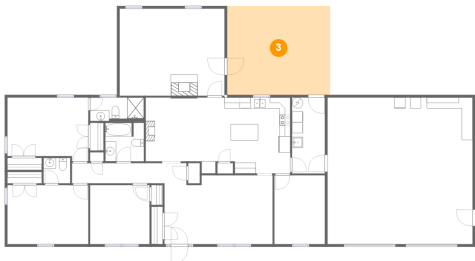


Max Dimensions: 11'0" x 10'10"  
Calculated Area: 119 sq. ft  
Included: Yes

Heated: Yes  
Finished: Yes  
Enclosed: Yes  
Contiguous: Yes  
Permitted: Yes  
Wet space: No  
Addition: No  
Conversion: No

3643 Larson Lane, Melody Acres, Cave Spring, Roanoke,  
Roanoke County, Virginia, United States, 24018

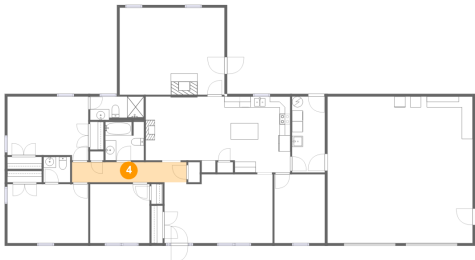
3 Floor 1 - Patio



Max Dimensions: 19'0" x 16'4"  
Calculated Area: 311 sq. ft  
Included: No

Heated: No  
Finished: Yes  
Enclosed: No  
Contiguous: Yes  
Permitted: Yes  
Wet space: No  
Addition: No  
Conversion: No

4 Floor 1 - Hall



Max Dimensions: 21'1" x 3'8"  
Calculated Area: 79 sq. ft  
Included: Yes

Heated: Yes  
Finished: Yes  
Enclosed: Yes  
Contiguous: Yes  
Permitted: Yes  
Wet space: No  
Addition: No  
Conversion: No

5 Floor 1 - Kitchen

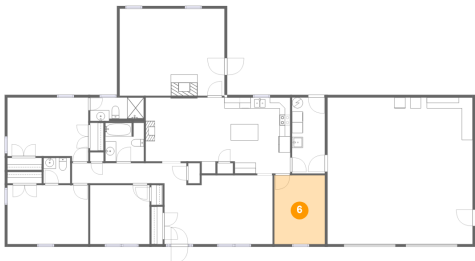


Max Dimensions: 16'4" x 14'0"  
Calculated Area: 221 sq. ft  
Included: Yes

Heated: Yes  
Finished: Yes  
Enclosed: Yes  
Contiguous: Yes  
Permitted: Yes  
Wet space: No  
Addition: No  
Conversion: No

3643 Larson Lane, Melody Acres, Cave Spring, Roanoke,  
Roanoke County, Virginia, United States, 24018

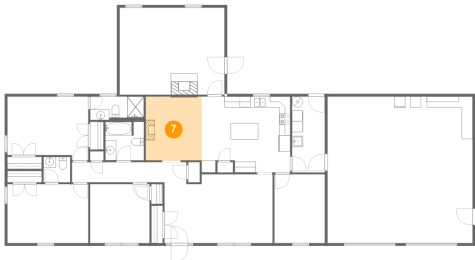
6 Floor 1 - Office



Max Dimensions: 9'4" x 12'8"  
Calculated Area: 118 sq. ft  
Included: Yes

Heated: Yes  
Finished: Yes  
Enclosed: Yes  
Contiguous: Yes  
Permitted: Yes  
Wet space: No  
Addition: No  
Conversion: No

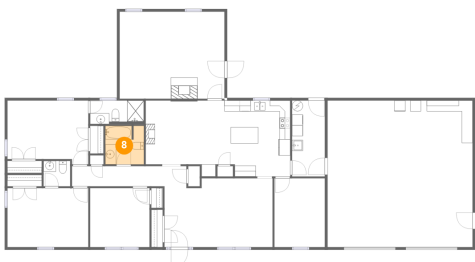
7 Floor 1 - Dining Area



Max Dimensions: 10'4" x 11'9"  
Calculated Area: 121 sq. ft  
Included: Yes

Heated: Yes  
Finished: Yes  
Enclosed: Yes  
Contiguous: Yes  
Permitted: Yes  
Wet space: No  
Addition: No  
Conversion: No

8 Floor 1 - Bath



Max Dimensions: 7'1" x 7'1"  
Calculated Area: 50 sq. ft  
Included: Yes

Heated: Yes  
Finished: Yes  
Enclosed: Yes  
Contiguous: Yes  
Permitted: Yes  
Wet space: Yes  
Addition: No  
Conversion: No

3643 Larson Lane, Melody Acres, Cave Spring, Roanoke,  
Roanoke County, Virginia, United States, 24018

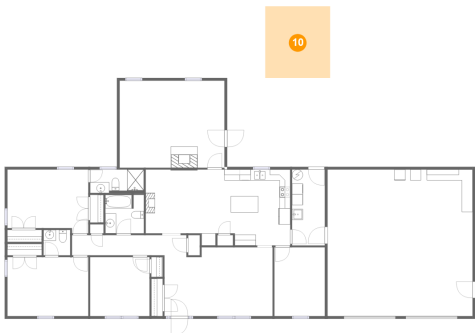
9 Floor 1 - Living Room



Max Dimensions: 19'11" x 12'8"  
Calculated Area: 242 sq. ft  
Included: Yes

Heated: Yes  
Finished: Yes  
Enclosed: Yes  
Contiguous: Yes  
Permitted: Yes  
Wet space: No  
Addition: No  
Conversion: No

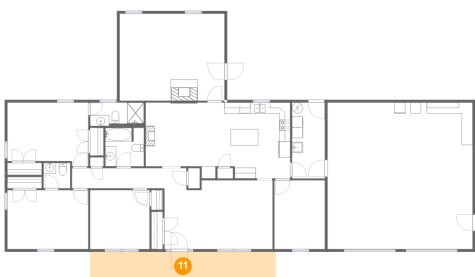
10 Floor 1 - Deck



Max Dimensions: 12'0" x 13'2"  
Calculated Area: 158 sq. ft  
Included: No

Heated: No  
Finished: Yes  
Enclosed: No  
Contiguous: Yes  
Permitted: Yes  
Wet space: No  
Addition: No  
Conversion: No

11 Floor 1 - Porch



Max Dimensions: 34'3" x 5'0"  
Calculated Area: 172 sq. ft  
Included: No

Heated: No  
Finished: Yes  
Enclosed: No  
Contiguous: Yes  
Permitted: Yes  
Wet space: No  
Addition: No  
Conversion: No

## Home report

3643 Larson Lane, Melody Acres, Cave Spring, Roanoke,  
Roanoke County, Virginia, United States, 24018

### 12 Floor 1 - Bath



Max Dimensions: 9'11" x 4'4"  
Calculated Area: 43 sq. ft  
Included: Yes

Heated: Yes  
Finished: Yes  
Enclosed: Yes  
Contiguous: Yes  
Permitted: Yes  
Wet space: Yes  
Addition: No  
Conversion: No

### 13 Floor 1 - Primary Bedroom



Max Dimensions: 14'11" x 11'9"  
Calculated Area: 164 sq. ft  
Included: Yes

Heated: Yes  
Finished: Yes  
Enclosed: Yes  
Contiguous: Yes  
Permitted: Yes  
Wet space: No  
Addition: No  
Conversion: No

### 14 Floor 1 - Garage



Max Dimensions: 26'9" x 27'0"  
Calculated Area: 722 sq. ft  
Included: No

Heated: No  
Finished: No  
Enclosed: Yes  
Contiguous: Yes  
Permitted: Yes  
Wet space: No  
Addition: No  
Conversion: No



3643 Larson Lane, Melody Acres, Cave Spring, Roanoke,  
Roanoke County, Virginia, United States, 24018

15 Floor 1 - WC



Max Dimensions: 4'11" x 4'8"  
Calculated Area: 23 sq. ft  
Included: Yes

Heated: Yes  
Finished: Yes  
Enclosed: Yes  
Contiguous: Yes  
Permitted: Yes  
Wet space: Yes  
Addition: No  
Conversion: No

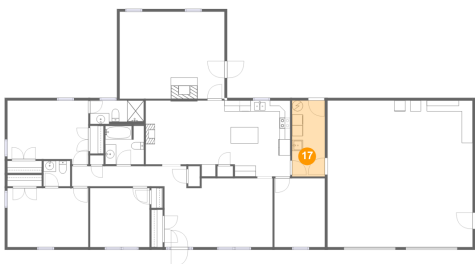
16 Floor 1 - Family Room



Max Dimensions: 19'4" x 16'0"  
Calculated Area: 310 sq. ft  
Included: Yes

Heated: Yes  
Finished: Yes  
Enclosed: Yes  
Contiguous: Yes  
Permitted: Yes  
Wet space: No  
Addition: No  
Conversion: No

17 Floor 1 - Utility



Max Dimensions: 6'1" x 14'0"  
Calculated Area: 85 sq. ft  
Included: Yes

Heated: Yes  
Finished: Yes  
Enclosed: Yes  
Contiguous: Yes  
Permitted: Yes  
Wet space: No  
Addition: No  
Conversion: No