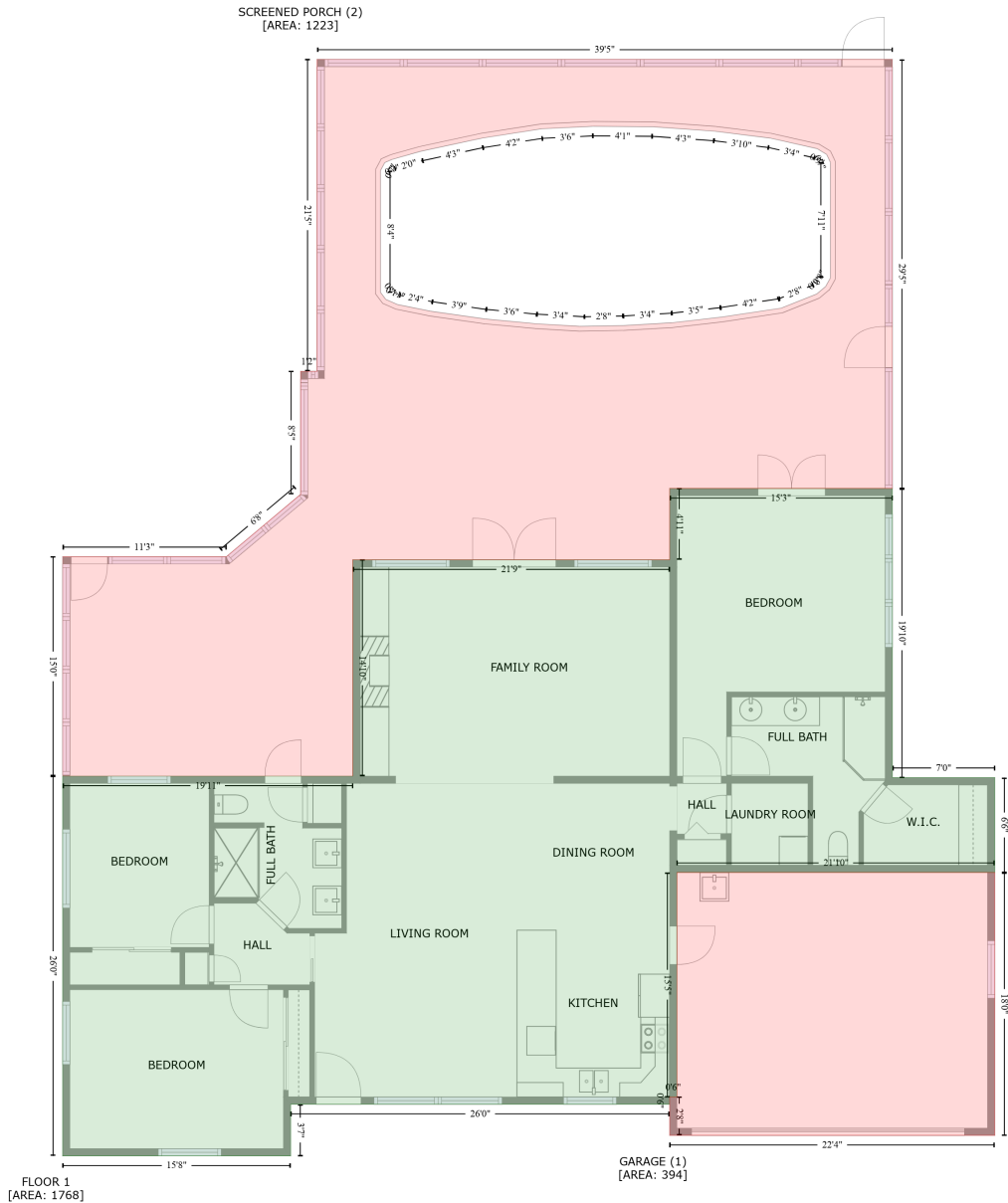


802 Osceola Road, Belleair, Pinellas County, Florida, United States, 33756

Gross Living Area: 1768 sq. ft



Space	Area (sq. ft)	Calculation <small>Coordinate Polygon Area Algorithm using inches</small>
FLOOR 1 (Living area)	1768	$ \begin{aligned} & -((708 + 708) * (410.5 - 648.3) + (708 + 792.2) * (648.3 - 648.3) + (792.2 + 792.2) * (648.3 - \\ & 726.4) + (792.2 + 530.7) * (726.4 - 726.4) + (530.7 + 530.7) * (726.4 - 911) + (530.7 + 524.7) * \\ & (911 - 911) + (524.7 + 524.7) * (911 - 917) + (524.7 + 213) * (917 - 917) + (213 + 213) * (917 - \\ & 959.5) + (213 + 25.4) * (959.5 - 959.5) + (25.4 + 25.4) * (959.5 - 647.1) + (25.4 + 264.1) * (647.1 - \\ & 647.1) + (264.1 + 264.1) * (647.1 - 469.2) + (264.1 + 524.7) * (469.2 - 469.2) + (524.7 + 524.7) * \\ & (469.2 - 410.5) + (524.7 + 708) * (410.5 - 410.5)) * 0.5 * 0.00694 \end{aligned} $

802 Osceola Road, Belleair, Pinellas County, Florida, United States, 33756

Gross Living Area: 1768 sq. ft

Space	Area (sq. ft)	Calculation <small>Coordinate Polygon Area Algorithm using inches</small>
GARAGE (Non-living area)	394	$-\left((792.2 + 792.2) * (726.4 - 942.6) + (792.2 + 524.7) * (942.6 - 942.6) + (524.7 + 524.7) * (942.6 - 911) + (524.7 + 530.7) * (911 - 911) + (530.7 + 530.7) * (911 - 726.4) + (530.7 + 792.2) * (726.4 - 726.4)\right) * 0.5 * 0.00694$
SCREENED PORCH (Non-living area)	1223	$-\left((708 + 708) * (57.6 - 410.5) + (708 + 524.7) * (410.5 - 410.5) + (524.7 + 524.7) * (410.5 - 469.2) + (524.7 + 264.1) * (469.2 - 469.2) + (264.1 + 264.1) * (469.2 - 647.1) + (264.1 + 25.4) * (647.1 - 647.1) + (25.4 + 25.4) * (647.1 - 466.7) + (25.4 + 160) * (466.7 - 466.7) + (160 + 221.2) * (466.7 - 415.4) + (221.2 + 221.2) * (415.4 - 314.2) + (221.2 + 234.7) * (314.2 - 314.2) + (234.7 + 234.7) * (314.2 - 57.6) + (234.7 + 708) * (57.6 - 57.6)\right) * 0.5 * 0.00694 + \left((461.6 + 419.4) * (112.7 - 114.8) + (419.4 + 370) * (114.8 - 122.5) + (370 + 319.9) * (122.5 - 133.3) + (319.9 + 296.6) * (133.3 - 139.9) + (296.6 + 290.4) * (139.9 - 142.5) + (290.4 + 286.9) * (142.5 - 149.1) + (286.9 + 286.9) * (149.1 - 249.2) + (286.9 + 291.2) * (249.2 - 255) + (291.2 + 300.8) * (255 - 259.3) + (300.8 + 328) * (259.3 - 264.7) + (328 + 372.8) * (264.7 - 271.1) + (372.8 + 414.8) * (271.1 - 275.1) + (414.8 + 454.3) * (275.1 - 277.2) + (454.3 + 486.6) * (277.2 - 276.5) + (486.6 + 526.9) * (276.5 - 274.2) + (526.9 + 567.4) * (274.2 - 269.6) + (567.4 + 616.5) * (269.6 - 262.2) + (616.5 + 645.8) * (262.2 - 250.5) + (645.8 + 653) * (250.5 - 244.4) + (653 + 657) * (244.4 - 237.4) + (657 + 657) * (237.4 - 142.4) + (657 + 653.9) * (142.4 - 135.9) + (653.9 + 646.1) * (135.9 - 131.1) + (646.1 + 607.5) * (131.1 - 122.4) + (607.5 + 562.1) * (122.4 - 116.8) + (562.1 + 510.8) * (116.8 - 113.1) + (510.8 + 461.6) * (113.1 - 112.7)\right) * 0.5 * 0.00694$