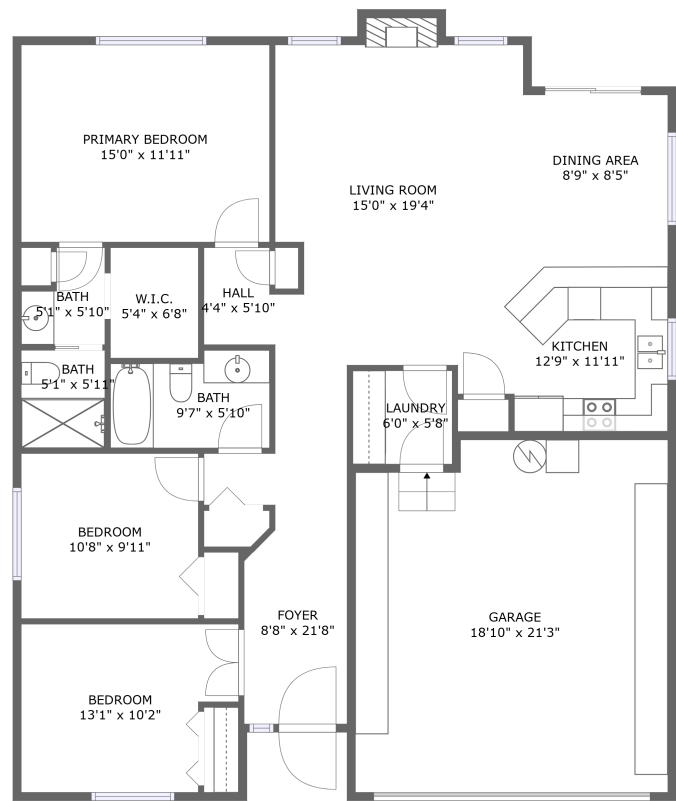


Home report

1334 34th Place, Forest Grove, Washington County, Oregon,
United States, 97116



FLOOR 1


Total Area: 1302 sq. ft


Floor 1: 1302 sq. ft

Excluded: Garage 389 sq. ft, Fireplace 9 sq. ft, Walls: 105 sq. ft

Property summary

 1 Floors

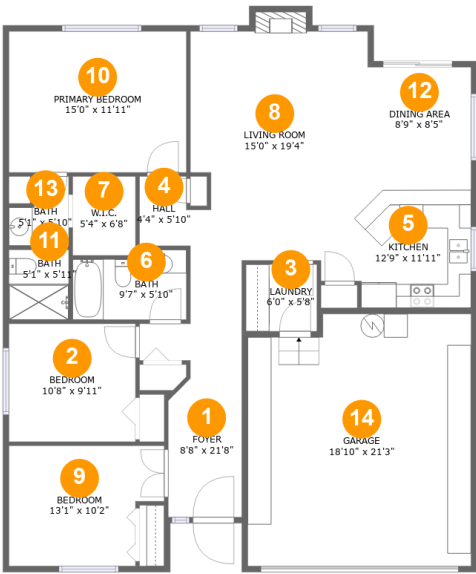
 3 Bedrooms

 2 Bathrooms

 1 Garages

Home report

1334 34th Place, Forest Grove, Washington County, Oregon,
United States, 97116



Room dimensions

Floor 1 Total:1302sqft Excluded: 398sqft

#		Max Dimensions	sqft	Included
1	Foyer	8'8" x 21'8"	128 sq. ft	Yes
2	Bedroom	10'8" x 9'11"	107 sq. ft	Yes
3	Laundry	6'0" x 5'8"	34 sq. ft	Yes
4	Hall	4'4" x 5'10"	24 sq. ft	Yes
5	Kitchen	12'9" x 11'11"	134 sq. ft	Yes
6	Bath	9'7" x 5'10"	52 sq. ft	Yes
7	W.I.C.	5'4" x 6'8"	35 sq. ft	Yes
8	Living Room	15'0" x 19'4"	269 sq. ft	Yes
9	Bedroom	13'1" x 10'2"	120 sq. ft	Yes
10	Primary Bedroom	15'0" x 11'11"	179 sq. ft	Yes
11	Bath	5'1" x 5'11"	30 sq. ft	Yes

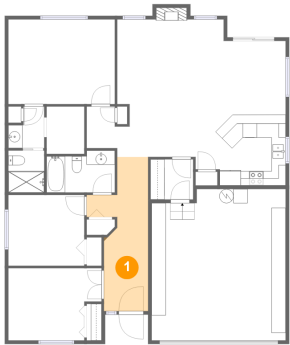
Home report

1334 34th Place, Forest Grove, Washington County, Oregon,
United States, 97116

#		Max Dimensions	sqft	Included
12	Dining Area	8'9" x 8'5"	74 sq. ft	Yes
13	Bath	5'1" x 5'10"	24 sq. ft	Yes
14	Garage	18'10" x 21'3"	389 sq. ft	No

1334 34th Place, Forest Grove, Washington County, Oregon,
United States, 97116

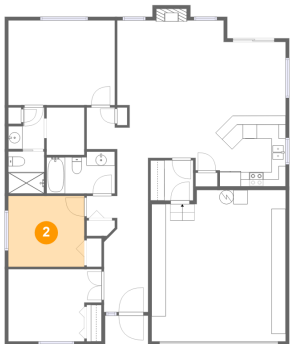
1 Floor 1 - Foyer



Max Dimensions: 8'8" x 21'8"
Calculated Area: 128 sq. ft
Included: Yes

Heated: Yes
Finished: Yes
Enclosed: Yes
Contiguous: Yes
Permitted: Yes
Wet space: No
Addition: No
Conversion: No

2 Floor 1 - Bedroom

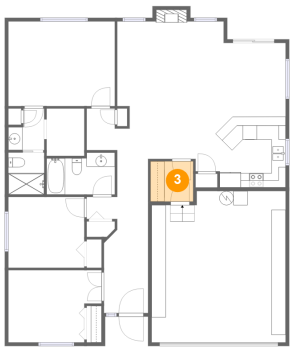


Max Dimensions: 10'8" x 9'11"
Calculated Area: 107 sq. ft
Included: Yes

Heated: Yes
Finished: Yes
Enclosed: Yes
Contiguous: Yes
Permitted: Yes
Wet space: No
Addition: No
Conversion: No

1334 34th Place, Forest Grove, Washington County, Oregon,
United States, 97116

3 Floor 1 - Laundry



Max Dimensions: 6'0" x 5'8"
Calculated Area: 34 sq. ft
Included: Yes

Heated: Yes
Finished: Yes
Enclosed: Yes
Contiguous: Yes
Permitted: Yes
Wet space: No
Addition: No
Conversion: No

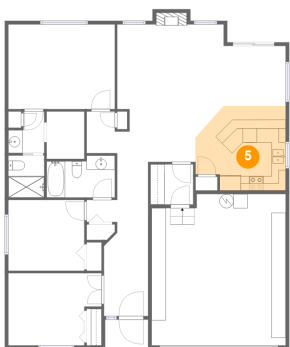
4 Floor 1 - Hall



Max Dimensions: 4'4" x 5'10"
Calculated Area: 24 sq. ft
Included: Yes

Heated: Yes
Finished: Yes
Enclosed: Yes
Contiguous: Yes
Permitted: Yes
Wet space: No
Addition: No
Conversion: No

5 Floor 1 - Kitchen



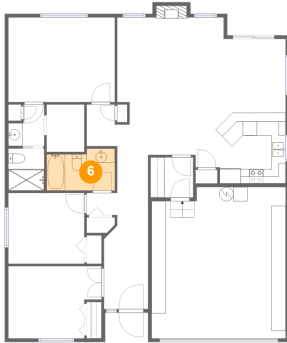
Max Dimensions: 12'9" x 11'11"
Calculated Area: 134 sq. ft
Included: Yes

Heated: Yes
Finished: Yes
Enclosed: Yes
Contiguous: Yes
Permitted: Yes
Wet space: No
Addition: No
Conversion: No

Home report

1334 34th Place, Forest Grove, Washington County, Oregon,
United States, 97116

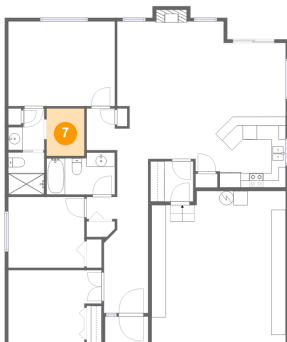
6 Floor 1 - Bath



Max Dimensions: 9'7" x 5'10"
Calculated Area: 52 sq. ft
Included: Yes

Heated: Yes
Finished: Yes
Enclosed: Yes
Contiguous: Yes
Permitted: Yes
Wet space: Yes
Addition: No
Conversion: No

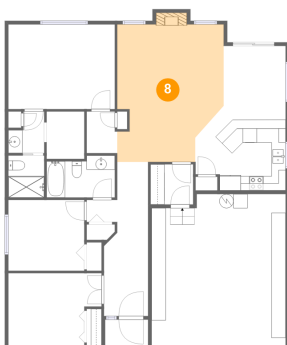
7 Floor 1 - W.I.C.



Max Dimensions: 5'4" x 6'8"
Calculated Area: 35 sq. ft
Included: Yes

Heated: Yes
Finished: Yes
Enclosed: Yes
Contiguous: Yes
Permitted: Yes
Wet space: No
Addition: No
Conversion: No

8 Floor 1 - Living Room



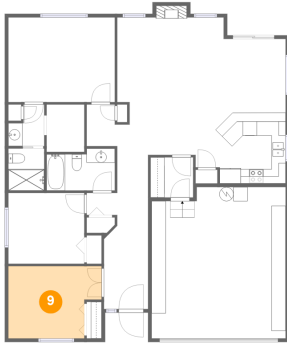
Max Dimensions: 15'0" x 19'4"
Calculated Area: 269 sq. ft
Included: Yes

Heated: Yes
Finished: Yes
Enclosed: Yes
Contiguous: Yes
Permitted: Yes
Wet space: No
Addition: No
Conversion: No

Home report

1334 34th Place, Forest Grove, Washington County, Oregon,
United States, 97116

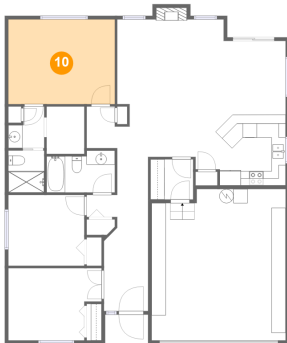
9 Floor 1 - Bedroom



Max Dimensions: 13'1" x 10'2"
Calculated Area: 120 sq. ft
Included: Yes

Heated: Yes
Finished: Yes
Enclosed: Yes
Contiguous: Yes
Permitted: Yes
Wet space: No
Addition: No
Conversion: No

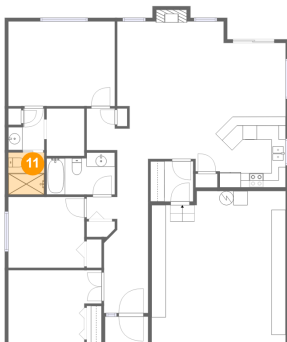
10 Floor 1 - Primary Bedroom



Max Dimensions: 15'0" x 11'11"
Calculated Area: 179 sq. ft
Included: Yes

Heated: Yes
Finished: Yes
Enclosed: Yes
Contiguous: Yes
Permitted: Yes
Wet space: No
Addition: No
Conversion: No

11 Floor 1 - Bath

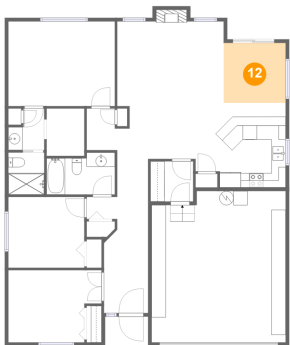


Max Dimensions: 5'1" x 5'11"
Calculated Area: 30 sq. ft
Included: Yes

Heated: Yes
Finished: Yes
Enclosed: Yes
Contiguous: Yes
Permitted: Yes
Wet space: Yes
Addition: No
Conversion: No

1334 34th Place, Forest Grove, Washington County, Oregon,
United States, 97116

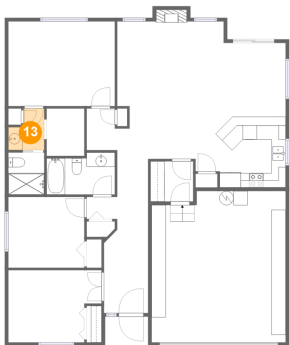
12 Floor 1 - Dining Area



Max Dimensions: 8'9" x 8'5"
Calculated Area: 74 sq. ft
Included: Yes

Heated: Yes
Finished: Yes
Enclosed: Yes
Contiguous: Yes
Permitted: Yes
Wet space: No
Addition: No
Conversion: No

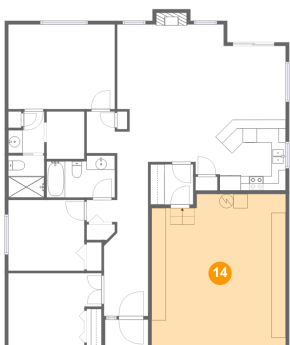
13 Floor 1 - Bath



Max Dimensions: 5'1" x 5'10"
Calculated Area: 24 sq. ft
Included: Yes

Heated: Yes
Finished: Yes
Enclosed: Yes
Contiguous: Yes
Permitted: Yes
Wet space: Yes
Addition: No
Conversion: No

14 Floor 1 - Garage



Max Dimensions: 18'10" x 21'3"
Calculated Area: 389 sq. ft
Included: No

Heated: No
Finished: No
Enclosed: Yes
Contiguous: Yes
Permitted: Yes
Wet space: No
Addition: No
Conversion: No