

5371 Maple Road

Richmond BC V7E 1G2

Main Level Area: 1,746 SQ.FT.

Upper Level Area: 1,571 SQ.FT.

Total Area 3,317 SQ.FT.

Garage Area: 420 SQ.FT.

5



BEDROOMS

4

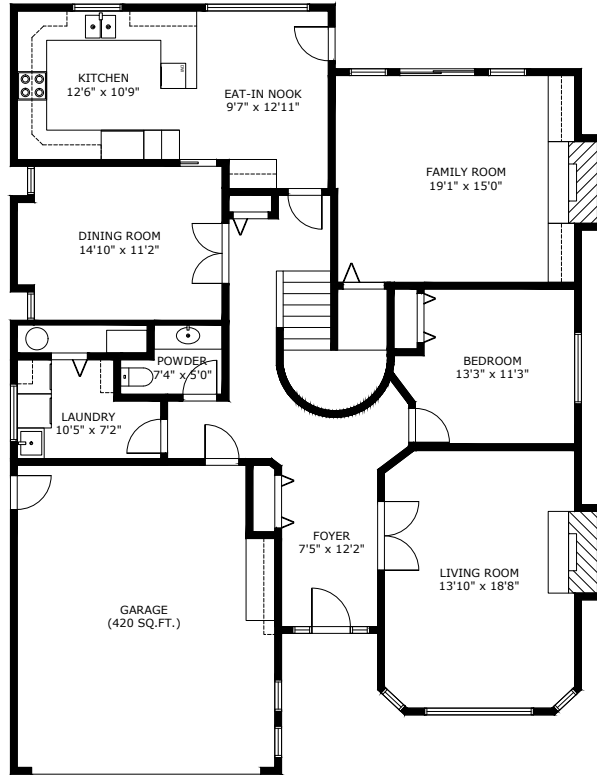


BATHROOMS

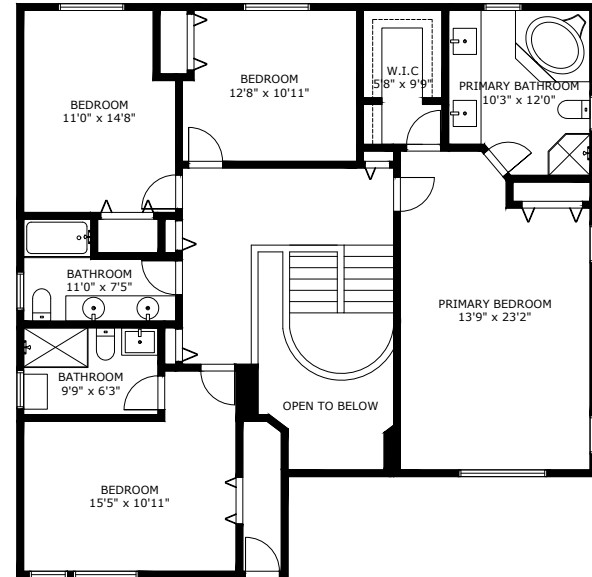
3,317



TOTAL SQ.FT.



Main Level Area:



Upper Level Area:

5371 Maple Road Richmond BC V7E 1G2

Measurements are approximate and may not be to scale. Gross measurements provided by agent.
The floor plan illustration is not suitable for construction/architectural purposes.
This communication is not intended to cause or induce breach of an existing agency agreement

3D IMMERSIVE
Tours Photos Floor Plans

Professionally measured by 3D Immersive Marketing Ltd.

Lead Floor Planner: *Sara Alexander*
Quality Assurance: *Diana Gubina*