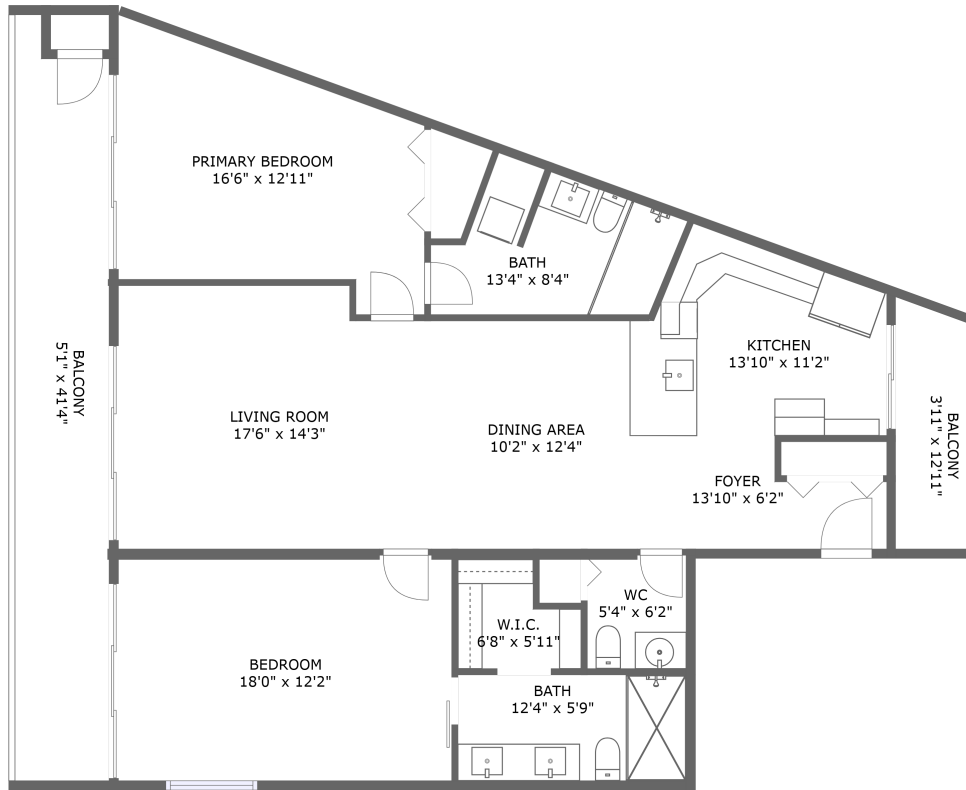



7540 Sunshine Skyway Lane South, Greater Pinellas Point, St. Petersburg, Pinellas County, Florida, United



FLOOR 1

Property summary

 **0** Garages

 **2** Bedrooms

 **2** Bathrooms

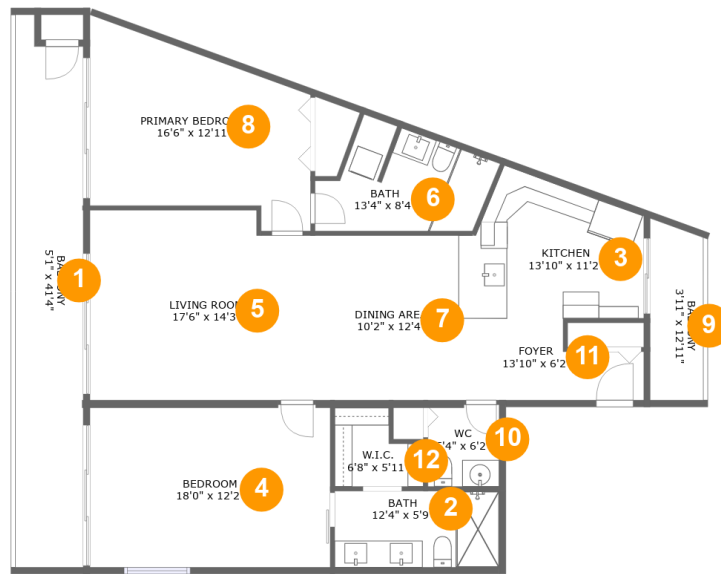
 **1** Half baths

 **1** Floors

 **1,227** Gross living area sqft

 **1,616** Total sqft

7540 Sunshine Skyway Lane South, Greater Pinellas Point, St. Petersburg, Pinellas County, Florida, United



Room dimensions

Floor 1

Total sqft: 1616 Living area: 1227

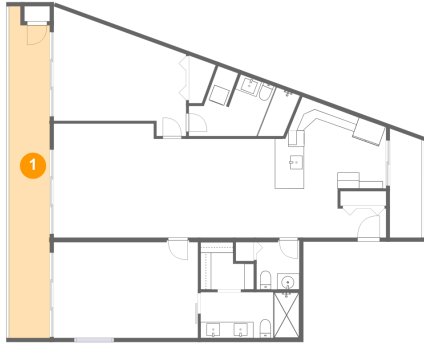
#		Dimensions	sqft	Counted as living area
1	Balcony	5'1" x 41'4"	202 sq. ft	No
2	Bath	12'4" x 5'9"	71 sq. ft	Yes
3	Kitchen	13'10" x 11'2"	127 sq. ft	Yes
4	Bedroom	18'0" x 12'2"	216 sq. ft	Yes
5	Living Room	17'6" x 14'3"	239 sq. ft	Yes
6	Bath	13'4" x 8'4"	82 sq. ft	Yes
7	Dining Area	10'2" x 12'4"	125 sq. ft	No
8	Primary Bedroom	16'6" x 12'11"	194 sq. ft	Yes
9	Balcony	3'11" x 12'11"	51 sq. ft	No
10	WC	5'4" x 6'2"	32 sq. ft	Yes
11	Foyer	13'10" x 6'2"	70 sq. ft	Yes

7540 Sunshine Skyway Lane South, Greater Pinellas Point, St. Petersburg, Pinellas County, Florida, United

#		Dimensions	sqft	Counted as living area
12	W.I.C.	6'8" x 5'11"	32 sq. ft	Yes

7540 Sunshine Skyway Lane South, Greater Pinellas Point, St. Petersburg, Pinellas County, Florida, United

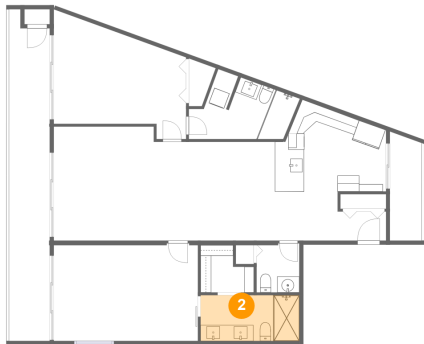
1 Floor 1 - Balcony



Dimensions: 5'1" x 41'4"
Area: 202 sq. ft
Counted as living area: No

Heated: No
Finished: Yes
Enclosed: No
Contiguous: Yes
Permitted: Yes
Wet space: No
Addition: No
Conversion: No

2 Floor 1 - Bath

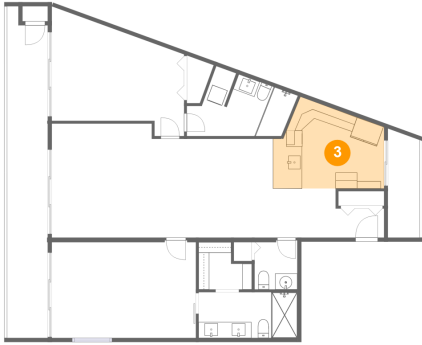


Dimensions: 12'4" x 5'9"
Area: 71 sq. ft
Counted as living area: Yes

Heated: Yes
Finished: Yes
Enclosed: Yes
Contiguous: Yes
Permitted: Yes
Wet space: Yes
Addition: No
Conversion: No

7540 Sunshine Skyway Lane South, Greater Pinellas Point, St. Petersburg, Pinellas County, Florida, United

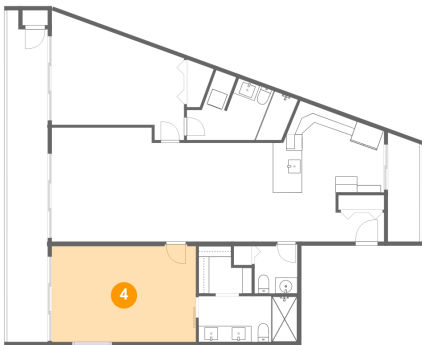
3 Floor 1 - Kitchen



Dimensions: 13'10" x 11'2"
Area: 127 sq. ft
Counted as living area: Yes

Heated: Yes
Finished: Yes
Enclosed: Yes
Contiguous: Yes
Permitted: Yes
Wet space: No
Addition: No
Conversion: No

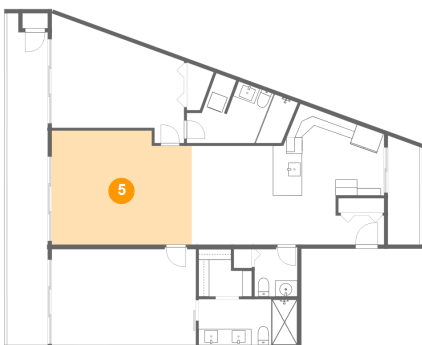
4 Floor 1 - Bedroom



Dimensions: 18'0" x 12'2"
Area: 216 sq. ft
Counted as living area: Yes

Heated: Yes
Finished: Yes
Enclosed: Yes
Contiguous: Yes
Permitted: Yes
Wet space: No
Addition: No
Conversion: No

5 Floor 1 - Living Room

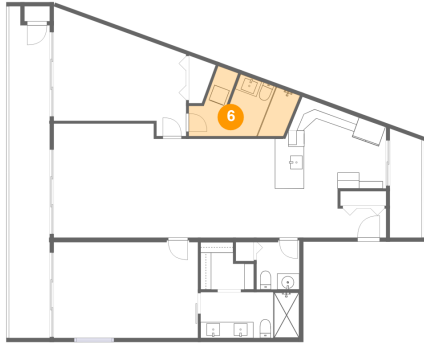


Dimensions: 17'6" x 14'3"
Area: 239 sq. ft
Counted as living area: Yes

Heated: Yes
Finished: Yes
Enclosed: Yes
Contiguous: Yes
Permitted: Yes
Wet space: No
Addition: No
Conversion: No

7540 Sunshine Skyway Lane South, Greater Pinellas Point, St. Petersburg, Pinellas County, Florida, United

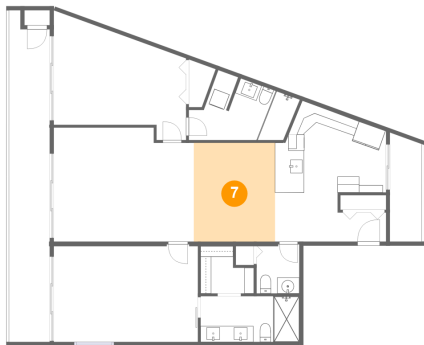
6 Floor 1 - Bath



Dimensions: 13'4" x 8'4"
Area: 82 sq. ft
Counted as living area: Yes

Heated: Yes
Finished: Yes
Enclosed: Yes
Contiguous: Yes
Permitted: Yes
Wet space: Yes
Addition: No
Conversion: No

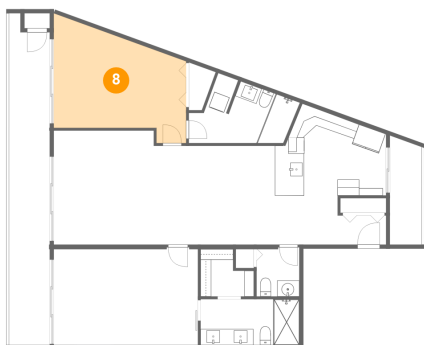
7 Floor 1 - Dining Area



Dimensions: 10'2" x 12'4"
Area: 125 sq. ft
Counted as living area: No

Heated: Yes
Finished: Yes
Enclosed: Yes
Contiguous: Yes
Permitted: Yes
Wet space: No
Addition: No
Conversion: No

8 Floor 1 - Primary Bedroom

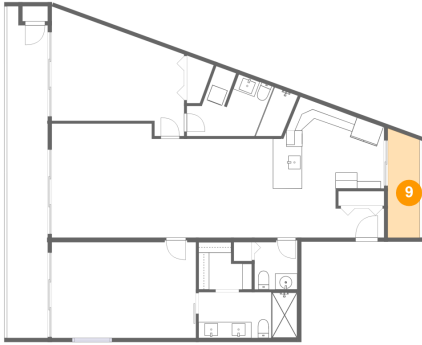


Dimensions: 16'6" x 12'11"
Area: 194 sq. ft
Counted as living area: Yes

Heated: Yes
Finished: Yes
Enclosed: Yes
Contiguous: Yes
Permitted: Yes
Wet space: No
Addition: No
Conversion: No

7540 Sunshine Skyway Lane South, Greater Pinellas Point, St. Petersburg, Pinellas County, Florida, United

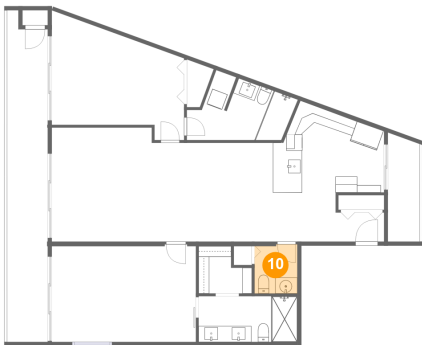
9 Floor 1 - Balcony



Dimensions: 3'11" x 12'11"
Area: 51 sq. ft
Counted as living area: No

Heated: No
Finished: Yes
Enclosed: No
Contiguous: Yes
Permitted: Yes
Wet space: No
Addition: No
Conversion: No

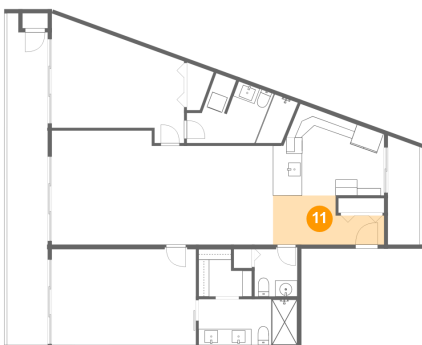
10 Floor 1 - WC



Dimensions: 5'4" x 6'2"
Area: 32 sq. ft
Counted as living area: Yes

Heated: Yes
Finished: Yes
Enclosed: Yes
Contiguous: Yes
Permitted: Yes
Wet space: Yes
Addition: No
Conversion: No

11 Floor 1 - Foyer

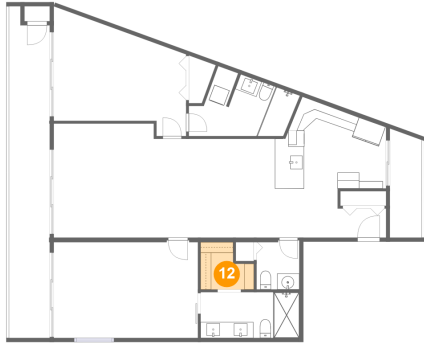


Dimensions: 13'10" x 6'2"
Area: 70 sq. ft
Counted as living area: Yes

Heated: Yes
Finished: Yes
Enclosed: Yes
Contiguous: Yes
Permitted: Yes
Wet space: No
Addition: No
Conversion: No

7540 Sunshine Skyway Lane South, Greater Pinellas Point, St. Petersburg, Pinellas County, Florida, United

12 Floor 1 - W.I.C.



Dimensions: 6'8" x 5'11"
Area: 32 sq. ft
Counted as living area: Yes

Heated: Yes
Finished: Yes
Enclosed: Yes
Contiguous: Yes
Permitted: Yes
Wet space: No
Addition: No
Conversion: No