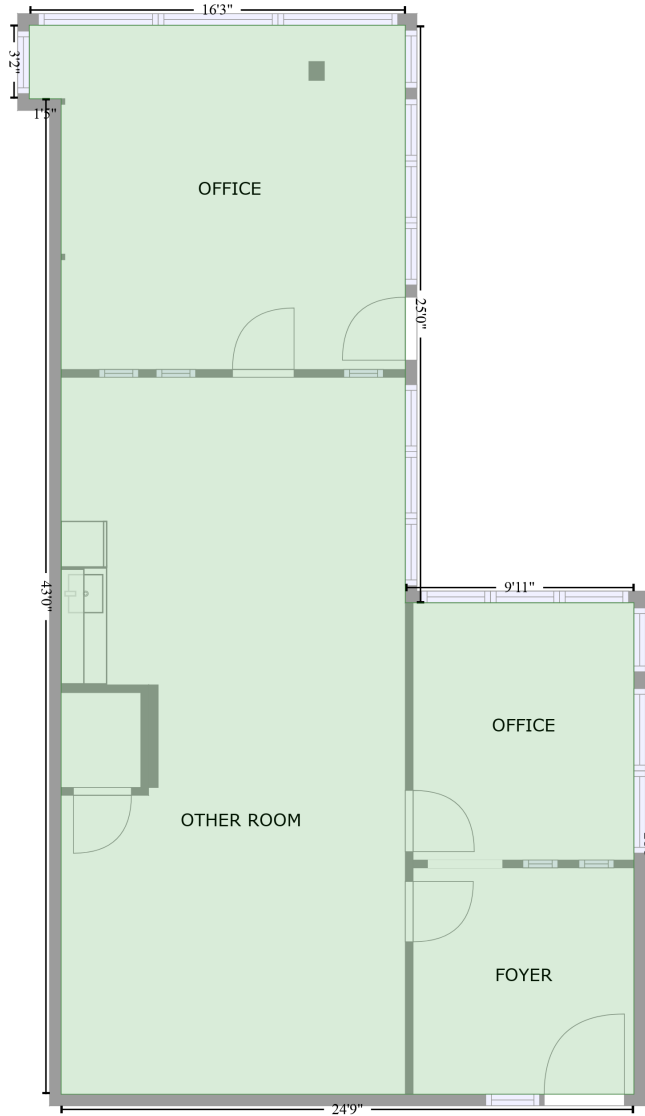


2535 Kettner Boulevard, Midtown, San Diego, San Diego County, California, United States, 92101, 3A1

Gross Living Area: 903 sq. ft

FLOOR 1
[AREA: 903]



Space	Area (sq. ft)	Calculation <small>Coordinate Polygon Area Algorithm using inches</small>
FLOOR 1 (Living area)	903	$-\left((254.1 + 254.1) * (79.5 - 379.1) + (254.1 + 372.8) * (379.1 - 379.1) + (372.8 + 372.8) * (379.1 - 634.1) + (372.8 + 75.4) * (634.1 - 634.1) + (75.4 + 75.4) * (634.1 - 117.7) + (75.4 + 58.9) * (117.7 - 117.7) + (58.9 + 58.9) * (117.7 - 79.5) + (58.9 + 254.1) * (79.5 - 79.5)\right) * 0.5 * 0.00694$