



1120 Pratt Ave NE,Huntsville,AL,US




Property summary




0
Garages



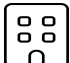
3
Bedrooms




2
Bathrooms




0
Half baths



2
Floors



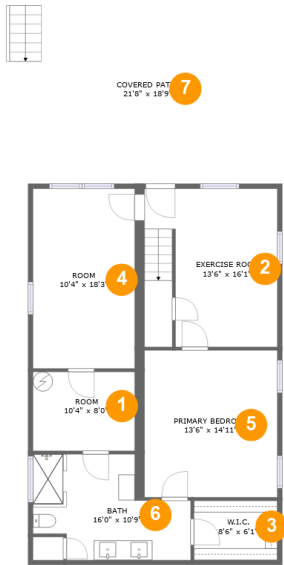
2,445
Gross living
area sqft



2,862
Total sqft

Home report

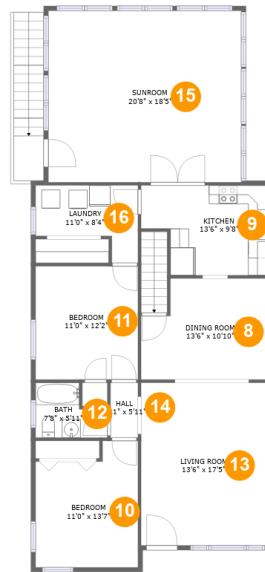
1120 Pratt Ave NE,Huntsville,AL,US



Room dimensions

Floor 1 Total sqft: 1405 Living area: 988

#		Dimensions	sqft	Counted as living area
1	Room	10'4" x 8'0"	83 sq. ft	Yes
2	Exercise Room	13'6" x 16'1"	212 sq. ft	Yes
3	W.I.C.	8'6" x 6'1"	51 sq. ft	Yes
4	Room	10'4" x 18'3"	188 sq. ft	Yes
5	Primary Bedroom	13'6" x 14'11"	201 sq. ft	Yes
6	Bath	16'0" x 10'9"	136 sq. ft	Yes
7	Covered Patio	21'8" x 18'9"	407 sq. ft	No

1120 Pratt Ave NE, Huntsville, AL, US

Room dimensions

Floor 2

Total sqft: 1457 Living area: 1457

#		Dimensions	sqft	Counted as living area
8	Dining Room	13'6" x 10'10"	134 sq. ft	Yes
9	Kitchen	13'6" x 9'8"	114 sq. ft	Yes
10	Bedroom	11'0" x 13'7"	133 sq. ft	Yes
11	Bedroom	11'0" x 12'2"	134 sq. ft	Yes
12	Bath	7'8" x 5'11"	37 sq. ft	Yes
13	Living Room	13'6" x 17'5"	235 sq. ft	Yes
14	Hall	2'11" x 5'11"	17 sq. ft	Yes
15	Sunroom	20'8" x 18'5"	381 sq. ft	Yes
16	Laundry	11'0" x 8'4"	68 sq. ft	Yes

1120 Pratt Ave NE,Huntsville,AL,US

1 Floor 1 - Room



Dimensions: 10'4" x 8'0"
Area: 83 sq. ft
Counted as living area: Yes

Heated: Yes
Finished: Yes
Enclosed: Yes
Contiguous: Yes
Permitted: Yes
Wet space: No
Addition: No
Conversion: No

2 Floor 1 - Exercise Room



Dimensions: 13'6" x 16'1"
Area: 212 sq. ft
Counted as living area: Yes

Heated: Yes
Finished: Yes
Enclosed: Yes
Contiguous: Yes
Permitted: Yes
Wet space: No
Addition: No
Conversion: No

1120 Pratt Ave NE,Huntsville,AL,US

3 Floor 1 - W.I.C.



Dimensions: 8'6" x 6'1"
Area: 51 sq. ft
Counted as living area: Yes

Heated: Yes
Finished: Yes
Enclosed: Yes
Contiguous: Yes
Permitted: Yes
Wet space: No
Addition: No
Conversion: No

4 Floor 1 - Room



Dimensions: 10'4" x 18'3"
Area: 188 sq. ft
Counted as living area: Yes

Heated: Yes
Finished: Yes
Enclosed: Yes
Contiguous: Yes
Permitted: Yes
Wet space: No
Addition: No
Conversion: No

5 Floor 1 - Primary Bedroom



Dimensions: 13'6" x 14'11"
Area: 201 sq. ft
Counted as living area: Yes

Heated: Yes
Finished: Yes
Enclosed: Yes
Contiguous: Yes
Permitted: Yes
Wet space: No
Addition: No
Conversion: No

1120 Pratt Ave NE, Huntsville, AL, US**6 Floor 1 - Bath**

Dimensions: 16'0" x 10'9"
Area: 136 sq. ft
Counted as living area: Yes

Heated: Yes
Finished: Yes
Enclosed: Yes
Contiguous: Yes
Permitted: Yes
Wet space: Yes
Addition: No
Conversion: No

7 Floor 1 - Covered Patio

Dimensions: 21'8" x 18'9"
Area: 407 sq. ft
Counted as living area: No

Heated: No
Finished: Yes
Enclosed: No
Contiguous: Yes
Permitted: Yes
Wet space: No
Addition: No
Conversion: No

8 Floor 2 - Dining Room

Dimensions: 13'6" x 10'10"
Area: 134 sq. ft
Counted as living area: Yes

Heated: Yes
Finished: Yes
Enclosed: Yes
Contiguous: Yes
Permitted: Yes
Wet space: No
Addition: No
Conversion: No

1120 Pratt Ave NE,Huntsville,AL,US**9 Floor 2 - Kitchen**

Dimensions: 13'6" x 9'8"
Area: 114 sq. ft
Counted as living area: Yes

Heated: Yes
Finished: Yes
Enclosed: Yes
Contiguous: Yes
Permitted: Yes
Wet space: No
Addition: No
Conversion: No

10 Floor 2 - Bedroom

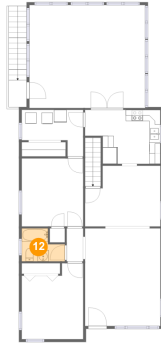
Dimensions: 11'0" x 13'7"
Area: 133 sq. ft
Counted as living area: Yes

Heated: Yes
Finished: Yes
Enclosed: Yes
Contiguous: Yes
Permitted: Yes
Wet space: No
Addition: No
Conversion: No

11 Floor 2 - Bedroom

Dimensions: 11'0" x 12'2"
Area: 134 sq. ft
Counted as living area: Yes

Heated: Yes
Finished: Yes
Enclosed: Yes
Contiguous: Yes
Permitted: Yes
Wet space: No
Addition: No
Conversion: No

1120 Pratt Ave NE, Huntsville, AL, US**12 Floor 2 - Bath**

Dimensions: 7'8" x 5'11"
Area: 37 sq. ft
Counted as living area: Yes

Heated: Yes
Finished: Yes
Enclosed: Yes
Contiguous: Yes
Permitted: Yes
Wet space: Yes
Addition: No
Conversion: No

13 Floor 2 - Living Room

Dimensions: 13'6" x 17'5"
Area: 235 sq. ft
Counted as living area: Yes

Heated: Yes
Finished: Yes
Enclosed: Yes
Contiguous: Yes
Permitted: Yes
Wet space: No
Addition: No
Conversion: No

14 Floor 2 - Hall

Dimensions: 2'11" x 5'11"
Area: 17 sq. ft
Counted as living area: Yes

Heated: Yes
Finished: Yes
Enclosed: Yes
Contiguous: Yes
Permitted: Yes
Wet space: No
Addition: No
Conversion: No

15 Floor 2 - Sunroom



Dimensions: 20'8" x 18'5"
Area: 381 sq. ft
Counted as living area: Yes

Heated: Yes
Finished: Yes
Enclosed: Yes
Contiguous: Yes
Permitted: Yes
Wet space: No
Addition: No
Conversion: No

16 Floor 2 - Laundry



Dimensions: 11'0" x 8'4"
Area: 68 sq. ft
Counted as living area: Yes

Heated: Yes
Finished: Yes
Enclosed: Yes
Contiguous: Yes
Permitted: Yes
Wet space: No
Addition: No
Conversion: No